

Deprivation Analysis

Carlisle

Aim

To identify the two most deprived areas within Carlisle in order to inform the targeting of support for the most vulnerable communities within the district.

Conclusions & Recommendations

Based on the evidence presented within this report, the most deprived areas of Carlisle are Upperby ward and either Botcherby ward or Belle Vue ward.

Overall Deprivation Score

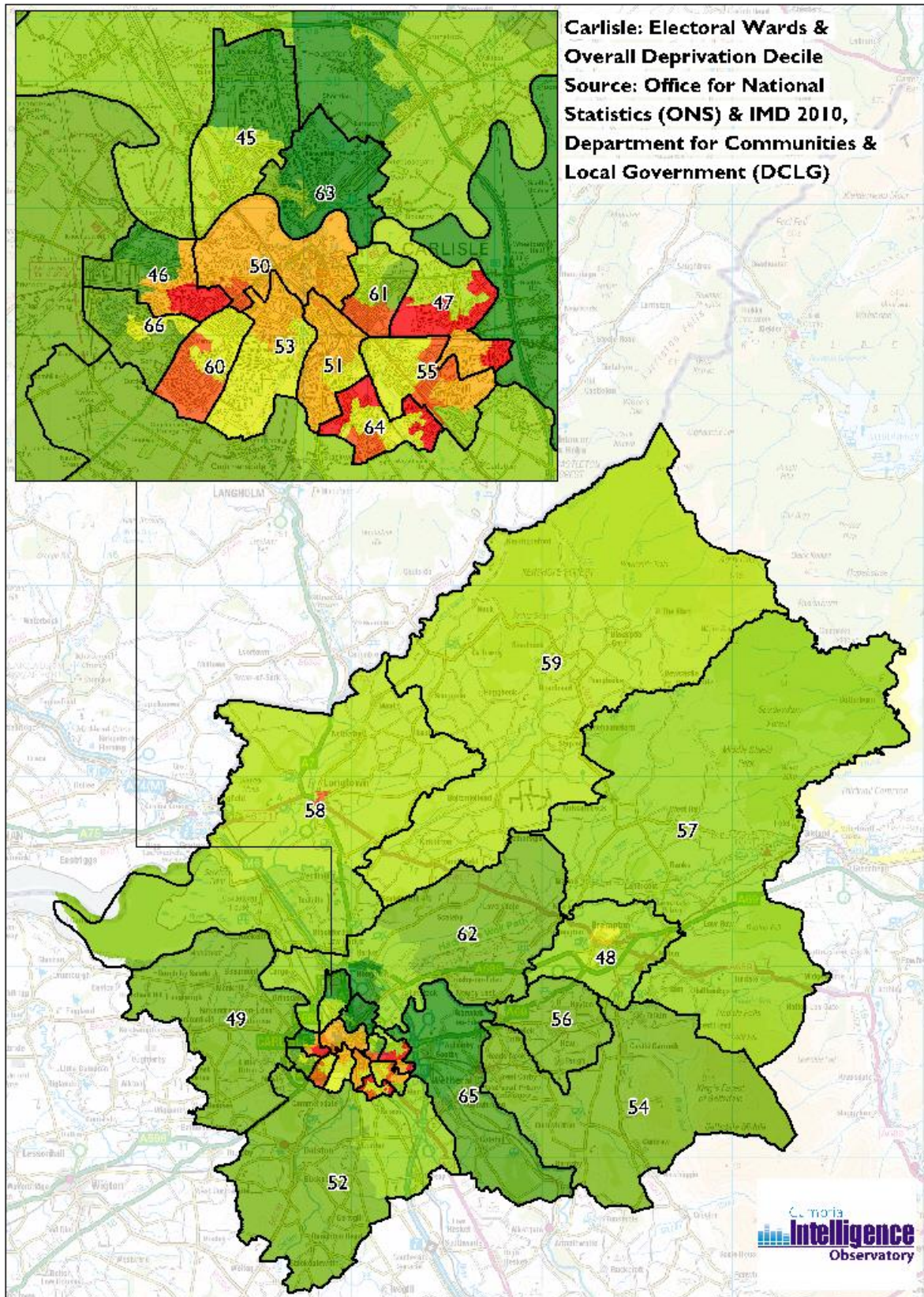
The Indices of Multiple Deprivation (IMD): The IMD were produced by the DCLG to consider the unmet needs of small areas, known as Lower Super Output Areas (LSOAs), caused by a lack of resources of across seven domains:

- Income;
- Employment;
- Health and Disability;
- Education Skills and Training;
- Barriers to Housing and Services;
- Living Environment; and
- Crime.

Carlisle has five communities that rank within the 10% most deprived of areas in England; one of these communities is located in **Belle Vue** ward, two of these communities are located in **Botcherby** ward and two of these communities are located in **Upperby** ward.

Figure 1 plots each LSOA in the district shaded according to their overall deprivation scores; areas shaded in red represent communities that are in the 10% most deprived of areas in England, while areas shaded in dark green represent communities that are in the 10% least deprived of areas in England. Ward boundaries are overlaid onto the LSOA data.

Figure 1:



(c) Crown Copyright and Database Right, 2014 Ordnance Survey Licence Number 100019596

Figure 1 Legend:

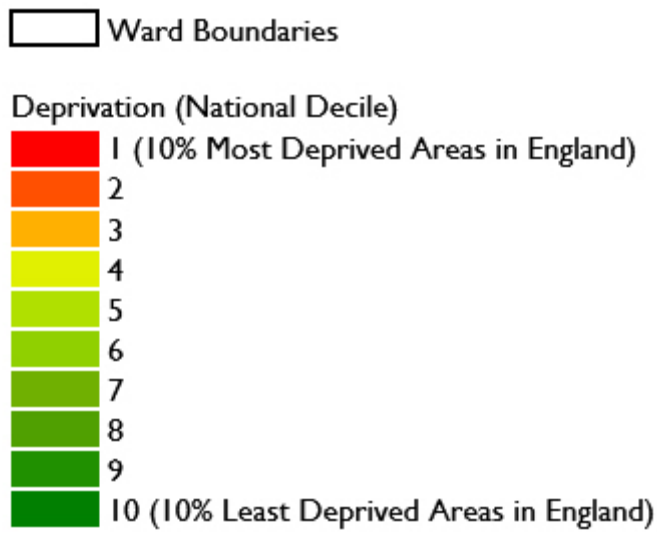


Figure 1: Ward Name and Map ID:

Ward Name	Map ID	Ward Name	Map ID
Belah	45	Hayton	56
Belle Vue	46	Irthing	57
Botcherby	47	Longtown & Rockcliffe	58
Brampton	48	Lyne	59
Burgh	49	Morton	60
Castle	50	St Aidans	61
Currock	51	Stanwix Rural	62
Dalston	52	Stanwix Urban	63
Denton Holme	53	Upperby	64
Great Corby and Geltsdale	54	Wetheral	65
Harraby	55	Yewdale	66

Alternative Measures of Deprivation

ACORN Socio-Economic Profiling: ACORN is a socio-economic profiling tool which has been developed by the company CACI and is subscribed to by the Cumbria Intelligence Observatory. ACORN uses information gathered from a number of administrative sources to classify each postcode in Great Britain (GB) as belonging to one of five socio-economic categories. In Carlisle the wards with the greatest proportions of residents living in postcodes that have been classified as belonging to the most deprived ACORN socio-economic category (ACORN Category 5, aka Urban Adversity) are **Castle** and **St Aidans**.

Paycheck Annual Household Income: The Paycheck dataset is a modelled index of annual household income which has been developed by the company CACI and is subscribed to by the Cumbria Intelligence Observatory. In Carlisle the wards with the greatest proportions of households with annual incomes of less than £10k are **Upperby** and **Morton**.

Child Poverty: The Children in Low-Income Families Local Measure shows the proportion of children living in families in receipt of out-of-work (means-tested) benefits or in receipt of tax credits where their reported income is less than 60 per cent of UK median income. This measure provides a broad proxy for relative low-income child poverty as set out in the Child Poverty Act 2010. There are pockets of severe child poverty across the district's wards, with the greatest proportions of children living in poverty found in **Upperby** and **Botcherby**.

Unemployment: The Job Seekers Allowance (JSA) Claimant Rate expresses the number of JSA claimants resident in an area as a percentage of the population aged 16-64 resident in that area. Of Carlisle's wards the greatest JSA claimant rates are found in **Upperby** and **Castle**.

Life Expectancy: Of Carlisle's wards, the lowest life expectancies for males are found in **Castle** and **Upperby**, while the lowest life expectancies for females are found in **Botcherby** and **Belle Vue**.

Day to Day Activities Limited: The 2011 Census asked the question: "Are your day-to-day activities limited because of a health problem or disability which has lasted, or is expected to last, at least 12 months"? Across the district, the wards with the greatest proportions of residents reporting that their day-to-day activities were limited were **Morton** and **Upperby**.

General Health: The 2011 Census also asked the question: "How is your health in general"? Of Carlisle's wards, the greatest proportions of residents reporting that their health was 'bad' or 'very bad' were found in **Upperby** and **Morton**.

Figure 2 presents the above alternative measures of deprivation in relation to each ward within Carlisle. The two wards considered to be the most deprived in the district for each measure are highlighted in red.

Figure 2: Alternative Measures of Deprivation: Carlisle:

	% Persons - Category 5 - Urban Adversity	% Households - 0-10k	% of All Children in Poverty	Job Seekers Allowance (JSA) - Claimant Rate	Life expectancy at birth for males (years)	Life expectancy at birth for females (years)	% Persons - Day-to-day activities limited	% Persons - Bad or very bad health
Names	2014	2014	2012	December 2014	2008-2012	2008-2012	2011	2011
National	17.8	12.4	18.6	1.9	78.9	82.8	17.9	5.6
County - Cumbria	12.5	14.3	14.1	1.6	78.6	82.2	20.3	6.0
District - Carlisle	17.4	14.1	15.3	1.3	78.0	81.8	19.2	6.0
Wards:								
Belah	2.9	12.5	11.8	0.9	84.2	85.3	17.8	4.6
Belle Vue	13.7	15.2	22.4	1.8	75.6	78.5	18.2	6.8
Botcherby	25.3	19.0	28.4	1.8	76.8	78.1	21.4	7.4
Brampton	5.5	15.3	14.3	1.5	76.9	81.2	20.3	5.6
Burgh	0.0	8.6	5.4	0.8	81.1	86.7	16.5	4.2
Castle	63.6	16.3	23.3	2.3	72.5	79.0	18.6	6.9
Currock	44.5	17.3	18.5	1.8	75.5	81.4	16.7	6.2
Dalston	0.0	9.8	4.7	0.5	80.5	82.4	17.6	4.4
Denton Holme	43.7	15.1	20.6	1.6	75.8	81.4	18.1	6.4
Great Corby and Geltsdale	0.0	7.9	2.6	0.0	82.8	91.0	16.0	4.0
Harraby	15.5	14.1	15.7	1.1	77.4	81.9	20.1	6.9
Hayton	0.0	9.0	8.3	0.8	80.8	84.1	17.4	4.3
Irthing	0.0	7.5	6.3	0.5	80.8	no data	17.6	5.0
Longtown & Rockcliffe	5.5	14.6	11.4	1.1	79.8	80.5	21.4	7.1
Lyne	0.0	8.7	5.1	0.4	no data	no data	21.5	5.9
Morton	9.2	21.4	20.1	2.1	76.1	81.3	26.2	8.5
St Aidans	45.2	16.4	12.4	1.8	74.1	83.8	17.8	5.9
Stanwix Rural	0.0	7.5	5.3	0.5	81.2	82.2	16.5	3.5
Stanwix Urban	0.0	11.7	4.4	0.4	81.4	83.8	17.6	4.3
Upperby	34.3	21.6	33.4	2.6	72.7	79.9	25.2	9.1
Wetheral	0.0	7.4	2.2	0.2	82.7	84.5	15.9	3.9
Yewdale	1.8	12.1	7.0	0.8	78.8	82.1	19.4	5.6

Conclusions & Recommendations

Upperby ward stands out as being amongst the most deprived areas of Carlisle both in relation to the IMD and six of the eight alternative measures of deprivation. Botcherby ward also ranks amongst the most deprived in the district in relation to the IMD and two of the eight alternative measures of deprivation, while Belle Vue ward ranks amongst the most deprived in the district in relation to the IMD and one of the eight alternative measures of deprivation.

Castle ward and Morton ward rank amongst the most deprived in the district in relation to three of the eight alternative measures of deprivation each, while St Aidans ward ranks amongst the most deprived in the district in relation to one of the eight alternative measures of deprivation. However, these wards do not feature amongst the most deprived in relation to the IMD.

Based on the evidence presented within this report, the most deprived areas of Carlisle are Upperby ward and either Botcherby ward or Belle Vue ward.

Further Information

Cumbria Atlas:

<http://www.cumbriaobservatory.org.uk/Atlas/CumbriaAtlas.asp>

The Cumbria Atlas enables users to explore ward and LSOA level statistics, with national, county, district and urban area comparisons in a user-friendly format combining maps, tables and charts.

Key Contacts

Rebecca Raw

Senior Research, Information & Intelligence Officer, Cumbria County Council

Email: rebecca.raw@cumbria.gov.uk

Tel: 07827 826434