

CUMBRIA LSCB

CUMBRIA LOCAL SAFEGUARDING CHILDREN BOARD

Here is a list of Safeguarding Courses available from Cumbria Safeguarding Children Board

All these are available once you have successfully registered with the Cumbria online e-learning registration system

Awareness of Child Abuse and Neglect Suite:

These four courses cover a variety of child protection and safeguarding children issues and are suitable for anyone who comes into contact with children. They aim to inform about the various types of abuse or neglect to a child and then explain what you must do if you suspect that a child is being abused or neglected.

Awareness of Child Abuse and Neglect – Core:



This course is suitable for everyone who works directly with children and young people, including frontline professionals. This course covers a variety of child protection and safeguarding children issues and is suitable for anyone who regularly comes into contact with children or who may be asked to contribute to the assessment of children in need.

The course aims to inform about the various types of abuse and neglect that can happen to a child and then explain what you must do if you suspect a child is being abused or neglected.

This course allows you to choose the legislation which applies to your country, should it be England, Wales, Scotland or Northern Ireland.

A section of this course looks into multi-agency cooperation focusing specifically at Police, Social Services, Social Housing, Healthcare, Education (Early Years, Primary, Secondary, Further or Higher), Prisons, Secure Units, Probation, Youth Justice Youth Groups Community Groups & Voluntary groups.

Awareness of Child Abuse and Neglect – Foundation:



Aimed at those who have direct contact with children.

This is a slightly shorter version of the Awareness of Child Abuse and Neglect - Core, and it is designed to be suitable for all, not just child specialists.

Introduction to Safeguarding:



Aimed at those who have occasional contact with children.

Think Safe, Be Safe, Stay Safe:



Created with Redcar and Cleveland Junior LSCB, this course is aimed at 11-18 year olds, i.e. peer mentors, baby sisters, work placements.

Further Safeguarding Courses:

Safeguarding Children and Young People from Abuse by Sexual Exploitation:



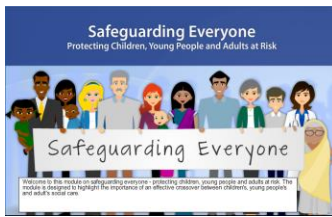
Increases awareness of the main issues in the sexual exploitation of children and young people and raises awareness of the legislation and guidance that applies to vulnerable groups and how these policies can be applied in practice. Aimed at anyone who comes into contact with children and young people during the course of their work.

Safeguarding Children Refresher:



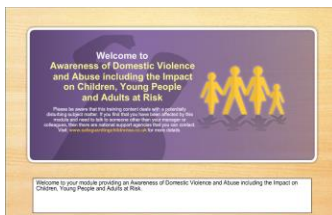
It is a statutory requirement for anyone who works with children to update their knowledge of legislation and guidance in order to maintain the ability to act on any concerns that reflect the welfare of children and young people. This training should be undertaken every three years.

Safeguarding Everyone – Protecting Children, Young People and Adults at Risk:



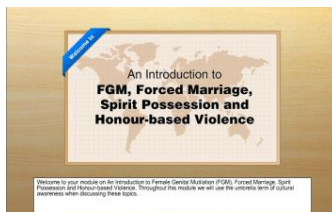
Anyone who works within health and social care understands how important it is to always ensure the safety and security of those in their care. This course provides the knowledge required to recognise the signs of abuse and an understanding of how to respond appropriately to suspected or alleged abuse.

An Awareness of Domestic Violence and Abuse including the Impact on Children, Young People and Adult at Risk:



Helps you to explain, describe and recognise the signs of domestic violence and neglect. It will also help you identify ways to supports victims, identify the 'dos and don'ts', recognise when it is appropriate to assist, know where and when to get help and be aware of best practice.

An Introduction to FGM, Forced Marriage, Spirit Possession and Honour Based Violence:



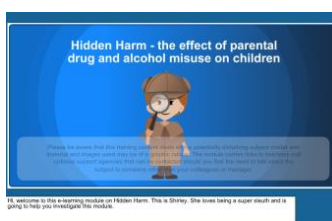
Provides an understanding of Female Genital Mutilation, Honour Based Violence, Spirit Possession and Forced Marriage. These are the four main types of abuse that stem from culture related traditions and this course increases awareness of specific cultural and religious needs whilst providing the knowledge practitioners need to be confident when conversing with those from a different cultural background around the subjects.

E-Safety – Guidance for Practitioners:



Safeguarding risks are associated with the internet and other forms of modern technology. This course helps you understand the different ways children and young people use technology and how this can make them vulnerable.

Hidden Harm – The Effect of Parental Drug and Alcohol Misuse on Children:



When it comes to drug and alcohol misuse in adults focus is often on the parent. This course aims to emphasis the effects on children and young people, raises awareness and helps spot signs and identify appropriate windows to help break the cycle and safeguarding the child.

Safe Sleeping for Babies – Reducing the risk of SIDS:



This course promotes and supports key safe baby sleeping messages, raising the awareness of parents, family members or other people who come into contact with families.

Child Accident Prevention



Unintentional childhood injury results in over 2 million visits to Accident and Emergency; over half of these injuries occur in the home. This Virtual College course intends to raise parents' and carers' understanding of Child Accident Prevention.

Both Parent and Practitioner versions are available.

Safeguarding Children with Disabilities:



This course aims to raise awareness of specific needs of these disabled children in relation to their vulnerability and communication. The course contains an overview of the national and local agenda in relation to children with disabilities, basic knowledge of the range of protection needs of disabled children and information on how you can enable them to communicate about their experiences and provide support.

Short Breaks for Disabled Children:



The courses provide delegates with knowledge and skills in a range of topics from introducing disabilities, managing challenging behaviour, communicating with disabled children.

Safer Recruitment:



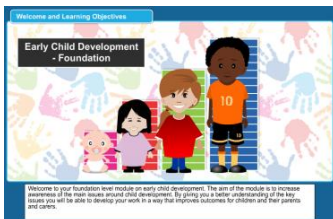
Safer recruitment is key to protecting children in your care. It is a legal requirement that recruitment panels appointing paid staff and volunteers include people trained in safer recruitment.

Safer Working Practices:



This e-learning course has been produced to help staff establish the safest possible learning and working environments.

Early Child Development – Foundation:



This course provides learners with an increased awareness of child development issues and highlights the factors that affect the individual pathway along which each child develops.

Risk Taking Behaviour and young People:



This e-learning course is aimed at anyone working with young people and/or their families. This e-learning course is about teenage pregnancy, drug and alcohol use and wellbeing in sexual health, this is relevant to the teenage population in Cumbria.

Supervision and Appraisal in Early Years Settings:



This course provides advice and guidance that will help you make a smooth and fulfilling transition to a supervisory role and help to ensure that you enjoy a positive professional working relationship with your work colleagues

Wellbeing in Sexual Health:



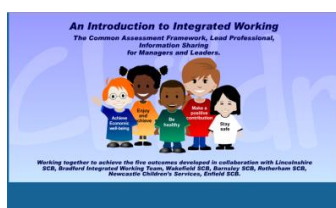
Sexual Health is an important aspect of our physical and mental wellbeing. While sexual behaviour is to be regarded as a natural part of life, certain aspects can also have a negative impact on our health.

Teenage Pregnancy:



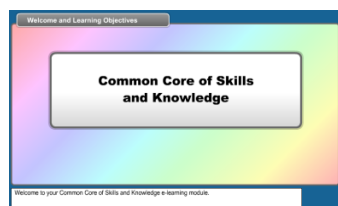
The aim of the module is to increase awareness of the main issues around teenage pregnancy and young people's sexual health. By helping to give the learner a better understanding of these issues, it will help to develop the learner to work in a way that improves outcomes for young people.

Strategic Managers in Integrated Working:



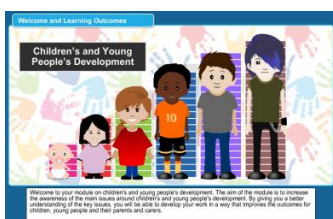
The focus of this course is the integrated working between these people, why it is important, who it can affect and the most effective way to achieve this through the use of three main components. Common Assessment Framework (CAF), Information Sharing and Lead Professional.

Common Core Skills and Knowledge:



This module is designed to be relevant for all staff, paid and voluntary, working with children and young people.

Children's and Young People's Development in Health and Social Care Settings:



This Virtual College course aims to increase awareness of the prime concerns around children's and young people's development. It presents learners with an increased understanding of the expected pattern of development and details the factors that can influence development.

Communication in Health and Social Care or Children's and Young People's Settings:



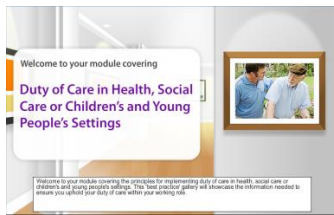
This course has been designed to provide learners with a basic understanding of what communication is, and how it can be used to support people who need help.

Personal Development in Health, Social Care or Children's and Young People's Settings:



This course has been designed for health and social care workers operating in a wide variety of health and social care settings.

Duty of Care in Health, Social Care or Children's and Young People's Settings:



It is vital that those working within health, social care or children and young people's settings not only understand what it means to have a duty of care in their work role but also how to effectively implement duty of care in everything they do.

Equality and Inclusion in Health, Social Care or Children's and Young People's Settings:



This module has been designed to provide learners with the knowledge and skills required to promote and implement equality and inclusion.

Trafficking, Exploitation and Modern Slavery



This course is about understanding, combating and helping people who are being trafficked, exploited or used in modern slavery. It examines different types of exploitation, how individuals become victim to abuse and what actions professionals should take to recognise victims and help them.

Self-harm and Suicidal Thought in Children and Young People



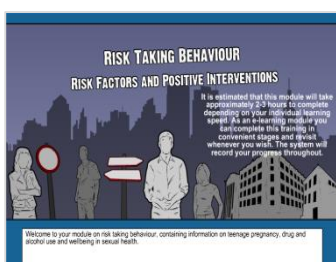
This course aims to educate learners about the warning signs, risk factors and actions to take should they suspect a child or young person is self-harming or having suicidal thoughts.

Hate Crime



This module aims to raise awareness of hate crime and hate incidents and their true extent in our communities. Having completed this e-learning course, learners will have an increased understanding of hate crime and the impact these types of crime have on victims. Learners will also be provided with advice and guidance on how to recognise hate crime as well the appropriate actions to take when reporting hate crime.

Risk Taking Behaviour:



Risk Taking Behaviour can be defined as, 'the tendency to engage in behaviours that have the potential to be harmful or dangerous, yet at the same time provide the opportunity for some kind of outcome that can be perceived as positive.' Clearly from this definition we can see that although such behaviours may seem dangerous are wrong they do have an appeal factor for young people. This training will look at different forms of Risk Taking Behaviours allowing participants to raise awareness, minimise harm and foster a non-judgemental approach.