

Ormsgill

This resource gives an overview of the health profile for wards within Ormsgill.

Inequalities in people's experience of health still present significant challenges in Cumbria, with people in the most affluent areas living up to 20 years longer than those in more disadvantaged circumstances. These unfair and avoidable differences in health between social groups are what we mean by health inequalities. In Cumbria there are a number of areas of concern, including;

- Relatively large numbers of people living in housing that is in poor condition
- High levels of fuel poverty
- A low proportion of the workforce educated to degree level or higher
- Low employment levels amongst people with disabilities
- On average men in Cumbria lose 10 months of life, and women 4.5 months, directly attributable to alcohol
- 50-60 suicides each year.

Ward profiles

Administrative geographies – and particularly wards – have traditionally been used for collecting and publishing statistics. Wards are well-established and, unlike Electoral Divisions, they will not change.

Ward profiles enable us to gain a deeper understanding of the differences in health status between areas.

Electoral Division	Wards in Electoral Division	% of Electoral Division's Population that fall within the Ward
Ormsgill	Hawcoat	7.1
	Ormsgill	86.8
	Parkside	6.1

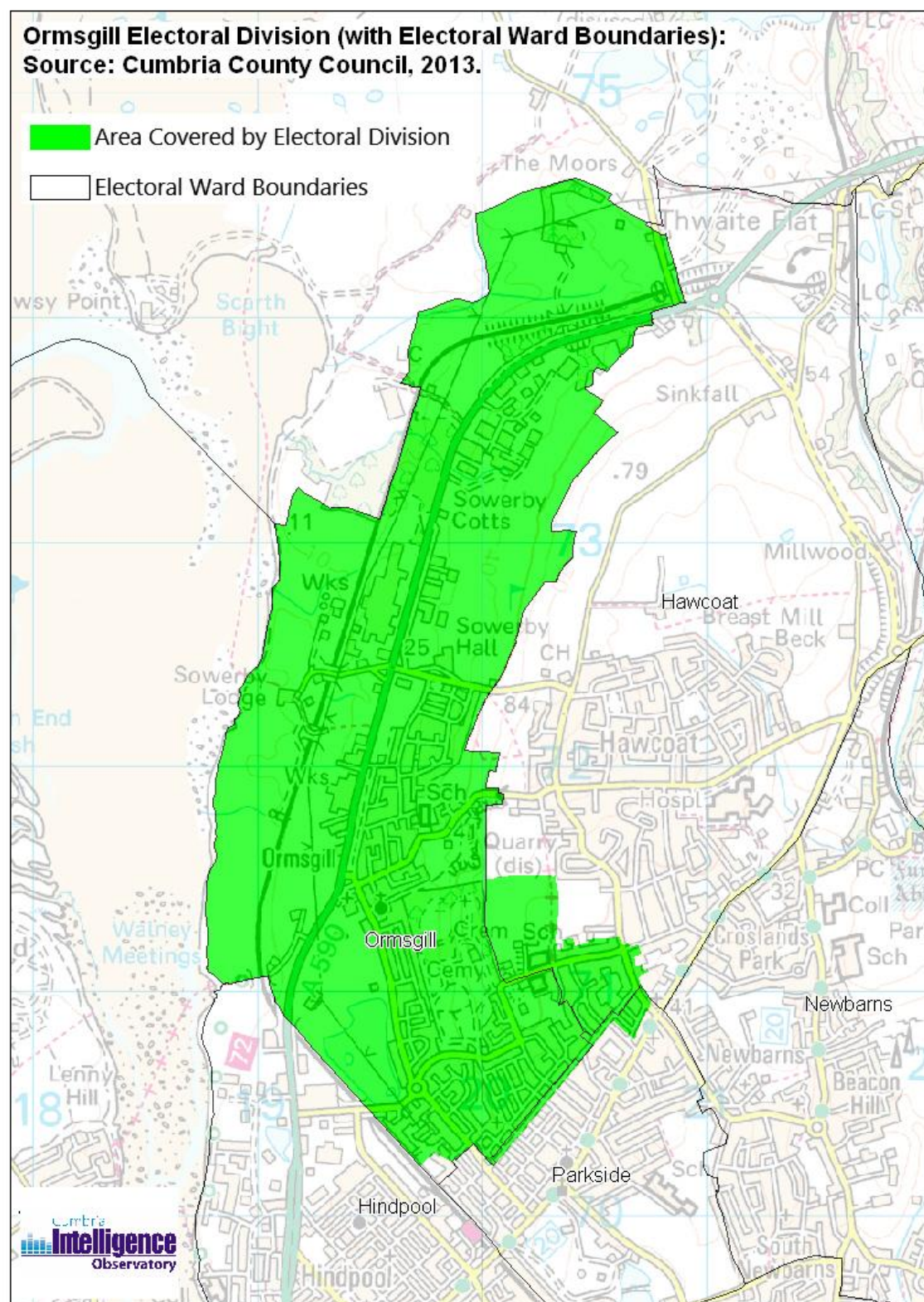
The below data, as well as insights you gain from talking with communities and through working with community groups, are invaluable in gaining an understanding of the health needs and priority in that community.

Other sources of data

Area profiles for each district in Cumbria are available from:

www.apho.org.uk/resource/view.aspx?QN=HP_RESULTS&GEOGRAPHY=16

Cumbria Intelligence Observatory: www.cumbriaobservatory.org.uk/



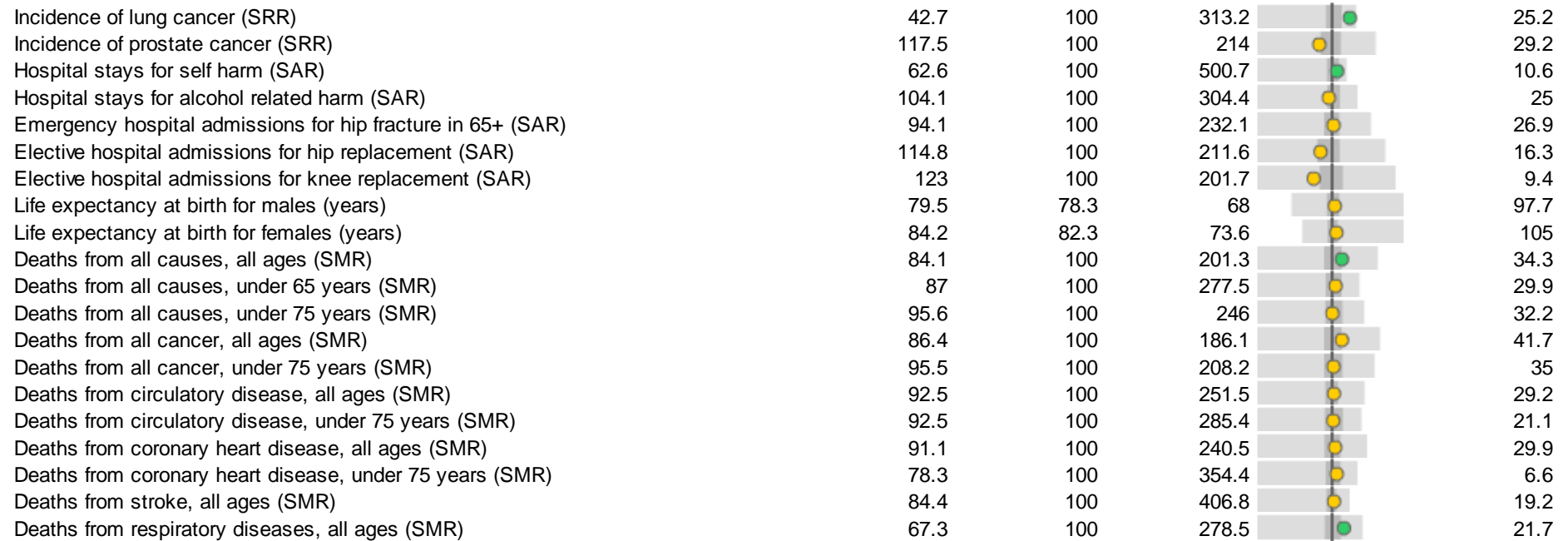
(c) Crown Copyright and Database Right, 2013 Ordnance Survey Licence Number 100019596

Hawcoat Ward, Barrow-in-Furness, Cumbria

Source: www.localhealth.org.uk

Indicators

	Selection value	value England	England worst	Summary chart	England best
Income Deprivation (%)	5.2	14.7	49.8		1.1
Low Birth Weight Births (%)	7.3	7.4	14.1		1.2
Child Poverty (%)	2	21.8	79.8		1
Child Development at age 5 (%)	46.5	58.8	20.3		94.2
GCSE Achievement (5A*-C inc. Eng & Maths) (%)	62.5	58.2	16.3		94.7
Unemployment (%)	1.1	3.6	13.9		0.2
Long Term Unemployment (Rate/1,000 working age population)	0.6	6	41.7		0
General Health - bad or very bad (%)	6.5	5.5	14.8		1.2
General Health - very bad (%)	1.3	1.2	3.7		0.3
Limiting long term illness or disability (%)	26.1	17.6	38.9		5.1
Households with central heating (%)	98.1	97.3	73.7		99.8
Overcrowding (%)	1.2	8.7	45.6		0.7
Provision of 1 hour or more unpaid care per week (%)	15	10.2	16.3		3.3
Provision of 50 hours or more unpaid care per week (%)	3.8	2.4	7.2		0.3
Pensioners living alone (%)	27.5	31.5	63.6		14.4
Older People in Deprivation (%)	9.3	18.1	82.1		2.1
Obese Children (Reception Year) (%)	13.5	9.6	22.8		2.4
Obese Children (Year 6) (%)	11.4	19	32		3.8
Children's and young people's admissions for injury (Crude rate/100,000 aged 0-17)	1092.2	1223.1	2910		317.8
Obese adults (%)	22.4	24.1	34.7		5.9
Binge drinking adults (%)	15.5	20	56.4		3.3
Healthy eating adults (%)	30.6	28.7	12.3		54.1
Emergency hospital admissions for all causes (SAR)	100.2	100	252		27.1
Emergency hospital admissions for CHD (SAR)	105.2	100	436.3		21.7
Emergency hospital admissions for stroke (SAR)	97.6	100	214.9		27.6
Emergency hospital admissions for Myocardial Infarction (heart attack) (SAR)	103.7	100	286.5		11
Emergency hospital admissions for Chronic Obstructive Pulmonary Disease (COPD) (74	100	538.1		11.9
Incidence of all cancer (SRR)	104.2	100	149.9		47.9
Incidence of breast cancer (SRR)	138.8	100	185.7		36.5
Incidence of colorectal cancer (SRR)	134.7	100	224.6		30.2



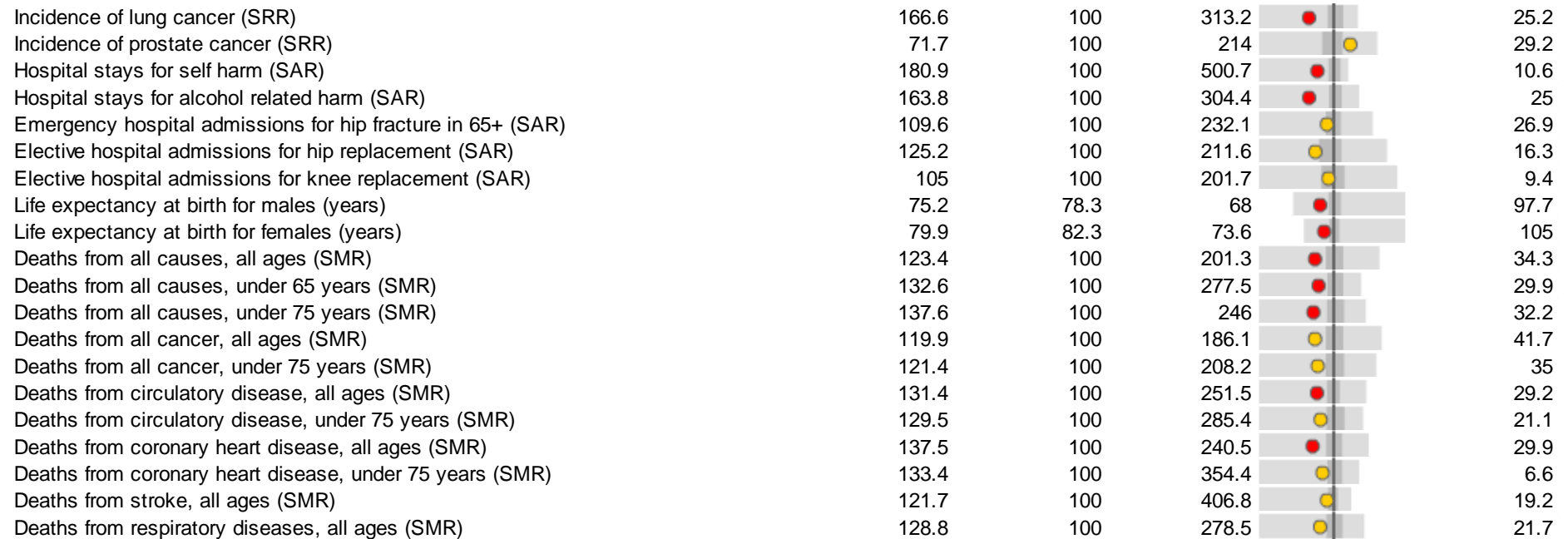
● significantly worse ● significantly better ● not significantly different from average

Ormsgill Ward, Barrow-in-Furness, Cumbria

Source: www.localhealth.org.uk

Indicators

	Selection value	value England	England worst	Summary chart	England best
Income Deprivation (%)	24.7	14.7	49.8		1.1
Low Birth Weight Births (%)	7.9	7.4	14.1		1.2
Child Poverty (%)	32.3	21.8	79.8		1
Child Development at age 5 (%)	36.6	58.8	20.3		94.2
GCSE Achievement (5A*-C inc. Eng & Maths) (%)	52.6	58.2	16.3		94.7
Unemployment (%)	4.7	3.6	13.9		0.2
Long Term Unemployment (Rate/1,000 working age population)	5.7	6	41.7		0
General Health - bad or very bad (%)	10.1	5.5	14.8		1.2
General Health - very bad (%)	2.2	1.2	3.7		0.3
Limiting long term illness or disability (%)	26.5	17.6	38.9		5.1
Households with central heating (%)	92.4	97.3	73.7		99.8
Overcrowding (%)	5.3	8.7	45.6		0.7
Provision of 1 hour or more unpaid care per week (%)	11.5	10.2	16.3		3.3
Provision of 50 hours or more unpaid care per week (%)	3.5	2.4	7.2		0.3
Pensioners living alone (%)	41.4	31.5	63.6		14.4
Older People in Deprivation (%)	29.3	18.1	82.1		2.1
Obese Children (Reception Year) (%)	11.2	9.6	22.8		2.4
Obese Children (Year 6) (%)	23.8	19	32		3.8
Children's and young people's admissions for injury (Crude rate/100,000 aged 0-17)	1577.3	1223.1	2910		317.8
Obese adults (%)	26.3	24.1	34.7		5.9
Binge drinking adults (%)	20.7	20	56.4		3.3
Healthy eating adults (%)	21.3	28.7	12.3		54.1
Emergency hospital admissions for all causes (SAR)	142.6	100	252		27.1
Emergency hospital admissions for CHD (SAR)	168.3	100	436.3		21.7
Emergency hospital admissions for stroke (SAR)	141.5	100	214.9		27.6
Emergency hospital admissions for Myocardial Infarction (heart attack) (SAR)	150.6	100	286.5		11
Emergency hospital admissions for Chronic Obstructive Pulmonary Disease (COPD) (215.9	100	538.1		11.9
Incidence of all cancer (SRR)	113.4	100	149.9		47.9
Incidence of breast cancer (SRR)	100.6	100	185.7		36.5
Incidence of colorectal cancer (SRR)	129.1	100	224.6		30.2



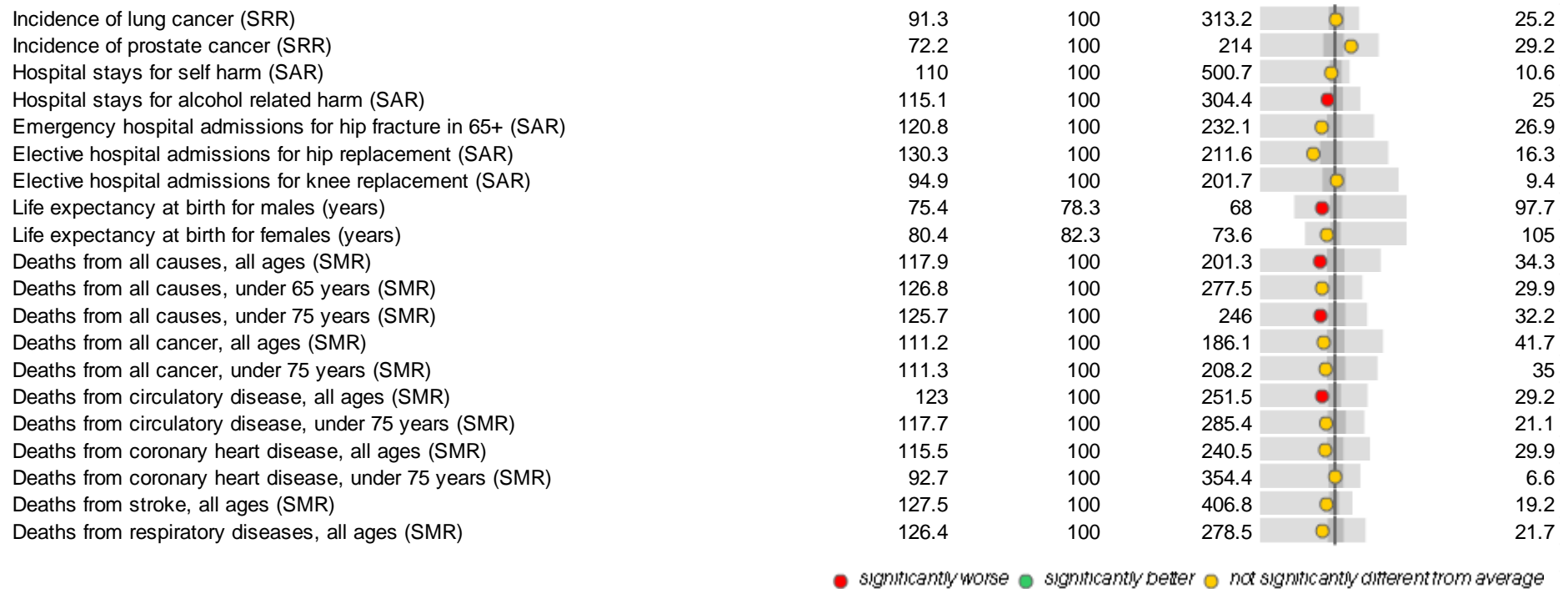
● significantly worse ● significantly better ● not significantly different from average

Parkside Ward, Barrow-in-Furness, Cumbria

Source: www.localhealth.org.uk

Indicators

	Selection value	value England	England worst	Summary chart	England best
Income Deprivation (%)	11.4	14.7	49.8		1.1
Low Birth Weight Births (%)	7.2	7.4	14.1		1.2
Child Poverty (%)	14.4	21.8	79.8		1
Child Development at age 5 (%)	44.2	58.8	20.3		94.2
GCSE Achievement (5A*-C inc. Eng & Maths) (%)	58.6	58.2	16.3		94.7
Unemployment (%)	2.6	3.6	13.9		0.2
Long Term Unemployment (Rate/1,000 working age population)	2.6	6	41.7		0
General Health - bad or very bad (%)	5.8	5.5	14.8		1.2
General Health - very bad (%)	1.1	1.2	3.7		0.3
Limiting long term illness or disability (%)	20.5	17.6	38.9		5.1
Households with central heating (%)	92.7	97.3	73.7		99.8
Overcrowding (%)	2.4	8.7	45.6		0.7
Provision of 1 hour or more unpaid care per week (%)	11	10.2	16.3		3.3
Provision of 50 hours or more unpaid care per week (%)	2.5	2.4	7.2		0.3
Pensioners living alone (%)	36.5	31.5	63.6		14.4
Older People in Deprivation (%)	17.4	18.1	82.1		2.1
Obese Children (Reception Year) (%)	9.4	9.6	22.8		2.4
Obese Children (Year 6) (%)	20	19	32		3.8
Children's and young people's admissions for injury (Crude rate/100,000 aged 0-17)	1516.3	1223.1	2910		317.8
Obese adults (%)	24.7	24.1	34.7		5.9
Binge drinking adults (%)	21.5	20	56.4		3.3
Healthy eating adults (%)	25.6	28.7	12.3		54.1
Emergency hospital admissions for all causes (SAR)	114.8	100	252		27.1
Emergency hospital admissions for CHD (SAR)	100.7	100	436.3		21.7
Emergency hospital admissions for stroke (SAR)	114.8	100	214.9		27.6
Emergency hospital admissions for Myocardial Infarction (heart attack) (SAR)	84.9	100	286.5		11
Emergency hospital admissions for Chronic Obstructive Pulmonary Disease (COPD) (129.6	100	538.1		11.9
Incidence of all cancer (SRR)	106.6	100	149.9		47.9
Incidence of breast cancer (SRR)	97.4	100	185.7		36.5
Incidence of colorectal cancer (SRR)	130.4	100	224.6		30.2



LOCAL HEALTH METADATA

- Income Deprivation: % living in income deprived households, Indices of Deprivation, 2010
- Low Birth Weight Births: % of live and still births with weight <2500g, ONS, 2007-2011
- Child Poverty: % aged 0-15 living in income deprived households, IDACI, 2010
- Child development at age 5: % of pupils achieving a good level of development, DfE, 2010/11
- GCSE achievement: % achieving 5 A*-C grades including English and Maths, DfE, 2010/11
- Unemployment: % of working age population claiming out of work benefit, NOMIS, 2010/11

- Long term unemployment: Crude rate per 1000 working age population who has been claiming for more than 12 months, NOMIS, 2010/11
- General Health – bad or very bad, %, Census 2011
- General Health – very bad, %, Census 2011
- Limited long term illness or disability: % with limiting long term illness or disability, ONS, Census 2011
- Households with central heating, %, Census 2011
- Overcrowding, households with at least 1 room too few, Census 2011
- Provision of 1 hour or more unpaid care per week, %, Census 2011
- Provision of 50 hours or more unpaid care per week, %, Census 2011
- Pensioners living alone, %, Census 2011
- Older people in deprivation: % aged over 60 living in pension credit households, IDAOPI, 2010
- Obese children (Reception Year), National Child Measurement Programme, %, 2009/10-2011/12
- Obese children (Year 6), National Child Measurement Programme, %, 2009/10-2011/12
- Children's and young people's admissions for injury: crude rate per 100,000 aged 0-17, HES, 2006/7-2010/11
- Obese adults (modelled estimates using Health Survey for England), %, 2006-2008
- Binge drinking adults (modelled estimates using Health Survey for England), %, 2006-2008
- Healthy eating adults (modelled estimates using Health Survey for England), %, 2006-2008
- Emergency hospital admissions for all causes, SAR*, HES, 2006/7-2010/11
- Emergency hospital admissions for coronary heart disease, SAR*, HES, 2006/7-2010/11
- Emergency hospital admissions for stroke, SAR*, HES, 2006/7-2010/11
- Emergency hospital admissions for myocardial infarction, SAR*, HES, 2006/7-2010/11
- Emergency hospital admissions for stroke, SAR*, HES, 2006/7-2010/11
- Emergency hospital admissions for chronic obstructive pulmonary disease, SAR*, HES, 2006/7-2010/11
- Incidence of all cancer: SRR, National Cancer Data Repository, 2005-2009
- Incidence of breast cancer: SRR, National Cancer Data Repository, 2005-2009
- Incidence of colorectal cancer: SRR, National Cancer Data Repository, 2005-2009
- Incidence of lung cancer: SRR, National Cancer Data Repository, 2005-2009
- Incidence of prostate cancer: SRR, National Cancer Data Repository, 2005-2009
- Hospital admissions for self-harm: SAR*, HES, 2006/7-2010/11

- Hospital admissions for alcohol related harm: SAR*, HES, 2006/7-2010/11
- Emergency hospital admissions for hip fracture in 65+: SAR*, HES, 2006/7-2010/11
- Elective hospital admissions for hip replacement: SAR*, HES, 2006/7-2010/11
- Elective hospital admissions for knee replacement: SAR*, HES, 2006/7-2010/11
- Life expectancy at birth - males (years), ONS, 2006-2010
- Life expectancy at birth - females (years), ONS, 2006-2010
- Deaths from all causes, all ages, SMR+, ONS, 2006-2010
- Deaths from all causes, under 65 years, SMR+, ONS, 2006-2010
- Deaths from all causes, under 75 years, SMR+, ONS, 2006-2010
- Deaths from all cancer, all ages, SMR+, ONS, 2006-2010
- Deaths from all cancer, under 75 years, SMR+, ONS, 2006-2010
- Deaths from circulatory disease, all ages, SMR+, ONS, 2006-2010
- Deaths from circulatory disease, under 75 years, SMR+, ONS, 2006-2010
- Deaths from coronary heart disease, all ages, SMR+, ONS, 2006-2010
- Deaths from coronary heart disease, under 75 years, SMR+, ONS, 2006-2010
- Deaths from stroke, all ages, SMR+, ONS, 2006-2010
- Deaths from respiratory disease, all ages, SMR+, ONS, 2006-2010

*SAR=Standardised Admissions Ratio

^SRR=Standardised Registration Ratio

+SMR=Standardised Mortality Ratio