

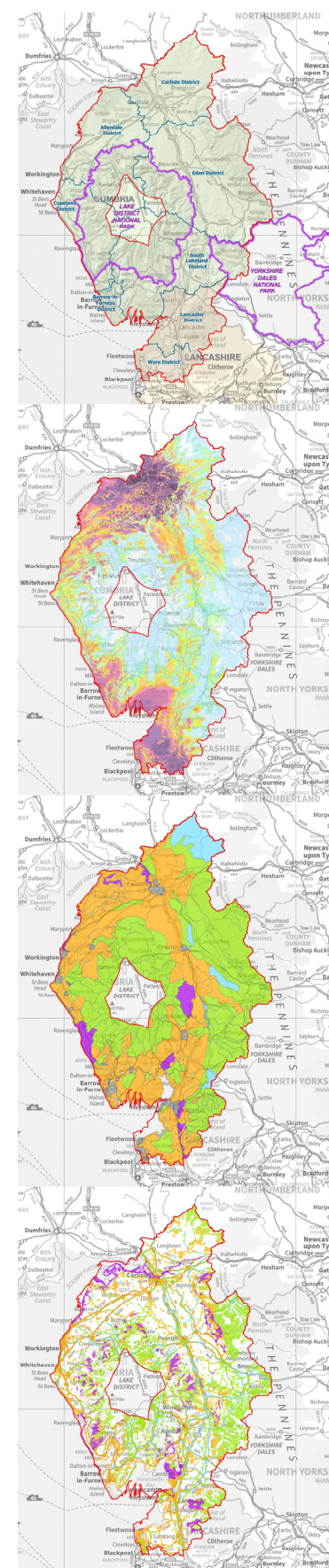
Cumbria County Council

Cumulative Impacts of Vertical Infrastructure:

Appendix 2:

Book of Maps

WYG/A072895-1/October 2014





Document Control

Document: Book of Maps
Project: Cumulative Impacts of Vertical Infrastructure
Client: Cumbria County Council
Job Number: A072895-1
File Origin: W:\A072000-A072999\A072895-1 - Cumbria CC Landscape\A072895-1 CIVI\A072895-1 CIVI Reports\A072895-1 CIVI Book of Maps cover.docx

Versions

Revision:	V2, Final	
Date:	30 October 2014	
Prepared by	Checked by	Approved By
Tim Phillips MSc	M. O'Connor CMLI	M. O'Connor CMLI
Description of Revision	Final for issue	



WYG

5th Floor Longcross Court
47 Newport Road
Cardiff CF24 0AD
E: planning.cardiff@wyg.com
www.wyg.com

This report has been prepared by WYG for **Cumbria County Council** and their partners.

All photographs copyright Cumbria County Council; all other images copyright WYG, except as indicated.

Ordnance Survey data reproduced by permission of Ordnance Survey on behalf of the Controller of Her Majesty’s Stationery Office. © Crown copyright and dataset right 2014. All rights reserved. WYG Environment Planning Transport Limited 2014. License no.: AR 1000 17603.

© WYG Environment Planning Transport Limited Registered in England No. 3050297. September 2014

Document navigation

Part 1 – Key Findings & Guidance

Part 2 – The Assessment

Appendix 1 - GIS Technical Report



Appendix 2 - Book of Maps

Appendix 3 - Ground Truthing

Appendix 4 - Landscape Character Assessment Tables



Contents

Study Area Map Series **SA**

Landscape Character Assessments Map Series **LCA**

Visual Receptors Map Series **VR**

Landscape Designations & Policies Map Series **DES**

Landscape Category Map Series **CAT**

Vertical Infrastructure Map Series **VI**

Zone of Theoretical VisibilityMap Series **ZTV**

Susceptibility Map Series **SUS**

Sensitivity Map Series **SEN**

Magnitude of Change Map Series **MAG**

Significance of EffectsMap Series **SIG**

Nationally Significant Infrastructure ProjectsMap Series **NSI**

Temporal DistributionMap Series **TMP**

The outputs from the CIVI Study

1.1.1 A suite of reports, maps and associated tabulated information was produced in the course of the Study. This document is [Appendix 2 Book of Maps](#), a set of 145 maps, generated from each stage of the Study, from mapping the study area extents and the vertical infrastructure whose cumulative effects were assessed, through mapping the outputs of each of the assessment stages, to maps of the findings of the overall significance of cumulative landscape and visual effects.

1.1.2 The other documents comprise:

Part 1 Key Findings & Guidance

Summarises how the assessment was carried out and the findings of the assessment and; provides general guidance to users of the assessment and a step-wise process for appraising proposals for other developments involving vertical infrastructure elements and their cumulative effects.

Part 2 The Assessment

Provides the background to the study, the details of the assessment methodology and how it was derived and carried out, and sets out the details of the findings of the assessed.

Appendix 1 GIS Technical Report

Provides information about the GIS at the heart of the Study and which was fundamental to the assessment; details the data collected, the analyses and techniques employed to inform the assessment, and guidance for using the CIVI datasets

Appendix 3 Ground Truthing

The details of the ground truthing exercise, with tabulated information for each of the 52 selected viewpoints accompanied by photographs and location maps.

Appendix 4 Landscape Character Assessment Tables

Landscape character information was collated from the assessments carried out by each of the authorities within the study area summarised in a consistent tabulated format under headings for each landscape area of: Overview, Key characteristics, Sensitivities in relation to vertical structures, and Guidance in relation to vertical structures.