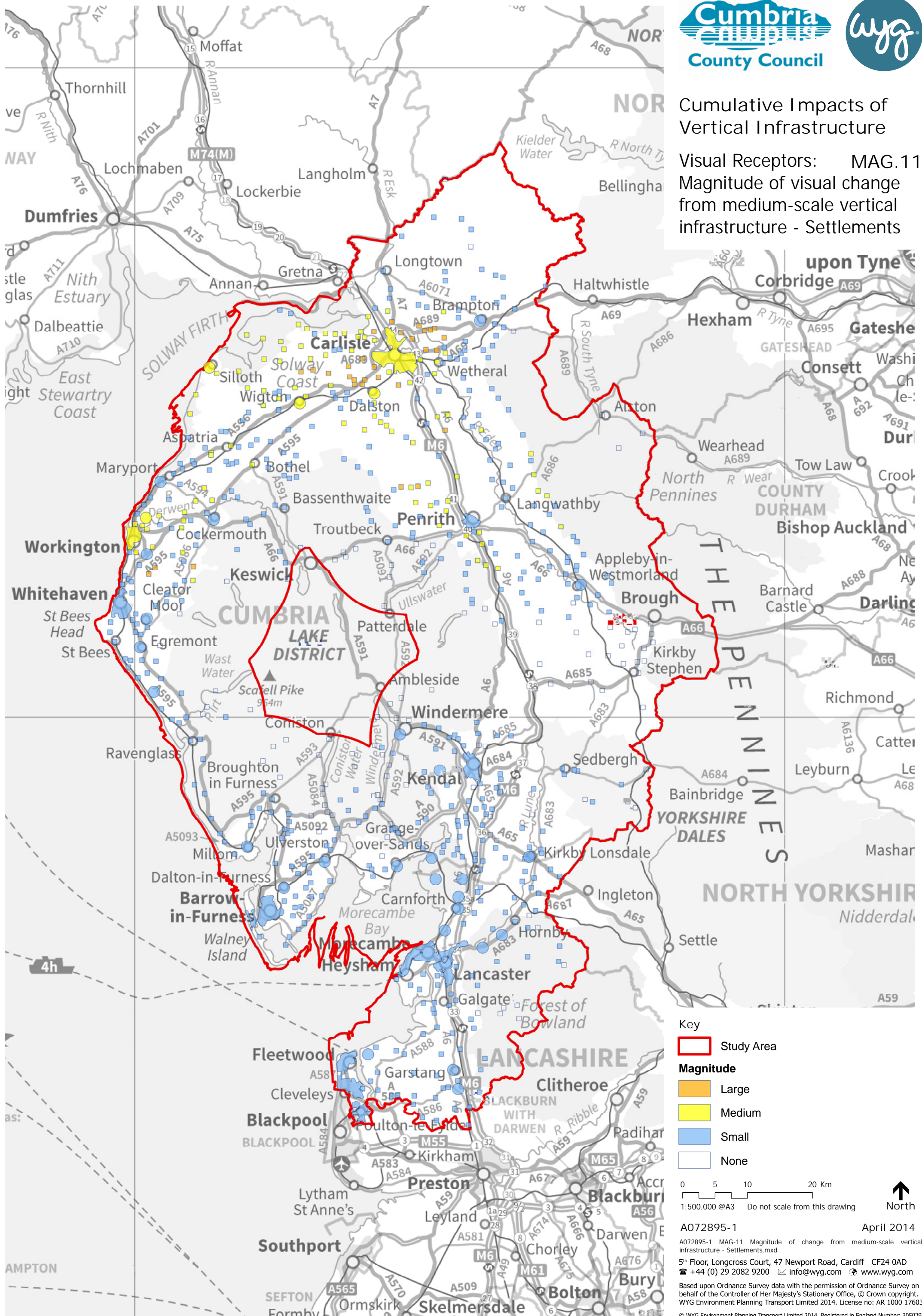


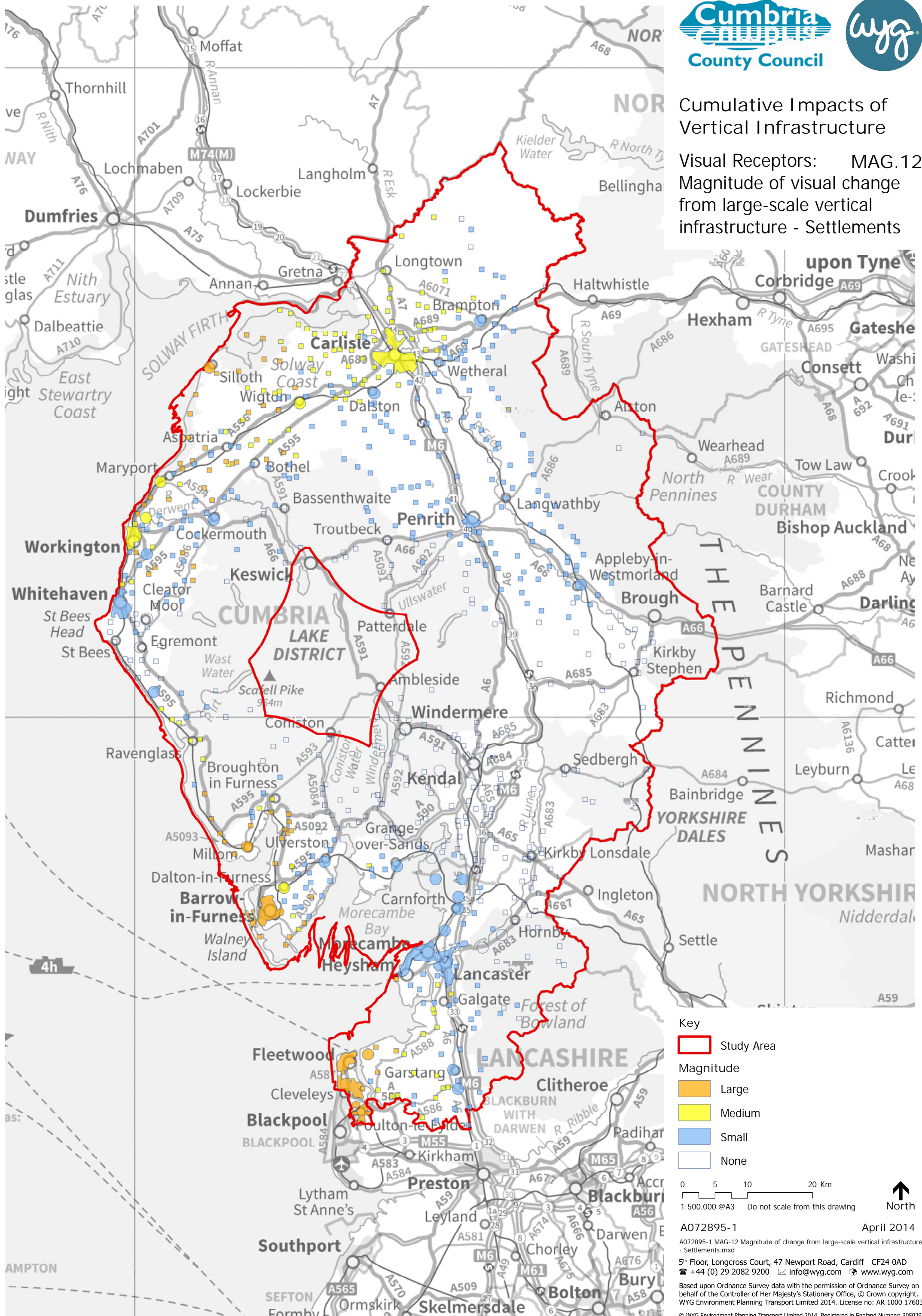
Cumulative Impacts of Vertical Infrastructure

Visual Receptors: MAG.11
Magnitude of visual change from medium-scale vertical infrastructure - Settlements



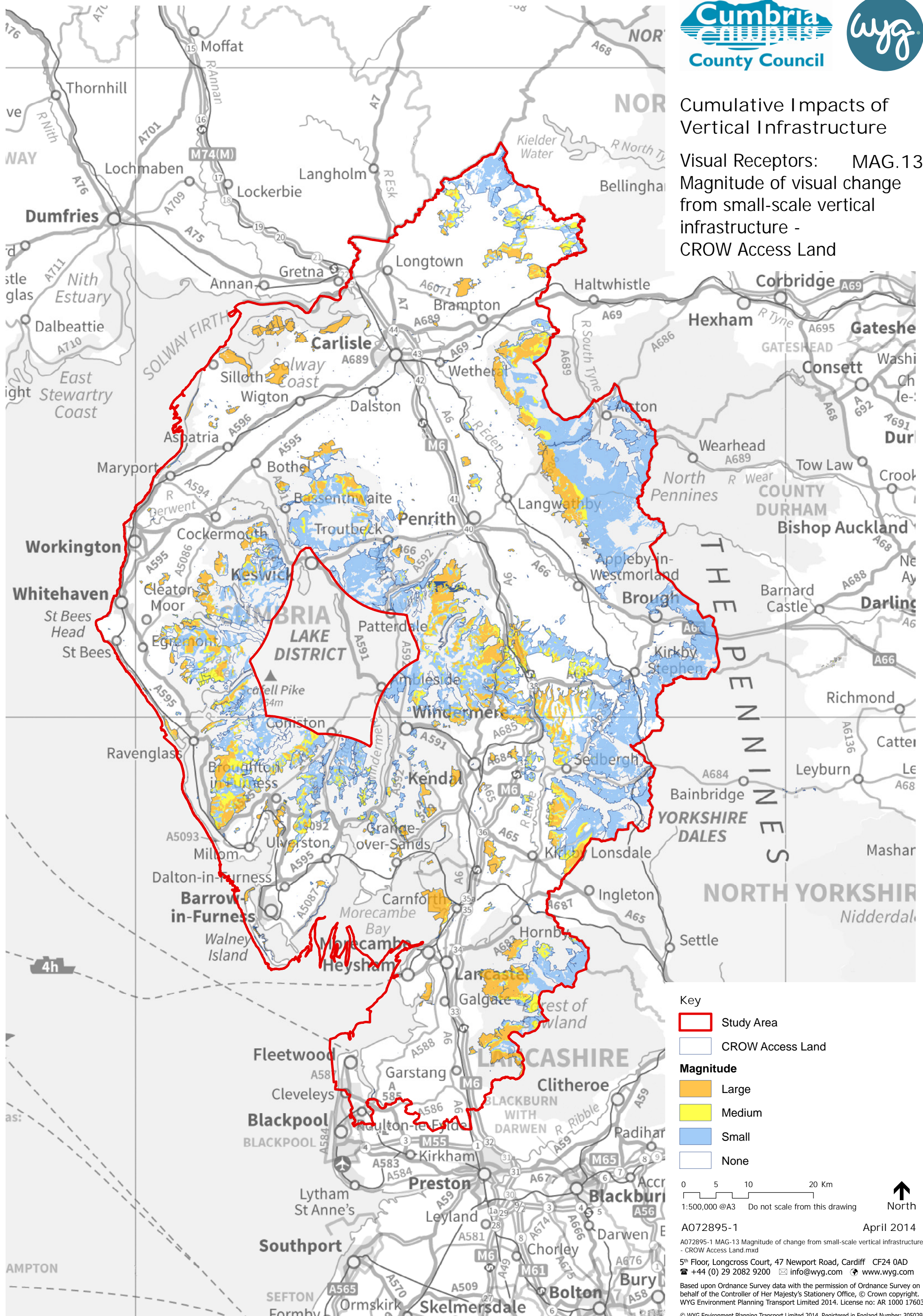
Cumulative Impacts of Vertical Infrastructure

Visual Receptors: MAG.12
Magnitude of visual change from large-scale vertical infrastructure - Settlements



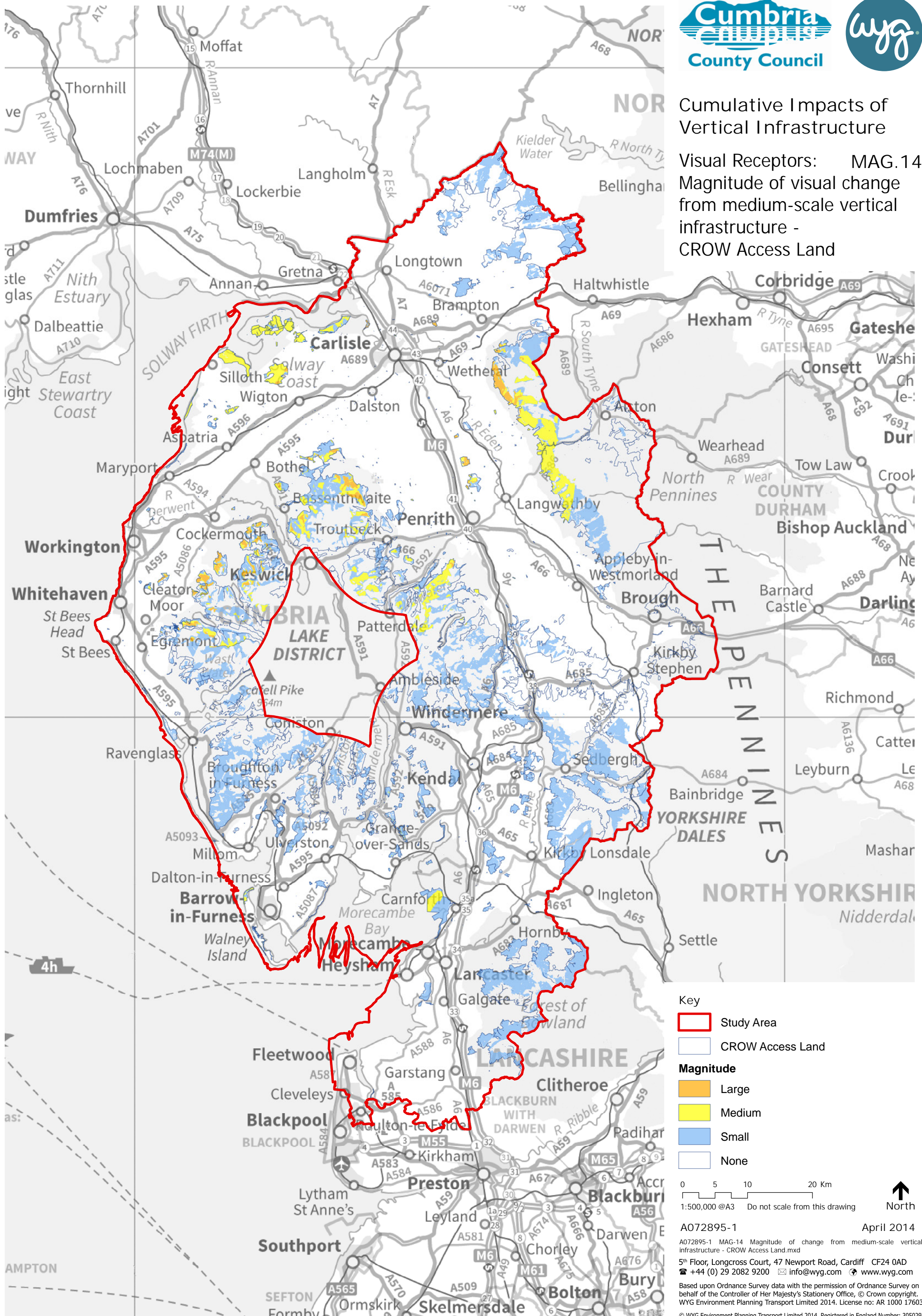
Cumulative Impacts of Vertical Infrastructure

Visual Receptors: MAG.13
Magnitude of visual change from small-scale vertical infrastructure - CROW Access Land



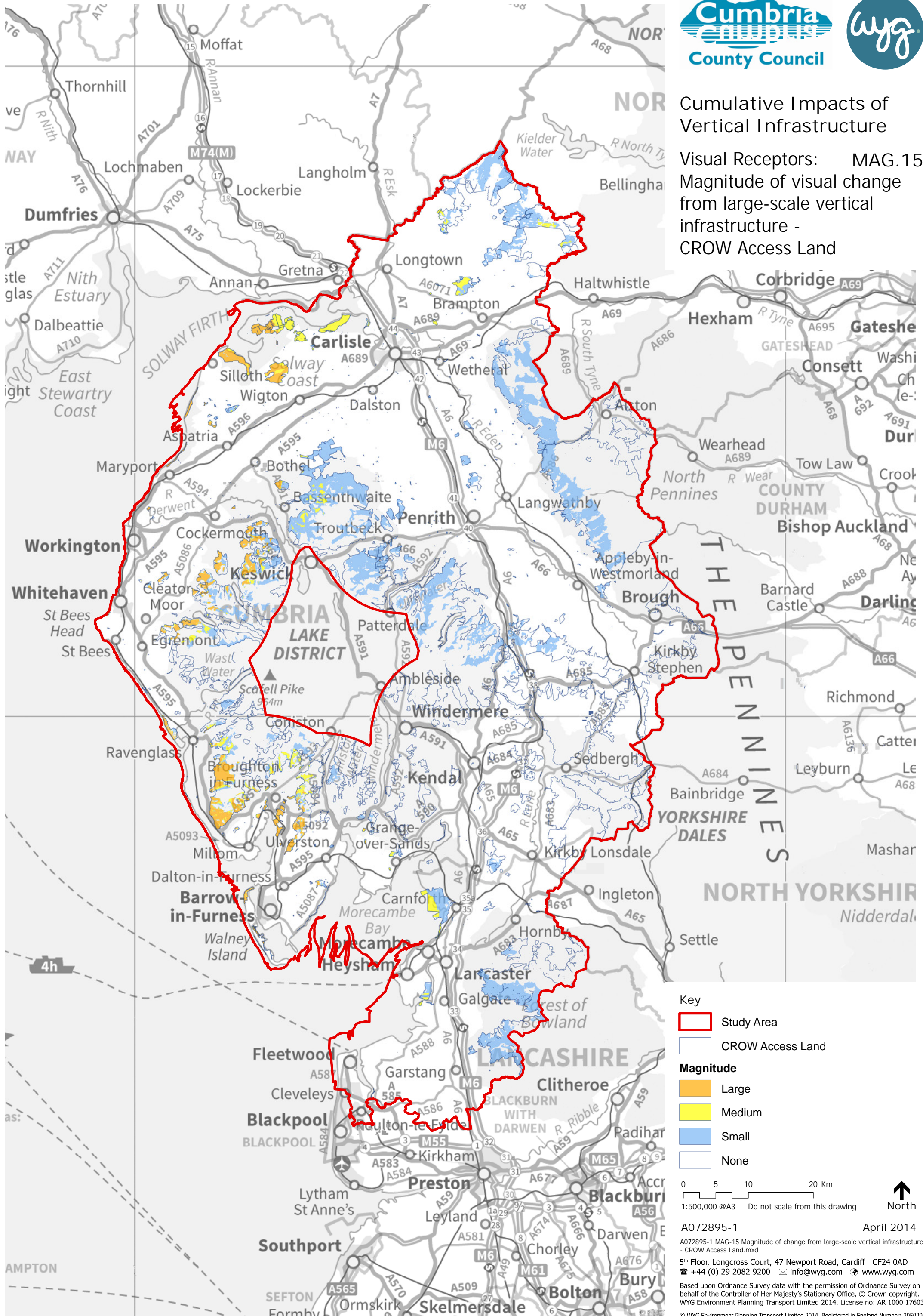
Cumulative Impacts of Vertical Infrastructure

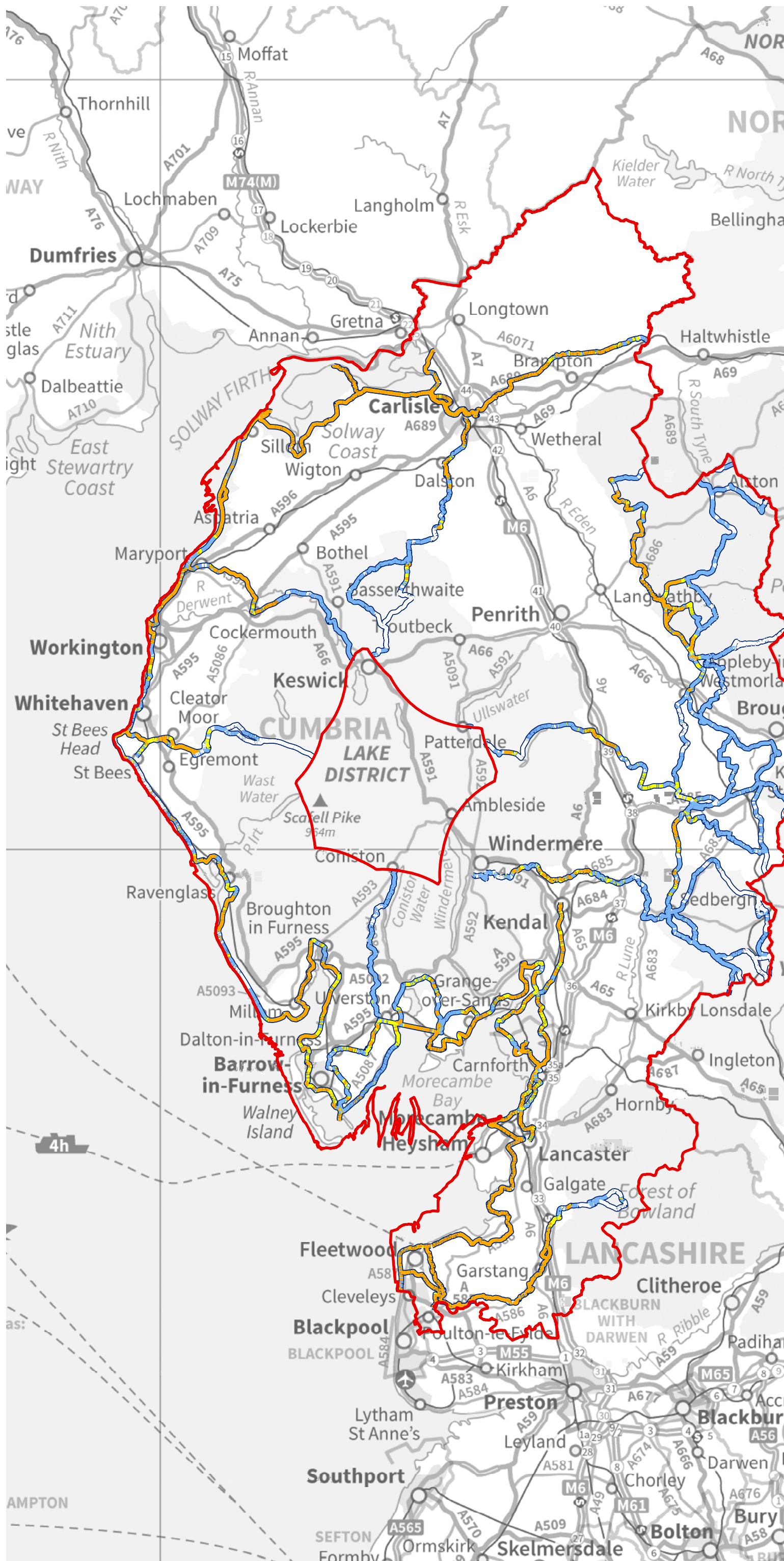
Visual Receptors: MAG.14
Magnitude of visual change from medium-scale vertical infrastructure - CROW Access Land



Cumulative Impacts of Vertical Infrastructure

Visual Receptors: MAG.15
Magnitude of visual change from large-scale vertical infrastructure - CROW Access Land





Cumulative Impacts of Vertical Infrastructure

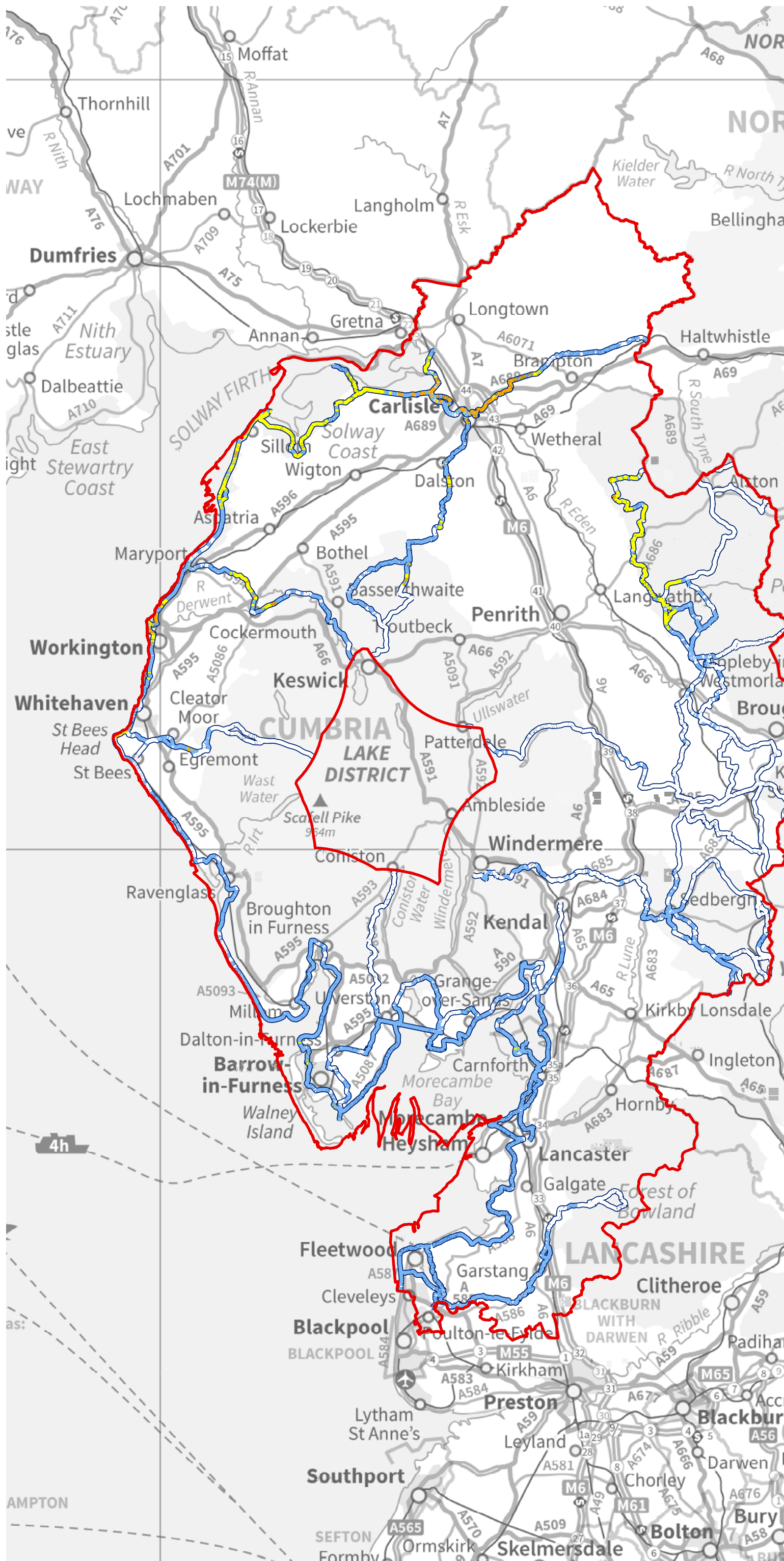
Visual Receptors: MAG.16
Magnitude of visual change from small-scale vertical infrastructure - Long Distance Footpaths

Key
Study Area

Magnitude
Large
Medium
Small
None

0 5 10 20 Km
1:500,000 @A3 Do not scale from this drawing





Cumulative Impacts of Vertical Infrastructure

Visual Receptors: MAG.17
Magnitude of visual change from medium-scale vertical infrastructure - Long Distance Footpaths

Key

- Study Area
- Magnitude**
- Large
- Medium
- Small
- None

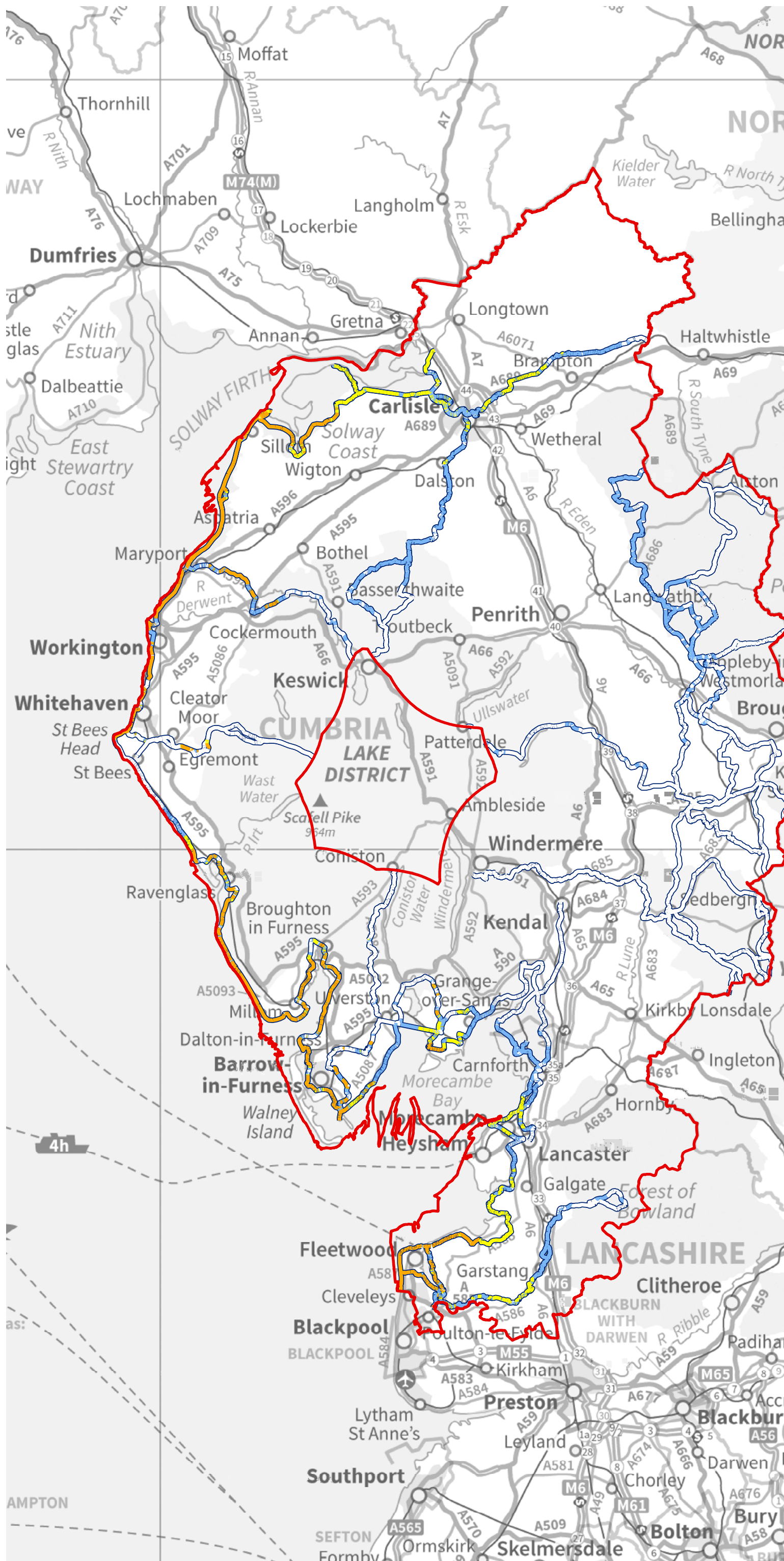
0 5 10 20 Km
1:500,000 @A3 Do not scale from this drawing

North

A072895-1 April 2014

A072895-1 MAG.17 Magnitude of change from medium-scale vertical infrastructure - Long Distance Footpaths.mxd
5th Floor, Longcross Court, 47 Newport Road, Cardiff CF24 0AD
+44 (0) 29 2082 9200 info@wyg.com www.wyg.com

Based upon Ordnance Survey data with the permission of Ordnance Survey on behalf of the Controller of Her Majesty's Stationery Office, © Crown copyright. WYG Environment Planning Transport Limited 2014. License no: AR 1000 17603
© WYG Environment Planning Transport Limited 2014. Registered in England Number: 3050297



Cumulative Impacts of Vertical Infrastructure

Visual Receptors: MAG.18
Magnitude of visual change from large-scale vertical infrastructure - Long Distance Footpaths

Key
Study Area

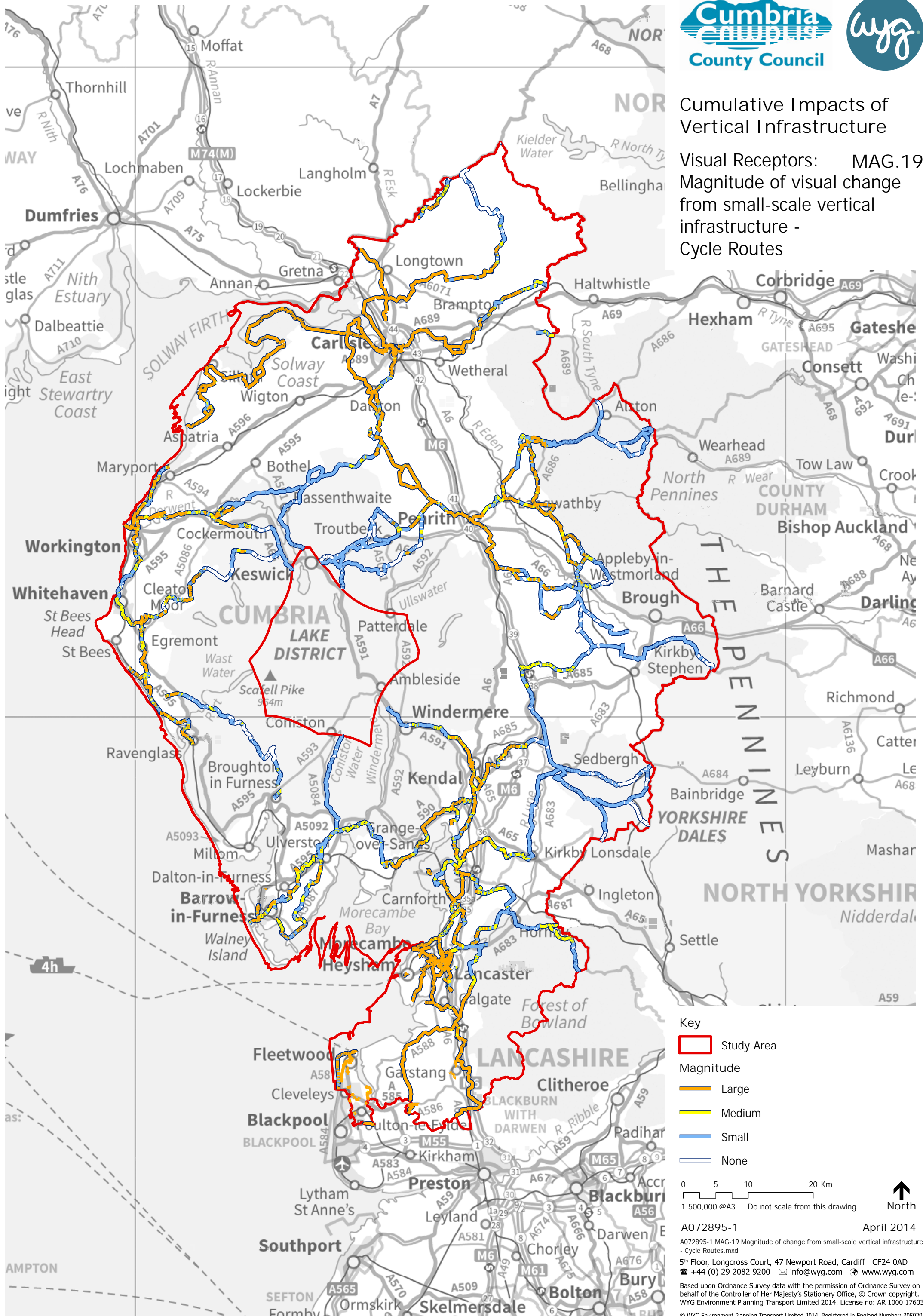
Magnitude
Large
Medium
Small
None

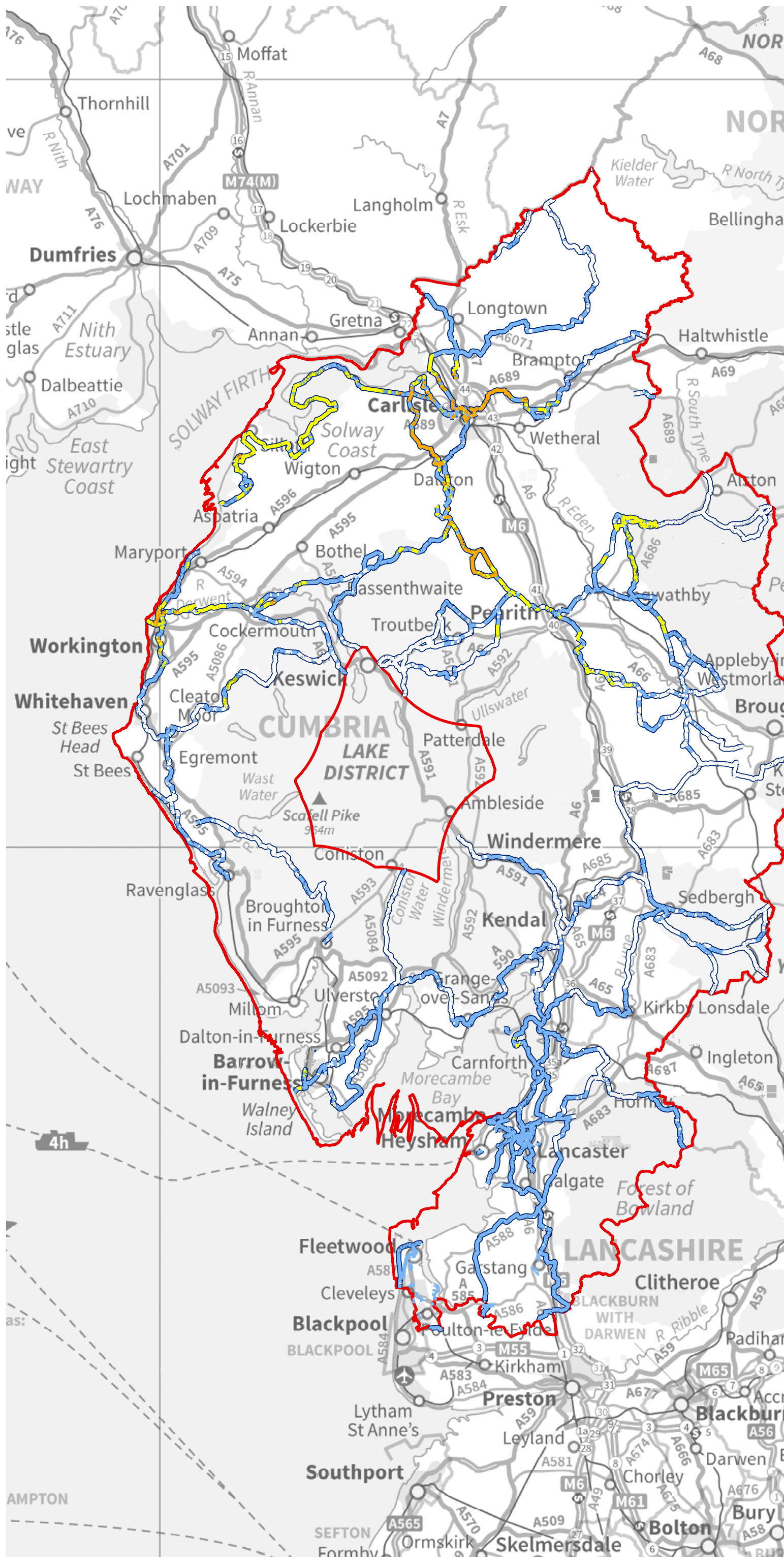
0 5 10 20 Km
1:500,000 @A3 Do not scale from this drawing



Cumulative Impacts of Vertical Infrastructure

Visual Receptors: MAG.19
Magnitude of visual change from small-scale vertical infrastructure - Cycle Routes





Cumulative Impacts of Vertical Infrastructure

Visual Receptors: MAG.20
Magnitude of visual change from medium-scale vertical infrastructure - Cycle Routes

Key
Study Area

Magnitude
Large
Medium
Small
None

0 5 10 20 Km
1:500,000 @A3 Do not scale from this drawing

