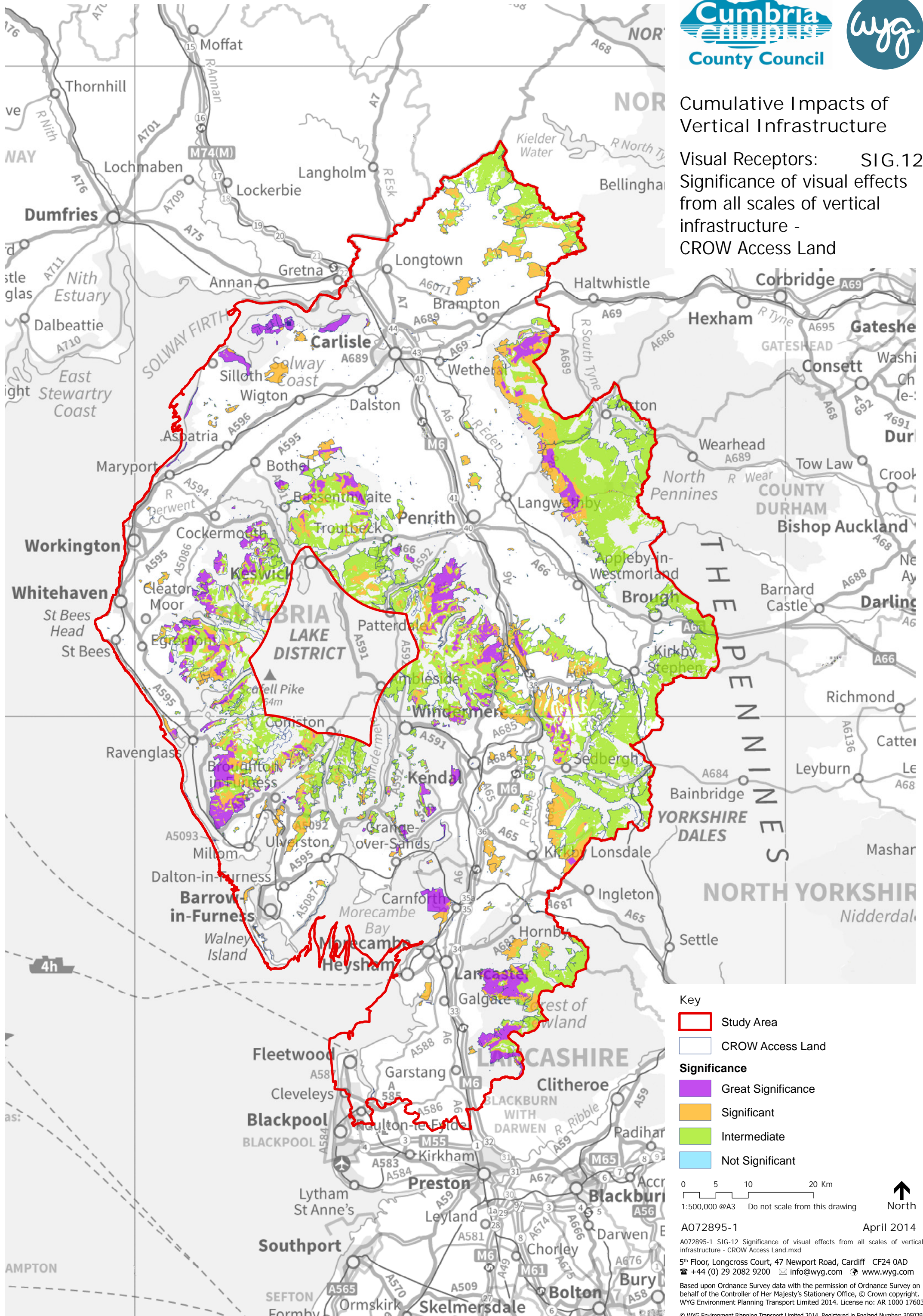


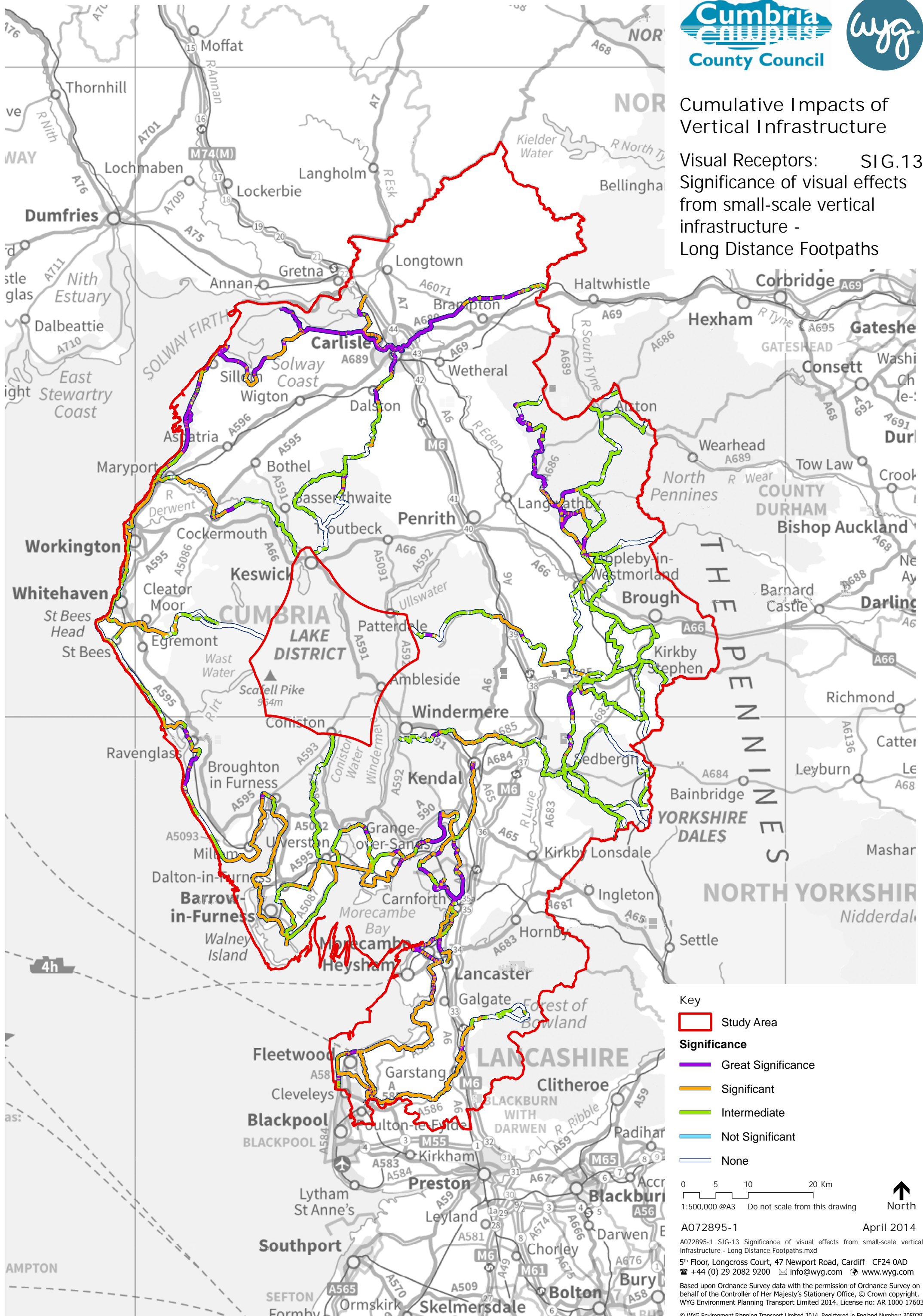
Cumulative Impacts of Vertical Infrastructure

Visual Receptors: SIG.12
Significance of visual effects from all scales of vertical infrastructure - CROW Access Land



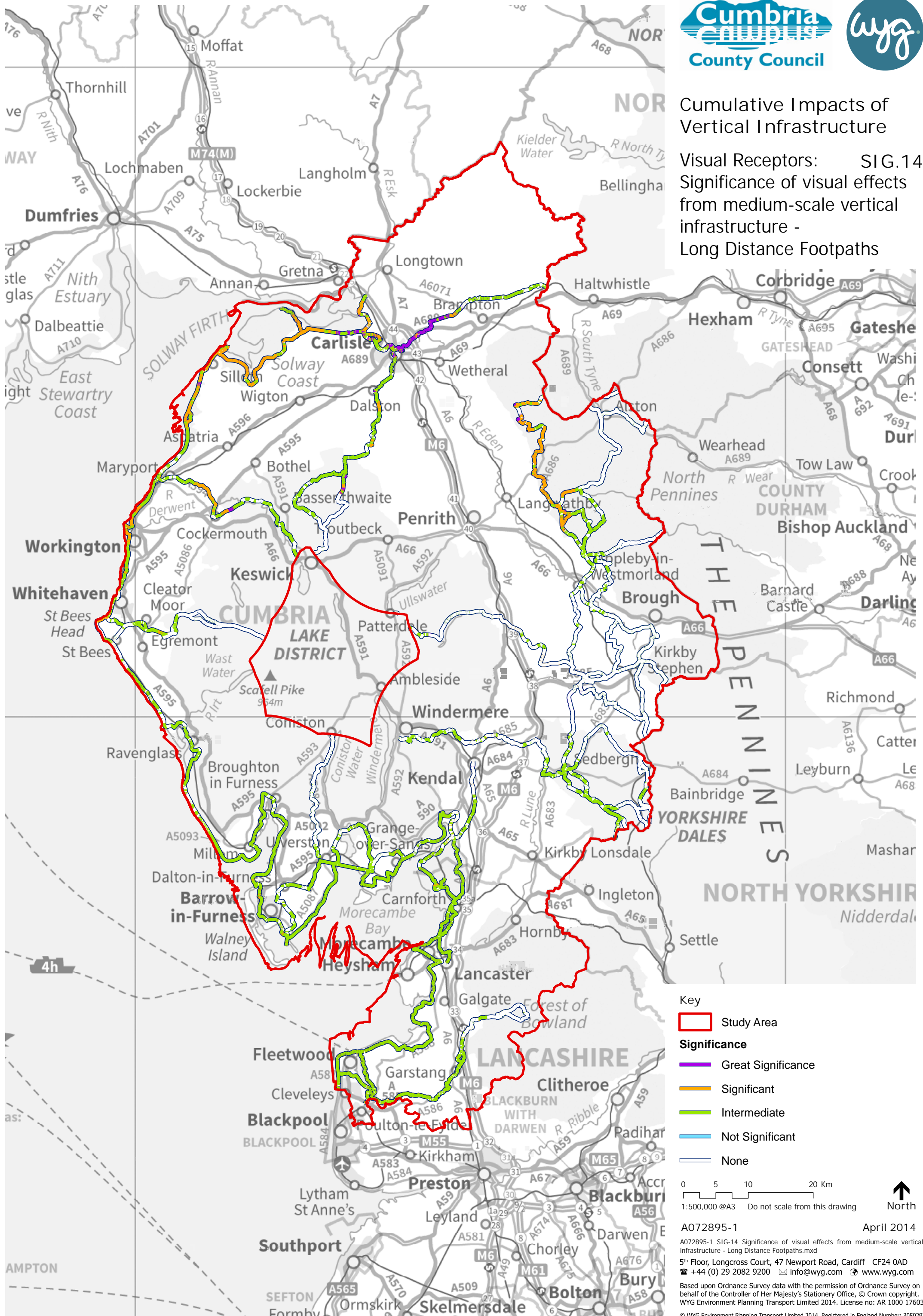
Cumulative Impacts of Vertical Infrastructure

Visual Receptors: SIG.13
Significance of visual effects from small-scale vertical infrastructure - Long Distance Footpaths



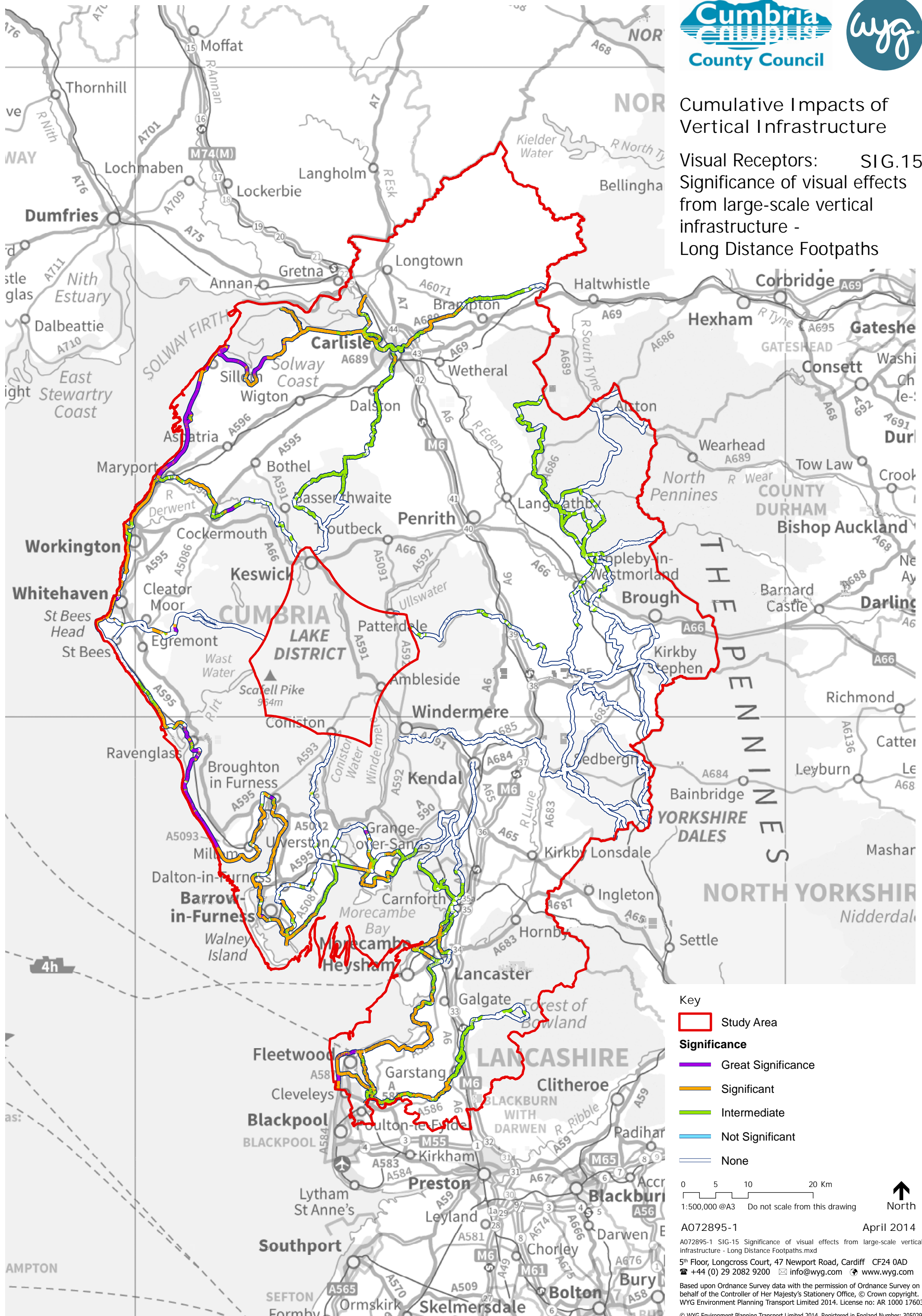
Cumulative Impacts of Vertical Infrastructure

Visual Receptors: SIG.14
Significance of visual effects from medium-scale vertical infrastructure - Long Distance Footpaths



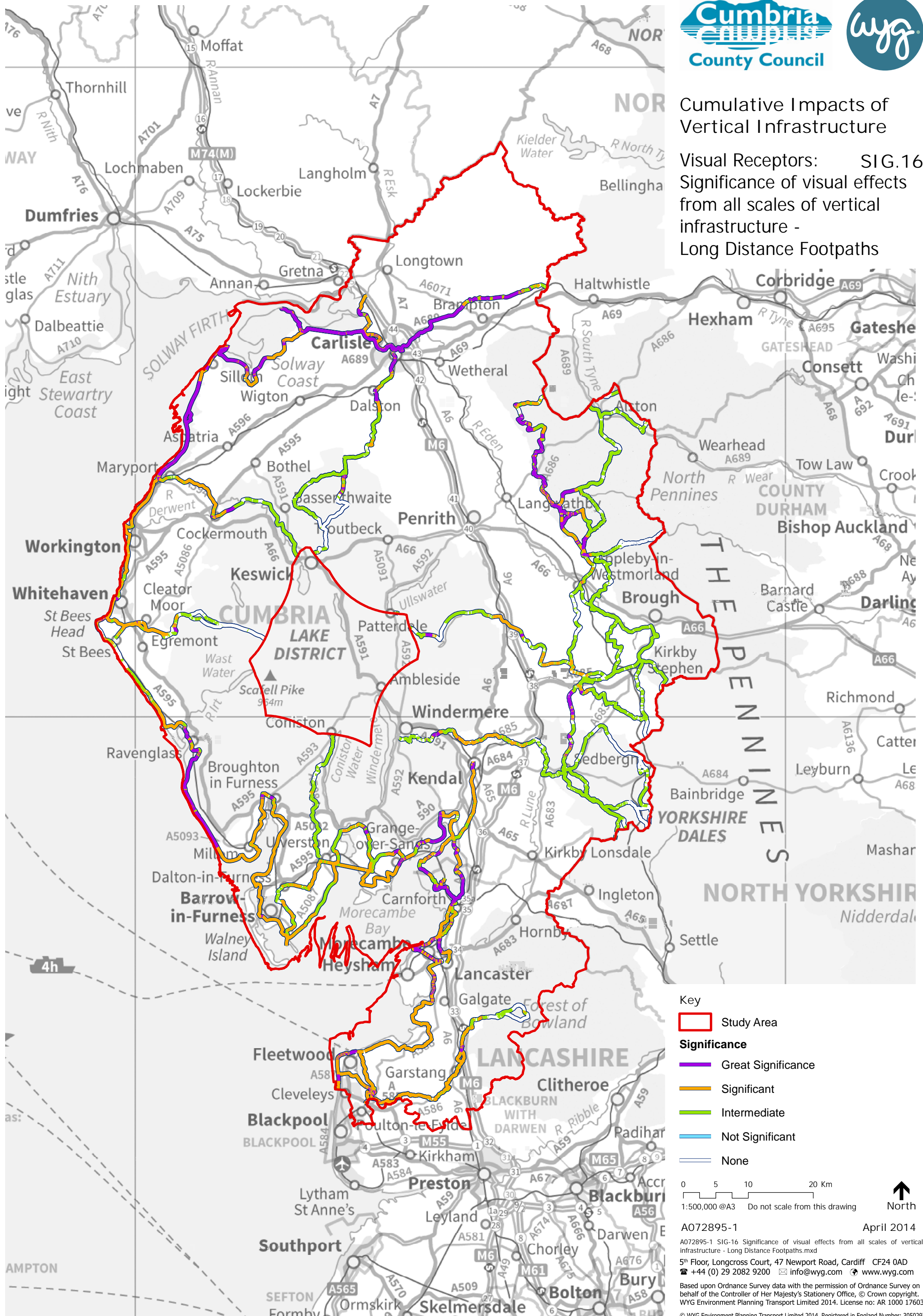
Cumulative Impacts of Vertical Infrastructure

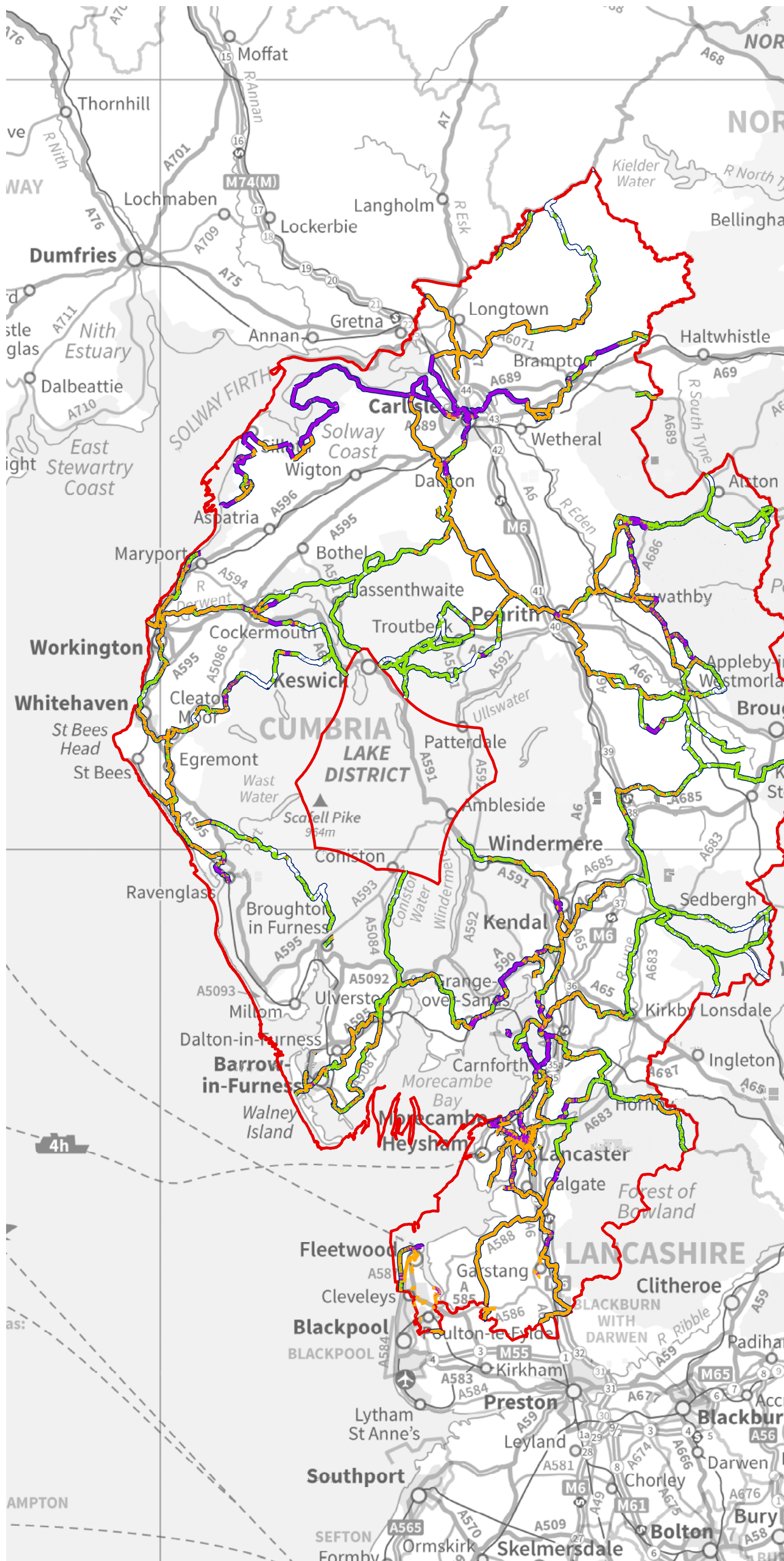
Visual Receptors: SIG.15
Significance of visual effects from large-scale vertical infrastructure - Long Distance Footpaths



Cumulative Impacts of Vertical Infrastructure

Visual Receptors: SIG.16
Significance of visual effects from all scales of vertical infrastructure - Long Distance Footpaths





Cumulative Impacts of Vertical Infrastructure

Visual Receptors: SIG.17
Significance of visual effects from small-scale vertical infrastructure - Cycle Routes

Key
Study Area

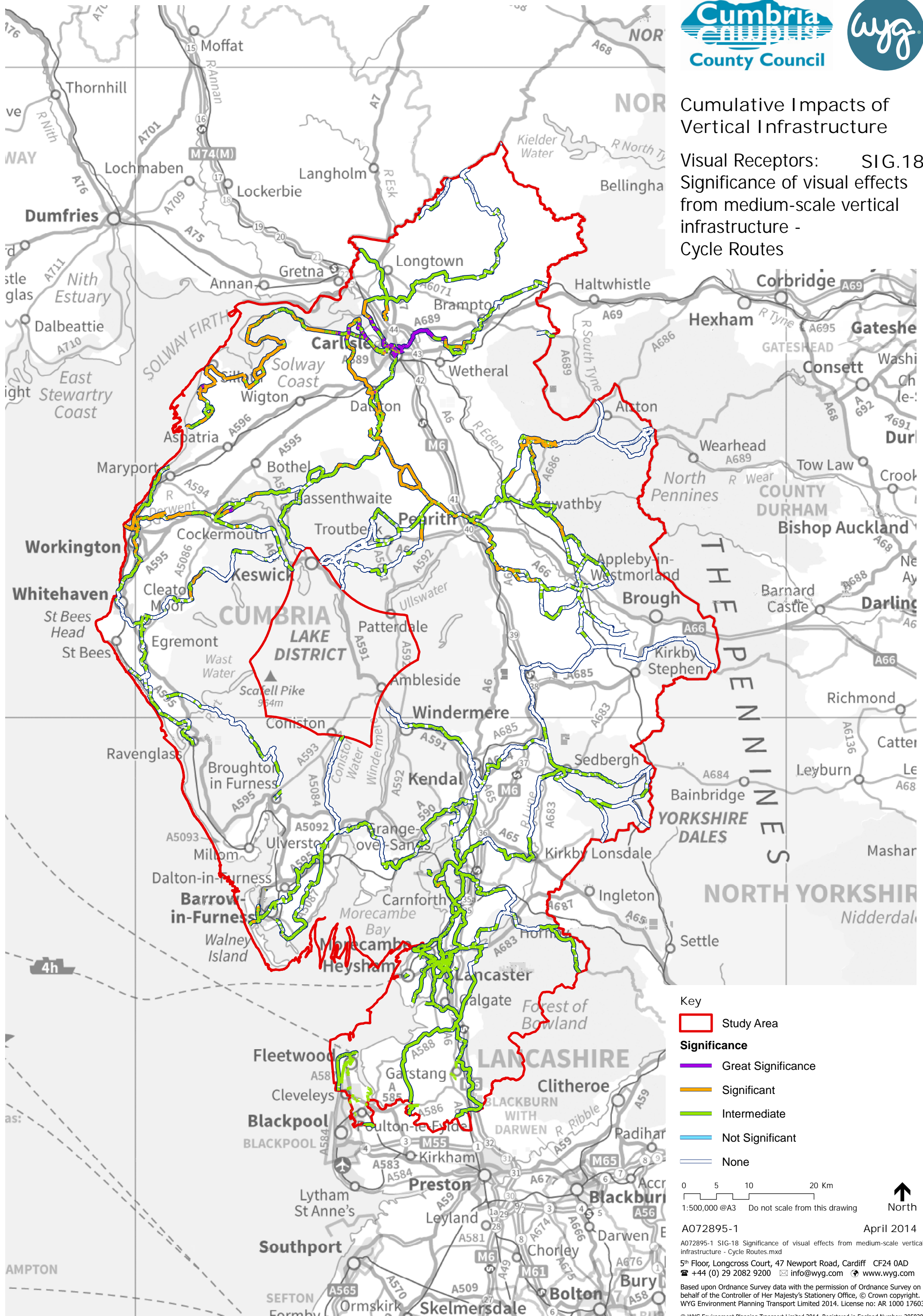
Significance
Great Significance
Significant
Intermediate
Not Significant
None

0 5 10 20 Km
1:500,000 @A3 Do not scale from this drawing



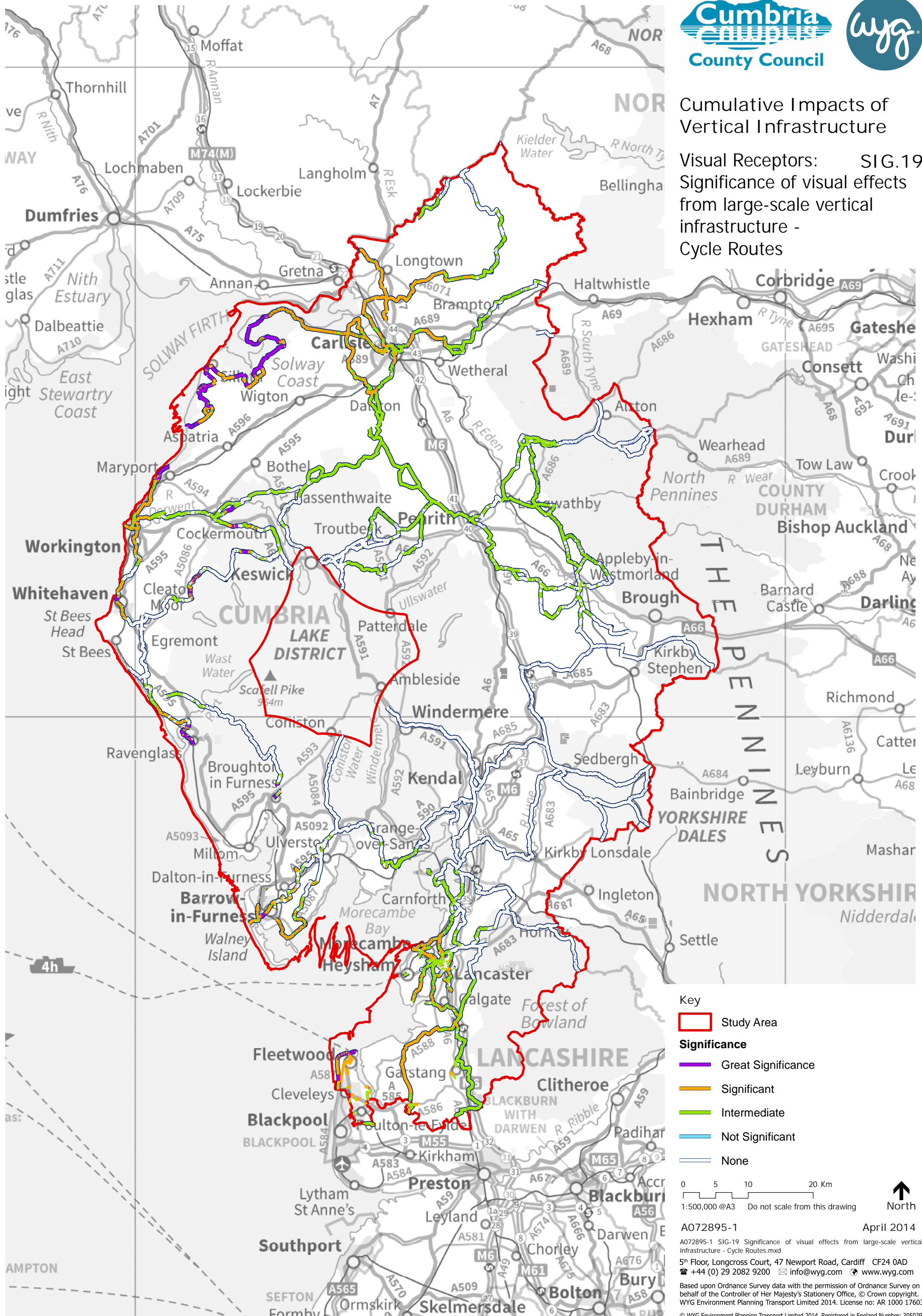
Cumulative Impacts of Vertical Infrastructure

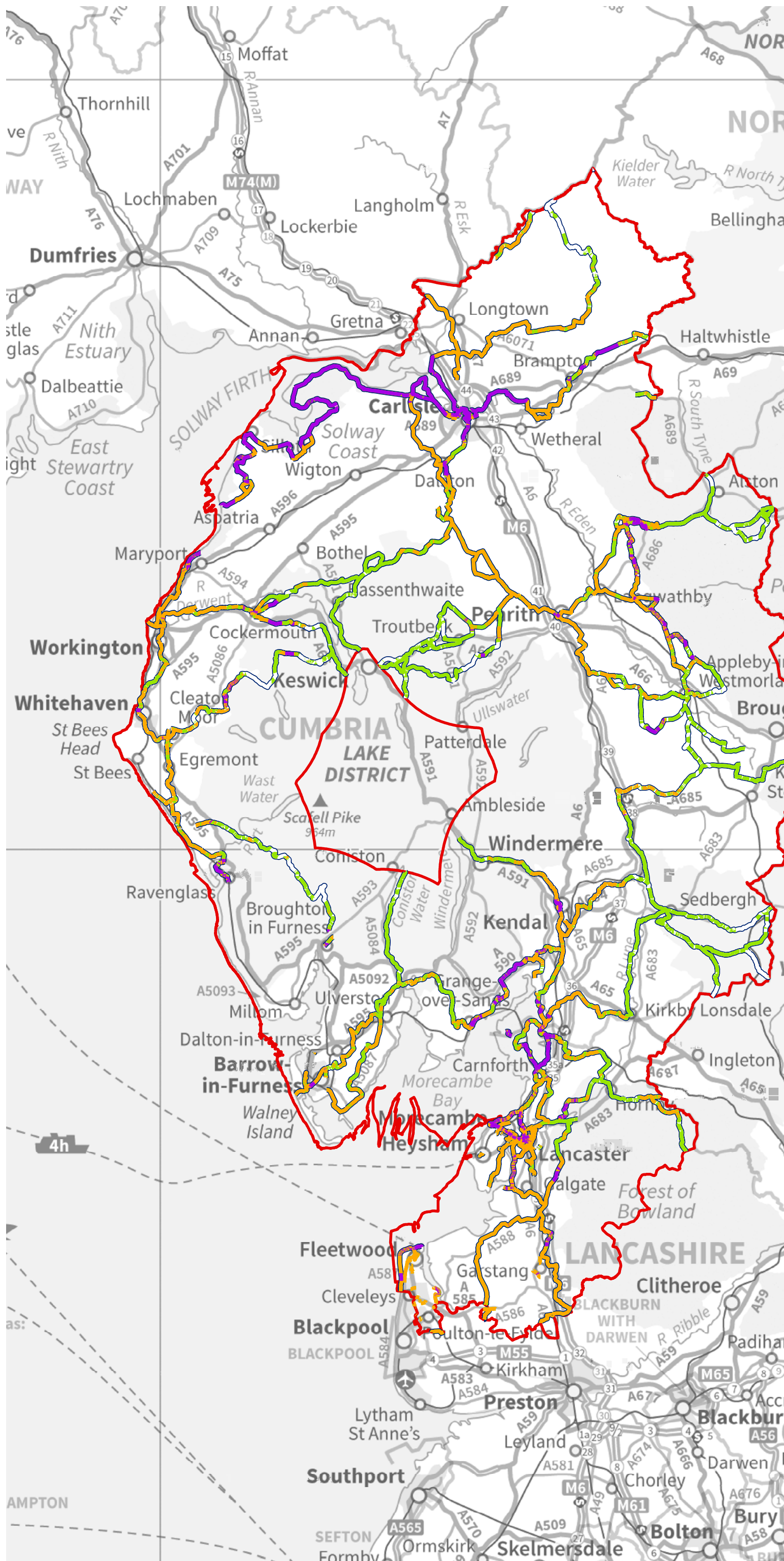
Visual Receptors: SIG.18
Significance of visual effects from medium-scale vertical infrastructure - Cycle Routes



Cumulative Impacts of Vertical Infrastructure

Visual Receptors: SIG.19
Significance of visual effects from large-scale vertical infrastructure - Cycle Routes





Cumulative Impacts of Vertical Infrastructure

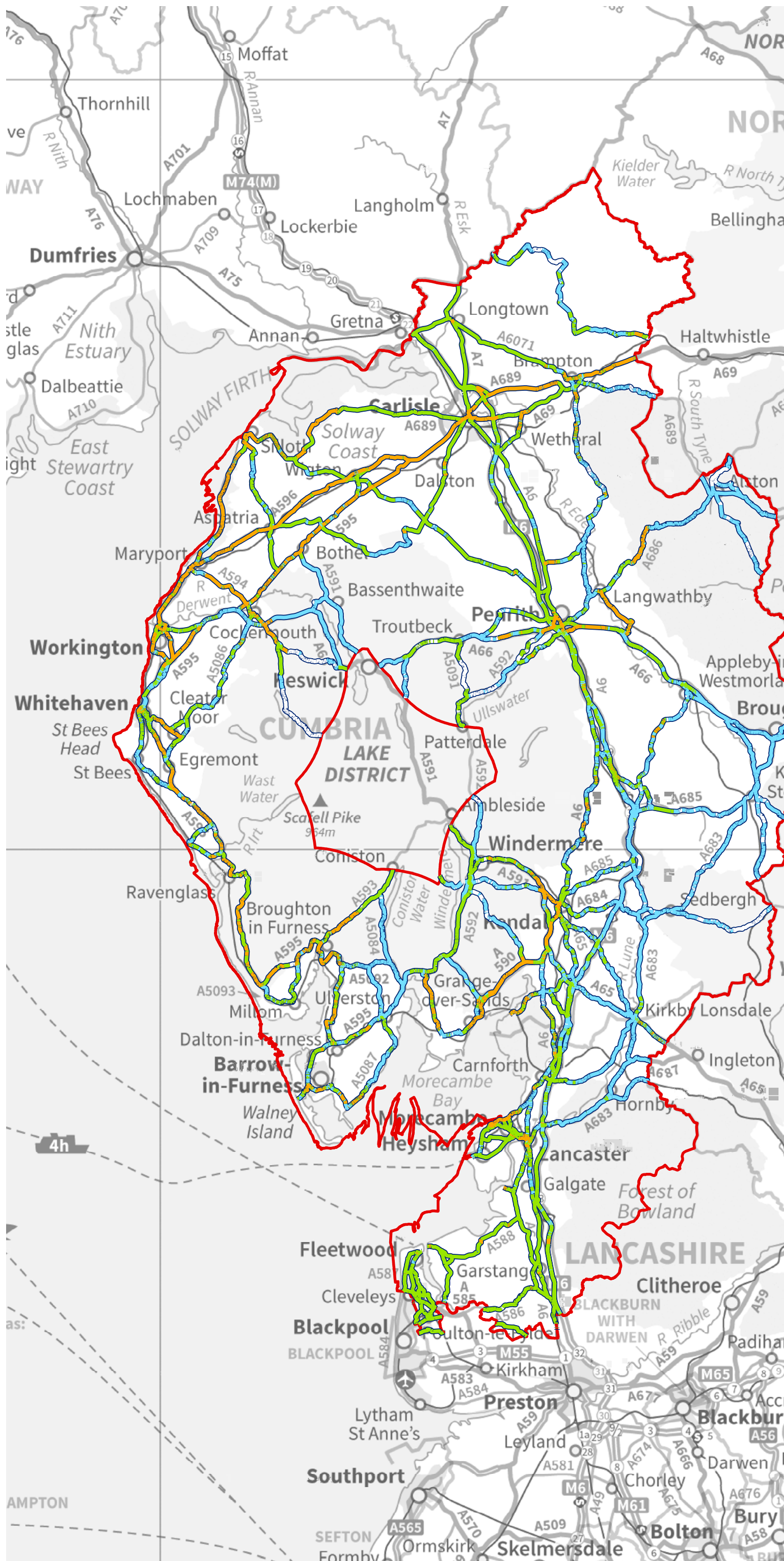
Visual Receptors: SIG.20
Significance of visual effects from all scales of vertical infrastructure - Cycle Routes

Key
Study Area

Significance
Great Significance
Significant
Intermediate
Not Significant
None

0 5 10 20 Km
1:500,000 @A3 Do not scale from this drawing





Cumulative Impacts of Vertical Infrastructure

Visual Receptors: SIG.21
Significance of visual effects from small-scale vertical infrastructure - Roads

Key

- Study Area
- Significance**
- Great Significance
- Significant
- Intermediate
- Not Significant
- None

0 5 10 20 Km
1:500,000 @A3 Do not scale from this drawing

North

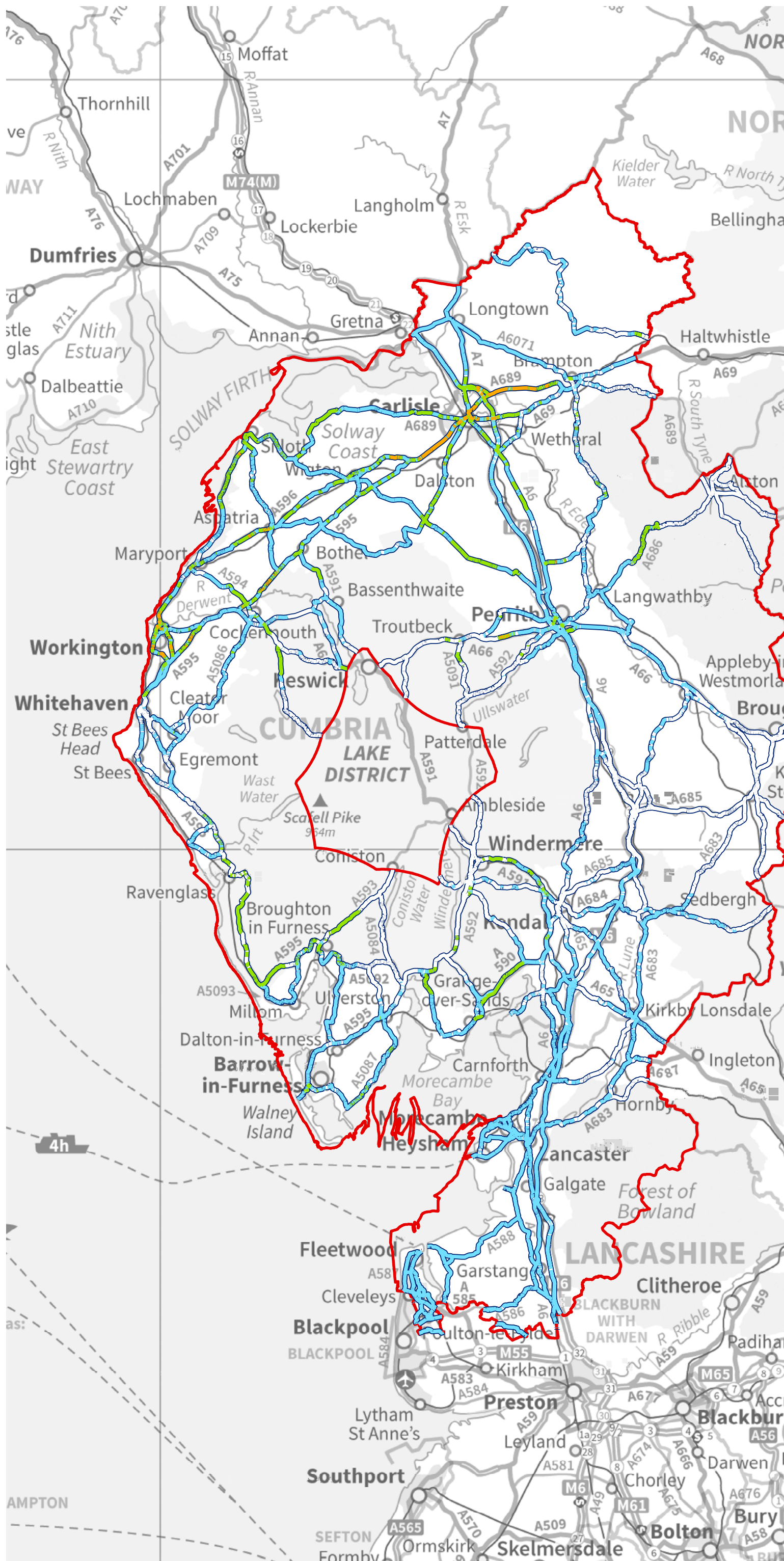
A072895-1 April 2014

A072895-1 SIG-21 Significance of visual effects from small-scale vertical infrastructure - Roads.mxd

5th Floor, Longcross Court, 47 Newport Road, Cardiff CF24 0AD
+44 (0) 29 2082 9200 info@wyg.com www.wyg.com

Based upon Ordnance Survey data with the permission of Ordnance Survey on behalf of the Controller of Her Majesty's Stationery Office, © Crown copyright. WYG Environment Planning Transport Limited 2014. License no: AR 1000 17603

© WYG Environment Planning Transport Limited 2014. Registered in England Number: 3050297



Cumulative Impacts of Vertical Infrastructure

Visual Receptors: SIG.22
Significance of visual effects from medium-scale vertical infrastructure - Roads

Key

- Study Area
- Significance**
- Great Significance
- Significant
- Intermediate
- Not Significant
- None

0 5 10 20 Km
1:500,000 @A3 Do not scale from this drawing

North

A072895-1 April 2014

A072895-1 SIG-22 Significance of visual effects from medium-scale vertical infrastructure - Roads.mxd

5th Floor, Longcross Court, 47 Newport Road, Cardiff CF24 0AD
+44 (0) 29 2082 9200 info@wyg.com www.wyg.com

Based upon Ordnance Survey data with the permission of Ordnance Survey on behalf of the Controller of Her Majesty's Stationery Office, © Crown copyright. WYG Environment Planning Transport Limited 2014. License no: AR 1000 17603

© WYG Environment Planning Transport Limited 2014. Registered in England Number: 3050297