



# Cleator Moor West

## Electoral Division Profile 2017

## Overview of Electoral Division

Cleator Moor West is an Electoral Division within the District of Copeland. It centres on the small market town of Cleator Moor and the local village of Cleator which were built around the former ironworks industry. The town has its own Town Council. Friday is market day held on the Square, it is still a weekly occurrence, although you will now usually only see a couple of traders. Cleator Moor has a small industrial estate and has a local business centre, which has attracted a number of larger employers to the area.

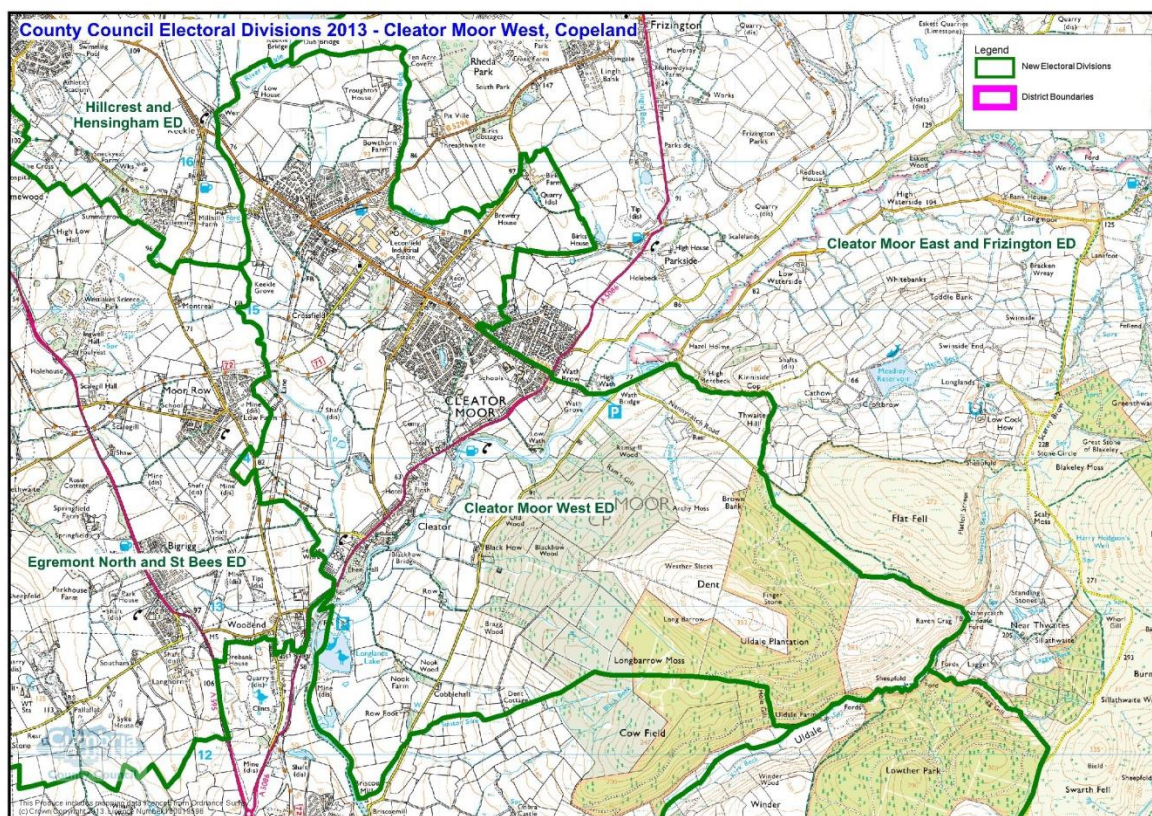
There are a couple of local primary schools within the division but people have to travel outside of the area to go to Secondary School; choices include Whitehaven and Egremont. There is also a University Technical College at Lillyhall. Further Education is provided at each of the schools sixth forms or alternatively Lakes College West Cumbria at Lillyhall, Workington.

The town is known for its sporting achievements; Celtic Football Club has produced players that have gone on to play for National Teams and for England, Wath Brow Hornets are a leading amateur rugby league team again producing national players. The Cricket Club has also won the National Village competition at Lords, London.

The town and neighbouring village of Cleator are overlooked by Dent Fell which is on the fringe of the National Park; Dent is the first fell that you encounter on the Wainwright Coast to Coast walk which passes through the division. The Sea to Sea (C2C) cycle network also passes through the division via the disused railway which is now part of the National Cycle Network.

South from Cleator, towards the local town of Egremont is Longlands Lake a local beauty spot and haven for wildlife, the lake is set in the former iron ore mine.

## Map



PDF copy available at <http://www.cumbria.gov.uk/Election2013/maps.asp>

## Communities

The area covers Cleator Moor Town and Cleator Village. Dent Fell is sparsely populated. Cleator Moor has a few distinct communities which have emerged as the town has grown such as Mill Hill, Bowthorn and Wath Brow.

## Statistical Profile

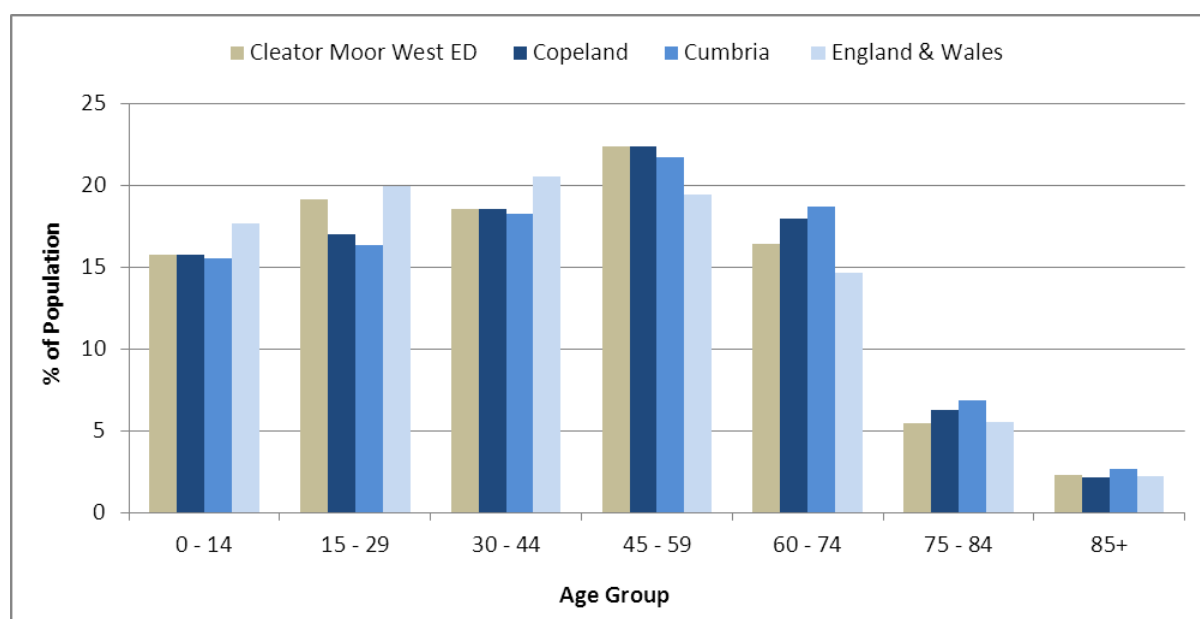
The 2011 Census estimated that the population of Cleator Moor West Electoral Division (ED) was 6062 persons.

The table below presents estimated numbers of residents in Cleator Moor West ED by age group:

	No. Persons by Age Group (Years)							
	All Ages	0 - 14	15 - 29	30 - 44	45 - 59	60 - 74	75 - 84	85+
<i>Cleator Moor West ED</i>	6062	955	1162	1124	1357	995	331	138

*Source: Office for National Statistics, 2011 Census*

The chart below compares the proportion of Cleator Moor West ED's population within each age group with the proportion of the population within each age group across Copeland district, Cumbria and England & Wales:



*Source: Office for National Statistics, 2011 Census*

County Council Electoral Divisions cover large spatial areas and so division averages can mask variation between communities within the division. Furthermore, beyond Census data, there is little statistical information available for Electoral Divisions. However, most statistical agencies produce data for Electoral Wards. Therefore, there is a very wide range of statistical information available for Electoral Wards. Furthermore, as Electoral Wards are generally smaller than Electoral

Divisions, statistics at this level provide more insight into variations between communities.

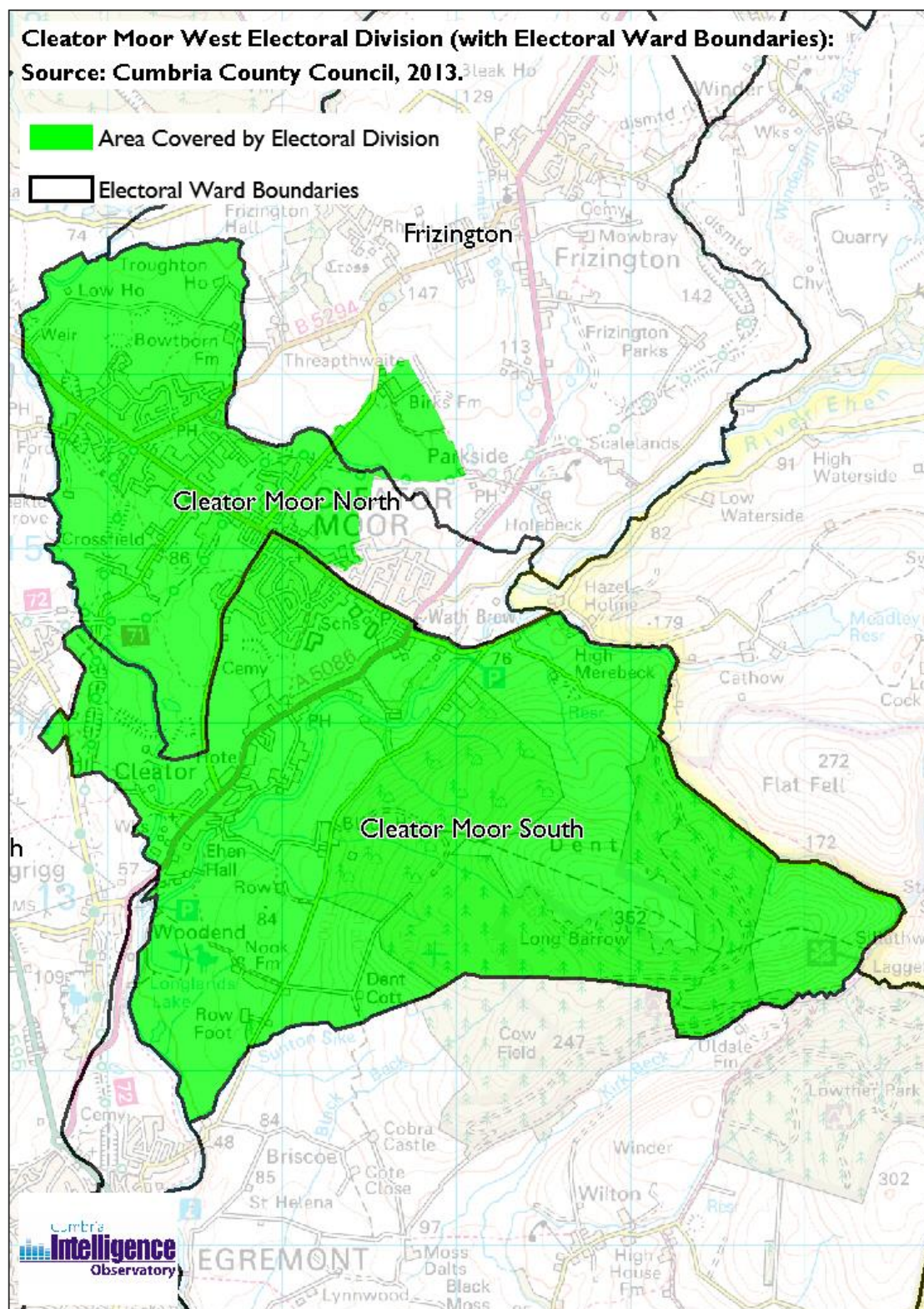
The table below identifies which Electoral Wards are fully or partially within the boundaries of Cleator Moor West ED, and what proportion of Cleator Moor West ED's population live within each ward:

Electoral Division	Wards in Electoral Division	% of Electoral Division's Population that fall within the Ward
Cleator Moor West ED	Cleator Moor North	52.3
Cleator Moor West ED	Cleator Moor South	47.6
Cleator Moor West ED	Frizington	0.1

*Source: Cumbria Intelligence Observatory, 2013*



The map below overlays Electoral Ward boundaries on to Cleator Moor West ED's boundary:



(c) Crown Copyright and Database Right, 2013 Ordnance Survey Licence Number 100019596

The Cumbria Intelligence Observatory presents many Electoral Ward level statistics via the interactive 'Cumbria Atlas' tool. The Statistics provided within the Cumbria Atlas cover topics such as, but not limited to, population, housing, health, economy, poverty, ethnicity, language, and transport. The datasets within the Cumbria Atlas are regularly updated and expanded.

For simple step by step instructions to use the Cumbria Atlas to explore statistics for the wards within your Electoral Division, please visit the following web page:

<http://www.cumbria.gov.uk/eLibrary/view.asp?ID=56017>

The Information and Intelligence Team within Cumbria County Council are happy to talk you through using the Cumbria Atlas over the phone, or face to face. Training sessions can also be arranged for small groups.

To contact the team please call 01228 226309, or email [info@cumbriaobservatory.org.uk](mailto:info@cumbriaobservatory.org.uk)

## **Parks, Open Spaces and Leisure Facilities**

- Longlands Lake
- Dent Fell and Nannycatch Valley
- The Bighill
- Play areas at Cleator and at Cleator Moor - Mill Hill, Jacktrees Road, Buckle Avenue, Prospect Row, New Houses, Cleator Football Fields
- Celtic Football ground – McGrath Park
- National Cycle Network known locally as the line or cycle track
- Former Ehenside playing fields
- Cleator Cricket Club – JD Memorial Ground
- Community Allotments

## **Active Community Organisations**

- Phoenix Youth Project
- Cleator Moor Credit Union
- Blue Skies
- Cleator Moor Brass
- Guides & Brownies (contact Alison Walton)
- Silver Liners Music Group
- Cleator Moor Scout Group
- Age UK
- U3A – University of the Third Age
- Exchange Corner Neighbourhood Watch

The following businesses have been set up within the area with a community/social focus:

- Home to Work & Skills 4 U  
(Social Enterprise)
- Phoenix Enterprise Centre & Rural Growth Hub  
(Community Interest Company)

## Key Communication Networks

### Whitehaven News

A weekly newspaper for the local area of Whitehaven produced by CN Group, distributed on a Thursday <http://www.whitehavennews.co.uk>

### News and Star

A daily evening newspaper for the local area of West Cumbria produced by CN Group <http://www.newsandstar.co.uk>

### Cleator Moor Today (CM2D) Newsletter

CM2D is a monthly publication provided by Egremont Today, it is provided in a paper format also <http://egremont2day.com/cm2d/>

### Cleator Moor Town Council

<http://www.cleatormoor-tc.org.uk/>

### Whitehaven Guide

Produced quarterly by the Guide Media Group

### BBC Radio Cumbria

Local radio station produced by the BBC for Cumbria

### CFM Radio

Local radio station produced by the Bauer Media Group, covering Cumbria and Southwest Scotland

### ITV News, Border region

Programme news, weather and information provided by ITV Broadcasting Limited for the England/Scotland border region, covering the majority of Cumbria, Dumfries and Galloway, the Scottish Borders and parts of Northumberland.

<http://www.itv.com/news/border/story/2013-10-11/get-in-touch/>

### BBC News – Look North (North East & Cumbria)

BBC's nightly regional news programme for the North East of England and Cumbria County Council <http://www.bbc.co.uk/programmes/b0070g1d/faq>



## Community Assets

- Surestart Childrens Centre, Howgill Centre
- GP Surgery, Fell View Health Care
- Town Hall
- Civic Hall
- Cleator Moor Library
- St Patricks School
- Montreal School
- Cleator Moor Nursery
- Cleator Moor Methodist Church
- St Marys Cleator
- St John Cleator Moor
- Crossfield Community Centre
- Community Allotments
- Cleator Moor Credit Union
- Columba Club
- Phoenix Enterprise Centre and Rural Growth Hub
- Phoenix Youth Club & Community Centre
- Bowling Centre
- The Bighill

## Local Cumbria County Council Service Hubs

Electoral Division	Cleator Moor West ED
LA Care Homes	1
Non LA Care Homes	2
Extra Care Housing	0
Primary Schools	2
Secondary Schools	0
Adult Education Centres	0
Childrens Centres	1
Family Centres	0
Cumbria Outdoors	0
Hospitals	0
Doctors Surgeries	2
Libraries	1
Book Drops	0

Archives Centres	0
Registration Offices	0
Local Links	1
Community Development Centres	1
Credit Unions	1
CCC Grant Funded or Directly Operated Swimming Pools	0
Highways Depots	0
Fleet Workshops	0
Waste Treatment Plants	0
Household Waste Recycling Centres	0
Fire Stations	0
<b>TOTAL</b>	<b>12</b>

## Community Engagement

Cumbria County Council's Local Committee for Copeland Grants Panel meets quarterly to consider grant applications from constituted non-profit making groups whose project benefits Copeland communities.

Issue based meetings are held in liaison with the local County Councillors to discuss community concerns.

### Key Community Contacts

#### Frank Morgan, Councillor, Cleator Moor West

- Address: 9 Distington Park, Distington, Cumbria, CA14 5UN
- Phone: 01946 830759
- Mobile: 07717 541082
- Email: [Frank.Morgan@cumbria.gov.uk](mailto:Frank.Morgan@cumbria.gov.uk)

#### Cumbria County Council, Copeland Development Team

- Address: Cleator Moor Library, Market Square, Cleator Moor, CA25 5AP
- Phone: 01946 505020
- Email: [gillian.elliott@cumbria.gov.uk](mailto:gillian.elliott@cumbria.gov.uk)
- Web: [www.cumbria.gov.uk](http://www.cumbria.gov.uk)

#### Cleator Moor Town Council

- Address: Cleator Moor Town Council, The Square, Cleator Moor, CA25 5AP
- Phone: 01946 810242

- Email: [cleatormoortowncouncil@btconnect.com](mailto:cleatormoortowncouncil@btconnect.com)
- Web: <http://www.cleatormoor-tc.org.uk>

**Copeland Borough Council**

- Address: Customer Services, The Market Hall, Market Place, Whitehaven, CA28 7JG
- Phone: 01946 598300
- Email: [info@copeland.gov.uk](mailto:info@copeland.gov.uk)
- Web: [www.copeland.gov.uk](http://www.copeland.gov.uk)