



# Mirehouse

## Electoral Division Profile 2017

## Overview of Electoral Division

Mirehouse is an electoral division within the district of Copeland. Named after the local housing estate of the same name, Mirehouse electoral division only covers the east side of Mirehouse and incorporates some of Hensingham and Whitehaven town. The west side of Mirehouse, which is separated by the railway line, is incorporated into the electoral division of Egremont and St Bees.

The main hospital for West Cumbria, the West Cumberland Hospital sits within the division. The hospital is a large employer for people within the division.

There are two primary schools in the division, but people have to travel outside of the division for secondary education, this is available at Whitehaven (Hensingham) or Egremont. Further education is provided by the schools 6th forms or at Lakes College West Cumbria, some 7 miles away.

The National Cycle Network (known locally as the cycle path) follows the railway line through Mirehouse, weaving in and out of either side. This cycle path is the first leg of the part of the long-distance C2C (Sea to Sea) route.

Whitehaven Town Council was formed in May 2015, before this Whitehaven hadn't had a "Town Council" since 1975. This Electoral Division is represented by two town councillors for Mirehouse ward.





## Communities

The electoral division covers a number of communities including:

- Mirehouse, incorporating:
  - Mirehouse East (known locally as the 06 side)
  - Mirehouse Shops
  - Snebra
- Corkickle, incorporating:
  - Front Corkickle
  - Back Corkickle
  - Corkickle Station
  - Inkerman Terrace
- Hensingham, incorporating:
  - Homewood
  - Rutland
  - Hensingham Square
  - Sneakyeat

## Statistical Profile

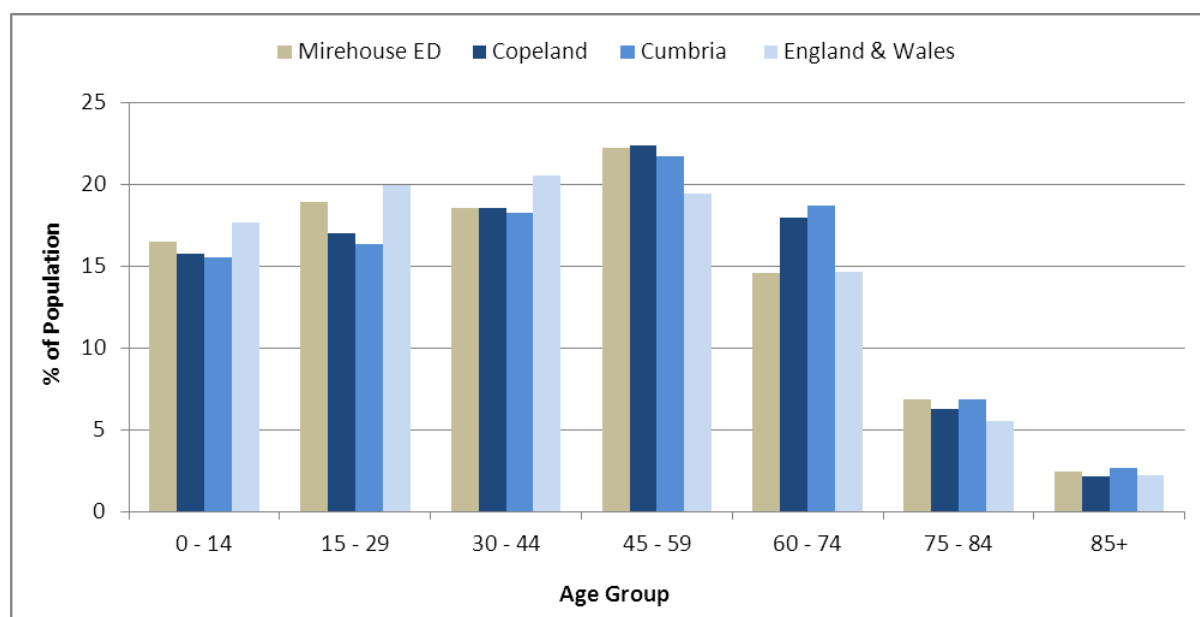
The 2011 Census estimated that the population of Mirehouse Electoral Division (ED) was **5991** persons.

The table below presents estimated numbers of residents in Mirehouse ED by age group:

	No. Persons by Age Group (Years)							
	All Ages	0 – 14	15 - 29	30 - 44	45 - 59	60 - 74	75 - 84	85+
<i>Mirehouse ED</i>	5991	987	1134	1110	1330	873	411	146

*Source: Office for National Statistics, 2011 Census*

The chart below compares the proportion of Mirehouse ED's population within each age group with the proportion of the population within each age group across Copeland district, Cumbria and England & Wales:



Source: Office for National Statistics, 2011 Census

County Council Electoral Divisions cover large spatial areas and so division averages can mask variation between communities within the division. Furthermore, beyond Census data, there is little statistical information available for Electoral Divisions. However, most statistical agencies produce data for Electoral Wards. Therefore, there is a very wide range of statistical information available for Electoral Wards. Furthermore, as Electoral Wards are generally smaller than Electoral Divisions, statistics at this level provide more insight into variations between communities.

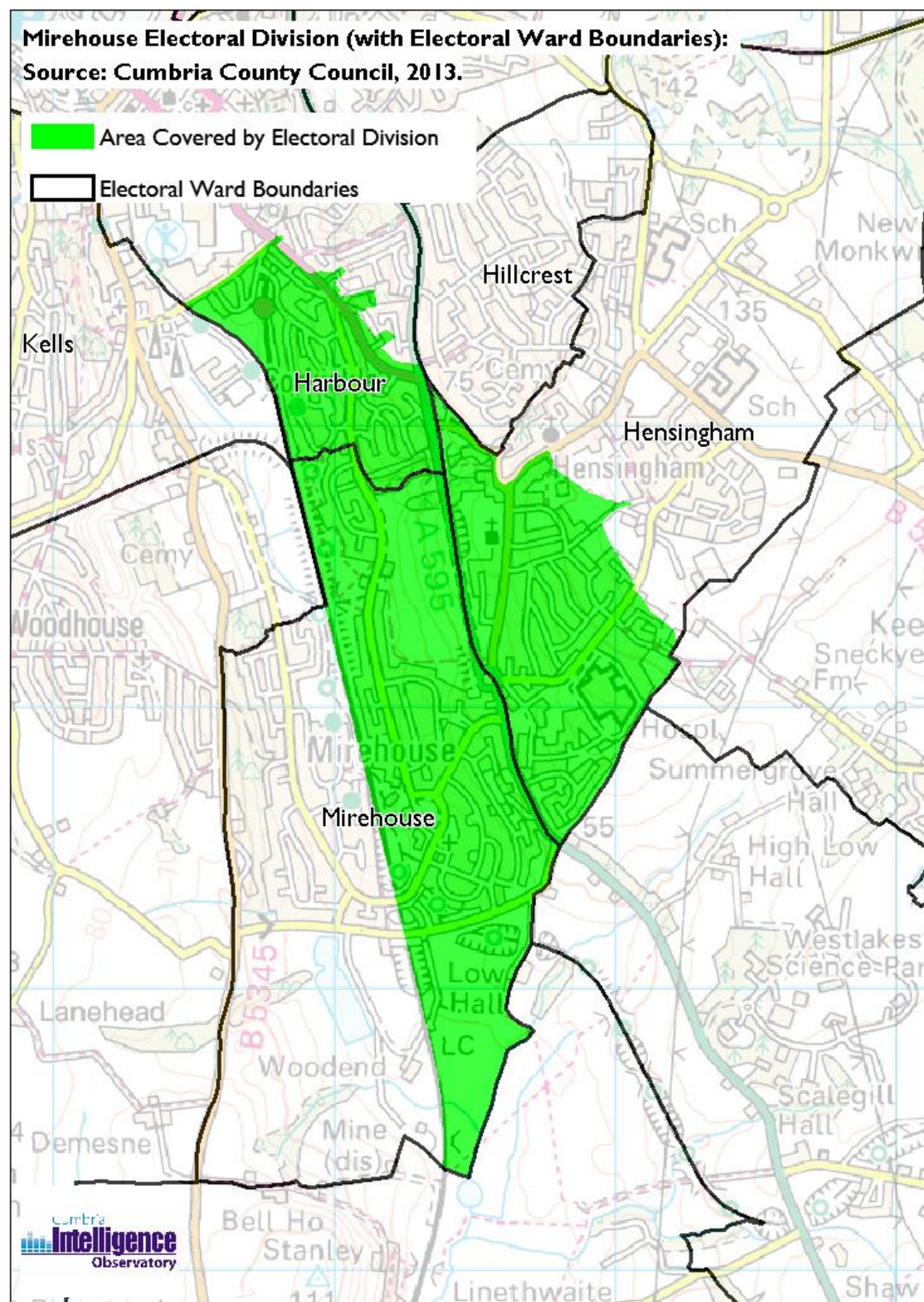
The table below identifies which Electoral Wards are fully or partially within the boundaries of Mirehouse ED, and what proportion of Mirehouse ED's population live within each ward:

Electoral Division	Wards in Electoral Division	% of Electoral Division's Population that fall within the Ward
Mirehouse ED	Harbour	26.4
Mirehouse ED	Hensingham	36.5
Mirehouse ED	Mirehouse	37.1

Source: Cumbria Intelligence Observatory, 2013



The map below overlays Electoral Ward boundaries on to Mirehouse ED's boundary:



(c) Crown Copyright and Database Right, 2013 Ordnance Survey Licence Number 100019596

The Cumbria Intelligence Observatory presents many Electoral Ward level statistics via the interactive 'Cumbria Atlas' tool. The Statistics provided within the Cumbria Atlas cover topics such as, but not limited to, population, housing, health, economy, poverty, ethnicity, language, and transport. The datasets within the Cumbria Atlas are regularly updated and expanded.

For simple step by step instructions to use the Cumbria Atlas to explore statistics for the wards within your Electoral Division, please visit the following web page:

<http://www.cumbria.gov.uk/eLibrary/view.asp?ID=56017>

The Information and Intelligence Team within Cumbria County Council are happy to talk you through using the Cumbria Atlas over the phone, or face to face. Training sessions can also be arranged for small groups.

To contact the team please call 01228 226309, or email

[info@cumbriaobservatory.org.uk](mailto:info@cumbriaobservatory.org.uk)

## **Parks, Open Spaces and Leisure Facilities**

There is a play area outside of Mirehouse shops with multi use games area (Muga), a small play area at Rutland and another in the school grounds at Valley Primary school.

The area has a number of open spaces including Snebra Beck/Gyhll; The Gardens beside Corkickle station and areas of the National Cycle Way/ Cycle path which comes through the middle of Mirehouse, winding between the East & West Side. Many of the streets have open areas in front of the houses.

## **Active Community Organisations**

- Mirehouse Residents Association
- West Cumberland Hospital Joint League of Friends
- Sneakyeat Allotment Association
- St Andrews Church
- St Andrews Fledglings (Carer & Toddler Group)
- St Benedict's Church
- Christians Against Poverty
- Mirehouse Matters

## Key Communication Networks

### Whitehaven News

A weekly broadsheet newspaper for the local area of Whitehaven produced by CN Group, distributed on a Thursday <http://www.whitehavennews.co.uk>

### News and Star

A daily evening newspaper for the local area of West Cumbria produced by CN Group <http://www.newsandstar.co.uk>

### Whitehaven Guide

Produced quarterly by the Guide Media Group

### BBC Radio Cumbria

Local radio station produced by the BBC for Cumbria

### CFM Radio

Local radio station produced by the Bauer Media Group, covering Cumbria and Southwest Scotland

### ITV News, Border region

Programme news, weather and information provided by ITV Broadcasting Limited for the England/Scotland border region, covering the majority of Cumbria, Dumfries and Galloway, the Scottish Borders and parts of Northumberland.

<http://www.itv.com/news/border/story/2013-10-11/get-in-touch/>

### BBC News – Look North (North East & Cumbria)

BBC's nightly regional news programme for the North East of England and Cumbria County Council <http://www.bbc.co.uk/programmes/b0070g1d/faq>

Church newsletters

School newsletters

## Community Assets

Schools:

- Valley Primary School and Nursery
- St Gregory's and St Patricks Catholic Community School

Churches:

- St Andrew's, Mirehouse
- St Benedict's, Mirehouse



- St Begh's Priory, Corkickle
- St John's Church, Hensingham

Other:

- West Cumberland Hospital
- Mirehouse Library
- Corkickle Railway Station
- Hensingham allotments
- Play area, Mirehouse Shops
- Kie Park, Hensingham
- National Cycle Network (cycle path)
- Sneakyeat Industrial Estate

Mirehouse community centre, whilst not within the electoral division of Mirehouse, the community centre is a great community resource and point of contact for residents of Mirehouse.

## Local Cumbria County Council Service Hubs

<b>Electoral Division</b>	<b>Mirehouse ED</b>
LA Care Homes	1
Non LA Care Homes	2
Extra Care Housing	0
Primary Schools	2
Secondary Schools	0
Adult Education Centres	0
Childrens Centres	0
Family Centres	0
Cumbria Outdoors	0
Hospitals	1
Doctors Surgeries	0
Libraries	1
Book Drops	0
Archives Centres	0
Registration Offices	1
Local Links	0
Community Development Centres	0
Credit Unions	0
CCC Grant Funded or Directly operated Swimming Pools	0
Highways Depots	0
Fleet Workshops	0

Waste Treatment Plants	0
Household Waste Recycling Centres	0
Fire Stations	0
TOTAL	8

## Community Engagement

Cumbria County Council's Local Committee for Copeland Grants Panel meets quarterly to consider grant applications from constituted non-profit making groups whose project benefits Copeland communities.

Issue based meetings are held in liaison with the local County Councillors to discuss community concerns.

### Key Community Contacts

#### Mike Hawkins, Councillor Mirehouse, Cumbria County Council

- **Address:** 60 Rutland Avenue Homewood, Whitehaven, Cumbria CA28 8LG
- **Phone:** 01946 65447
- **Mobile:** 07925 132549
- **Email:** [mike.hawkins@cumbria.gov.uk](mailto:mike.hawkins@cumbria.gov.uk)

#### Cumbria County Council, Copeland Development Team

- Address: Cleator Moor Library, Market Square, Cleator Moor, CA25 5AP
- Phone: 01946 505020
- Email: [gillian.elliott@cumbria.gov.uk](mailto:gillian.elliott@cumbria.gov.uk)
- Web: [www.cumbria.gov.uk](http://www.cumbria.gov.uk)

#### Copeland Borough Council

- Address: Customer Services, The Market Hall, Market Place, Whitehaven CA28 7JG
- Phone: 01946 598300
- Email: [info@copeland.gov.uk](mailto:info@copeland.gov.uk)
- Web: [www.copeland.gov.uk](http://www.copeland.gov.uk)

#### Whitehaven Town Council

- Address: The Civic Hall, Lowther Street, Whitehaven CA28 7SH
- Phone: 01946 67366
- Email: [Clerk@whitehaventowncouncil.co.uk](mailto:Clerk@whitehaventowncouncil.co.uk)
- Web: [www.whitehaventowncouncil.co.uk](http://www.whitehaventowncouncil.co.uk)

