



# Egremont North and St Bees

## Electoral Division Profile 2017

## Overview of Electoral Division

Egremont North & St Bees is an electoral division within the district of Copeland covering the villages of St Bees, Bigrigg, Moor Row and the west side of Mirehouse, Whitehaven. It also includes land and the coast line from just north of Coulderton, along to St Bees Head and around to Saltom Bay to meet up with the electoral division of Kells and Sandwith.

Bigrigg with a population of 1,200 people sits on the A595 leading from Whitehaven to Egremont, surrounded by farmland and watered by the River Ehen. Deep hollows in the area attest to iron ore mining as far back as medieval times.

Moor Row is a residential community of 400 homes, situated between Whitehaven and Egremont on Cumbria's coastal plain. The history of Moor Row goes back to at least 1762, but it was the 19<sup>th</sup> century discovery of iron ore in the vicinity that built the "row of houses on a moor". Cornish tin miners moved here to work the mines, and their presence is noted in a number of street names such as Penzance Street. Moor Row is on the route of the extremely popular Coast to Coast walk and Sustrans cycle path.

The village of St Bees is just south of St Bees Head, the most westerly point of Cumbria, 50 miles from the Scottish border. It's a small friendly community with a population of about 1,800. It has a history going back 1,000 years and has been a popular holiday destination for over 150 years. It's well known for the Norman Priory dating from 1120 dedicated to Saint Bega, for the 400 year old St Bees School and as the start of the Wainwright "Coast to Coast" Walk.

Westlakes Science and Technology Park and the recently renovated Summergrove Halls sits within the division. Also the nuclear power plant Sellafield is a few miles away which also offers local employment.

There are two primary schools in the division, but people have to travel outside of the division for mainstream secondary education, this is available at Whitehaven (Hensingham), Egremont or the University Technical College (UTC) at Lillyhall. Further education is provided by the schools sixth forms or at Lakes College West Cumbria, some 7 miles away.

The National Cycle Network follows the disused railway line through Mirehouse and Moor Row. This cycle path is the first leg of the long-distance C2C (Sea to Sea) route.

Map









<http://www.cumbria.gov.uk/Election2013/maps.asp> >

## Communities

The electoral division comprises of a number of villages and hamlets together with the west side of Mirehouse Housing Estate:

- Bigrigg
- Moor Row
- Rottington
- St Bees
- Summergrove
- Woodend

## Statistical Profile

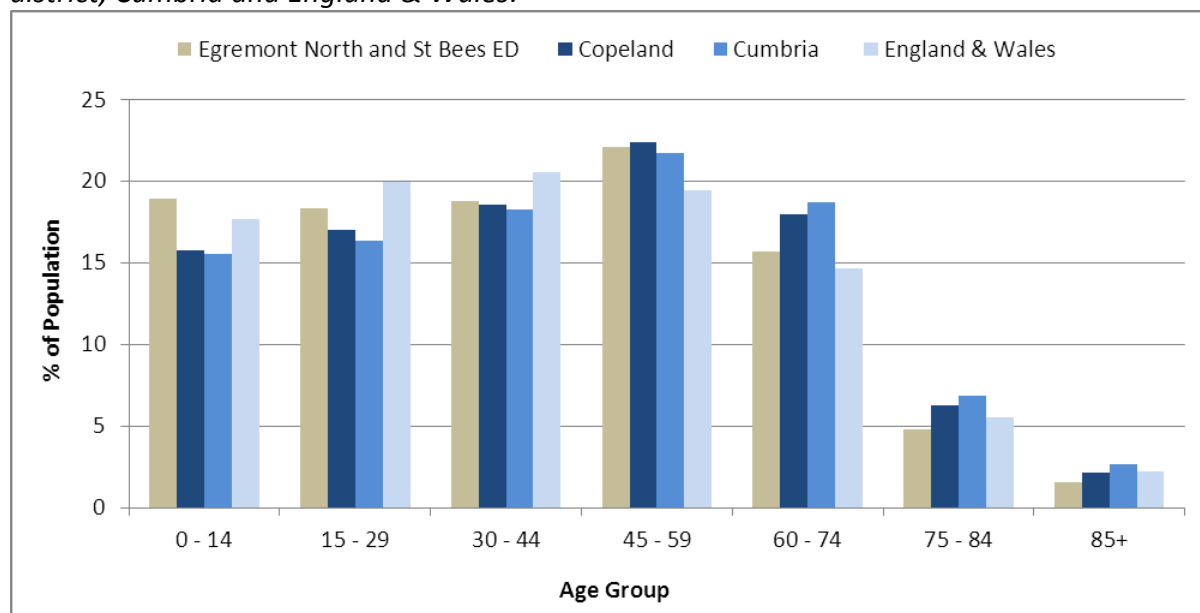
The 2011 Census estimated that the population of **Egremont North and St Bees Electoral Division (ED)** was **5968** persons.

The table below presents estimated numbers of residents in **Egremont North and St Bees ED** by age group:

	No. Persons by Age Group (Years)							
	All Ages	0 - 14	15 - 29	30 - 44	45 - 59	60 - 74	75 - 84	85+
<i>Egremont North and St Bees ED</i>	5968	1128	1092	1118	1316	936	286	92

Source: Office for National Statistics, 2011 Census

The chart below compares the proportion of **Egremont North and St Bees ED's** population within each age group with the proportion of the population within each age group across Copeland district, Cumbria and England & Wales:



Source: Office for National Statistics, 2011 Census

County Council Electoral Divisions cover large spatial areas and so division averages can mask variation between communities within the division. Furthermore, beyond Census data, there is little statistical information available for Electoral Divisions. However, most statistical agencies

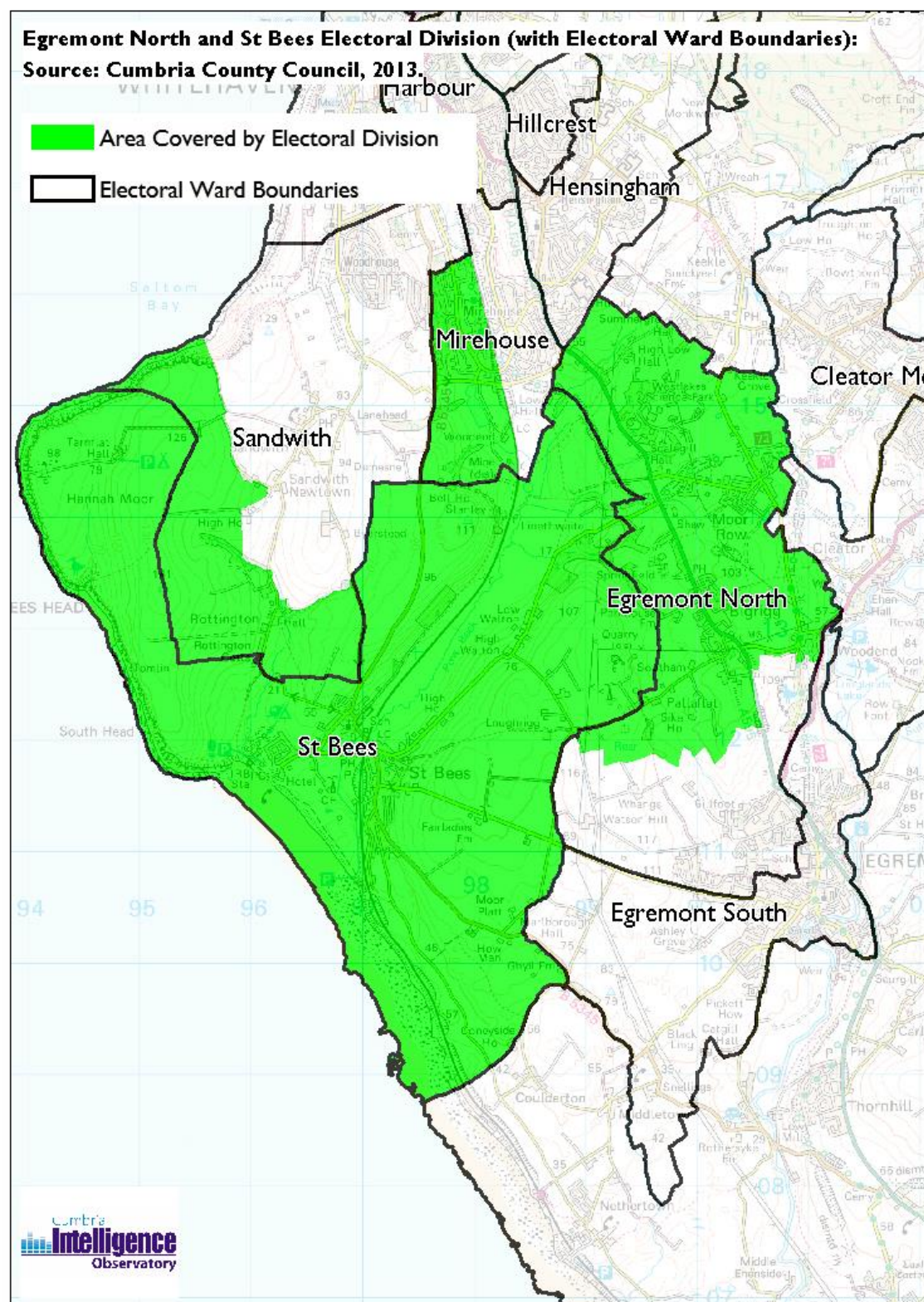
*produce data for Electoral Wards. Therefore, there is a very wide range of statistical information available for Electoral Wards. Furthermore, as Electoral Wards are generally smaller than Electoral Divisions, statistics at this level provide more insight into variations between communities. The table below identifies which Electoral Wards are fully or partially within the boundaries of **Egremont North and St Bees ED**, and what proportion of **Egremont North and St Bees ED's** population live within each ward:*

Electoral Division	Wards in Electoral Division	% of Electoral Division's Population that fall within the Ward
Egremont North and St Bees ED	Egremont North	31.3
Egremont North and St Bees ED	Mirehouse	38.5
Egremont North and St Bees ED	Sandwith	1.1
Egremont North and St Bees ED	St Bees	29.1

*Source: Cumbria Intelligence Observatory, 2013*



The map below overlays Electoral Ward boundaries on to **Egremont North and St Bees ED's** boundary:



(c) Crown Copyright and Database Right, 2013 Ordnance Survey Licence Number 100019596



The Cumbria Intelligence Observatory presents many Electoral Ward level statistics via the interactive 'Cumbria Atlas' tool. The Statistics provided within the Cumbria Atlas cover topics such as, but not limited to, population, housing, health, economy, poverty, ethnicity, language, and transport. The datasets within the Cumbria Atlas are regularly updated and expanded.

For simple step by step instructions to use the Cumbria Atlas to explore statistics for the wards within your Electoral Division, please visit the following web page:

<http://www.cumbria.gov.uk/eLibrary/view.asp?ID=56017>

The Information and Intelligence Team within Cumbria County Council are happy to talk you through using the Cumbria Atlas over the phone, or face to face. Training sessions can also be arranged for small groups.

To contact the team please call 01228 226309, or email [info@cumbriaobservatory.org.uk](mailto:info@cumbriaobservatory.org.uk)

## Parks, Open Spaces and Leisure Facilities

This area has a large expanse of open space and farming land along the coast line.

- **Bigrigg** Playing Fields
- **Mirehouse** Football fields
- **Moor Row**
  - Play Area
  - Playing fields
- **National Cycle Way**/Cycle path
- **St Bees**
  - Adams Recreation Ground
  - St Bees Beach
  - St Bees Beach Play Area
  - St Bees Golf Club
  - St Bees Swimming Pool & Sports Hall (Independent School)
  - St Bees Village School playground and playing fields

## Active Community Organisations

### Bigrigg

Brownies  
Guides  
WI  
Over 60s Circle

### St Bees

Area Visitors	Mummers
Arts Society	Overs 60s Club
Beavers	Parish Council

Bell Ringing  
Brownies  
Church Choir  
Cubs & Scouts  
Explorers Group  
Freemasons  
Friends of the Priory  
Garden Society  
Guides  
Local History

Parochial Church Council  
Prayer Group  
Priory Singers  
Royal National Lifeboat Institution  
Royal Society for the Protection of Birds  
St Bees First Responders  
St Bees Triers  
Sunday School  
Toddler Group  
Village Hall Committee  
Village in Bloom Committee  
Village School Association

#### **Moor Row**

- Working Men's Club
- Jubilee Club
- Phoenix Youth Project
- Emmanuel House church

#### **Mirehouse West**

- Mirehouse Residents Group
- Seathwaite Community Centre
- Mirehouse AFC

### **Key Communication Networks**

#### **Whitehaven News**

A weekly broadsheet newspaper for the local area of Whitehaven produced by CN Group, distributed on a Thursday <http://www.whitehavennews.co.uk>

#### **News and Star**

A daily evening newspaper for the local area of West Cumbria produced by CN Group  
<http://www.newsandstar.co.uk>

#### **St Bees News/Parish Magazine**

A monthly publication circulated to all households in St Bees, provided in a paper format also <http://stbeesorg.uk/magazine/index.html>

St Bees Village Website – [www.stbees.org.uk](http://www.stbees.org.uk)

St Bees Priory Website – [www.stbeespriory.org](http://www.stbeespriory.org)

#### Egremont Today (Egremont2Day) Newsletter

A monthly publication issued by Egremont Today, it is provided in a paper format also <http://egremont2day.com>

#### Mirehouse Community Centre

The community centre is a great community resource and point of contact for residents of Mirehouse.

#### Whitehaven Guide

Produced quarterly by the Guide Media Group

#### BBC Radio Cumbria

Local radio station produced by the BBC for Cumbria

#### CFM Radio

Local radio station produced by the Bauer Media Group, covering Cumbria and Southwest Scotland

#### ITV News, Border region

Programme news, weather and information provided by ITV Broadcasting Limited for the England/Scotland border region, covering the majority of Cumbria, Dumfries and Galloway, the Scottish Borders and parts of Northumberland.

<http://www.itv.com/news/border/story/2013-10-11/get-in-touch/>

#### BBC News – Look North (North East & Cumbria)

BBC's nightly regional news programme for the North East of England and Cumbria County Council <http://www.bbc.co.uk/programmes/b0070g1d/faq>

Each of the local schools provides regular newsletters for parents and carers.

[www.stbeesvillage.cumbria.sch.uk](http://www.stbeesvillage.cumbria.sch.uk)

[www.st-bees-school.org](http://www.st-bees-school.org)

[www.moor-row.cumbria.sch.uk](http://www.moor-row.cumbria.sch.uk)

## Community Assets

- **Bigrigg**
  - Village Hall
  - St John's Church
- **Mirehouse**
  - Mirehouse Community Centre
  - Mirehouse AFC
- **Moor Row**
  - Working Men's Club
  - Emmanuel House church



- Community Primary & Nursery School
  - **National Cycle Way/Cycle path**
  - **St Bees**
    - Adams Recreation Ground ;
    - Hartley's Beach Shop & Café;
    - Methodist Chapel;
    - New College Hall;
    - Old College Hall;
    - Post Office;
    - Priory Church;
    - Public Toilets.
- Railway Station;  
Seacote Park Caravan Site;  
Village Hall/Hodgett's Club;

## Local Cumbria County Council Service Hubs

Electoral Division	Egremont North and St Bees ED
LA Care Homes	0
Non LA Care Homes	1
Extra Care Housing	0
Primary Schools	2
Secondary Schools	0
Adult Education Centres	0
Childrens Centres	0
Family Centres	0
Cumbria Outdoors	0
Hospitals	0
Doctors Surgeries	0
Libraries	0
Book Drops	0
Archives Centres	0
Registration Offices	0
Local Links	0
Community Development Centres	0
Credit Unions	0
CCC Grant Funded or Directly Operated Swimming Pools	0
Highways Depots	0
Fleet Workshops	0
Waste Treatment Plants	0
Household Waste Recycling Centres	0
Fire Stations	0

TOTAL

3

## Community Engagement

Cumbria County Council's Local Committee for Copeland Grants Panel meets quarterly to consider grant applications from constituted non-profit making groups whose project benefits Copeland communities.

Issue based meetings are held in liaison with the local County Councillors to discuss community concerns.

### Key Community Contacts

**Chris Whiteside, County Councillor for Egremont North & St Bees**

- **Address:** Hawthorn House, Foxhouses Road, Whitehaven, Cumbria, CA28 8AF
- **Mob:** 07798 667678
- **Email:** [chris.whiteside@cumbria.gov.uk](mailto:chris.whiteside@cumbria.gov.uk)

**Cumbria County Council, Copeland Development Team**

Address: Cleator Moor Library, Market Square, Cleator Moor, CA25 5AP

Tel: 01946 505020

Email: [gillian.elliott@cumbria.gov.uk](mailto:gillian.elliott@cumbria.gov.uk)

**Copeland Borough Council**

Address: Customer Services, The Market Hall, Market Place, Whitehaven, CA28 7JG

Tel: 01946 598300

Email: [info@copeland.gov.uk](mailto:info@copeland.gov.uk)

Web: [www.copeland.gov.uk](http://www.copeland.gov.uk)

**St Bees Parish Council**

Clerk: Mrs J Donaldson

Address: East House, Coulderton, Egremont, CA22 2UR

Tel: 01946 822560

Email: [pc.clerk@stbees.org.uk](mailto:pc.clerk@stbees.org.uk)

**Lowside Quarter Parish Council**

Clerk: Ms Y Hey

Address: Seatalan, Station Lane, Nethertown, CA22 2UH

Tel: 01946 825637

Email: [simon.hey1@btinternet.com](mailto:simon.hey1@btinternet.com)

Web: [www.Lowsidequarterpc.co.uk](http://www.Lowsidequarterpc.co.uk)

**Egremont Town Council**

Clerk: Mrs G Pritchard

Address: Market Hall Offices, Market Street, Egremont, CA22 2BY

Tel: 01946 820254

Email: [egremontmarkethall@outlook.com](mailto:egremontmarkethall@outlook.com)

Web: [www.egremonttowncouncil.co.uk](http://www.egremonttowncouncil.co.uk)

**Whitehaven Town Council**

Clerk: Mrs M Jewell

Address: The Civic Hall, Lowther Street, Whitehaven, CA28 7SH

Tel: 01946 67366

Email: [Clerk@whitehaventowncouncil.co.uk](mailto:Clerk@whitehaventowncouncil.co.uk)

Web: [www.whitehaventowncouncil.co.uk](http://www.whitehaventowncouncil.co.uk)