

Egremont

Electoral Division Profile 2017

Overview of Electoral Division

Egremont is a fair trade market town within the district of Copeland, five miles south of Whitehaven on the River Ehen. The town which lies at the foot of Uldale Valley and Dent Fell has a long industrial heritage including dyeing, weaving and iron ore mining. Egremont has its own Town Council.

The town's layout today is much the same as at the time of Richard de Lucy around 1200 with its wide Main Street opening out into the market place. The remains of the Norman castle, built in the 12th century, are situated at the southern end of Main Street near the market place.

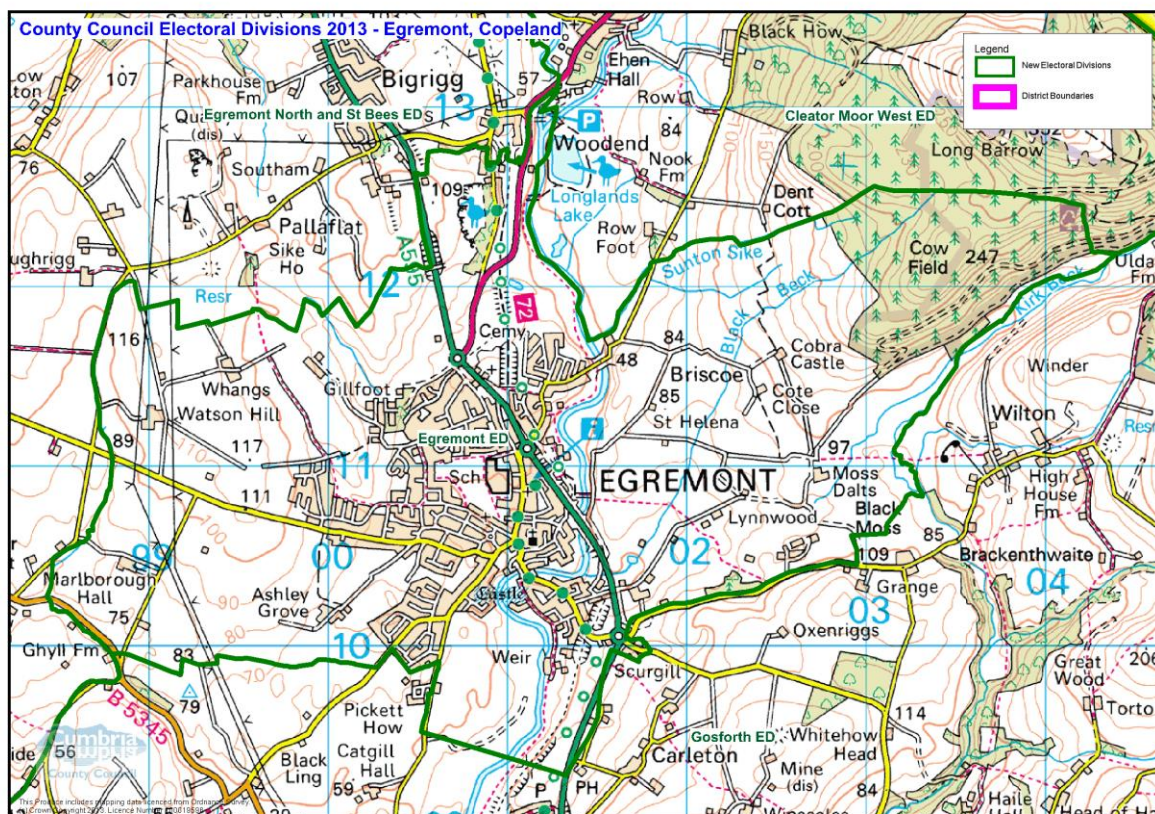
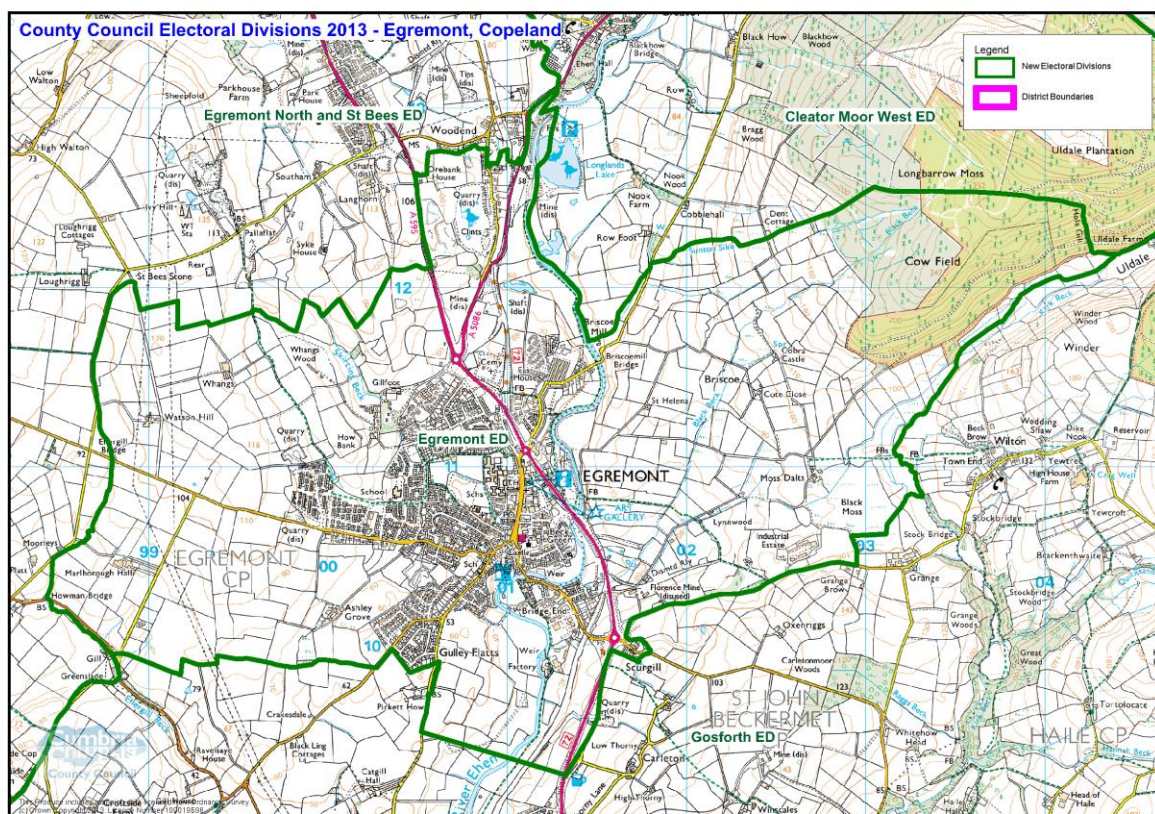
Egremont was granted a charter for a market and annual fair by King Henry III in 1266. The resulting annual Crab Fair now hosts the World Gurning Championships.

Egremont's Florence Mine was until 2008 the last working deep iron ore mine left in Western Europe and produced ore, products for the cosmetics industry and high quality haematite for jewellery. The Mine has now been renovated and re-opened as an Art Centre.

The town has three primary schools and one secondary school namely West Lakes Academy which provides education up to Sixth Form. The town has its own climbing wall, library, fire station, a large market hall and a cemetery.

The largest employer in the area is the nuclear industry/Sellafield Ltd based at Seascale and there is the Bridge End Industrial Estate which is approximately one mile from Egremont town centre. The A595 is within close proximity and provides access north and south of Copeland.

Map



More maps can be found at <http://www.cumbria.gov.uk/Election2013/maps.asp>

Communities

Bookwell

Briscoe

Orgill

Smithfield

Statistical Profile

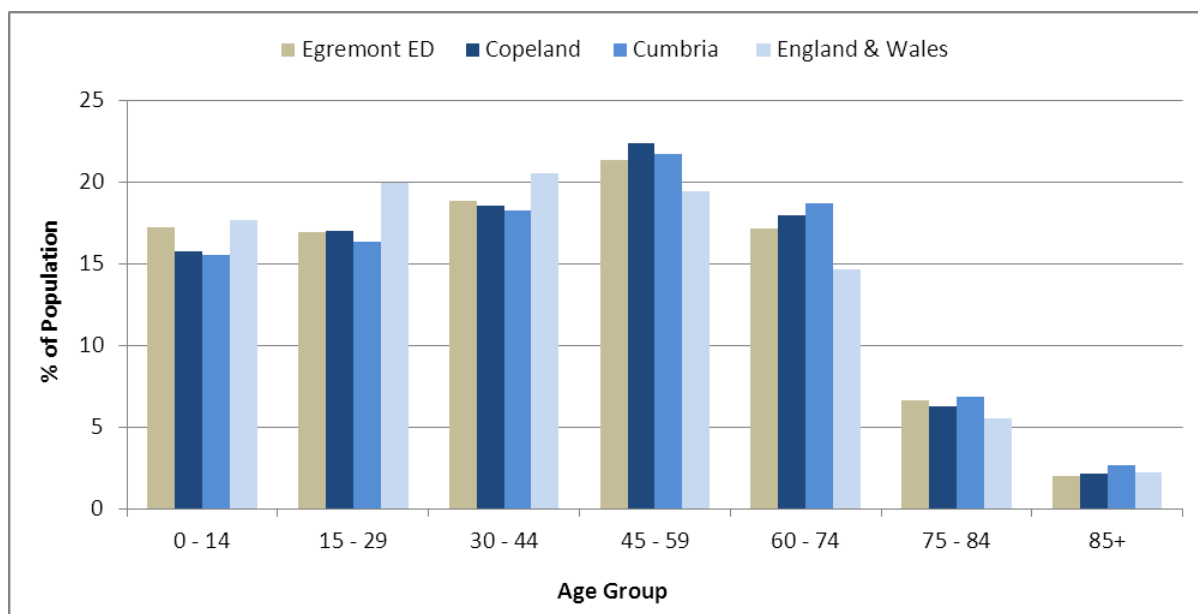
The 2011 Census estimated that the population of **Egremont Electoral Division (ED)** was **6222** persons.

The table below presents estimated numbers of residents in **Egremont ED** by age group:

	No. Persons by Age Group (Years)							
	All Ages	0 - 14	15 - 29	30 - 44	45 - 59	60 - 74	75 - 84	85+
Egremont ED	6222	1071	1052	1172	1327	1067	411	122

Source: Office for National Statistics, 2011 Census

The chart below compares the proportion of **Egremont ED's** population within each age group with the proportion of the population within each age group across Copeland district, Cumbria and England & Wales:



Source: Office for National Statistics, 2011 Census

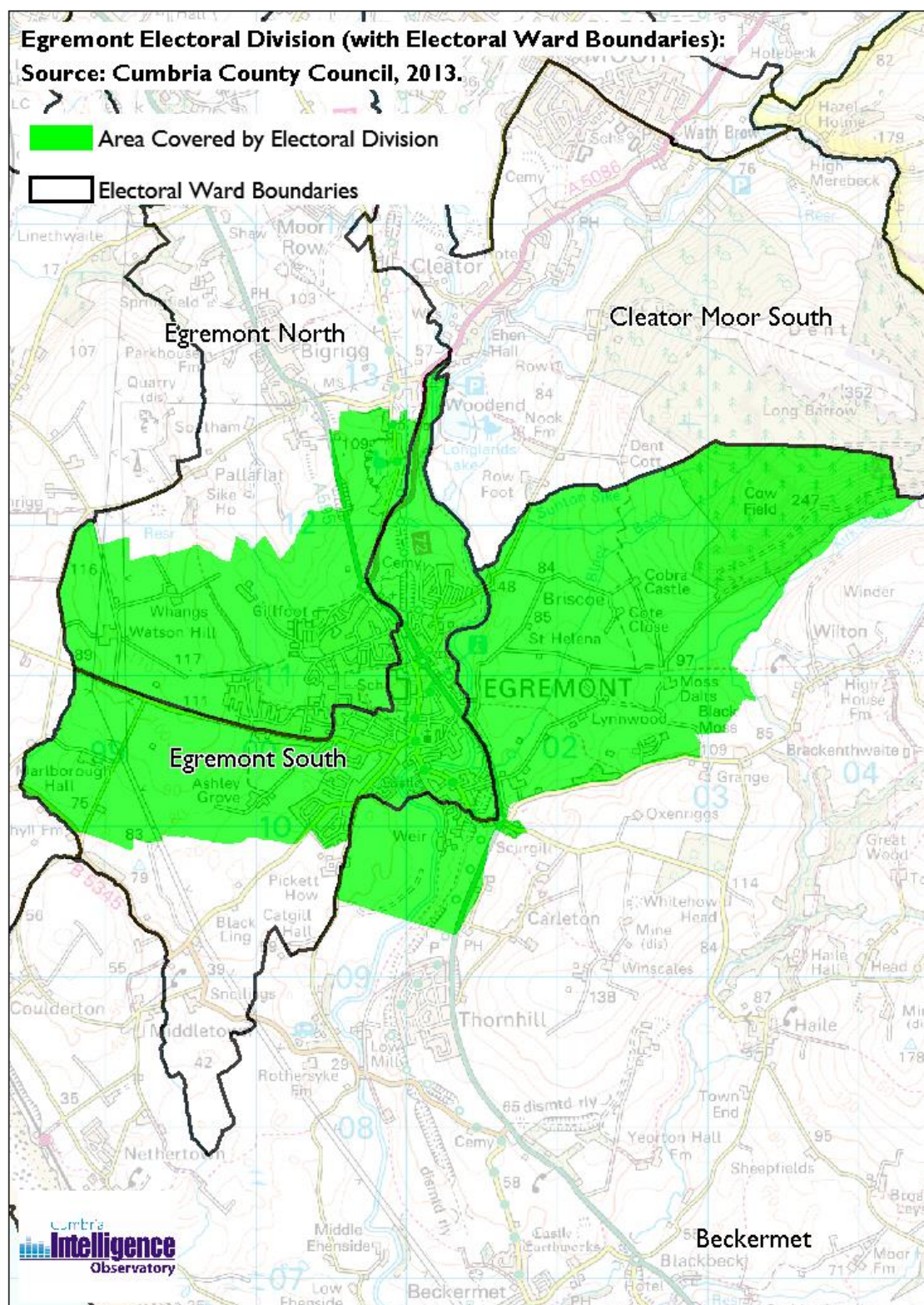
County Council Electoral Divisions cover large spatial areas and so division averages can mask variation between communities within the division. Furthermore, beyond Census data, there is little statistical information available for Electoral Divisions. However, most statistical agencies produce data for Electoral Wards. Therefore, there is a very wide range of statistical information available for Electoral Wards. Furthermore, as Electoral Wards are generally smaller than Electoral Divisions, statistics at this level provide more insight into variations between communities.

The table below identifies which Electoral Wards are fully or partially within the boundaries of **Egremont ED**, and what proportion of **Egremont ED**'s population live within each ward:

Electoral Division	Wards in Electoral Division	% of Electoral Division's Population that fall within the Ward
Egremont ED	Beckermest	2.0
Egremont ED	Egremont North	40.0
Egremont ED	Egremont South	58.1

Source: Cumbria Intelligence Observatory, 2013

The map below overlays Electoral Ward boundaries on to **Egremont ED's** boundary:



(c) Crown Copyright and Database Right, 2013 Ordnance Survey Licence Number 100019596

The Cumbria Intelligence Observatory presents many Electoral Ward level statistics via the interactive 'Cumbria Atlas' tool. The Statistics provided within the Cumbria Atlas cover topics such as, but not limited to, population, housing, health, economy, poverty, ethnicity, language, and transport. The datasets within the Cumbria Atlas are regularly updated and expanded.

For simple step by step instructions to use the Cumbria Atlas to explore statistics for the wards within your Electoral Division, please visit the following web page:

<http://www.cumbria.gov.uk/eLibrary/view.asp?ID=56017>

The Information and Intelligence Team within Cumbria County Council are happy to talk you through using the Cumbria Atlas over the phone, or face to face. Training sessions can also be arranged for small groups.

To contact the team please call 01228 226309, or email info@cumbriaobservatory.org.uk

Parks, Open Spaces and Leisure Facilities

- Brisco Mount Allotment
- Egremont ARLFC
- Egremont Bowls Club
- Egremont Castle & Park
- Egremont Community Orchard
- Egremont Climbing Wall
- Egremont Cricket Club
- Egremont Rugby Union Club
- Orgill Sports pitches
- Play areas at:
 - Egremont Skate Park
 - Ling Road
 - Queensgate
 - Whitegate
- SASRA Falcon Club

Active Community Organisations

- De Lucy Centre – Age UK
- Egremont Amenity Committee
- Egremont & Area Regeneration Partnership
- Egremont Crab Fair Committee
- Egremont Fairtrade and Local Campaign Group
- Egremont Flood Action Group
- Egremont Rangers ARLFC
- Egremont Rugby Union
- Egremont Town Council
- Egremont Town Band
- Egremont Youth Partnership
- 1st Egremont Guides
- Friends of Egremont Castle
- Lowes Court Gallery Association
- Memory Lane Group
- Orgill & Castle Croft Residents and Tenants Group
- Smithfield & Longcroft Tenants & Residents Association
- Whitehaven & Egremont District Credit Union

Key Communication Networks

Whitehaven News

A weekly broadsheet newspaper for the local area of Whitehaven produced by CN Group, distributed on a Thursday <http://www.whitehavennews.co.uk>

News and Star

A daily evening newspaper for the local area of West Cumbria produced by CN Group <http://www.newsandstar.co.uk>

Egremont Today (Egremont2Day) Newsletter

A monthly publication produced by Egremont Today, it is provided in a paper format also website: www.egremont2day.co.uk

Active for Life

A bi-monthly community newsletter produced by West Cumbria Age Uk covering Egremont and Cleator Moor

Whitehaven Guide

Produced quarterly by the Guide Media Group

BBC Radio Cumbria

Local radio station produced by the BBC for Cumbria

CFM Radio

Local radio station produced by the Bauer Media Group, covering Cumbria and Southwest Scotland

ITV News, Border region

Programme news, weather and information provided by ITV Broadcasting Limited for the England/Scotland border region, covering the majority of Cumbria, Dumfries and Galloway, the Scottish Borders and parts of Northumberland.

<http://www.itv.com/news/border/story/2013-10-11/get-in-touch/>

BBC News – Look North (North East & Cumbria)

BBC's nightly regional news programme for the North East of England and Cumbria

<http://www.bbc.co.uk/programmes/b0070g1d/faq>

Church newsletters

Each of the local schools provides regular newsletters for parents and carers.

www.westlakesacademy.org.uk

www.bookwell.cumbria.sch.uk

www.orgill.cumbria.sch.uk

www.lst-bridgets-pri.cumbria.sch.uk

Community Assets

- Churches
 - St Mary & St Michael's Parish Church and Hall
 - Egremont Methodist Church and The Meeting Place
 - St Mary's Church and St Mary's Centre
- De Lucy Centre – Age UK
- Egremont Ambulance Station
- Egremont Cemetery
- Egremont Castle
- Egremont Fire Station
- Egremont Library
- Egremont Market Hall
- Egremont Sure Start Centre
- Florence Mine
- GP Surgeries
 - Fellview - Beech House Surgery
 - Westcroft House Surgery
- Lowes Court Gallery Association – inc Tourist Information Centre
- Schools
 - Bookwell Primary School
 - Orgill Primary School
 - St Bridget's Catholic Primary School
 - West Lakes Academy

Local Cumbria County Council Service Hubs

Electoral Division	Egremont ED
LA Care Homes	1
Non LA Care Homes	1
Extra Care Housing	0
Primary Schools	3
Secondary Schools	1
Adult Education Centres	1
Children's Centres	1
Family Centres	0
Cumbria Outdoors	0
Hospitals	0
Doctors Surgeries	2
Libraries	1
Book Drops	0

Archives Centres	0
Registration Offices	0
Local Links	0
Community Development Centres	0
Credit Unions	0
CCC Grant Funded or Directly Operated Swimming Pools	0
Highways Depots	0
Fleet Workshops	0
Waste Treatment Plants	0
Household Waste Recycling Centres	0
Fire Stations	1
TOTAL	12

Community Engagement

Cumbria County Council's Local Committee for Copeland Grants Panel meets quarterly to consider grant applications from constituted non-profit making groups whose project benefits Copeland communities.

Issue based meetings are held in liaison with the local County Councillors to discuss community concerns.

Key Community Contacts

David Southward, Councillor for Egremont, Cumbria County Council

- **Address:** Craiova, Sellafeld Road, Beckermest, Cumbria, CA21 2XN
- **Tel:** 01946 841476
- **Mobile:** 07817 394270
- **Email:** david.southward@cumbria.gov.uk

Cumbria County Council, Copeland Development Team

Address: Cleator Moor Library, Market Square, Cleator Moor, CA25 5AP

Tel: 01946 505020

Email: gillian.elliott@cumbria.gov.uk

Web www.cumbria.gov.uk

Copeland Borough Council

Address: Customer Services, The Market Hall, Market Place, Whitehaven, CA28 7JG

Tel: 01946 598300

Email: info@copeland.gov.uk

Web: www.copeland.gov.uk

Egremont Town Council

Address: Market Hall Offices, Market Street, Egremont, CA22 2BY

Tel: 01946 820254

Email: egremontmarkethalloffice@outlook.com

Web: www.egremonttowncouncil.co.uk