
Planning Our Future

Planning Our Future A Community Plan for Barrow Borough



What is The Community Plan?

The Community Plan presents a vision for the future of Barrow. It aims to co-ordinate the work of public, private, community and voluntary sectors to improve the social, economic and environmental wellbeing of Barrow Borough and all of its residents. It is an overarching, strategic document that brings together a range of plans, objectives and strategies so that they can be delivered in a joined-up way.

Why have a Community Plan?

The Community Plan for Barrow is designed to:

- Provide opportunities for local people to express their hopes, needs and priorities;
- Co-ordinate the actions of Barrow Borough Council, and of other public, private, voluntary and community sector organisations that operate locally, so that they can better meet and plan for the needs of the communities they serve;
- Contribute to the achievement of sustainable development both locally and on a wider scale.

By drawing together so many of the strategies and plans that have an impact on life in Barrow, and by taking a joined-up approach to delivering services, we can maximise the benefit of the resources that are being applied in the Borough, and ensure that development in one area is not causing problems in another.

Who produced the Plan?

Furness Partnership is the Local Strategic Partnership (LSP) for Barrow Borough and was formed to help bring about joint working between organisations from the public, private, voluntary and community sectors in the area.

The members of Furness Partnership are committed to working together to improve the quality of life in Barrow Borough, and they have developed the Community Plan to set out their vision and explain how they intend to achieve it.



Furness Partnership: The Local Strategic Partnership

Furness Partnership has been working together since 2001 and is made up of representatives from all the main service areas in the Borough.

Organisations from the public, private, community and voluntary sectors come together by joining **Furness Partnership**, where they make a commitment to delivering:

- More and better jobs for local people
- Better education at all levels
- Improved health for people living in the area
- Reduced crime and fear of crime
- Higher standards of housing and a more pleasant environment to live in
- Narrower gaps between quality of life for the poorest people in our community and the average.

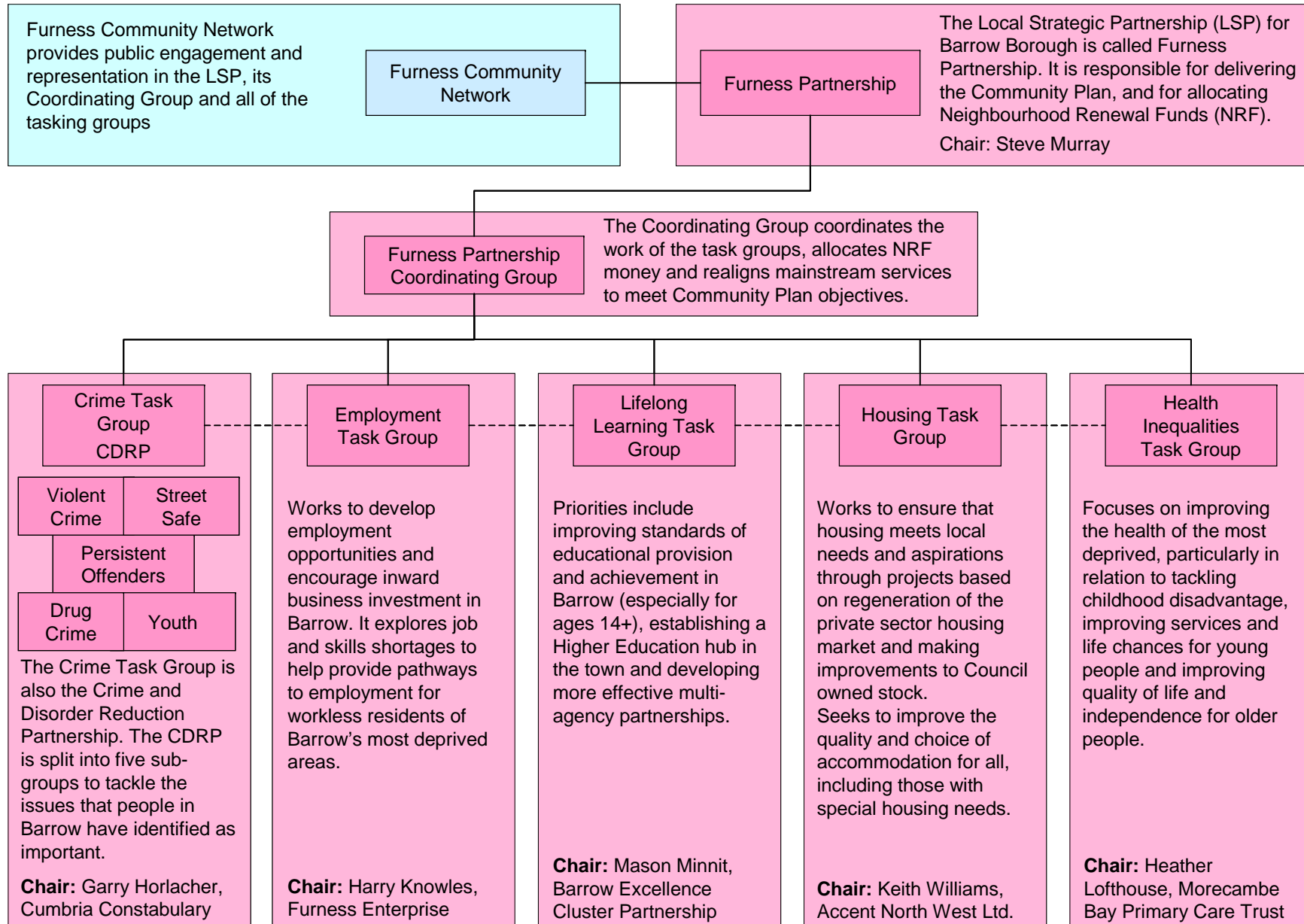
The Partnership has established five Task Groups to drive forward these improvements and the way these groups fit into the Furness Partnership is explained in the diagram on the next page.

The Chairs of the Task Groups meet regularly, along with representatives from the major public service providers, as the Furness Partnership Co-ordinating Group, while the full Furness Partnership meets three or four times a year. The full Partnership has open membership and takes overall responsibility for approving major policies, including the Community Plan.

Current Members of Furness Partnership

Accent North West Limited	Dalton & Newton Town Council
Age Concern	English Nature
Askam & Ireleth Parish Council	Furness College
BAe Systems	Furness Community Network
Barrow Borough Council	Furness Enterprise
Barrow Community Learning Partnership	Furness LGBT Forum
Barrow Community Regeneration Company	Furness Tourism Partnership
Barrow & District CVS	Government Office North West
Barrow and District Disability Assoc.	Home Start
Barrow Landlords' Forum	Impact Housing Association
Barrow Retail Group	Inland Revenue,
Barrow Sports Council	Jobcentre Plus
Barrow Tenants' Forum	Legal Services Commission
Benefits Agency	Lindal & Marton Parish Council
Church of England Urban Office	Morecambe Bay Hospitals NHS Trust
Churches Together in Barrow	Morecambe Bay Primary Care Trust
Churches Together in Dalton	National Probation Service
Citizens Advice Bureau	North West Development Agency
Community Action Furness	North West Evening Mail
Connexions Cumbria	Pension Service
Cumbria County Council	Princes Trust
Cumbria Inward Investment Agency	SureStart Barrow
Cumbria Learning and Skills Council	Voluntary Action Cumbria
Cumbria Police Authority	West Lakes Renaissance
Cumbria Constabulary	

Barrow's Local Strategic Partnership



The vision

The Barrow Community Plan is built around a long-term vision – an agreed common goal for us to work towards. Our vision is that:

In 2024, Barrow Borough will be a prosperous, pleasant, healthy and safe environment for our children and for us.

Priorities

The Furness Partnership has identified a series of priority issues that must be addressed if our vision for Barrow Borough is to be achieved. These priorities are informed by an agreed commitment that, in all of its work, Furness Partnership will consider to its overarching objective:

To improve the health and well being of children and young people, while ensuring that they acknowledge their responsibilities to the community.

The Furness Partnership's priorities, beneath this overarching objective, are to:

- Remove barriers to accessing employment
- Develop a higher education hub in Barrow
- Improve provision of post-14 education and training, and raise achievement of students aged 14 and over
- Ensure that the housing market is sustainable through Housing Market Renewal
- Improve the quality and choice of housing available, including accommodation for special needs groups
- Tackle major health problems including cancer, heart disease, mental health and accidents
- Reduce burglary, youth crime, drugs and violent crime in the Borough
- Address problems of disadvantage in children under 16
- Ensure a solid foundation for children by promoting healthy pregnancy and early childhood and by improving opportunities for young people
- Optimise independence and quality of life for older people
- Develop more integrated and effective multi-agency partnership working: To deliver our vision members of the Furness Partnership will need to work together in a joined up way across traditional boundaries.

How we will get there

The Plan will be delivered through a set of thematic action plans; each task group will develop its own action plan to deliver Community Plan objectives. The action plans will have clear targets and delivery will be monitored. The priorities will be reviewed periodically, at least every three years, to make sure that the plan is flexible, builds on our success and responds to changing needs.

Monitoring the delivery of the Plan

It is essential that the Partnership is able to report back to the community on progress in implementing the plan. Much of the activity detailed in the Community Plan is already monitored by partner organisations through processes such as Annual Reports, Best Value Performance Plans and the NHS Performance Assessment Framework. To avoid duplication, Furness Partnership's reports will

include only the main indicators of progress and act as “signposts” to the detailed activity being undertaken by each partner organisation.

Guiding Principles

In addition to the identified local priorities, four guiding principles can be seen as underpinning the work of Furness Partnership and forming strands that run throughout the Community Plan.

Neighbourhood Renewal

The Community Plan is designed to improve life in Barrow Borough for everyone, wherever they live, but it is important to recognise that people in some areas are in greater need than others. The Plan is underpinned by the need to improve core services and address real problems in some areas of the Borough.

Barrow is one of 88 local authority areas in England that receives extra funding from the Neighbourhood Renewal Fund (NRF) to help improve living conditions and services in the areas of greatest need. Funding through the NRF is not reserved for the Borough Council’s own services or for spending on a particular activity, so it can be targeted in ways that best meet local needs.

Details of Barrow Borough’s Neighbourhood Renewal Funding, and of how the funding will be used to help meet local needs, are available in the Local Neighbourhood Renewal Plan, but the principal aims of the plan are to:

- ‘Bend’ mainstream funds into areas of the Borough where there is most need, to improve the core services and make a lasting difference to those communities;
- Set priorities for targeted funds, mainly the NRF;
- Improve the effectiveness of our partnership working;
- Facilitate and encourage the involvement of local communities.

As part of our work in Neighbourhood Renewal, Furness Partnership recognises that we need to do more to improve the way we deliver services in neighbourhoods. Too often, different agencies do not co-ordinate the way that they work in the same area. This can lead to confusion and duplication of effort. We are working to establish more effective joint working at a neighbourhood level, which may involve:

- Better information sharing and provision of information to local communities,
- Establishment of local multi-agency teams;
- Setting up of joint service access points;
- More effective linking of the strategic agenda down to neighbourhood level.

Furness Partnership is developing a model for delivering joined-up services at a neighbourhood level and this is one way in which the Partnership will seek to deliver real change for people in the Borough.

Involving the Community

The involvement of local people is vital to developing and implementing an effective community plan, and key to change in the longer term. If the Community Plan is to respond to public concerns, there must be genuine community involvement in developing both the long-term vision and the shorter-term plan.

However, because many organisations were already working to existing plans, based on previous consultation and experience, the approach taken in drawing up this first Community Plan was pragmatic. As a result, the plan highlights issues that Partnership members had already identified as priorities. In future though, the Plan will be reviewed following more extensive public consultation.

One of the ways that Furness Partnership will engage with the community is by working closely with **Furness Community Network**.

Furness Community Network (FCN)

Furness Community Network is a Community Empowerment Network, set up to help the community and voluntary sector in Barrow to become involved in local decision-making and participate in Furness Partnership. FCN provides a focal point for community and voluntary groups who want to receive and exchange information and ideas. FCN is represented on each of the Furness Partnership's Task Groups and on the Co-ordinating Group.

Any community or voluntary group in the Borough can join the Network. Registration is free and membership offers a chance for local organisations to promote their activities, discover similar groups, and share resources by advertising facilities or requesting help. FCN can provide advice, training, meeting space and support for groups who wish to address particular issues. For example, FCN can help community and voluntary groups to access funding that will enable them to play a full part in the regeneration of their neighbourhoods.

FCN's **Community Resource Centre** contains information on a variety of community development and training issues, and on funding resources. Members of FCN may use free Internet facilities, and audiovisual equipment.

The Community Press

FCN has established **The Community Press** to work with volunteers from local communities to develop, write and design a newspaper about community events and issues in their area. So far, The Community Press has worked with residents to produce newspapers for people in seven of Barrow's wards.

VoiceOnline - www.voiceonline.org.uk

FCN's online magazine is a gateway to information on local news, events, statistics and careers information. It also gives local people the opportunity to take part in discussion forums on local issues and contribute articles to the magazine.

Sustainability

Sustainability is shorthand for social, economic and environmental well-being. The Community Plan is designed to improve the quality of life in the area by making social and economic progress in a way that protects and improves the environment.

Furness Partnership has worked with Cumbria County Council's sustainability team to conduct a sustainability audit of the Community Plan and is committed to delivering sustainable development for the Borough. This means delivering social and economic improvements while making prudent use of natural resources; protecting and enhancing the local environment; and making a positive contribution to meeting global environmental challenges, including taking steps to minimise waste, pollution and greenhouse gas emissions.

Protecting Biodiversity

Barrow Borough is home to a rich variety of life, from Morecambe Bay, teeming with birds, to the natural sand dune systems of Walney Island and Sandscale Haws. The national importance of these areas has been recognised by the designation of three separate Sites of Special Scientific Interest (SSSI), and their classification as candidate Special Areas of Conservation (cSAC), Special Protection Areas (SPAs) and Ramsar sites demonstrate their international significance.

Furness Partnership recognises that protecting and enhancing Biodiversity can make a significant contribution to achieving our vision for the future of Barrow Borough. Aside from providing a range of opportunities for leisure, exercise and enjoyment, our rich natural environment is a “unique selling point” in attracting new business to the area and there are opportunities for job creation in Biodiversity related enterprises. Access to green space and wildlife is recognised for its benefits to people recovering from physical or mental illness and the biodiversity interest of the Borough, properly managed, could attract tourists and related business opportunities.

Furness Partnership is committed to protecting and enhancing biodiversity within the Borough and to valuing and caring for nature wherever it is found.

Equality and Diversity

Furness Partnership believes that everyone should be treated fairly and with respect, and is committed improving life for everyone in the Borough, irrespective of race, gender, age, disability, sexual orientation or religious belief.

Discrimination is a reality for some people in the Borough. Because of race, gender, age, disability, sexual orientation and other issues, people are denied life opportunities, have difficulty accessing services, and suffer inequalities. In order to deliver our vision of a better Barrow for everyone, Furness Partnership acknowledges its responsibility to challenge unjustifiable discrimination wherever it exists, and is committed to tackling the injustice that is the result of discrimination.

Barrow Borough Council’s Equalities Working Party will assess the relevance and impact that the targets and aims of the Community Plan have on equalities. This will ensure that equality issues are reflected in the Plan and that any issues highlighted can be fed directly to the Partnership.



A Prosperous Environment

Barrow Borough is home to some of the world's finest shipbuilding and systems integration capability, and one of the UK's largest shipyards. However, while Barrow remains a shipbuilding town, the global decline in the shipbuilding industry has seen the Borough's economy diversify, and although manufacturing is still the dominant employment sector, significant numbers now work in public services, retail and hospitality.

Economy and Employment in Barrow

Furness Partnership is committed to increasing the number, variety and quality of employment opportunities within the Barrow travel-to-work area.

The Partnership will work with the private and public sector to create and safeguard jobs, and to make sure that local people have the skills and expertise to access jobs created. A key outcome in pursuit of our vision for Barrow Borough is to:

Increase levels of employment in Barrow through strategies to create new jobs and to improve the employability of local people, particularly in the areas of greatest need.

Furness Partnership will help the people and businesses of Barrow Borough to create wealth and a more diverse economic base for the area by offering financial and practical assistance to support access to employment.

There is a strong and growing entrepreneurial culture in the Borough and Furness Partnership will continue to support new and existing local businesses and encourage the use of local skills and expertise wherever possible.

Furness Partnership's work to deliver a prosperous environment by developing the local economy and generating employment opportunities is led by the Employment Task Group.

Communications

The local economy is not self-contained within the Borough, and the travel to work area includes parts of South Lakeland and Copeland districts. Large employers outside the Borough, such as GSK and Sellafield have a significant effect on the local economy.

Furness Partnership supports Cumbria Strategic Partnership's ambitions for a bridge across Morecambe Bay, coupled with road improvements linking Furness to the M6 and Scotland.

Improved transport links could broaden Barrow's travel to work area and encourage greater investment from outside the area. Another key outcome is therefore to:

Encourage inwards business investment in Barrow by improving the Borough's transport and technology based communication links, to enable the Borough to capitalise fully on its environmental assets as a location for investment, growth and prosperity.

Because of its potential to improve access to employment, Furness Partnership's work to develop the Borough's transport and technology based communication links is led by the Employment Task Group.

Education and Lifelong Learning

Central to our vision for Barrow Borough is the need to ensure that local people have the education, training and skills necessary to participate fully in the community and to access employment opportunities.

The Partnership's has made it a priority to establish a higher education hub within the Borough. We believe that a higher education hub will help the Borough to retain and attract a skilled workforce and help to generate the kind of inward business investment that will encourage graduates to remain in the area.

The Lifelong Learning Task Group of Furness Partnership has supported schools in Barrow Borough to form an Excellence Cluster, designed to help deliver improvements in pre-16 school provision in the Borough. The Cluster benefits from extra resources to help improve standards by offering extended opportunities for gifted and talented pupils and access to full time learning mentors for pupils who need them.

One of the key outcomes for the people of the Borough in terms of lifelong learning is to:

Increase the number of young people continuing in post-16 education, and increase the number and quality of opportunities for adults to be engaged in training or learning within the Borough.

Furness Partnership's work to deliver a prosperous environment through education and lifelong learning is led by the Lifelong Learning Task Group.

Key Partners

BAe Systems	Cumbria County Council
Barrow Borough Council	Cumbria Inward Investment Agency
Barrow Community Learning Partnership	Cumbria Learning and Skills Council
Barrow Community Regeneration Company	Furness College
Barrow & District CVS	Furness Community Network
Barrow and District Disability Assoc.	Furness Enterprise
Barrow Retail Group	Government Office North West
Connexions Cumbria	Jobcentre Plus
	North West Development Agency
	West Lakes Renaissance

A Pleasant Environment

Furness Partnership aims to enhance the quality of the local environment by reducing the impact of litter, dog fouling, and vandalism, and to seize opportunities to create additional green space, cycle-ways and walkways. We also recognise the need to harness the energy of local partnerships to regenerate areas of neglected commercial property and to improve leisure facilities. We aim to create an area that is attractive to young professionals and families as a place to live and work.

Biodiversity and Landscape Character

Barrow Borough contains areas of high quality environment, including beautiful beaches and inspiring scenery. The Borough's coastline is internationally recognised for its wildlife, and contains two candidate Special Areas of Conservation (cSAC), comprising three separate Sites of Special Scientific Interest (SSSI). In addition to the beautiful countryside within its boundaries, Barrow is within easy travelling distance of the Lake District National Park.

As explained on page 6, Furness Partnership recognises that the protection and enhancement of the natural environment in and around Barrow can contribute to achieving many of the Community Plan's priorities.

Furness Partnership supports the Cumbria Biodiversity Action Plan, which contains targets and actions that will positively contribute to the overall quality of life for all residents of the Borough, including helping to improve health, and raising the profile of the Borough to enhance tourism and encourage business investment.

In recognition of the links between access to nature and good physical and mental health, Furness Partnership's commitment to supporting the Cumbria Biodiversity Action Plan and preserving the natural environment is delivered through the Health Inequalities Task Group.

The Built Environment

Surrounded by these areas of outstanding natural beauty is the town of Barrow-in-Furness. Barrow is much more urban in nature than the other districts in Cumbria and over 90% of the Borough's residents live in an area classified as urban. The quality of the built environment is therefore a significant factor in defining the Borough as a pleasant place in which to live and work.

Barrow is a Victorian-built town with wide tree-lined streets and a wealth of fine buildings typified by the imposing red sandstone Town Hall. Outside of the Town Centre stand the ruins of Furness Abbey, the second largest Cistercian Abbey in England, the extensively restored Piel Castle and Dalton Castle, now a National Trust property.

Furness Partnership is committed to conserving these historically important landmarks and ensuring that new development is sympathetic to the style and character of the existing built environment.

The Partnership believes that the majority of the Borough's requirements for housing and commercial development opportunities can be met from brown-field sites.

It is likely that developments with the greatest potential to impact upon the character of the Borough's built environment will be related to housing, and for this reason Furness Partnership's commitment to preserving the character and quality of the Borough's built environment is delivered through the Housing Task Group.

Furness Partnership is committed to supporting the use of sustainable construction techniques, incorporating energy efficient design and protecting and enhancing biodiversity in the urban renewal process.

Housing

Furness Partnership recognises the important role that good quality housing, appropriate to local needs and aspirations, can play in encouraging inward investment, attracting and retaining a high quality workforce and promoting civic responsibility and community cohesion. We acknowledge too the links between good quality housing and improved health and wellbeing, greater fuel efficiency and reduced crime.

The high proportion of pre-1919 terraced houses in the Borough has meant that finding affordable housing has not been a problem in the Borough. However, following media reports of proposals for the regeneration of Barrow Docks, demand for such houses has risen and prices have increased significantly. It is not yet clear whether these rises are sustainable, but Furness Partnership will seek to ensure that good quality, affordable housing remains widely available in the Borough.

The key outcomes for developing housing to match our vision for Barrow are:

Ensure the sustainability of Barrow's housing market, through Housing Market Renewal.

Improve the quality and choice of accommodation available, including providing for people with special needs.

Furness Partnership's work to deliver a pleasant environment by improving housing provision is led by the Housing Task Group.

Culture, Arts and Sports

Barrow offers a wide range of cultural, arts and sports activities for participants, audiences and spectators and the Borough Council provides a number of facilities, including The Dock Museum, the Park Leisure Centre and Forum 28 Arts Centre.

Furness Partnership recognises the important role that the quality of local cultural and sports facilities; the success of local sports teams; and the standard of local and visiting arts productions can play in building the image of the Borough as an attractive and vibrant place to live.

Arts and Culture

In addition to providing enjoyment for participants, audiences and spectators, Culture, Arts and Sport permeate many aspects of daily life, including education, family, work, health and the economy, where they make a unique contribution to improving quality of life; helping to develop individual pride and community spirit, and making a valuable contribution to delivering key outcomes of lowering long-term

unemployment, reducing crime, improving health and increasing educational attainment.

Sport and active leisure

The energetic use of leisure time can help to deliver better health, greater longevity and improved quality of life. Partners involved in sports development and provision will seek to increasing public awareness of the benefits of participation in physical activity, and increase the rates of participation in sport and active recreation.

Furness Partnership will seek to improve quality of life in the Borough by increasing the quantity, variety and quality of cultural and recreational opportunities.

In recognition of the positive role that art, culture and sport can play in promoting good physical and mental health, Furness Partnership's work to deliver improved cultural and recreational opportunities is led by the Health Inequalities Task Group.

Tourism development and promotion

The Borough's proximity to areas of outstanding natural beauty, its unique wildlife habitats, and its rich heritage as a centre for industry and shipbuilding, all offer opportunities to attract visitors. In the longer term, the redevelopment of Barrow Port has potential to open the Borough to visitors arriving by sea, both for activities centred around the Marina itself, and as a gateway to the inland attractions of the Lake District.

As well as creating a pleasant environment for people who live and work in the Borough, Furness Partnership aims to develop and promote Barrow Borough as an attractive and interesting place to visit and stay.

Increasing visitor numbers has the potential to generate significant commercial and employment opportunities, and for this reason Furness Partnership's work to develop and promote tourism in the Borough is led by the Employment Task Group.

Key Partners

Accent North West Limited
Barrow Borough Council
Barrow Community Regeneration Company
Barrow & District CVS
Barrow Landlords' Forum
Barrow Retail Group
Barrow Sports Council
Barrow Tenants' Forum
Cumbria County Council

Cumbria Inward Investment Agency
English Nature
Furness Community Network
Furness Tourism Partnership
Government Office North West
Housing Corporation
Impact Housing Association
North West Development Agency
West Lakes Renaissance

A Healthy Environment

Good physical health and mental wellbeing are central to people's ability to participate fully in society and enjoy a high quality of life. Health is influenced by a wide range of factors such as employment, housing, education, crime reduction and overall living standards, and so all other sections of this Community Plan contribute to improving health in addition to the specific measures detailed here.

Our vision for a healthy Barrow Borough is of a place where everyone is empowered to lead a healthy life and all members of the community have equal access to high quality, local health care services.

Furness Partnership's work to deliver a healthy environment in Barrow Borough is led by the Health Inequalities Task Group.

The key outcome in working towards our vision of a healthy environment for our children and ourselves is to promote longevity of people in the Borough by addressing major health problems like cancer, heart disease, mental health and accidents.

Furness Partnership is also committed to tackling the determinants of health by promoting the benefits of a healthy diet and regular exercise; warning against the dangers of drug and alcohol abuse; helping people to quit smoking; and working towards smoke-free public places.

Other key aims of Furness Partnership include:

Ensuring a sure foundation for children through healthy pregnancy and early childhood, and by improving life-opportunities for young people

Optimising independence and quality of life for older people

Key Partners

Age Concern	Government Office North West
Barrow Borough Council	Home Start
Barrow and District Disability Assoc.	Morecambe Bay Hospitals NHS Trust
Barrow Sports Council	Morecambe Bay Primary Care Trust
Citizens Advice Bureau	North West Development Agency
Cumbria County Council	Princes Trust Sure Start Barrow
English Nature	West Lakes Renaissance
Furness Community Network	

A Safe Environment

Crime and Community Safety

Crime in Barrow Borough is much lower than the national average. For example, in 2000/1 the rate of domestic burglaries was 6.8 per 1000 households and the rate of vehicle crime 6.2 per 1000 population. Both of these were in the best quartile nationally.

However, this does not mean that we can afford to be complacent in addressing problems of crime, disorder and community safety. Furness Partnership is committed to ensuring that Barrow remains a safe and secure place for people to live and work.

We also want Barrow Borough to be a place where every member of the community is able to live and work free from fear of crime, regardless of their age, gender, race, disability, sexual orientation or religious belief. As well as taking measures to further reduce levels of crime in the Borough, tackling fear of crime will mean reassuring people about the true level of crime in the Borough, as well as assisting people to take practical steps that will help them to feel safer.

Wide ranging public consultation has identified five clear priorities for addressing crime in Barrow. These are violent crime, youth crime, burglary, drugs and fear of crime. The key indicators that will tell us whether we have achieved our vision of a safe Barrow are:

Lower rates of violent crime, burglary, drug related crime, anti-social behaviour, and youth crime and disorder, along with reduced fear of crime as measured by an annual survey into the attitudes of local people.

Fewer road, home, and leisure accidents in the Borough.

Furness Partnership's work to reduce crime and disorder in Barrow Borough is led by the Crime and Disorder Reduction Partnership, while action to reduce accidents is coordinated by the Health Inequalities Task Group.

Key Partners

Age Concern
Barrow Borough Council
Cumbria County Council
Cumbria Police Authority
Cumbria Constabulary

Furness Community Network
Government Office North West
National Probation Service
North West Evening Mail

Getting Involved

We want to make sure that as many people as possible know about the Community Plan for Barrow Borough, and that everyone in the Borough has the opportunity to get involved or have their say.

One way to find out more, or to make your views known, is to go along to one of Furness Community Network's regular Issue Forums in the Town Centre, or Cumbria County Council's Neighbourhood Forums in your area. Forums are advertised in the local press and community centres, so look out for details and get involved.

If you can access the Internet, you can learn more about Furness Partnership and The Community Plan for Barrow at www.barrowbc.gov.uk/community. You can also give us feedback online, or by emailing your comments to regen@barrowbc.gov.uk

If you prefer, you can send your comments, questions or suggestions to our FREEPOST address:

Planning Our Future
c/o Strategy and Regeneration
Barrow Borough Council
FREEPOST NAT22944
Barrow-in-Furness
LA14 2BR

Further Information

On the following pages is a list of documents and publications that can help you to find out more about the work that is being done to deliver the Community Plan's objectives. Contact the relevant agency for more information or to request a copy of the document where available.

Planning



Key Documents

Key Documents	Agency
Barrow Borough Local Development Plan Barrow Neighbourhood Renewal Strategy Heart of Barrow - Building Bridges: Delivery Plan Housing Strategy Local Arts Development Agency Action Plan	Barrow Borough Council Town Hall Duke Street Barrow-in-Furness LA14 2LD www.barrowbc.gov.uk
Barrow Borough Sports Strategy Barrow Community Regeneration Company Strategy	Barrow Community Regeneration Co. Burlington House Michaelson Road Barrow in Furness LA14 2RJ www.barrowcrc.org.uk
Barrow Crime and Disorder Reduction Strategy Youth Crime Action Plan	Crime and Disorder Reduction Partnership C/o Barrow Borough Council Town Hall Duke Street Barrow-in-Furness LA14 2LD www.barrowbc.gov/cdrp
Cumbria Local Biodiversity Action Plan Biodiversity in Community Strategies Guidance Note	Cumbria Biodiversity Partnership C/o Cumbria Wildlife Trust Brockhole Windermere Cumbria LA23 1LJ www.wildlifeincumbria.org.uk
Barrow Local Committee Plan Cumbria County Council Corporate Strategy Cumbria County Council Local Committee Plan Cumbria County Council Performance Plan Cumbria County Council Public Service Agreement Developing Youth Work in Cumbria Local Transport Plan	Cumbria County Council Corporate Management The Courts Carlisle CA3 8NA www.cumbria.gov.uk
Sustainable Cumbria: Cumbria Strategic Partnership Sub-Regional Strategy	Cumbria Strategic Partnership C/o Cumbria County Council Corporate Management The Courts Carlisle CA3 8NA www.cumbria.gov.uk
Furness Enterprise Business Plan	Furness Enterprise Furness Business Park Barrow-in-Furness LA14 2PN www.furnessenterprise.co.uk
Barrow Food Forum Action Plan Barrow Health Inequalities Action Plan Morecambe Bay Local Delivery Plan Morecambe Bay Food and Health Strategy Morecambe Bay Teenage Pregnancy and Teenage Parenting Strategy	Morecambe Bay Primary Care Trust Tenterfield Brigsteer Road Kendal LA9 5EA www.mbpct.nhs.uk

<p>Morecambe Bay Tobacco Control Strategy National Service Framework for Older People National Service Framework for Mental Health Walking the Way to Health Scheme</p>	
<p>North West Development Agency Regional Strategy</p>	<p>North West Development Agency Cumbria Office (Workington) Unit 1, Lillyhall Business Centre Jubilee Road Workington CA14 4HA www.nwda.co.uk</p>
<p>Sure Start Delivery Plan</p>	<p>Sure Start Burlington House Michaelson Road Barrow in Furness LA14 2RJ</p>
<p>West Lakes Renaissance Business Plan</p>	<p>West Lakes Renaissance Unit 8, Campus Ventures Phoenix Road Barrow-in-Furness LA14 2UA www.westlakesrenaissance.co.uk</p>

Planning Our Future

