

Access Land around Walton Moss

Access land on Walton Moss and the adjacent areas of Broomhill, Glebe and Breaks Mosses allow you to explore, on foot, a unique and internationally important raised mire (peat bog) landscape. The map on this board shows nearby access land.

Walton Moss

Raised mires depend on an active surface layer of bog moss (sphagnum species) for their growth. They are rainwater fed and grow slowly upwards with their old growth forming the underlying peat deposit. Over time, the upwards growth produces a characteristic domed surface.



Many lowland mosses in Britain have been lost or damaged by peat cutting, draining or afforestation, and so the actively growing Walton Moss makes it very important both locally and internationally.



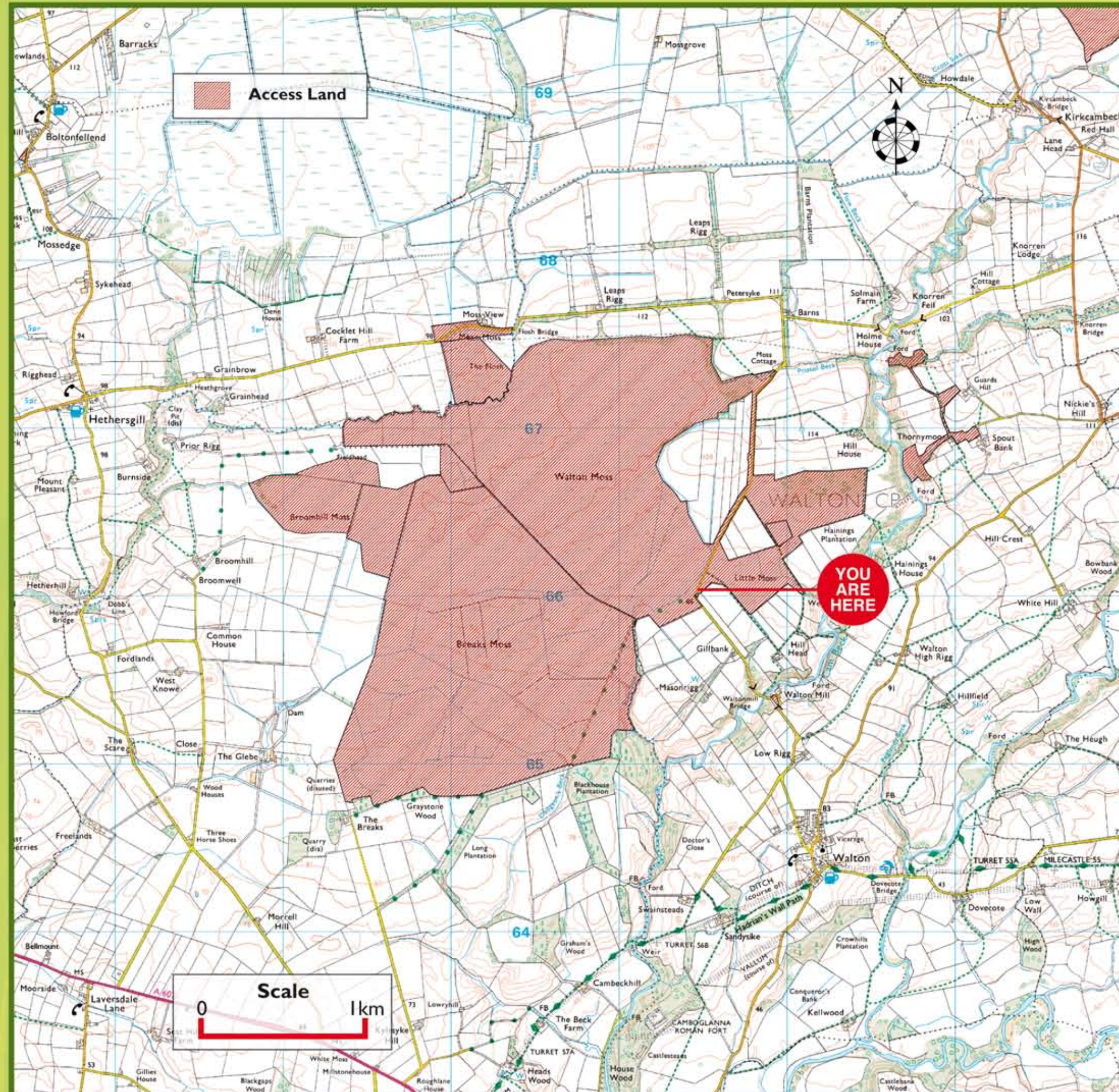
Most of the Moss is typical raised mire vegetation, dominated by sphagnum species. It is also home to all three native species of Sundew, as well as Bog Rosemary and other rare mosses and liverworts.

In the areas where the mire has been degraded and the drainage is higher, purple moor-grass, hare's-tail cotton-grass and rush species predominate.

Small areas of birch-dominated woodland and scrub occur on the periphery of the Moss.

This is an area of deep soft peat. There are many water filled ditches, pools and old peat workings, often hidden by a sphagnum moss carpet. Please exercise considerable care when walking over the site.

Visit www.naturalengland.org.uk to find out more



When you see this symbol it shows that land may be open for public access on foot. Access rights for other activities may also exist



This symbol shows there are no public access rights beyond where it is displayed



The right of access on foot also applies to wheelchair users. Where reasonably possible gates have been provided to allow access although please note that open country is often very rough terrain

For further information contact Cumbria County Council on 01228 601052

Walton Moss

Respect ... Protect ... Enjoy

- Bogs are wet areas and potentially hazardous - please be careful
- Be safe - plan ahead and follow any signs
- Keep dogs under close control
- Take care - do not start fires
- Protect plants and animals, and take your litter home
- Leave gates and property as you find them
- Consider other people



With rights... ...come responsibilities

You are welcome to explore access land around Walton Moss but remember that the area is privately owned, internationally important for wildlife and a home and place of work for many people. Please exercise your rights responsibly.

- Please use the public rights of way network or other signposted routes to get to access land - look out for the access symbol
- Be careful. Peat bogs are wet areas and potentially hazardous

Dogs in the countryside

On access land:

- Keep your dog on a fixed short lead between 1 March and 31 July. This is to protect ground nesting birds from disturbance
- Local restrictions may include a ban on dogs
- Note that dog restrictions do not apply to guide/hearing dogs, or if you are using a Public Right of Way

On Rights of Way:

- Dogs must be kept under close control, preferably on a fixed short lead

Plan ahead

Avoid disappointment by getting the latest information. Your rights to access open country can be restricted while work is carried out, and for safety or nature conservation reasons.

- Follow local signs and advice - any restrictions will be posted at access points
- Visit www.countrysideaccess.gov.uk or call the Open Access Helpline on 0845 100 3298 for up-to-date information on any restrictions
- Restrictions can be short or long term
- Public Rights of Way are not affected by restrictions to open access land
- Access land is shown on new series OS Explorer maps