

Access Land on Hutton Roof, Dalton Craggs and the adjacent Farleton Fell, Newbiggin Craggs and Holmepark Fell allow you to explore, on foot, one of England's most spectacular and unique landscapes. Together with the local rights of way network there are many opportunities to enjoy this remarkable area. The map on this board shows nearby access land.

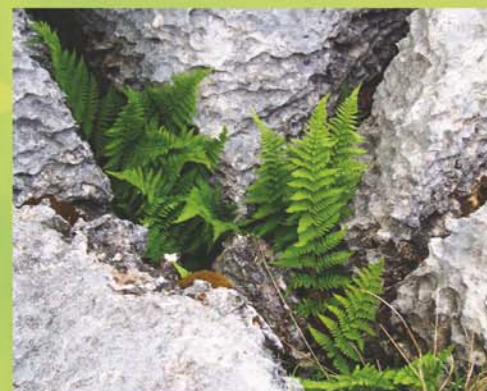
Dalton Craggs and Hutton Roof

Designated as a Site of Special Scientific Interest (SSSI), Dalton Craggs and Hutton Roof are important for both their geological and biological interest, and contain some of the finest examples of limestone pavements in Britain.

The extensive limestone pavements are formed from rock laid down in a shallow tropical sea over 350 million years ago. During the last ice age, around 10,000 years ago, the rock was scoured by a thick ice sheet. After the ice melted, it left behind a layer of glacial debris. Water filtering through the debris progressively eroded the fissures or 'grikes' and eventually washed most of the debris away.



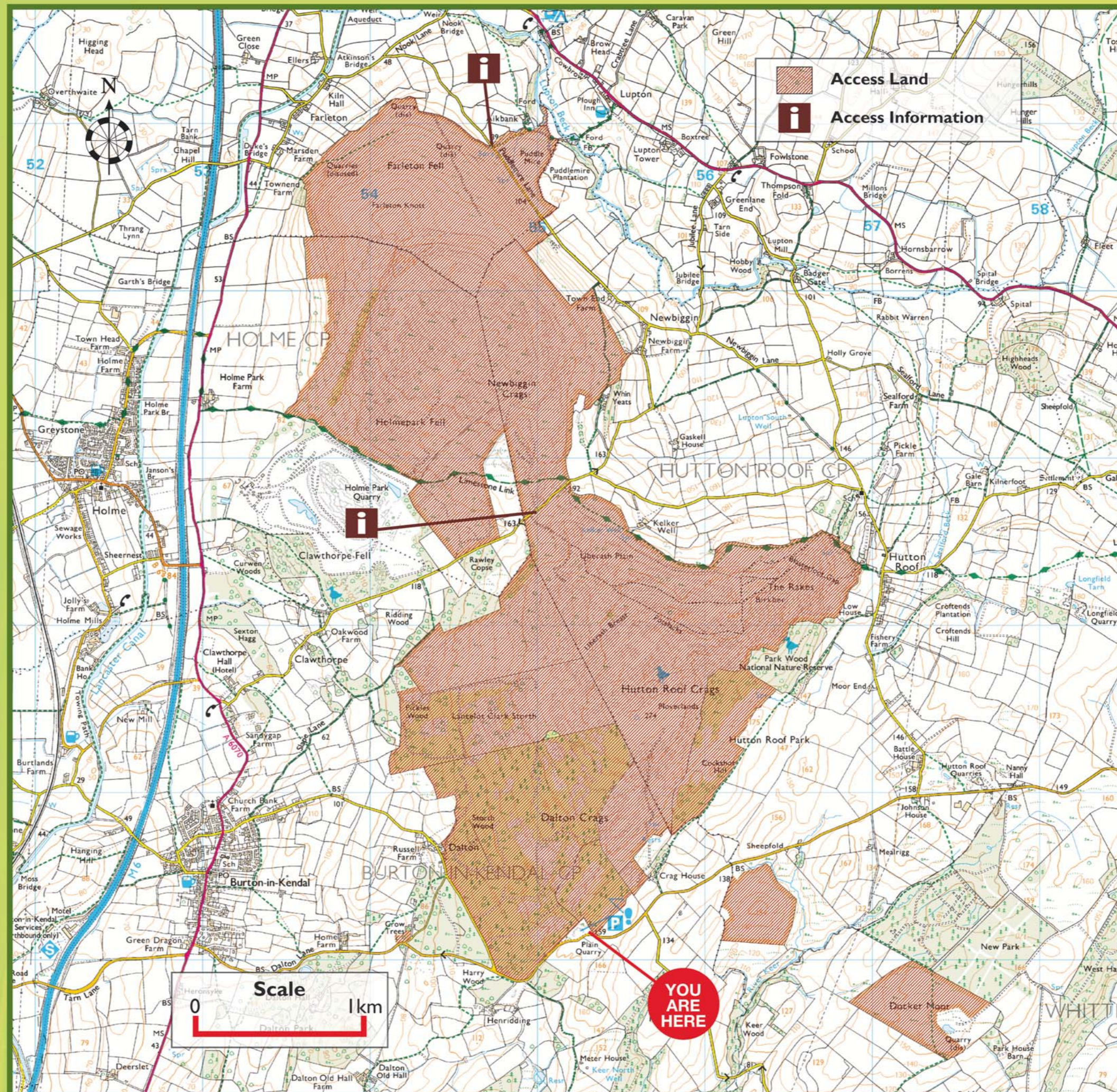
A diverse range of habitats can be found here: bare limestone pavement, calcareous grassland and heath, scrub and mature woodland. This range of habitats supports a rich flora and provides a home for several butterfly species.



The open pavements are home to the rare rigid buckler fern and limestone fern, whilst the nationally scarce blue moor grass dominates areas of thin soil covering. Woodland is making a comeback where grazing activity has reduced.

Most of this site is managed for wildlife: an important part of this management is aimed towards maintaining a mosaic of scrub types at different ages of development. Here at Dalton Craggs, conservation grazing with docile cattle is used to help maintain scrub diversity.

Visit www.limestone-pavements.org.uk to find out more



When you see this symbol it shows that land may be open for public access on foot. Access rights for other activities may also exist



This symbol shows there are no public access rights beyond where it is displayed



The right of access on foot applies to wheelchair users. Where reasonably possible gates have been provided to allow access although please note that open country is open very rough terrain

For further information contact Cumbria County Council on 01228 221052

The Visitor's Code

Respect ... Protect ... Enjoy

- Be safe - plan ahead and follow any signs
- Keep dogs under close control
- Take care - do not start fire
- Protect plants and animals, and take your litter home
- Leave gates and property as you find them
- Consider other people



With rights... ..come responsibilities

You are welcome to explore this access land but remember that the area is privately owned, important for wildlife, and a home and place of work for many people. Please exercise your rights responsibly.

- Please use the Public Rights of Way Network or other signposted routes to get to access land – look out for the access symbol
- Be careful - Access land can be rough to walk over. Keep your eyes open for hidden holes and other hazards. Limestone pavement is slippery and dangerous when wet

Dogs in the countryside

On access land:

- Keep your dog on a fixed short lead between 1 March and 31 July. This is to protect ground nesting birds from disturbance
- Local restrictions may include a ban on dogs
- Note that dog restrictions do not apply to guide or hearing dogs, or if you are using a Public Right of Way

On Rights of Way:

- Dogs must be kept under close control, preferably on a fixed short lead

Plan ahead

Avoid disappointment by getting the latest information. Your rights to access open country can be restricted while work is carried out, and for safety or nature conservation reasons.

- Follow local signs and advice – any restrictions will be posted at access points
- Visit www.countrysideaccess.gov.uk or call the Open Access Helpline on 0845 100 3298 for up-to-date information on any restrictions
- Restrictions can be short or long term
- Public Rights of Way are not affected by restrictions to open access land
- Access land is shown on new series OS Explorer maps