

Coronavirus Job Retention Scheme Update November 2021 (Sept data)

Coronavirus Job Retention Scheme (CJRS) – September 2021

On 4th November 2021 HMRC released updated statistics on the Coronavirus Job Retention Scheme (CJRS). This data supersedes all previous data released and the next update is due on 16th December 2021 which will contain final data for the entire scheme.

The full release and accompanying data tables from HMRC are available here <https://www.gov.uk/government/statistics/coronavirus-job-retention-scheme-statistics-4-november-2021>

Important methodological notes:

An employer is defined as a Pay As You Earn (PAYE) Scheme. Some organisations operate multiple payrolls and in other situations, a group of companies may pool their payrolls together under one PAYE scheme. This means the employer count does not match other published data on the business base.

An employment is defined as anyone who meets the scheme criteria set out within the published guidance. The number of such “eligible employments” has been revised at times during administration of the scheme due to methodological improvements and also a reduction in payrolled employment as a result of the economic downturn. Furlough rates are of the eligible employments figure applied by HMRC in the relevant month.

Employees furloughed by more than one employer will be counted more than once and are assigned geographically to their residential location. In the monthly data, where an employee is furloughed for more than one claim period they will be counted in each month’s data and in most cases if an employee is furloughed for part of the month they will be included in the monthly total. In the cumulative data, each unique job is counted only once. Persons furloughed for any reason (including self-isolation) are included.

Key national findings (these data are for claims for Sep 2021 made by 14th Oct)

The key points from this release covering the period to 30 September 2021 are below. Figures for September 2021 are provisional and subject to revision of around 25,000 jobs as additional claims for the period are received.

- Since the start of the scheme a cumulative total of 11.7 million jobs have been supported by the CJRS at various times. This is across all claims submitted to HMRC by 14 October 2021.
- Provisional figures show that the number of employments on furlough was 1.14 million at 30 September 2021. This is a decrease of 210,000 from 31 August when the number of employments on furlough was 1.35 million. Numbers on furlough last peaked at 5.1 million in January 2021 and have since fallen by 3.9 million. These figures do not sum exactly due to rounding.
- At 30 September 2021, provisional figures show that 21% of employers had staff on furlough, down from 23% at 31 August 2021. Also, at 30 September 2021, 4% of employments eligible for furlough were on furlough (provisional figure), down from 5% at 31 August. The proportion of jobs on furlough was higher among small and micro-sized employers than among larger employers (see section on furlough by size, below).
- The industry that had the highest proportion of employments on furlough was other service activities (11% of employments eligible for furlough on furlough at 30 September 2021). This is mainly driven by the other personal service activities industry group (15% of employments on furlough).
- The accommodation and food services sector saw the largest reduction in the number of employments on furlough between 31 August and 30 September (down by 43,000), although 9% of eligible employments in this sector were still on furlough at the end of September.
- Industry groups among those related to travel and tourism had the highest take-up rates at 30 September 2021: notably passenger air transport (36%) and travel agency and tour operator activities (35%). The passenger air transport group saw a drop of 13 percentage

Coronavirus Job Retention Scheme Update November 2021 (Sept data)

points in take-up between the end of August and the end of September. This was the largest decrease across all industry groups.

- The CJRS take-up rate decreased faster amongst larger employers from their 2021 peaks. The proportion of the largest employers (with 250 or more jobs) using the CJRS reduced from 58% in February to 22% at the end of September.
- More employments were put on furlough with male job holders than female job holders between May and September 2021. This reflects decreases in the number of jobs on furlough in sectors such as accommodation and food which typically have higher numbers of female employees.
- Use of furlough was highest in London and near most London airports at the end of September. The take-up rates for these areas was around double the UK average.
- Employments where the employee is in the 65 and over age band were more than twice as likely to be on furlough at 30 September 2021 (a take-up rate of 7%) compared to those in the 29 and under age bands (take-up rates of 3%).
- The number of employments on flexible furlough reduced by 17% in September compared to a 13% reduction for those on full furlough.
- Slightly over half of employments on furlough at 30 September had estimated annual pay of up to £15,000.

Key Cumbria findings (these data are for claims for Sep 2021 made by 14th Oct)

- The provisional figures for Sep show there was a decrease of 1,200 in the number of furloughs in Cumbria between Aug and Sep with an estimated 6,000 employments still on furlough in Sep compared to 7,200 in Aug.
- South Lakeland (1,700) and Carlisle (1,400) had the highest volume of furloughs in September.
- Carlisle and South Lakeland had the biggest numerical monthly falls (both down by 300).
- In Cumbria, more furloughs in Sept were female employees than male (3,100 v 2,800) which is not the case nationally and reflects the particular sector concentrations of furloughing in the local area.
- A higher proportion of remaining furloughing in Cumbria in September was among the over 50s than nationally (50% v 37%).
- Since the start of the scheme a cumulative total of 93,800 different jobs held by Cumbrian residents have been supported by the CJRS at some time.
- The provisional data show that in Sep 3% of eligible employments in Cumbria were still on furlough, unchanged from Aug but down from a high of 19% in January.
- Furlough rates in Sept were below the national average of 4% everywhere in Cumbria except South Lakeland where the rate was the same as nationally.
- The sector with the highest number of furloughs in Cumbria in Sept was wholesale & retail with 1,130 followed by accommodation & food services with 1,120. Between them, these two sectors account for 38% of remaining furloughing in Cumbria (down from 53% in January).
- Furloughing fell in all sectors in Cumbria in Sept with the biggest numerical declines in public admin and other (which includes agriculture) (-230), retail (-220) and accommodation & food (-210). This represents monthly falls of 40%, 16% and 16% respectively in these sectors.
- The estimated proportion of employment in each sector on furlough has become more consistent with rates only now varying from 1% in health to 5% in other services (range in January was 3% to 50%). This is likely to reflect that much of the remaining furloughing was for reasons common across all sectors such as self-isolation.

Coronavirus Job Retention Scheme Update November 2021 (Sept data)

Cumbria furlough count

Monthly furloughs

The number of furloughed employments fell by 1,200 in Cumbria according to the provisional Sep data, down from 7,200 in Aug to 6,100. This is a monthly fall of 17% which is above the UK and England falls of 15%. The % fall was higher than the England average in Carlisle, Copeland and Eden and similar to the national average elsewhere. Numerically the biggest falls were in South Lakeland (-300) and Carlisle (-300).

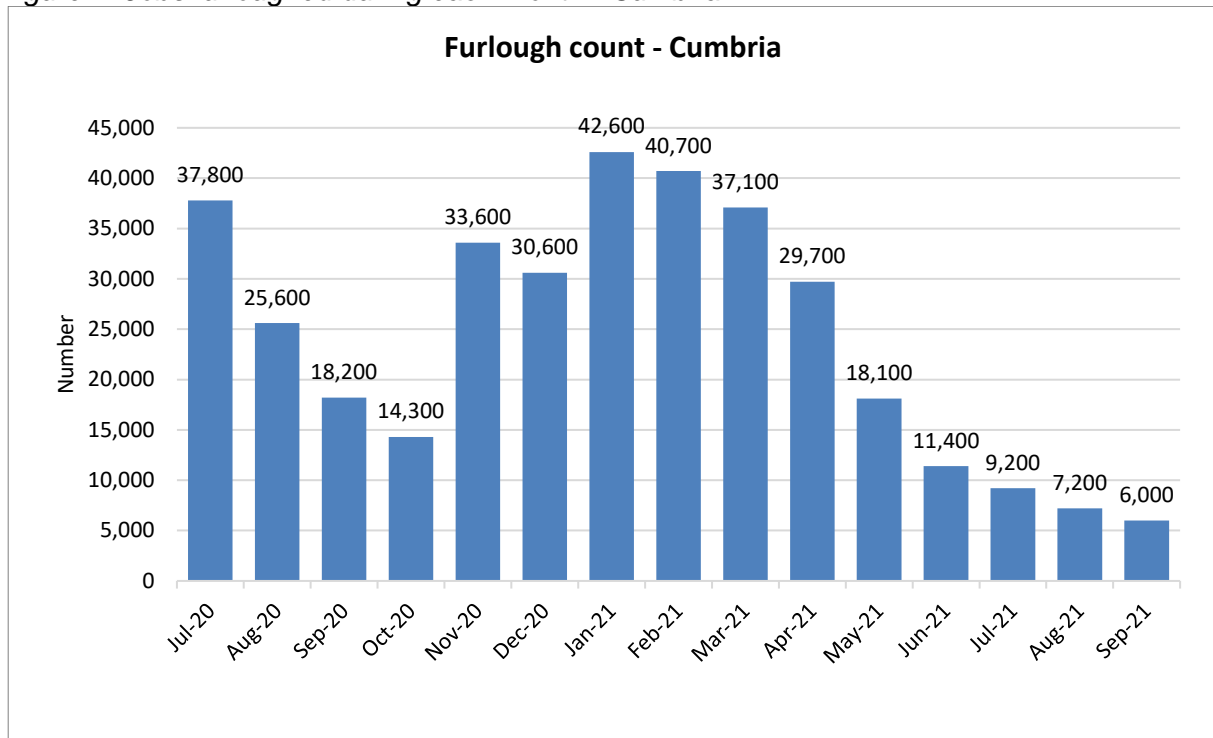
Figure 1: Jobs furloughed during each month - national and local

| | UK | England | Cumbria | Allerdale | Barrow | Carlisle | Copeland | Eden | South Lakeland |
|---------------|-----------|-----------|---------|-----------|--------|----------|----------|-------|----------------|
| Jul-20 | 5,393,100 | 4,234,200 | 37,800 | 7,100 | 3,500 | 8,800 | 4,000 | 4,700 | 9,700 |
| Aug-20 | 3,810,900 | 3,092,700 | 25,600 | 4,500 | 2,300 | 6,700 | 2,600 | 3,000 | 6,500 |
| Sep-20 | 2,843,400 | 2,328,900 | 18,200 | 3,400 | 1,700 | 4,300 | 1,900 | 2,200 | 4,800 |
| Oct-20 | 2,399,600 | 1,897,400 | 14,300 | 2,700 | 1,500 | 3,300 | 1,400 | 1,700 | 3,800 |
| Nov-20 | 3,868,200 | 3,209,500 | 33,600 | 6,700 | 2,900 | 6,600 | 3,100 | 4,300 | 10,000 |
| Dec-20 | 3,975,100 | 3,186,200 | 30,600 | 6,000 | 2,800 | 6,000 | 2,800 | 3,800 | 9,200 |
| Jan-21 | 4,883,500 | 3,886,900 | 42,600 | 8,400 | 3,600 | 9,300 | 3,800 | 5,400 | 12,000 |
| Feb-21 | 4,746,000 | 3,803,700 | 40,700 | 8,000 | 3,500 | 8,300 | 3,800 | 5,300 | 11,800 |
| Mar-21 | 4,319,100 | 3,479,600 | 37,100 | 7,500 | 3,200 | 7,500 | 3,500 | 4,800 | 10,700 |
| Apr-21 | 3,543,600 | 2,823,000 | 29,700 | 5,900 | 2,600 | 5,800 | 2,800 | 3,800 | 8,800 |
| May-21 | 2,447,400 | 1,986,000 | 18,100 | 3,400 | 1,600 | 3,700 | 1,700 | 2,100 | 5,500 |
| Jun-21 | 1,901,200 | 1,567,200 | 11,400 | 2,200 | 1,100 | 2,600 | 1,200 | 1,300 | 3,200 |
| Jul 21 | 1,587,900 | 1,323,700 | 9,200 | 1,800 | 900 | 2,100 | 900 | 1,000 | 2,500 |
| Aug (r) | 1,352,900 | 1,131,000 | 7,200 | 1,300 | 700 | 1,700 | 800 | 800 | 2,000 |
| Sep (p) | 1,143,600 | 964,600 | 6,000 | 1,100 | 600 | 1,400 | 600 | 600 | 1,700 |
| Monthly chg | -209,300 | -166,400 | -1,200 | -200 | -100 | -300 | -200 | -200 | -300 |
| Monthly % chg | -15% | -15% | -17% | -15% | -14% | -18% | -25% | -25% | -15% |

Source: HMRC (r = revised, p = provisional)

Coronavirus Job Retention Scheme Update November 2021 (Sept data)

Figure 2: Jobs furloughed during each month - Cumbria

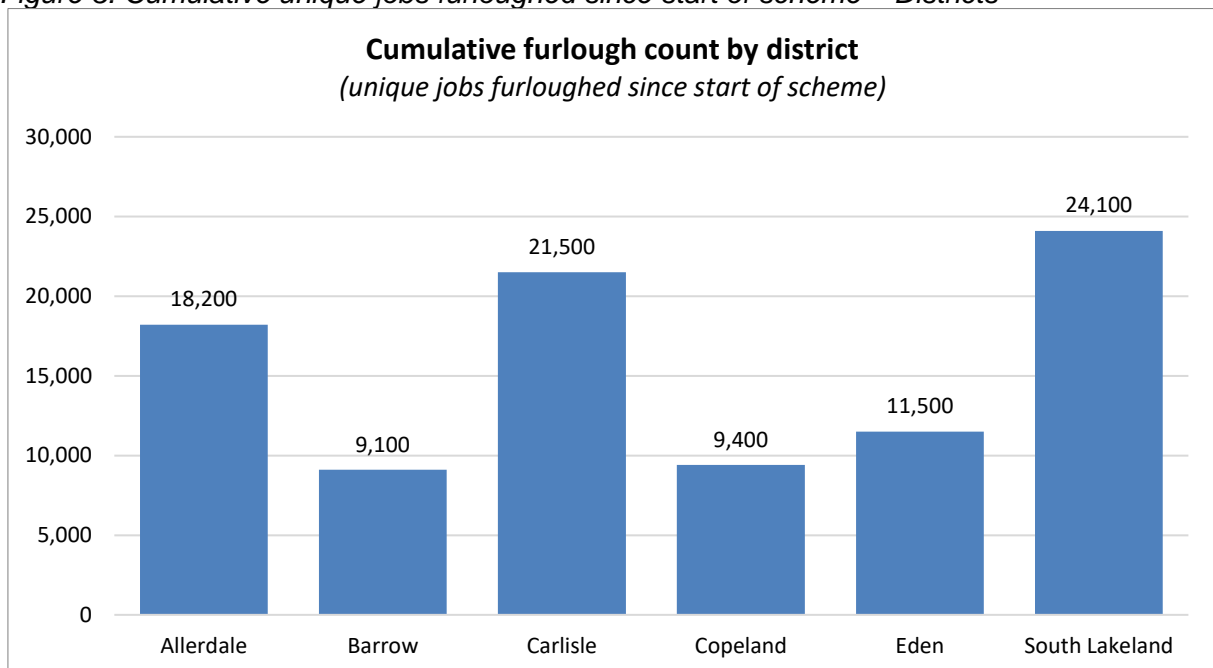


Source: HMRC (r = revised, p = provisional)

Cumulative furloughs

Since the start of the scheme, 93,800 individual jobs held by Cumbrian residents have been furloughed at some point. South Lakeland residents have experienced the highest number of furloughed jobs since the start of the scheme (24,100) with Barrow residents experiencing the lowest volume (9,100).

Figure 3: Cumulative unique jobs furloughed since start of scheme – Districts



Source: HMRC

Coronavirus Job Retention Scheme Update November 2021 (Sept data)

Furlough rate (% eligible jobs)

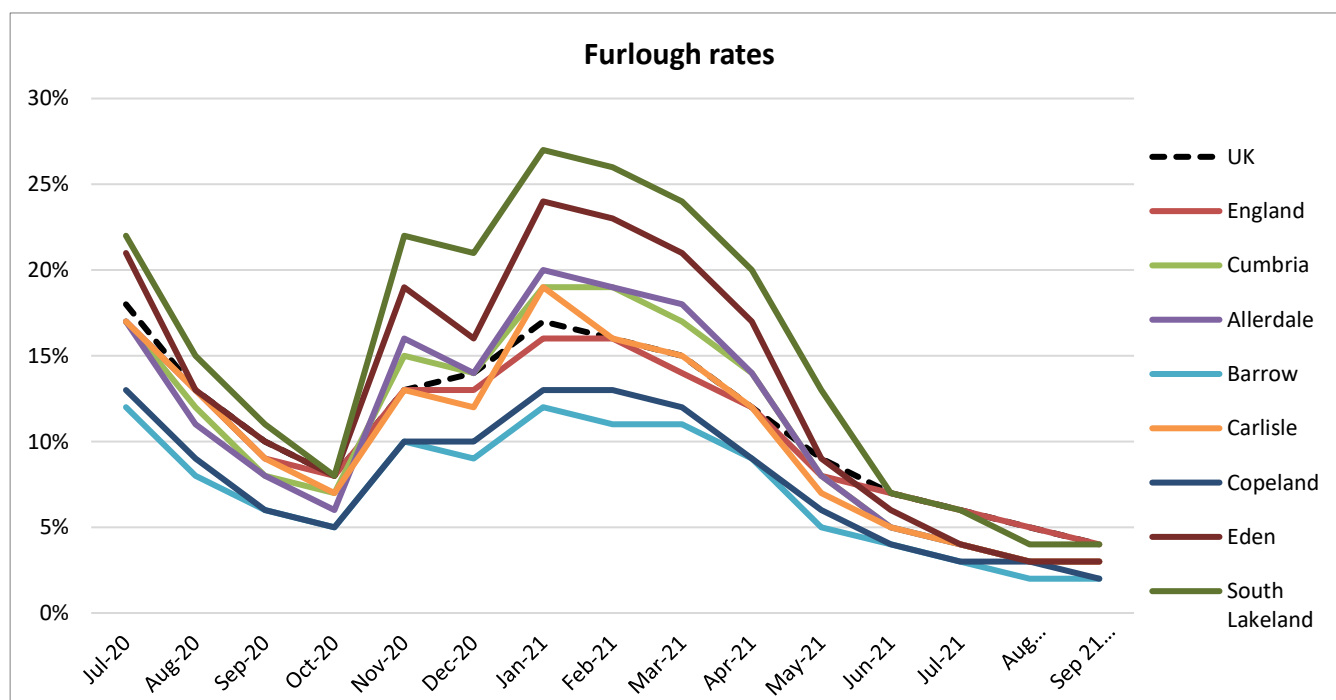
The furlough take-up rate in Cumbria was 3% in Sep, unchanged from Aug and down from a high of 19% in Jan/Feb 2021. At district level furlough rates were unchanged everywhere except Copeland where the rate fell by 1%.

Figure 4: Furlough take-up rate by month, local and national

| | UK | England | Cumbria | Allerdale | Barrow | Carlisle | Copeland | Eden | South Lakeland |
|-----------------|-----|---------|---------|-----------|--------|----------|----------|------|----------------|
| Jul-20 | 18% | 17% | 17% | 17% | 12% | 17% | 13% | 21% | 22% |
| Aug-20 | 13% | 13% | 12% | 11% | 8% | 13% | 9% | 13% | 15% |
| Sep-20 | 10% | 9% | 8% | 8% | 6% | 9% | 6% | 10% | 11% |
| Oct-20 | 8% | 8% | 7% | 6% | 5% | 7% | 5% | 8% | 8% |
| Nov-20 | 13% | 13% | 15% | 16% | 10% | 13% | 10% | 19% | 22% |
| Dec-20 | 14% | 13% | 14% | 14% | 9% | 12% | 10% | 16% | 21% |
| Jan-21 | 17% | 16% | 19% | 20% | 12% | 19% | 13% | 24% | 27% |
| Feb-21 | 16% | 16% | 19% | 19% | 11% | 16% | 13% | 23% | 26% |
| Mar-21 | 15% | 14% | 17% | 18% | 11% | 15% | 12% | 21% | 24% |
| Apr-21 | 12% | 12% | 14% | 14% | 9% | 12% | 9% | 17% | 20% |
| May-21 | 9% | 8% | 8% | 8% | 5% | 7% | 6% | 9% | 13% |
| Jun-21 | 7% | 7% | 5% | 5% | 4% | 5% | 4% | 6% | 7% |
| Jul 21 | 6% | 6% | 4% | 4% | 3% | 4% | 3% | 4% | 6% |
| Aug (r) | 5% | 5% | 3% | 3% | 2% | 3% | 3% | 3% | 4% |
| Sep (p) | 4% | 4% | 3% | 3% | 2% | 3% | 2% | 3% | 4% |
| Monthly ppt chg | -1% | -1% | 0% | 0% | 0% | 0% | -1% | 0% | 0% |

Source: HMRC (r = revised, p = provisional)

Figure 5: Furlough take-up rates, local and national



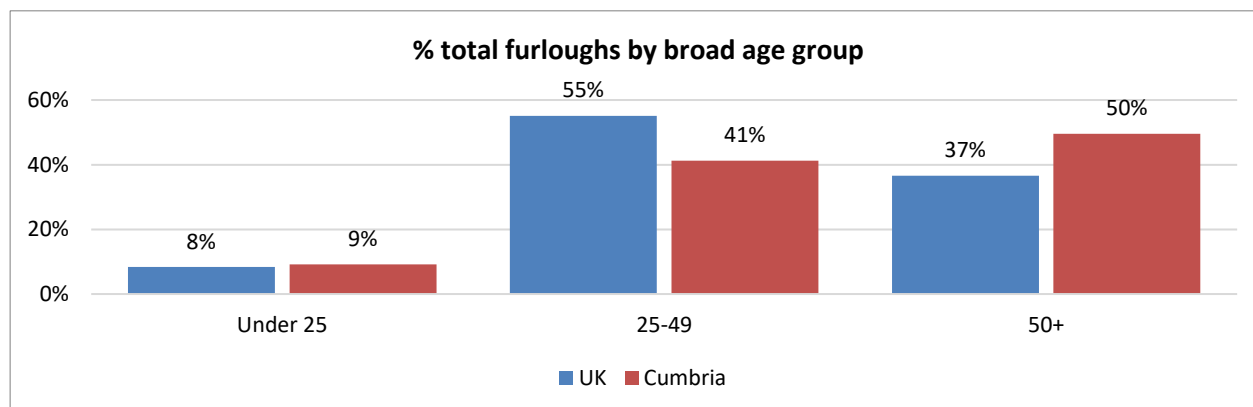
Source: HMRC (r = revised, p = provisional)

Coronavirus Job Retention Scheme Update November 2021 (Sept data)

Furlough by age band

HMRC now provide furlough data by age band for local areas (not available prior to June). This shows that a higher proportion of those still on furlough in Cumbria in September were over 50 than was seen nationally (50% v 37%) with correspondingly fewer in the age 25-49 age group. The proportion of furloughs that were under 25 was similar locally to nationally.

Figure 6: % total furloughs by broad age group – Sep 2021



Source: HMRC (Sep data are provisional)

Figure 7: Furloughs by broad age group – Sep 2021

| Number of total furloughs by age band - Sep 2021 | | | | | | | | | |
|--|---------|---------|---------|-----------|--------|----------|----------|------|----------------|
| | UK | England | Cumbria | Allerdale | Barrow | Carlisle | Copeland | Eden | South Lakeland |
| Under 25 | 80,560 | 520 | 100 | 50 | 130 | 60 | 60 | 130 | 150 |
| 25 to 29 | 84,070 | 440 | 90 | 40 | 110 | 40 | 50 | 100 | 130 |
| 30 to 34 | 106,840 | 530 | 70 | 60 | 150 | 60 | 60 | 130 | 170 |
| 35 to 39 | 115,750 | 570 | 90 | 60 | 140 | 50 | 60 | 160 | 180 |
| 40 to 44 | 114,550 | 550 | 80 | 70 | 120 | 60 | 60 | 160 | 200 |
| 45 to 49 | 109,800 | 640 | 120 | 70 | 160 | 50 | 50 | 190 | 220 |
| 50 to 54 | 114,930 | 810 | 150 | 100 | 160 | 60 | 80 | 270 | 300 |
| 55 to 59 | 102,680 | 750 | 150 | 60 | 160 | 90 | 80 | 210 | 230 |
| 60 to 64 | 76,720 | 660 | 140 | 50 | 130 | 70 | 70 | 200 | 210 |
| 65 and over | 58,730 | 540 | 100 | 40 | 120 | 60 | 70 | 150 | 160 |

Figure 8: % total furloughs by broad age group – Sep 2021

| % of total furloughs by age band - Sep 2021 | | | | | | | | | |
|---|-----|---------|---------|-----------|--------|----------|----------|------|----------------|
| | UK | England | Cumbria | Allerdale | Barrow | Carlisle | Copeland | Eden | South Lakeland |
| Under 25 | 8% | 9% | 9% | 8% | 9% | 10% | 9% | 8% | 8% |
| 25 to 29 | 9% | 7% | 8% | 7% | 8% | 7% | 8% | 6% | 7% |
| 30 to 34 | 11% | 9% | 6% | 10% | 11% | 10% | 9% | 8% | 9% |
| 35 to 39 | 12% | 9% | 8% | 10% | 10% | 8% | 9% | 9% | 9% |
| 40 to 44 | 12% | 9% | 7% | 12% | 9% | 10% | 9% | 9% | 10% |
| 45 to 49 | 11% | 11% | 11% | 12% | 12% | 8% | 8% | 11% | 11% |
| 50 to 54 | 12% | 13% | 14% | 17% | 12% | 10% | 13% | 16% | 15% |
| 55 to 59 | 11% | 12% | 14% | 10% | 12% | 15% | 13% | 12% | 12% |
| 60 to 64 | 8% | 11% | 13% | 8% | 9% | 12% | 11% | 12% | 11% |
| 65 and over | 6% | 9% | 9% | 7% | 9% | 10% | 11% | 9% | 8% |

Source: HMRC (Sep data are provisional)

Coronavirus Job Retention Scheme Update November 2021 (Sept data)

Furlough by sector

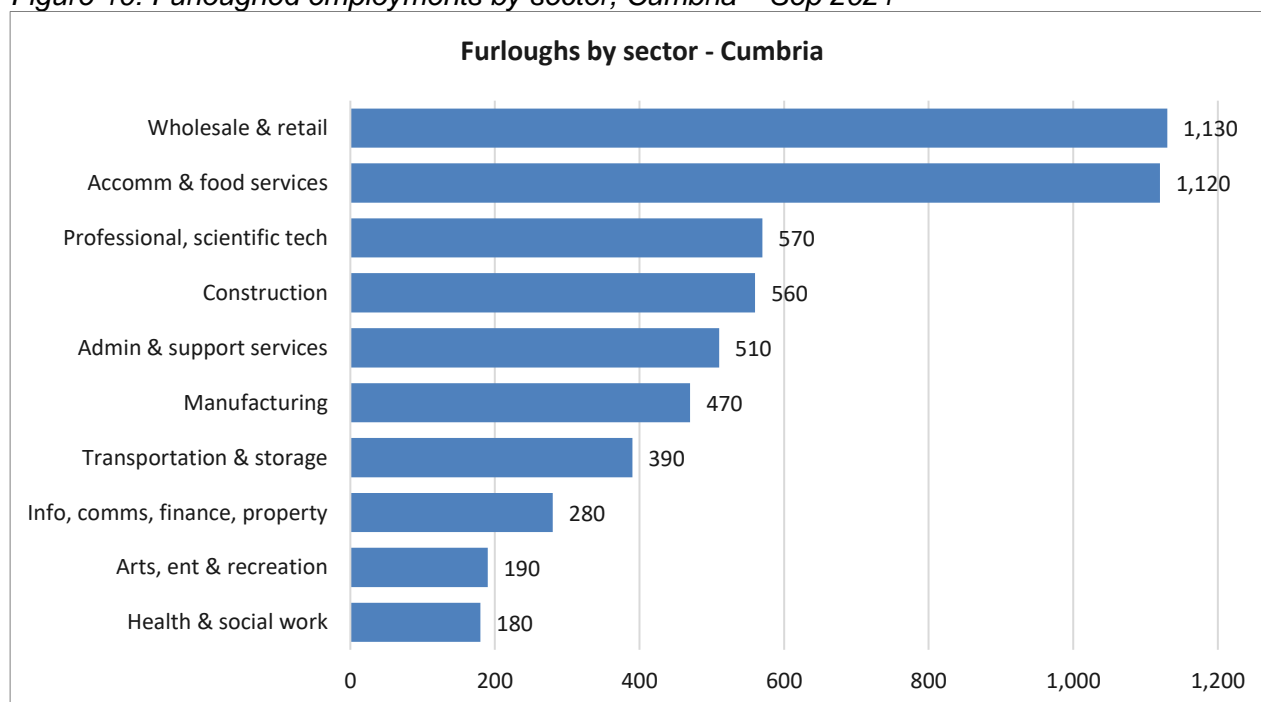
The latest release shows that of the 6,000 remaining furloughed employments in Cumbria in Sep, the highest total was in wholesale & retail with 1,130 and in accommodation & food service with 1,120 which between them account for 38% of all remaining furloughed jobs in the county. *NB: since June, agriculture, mining & utilities and education have been included in the Public Admin & Other category.*

Figure 9: Number of furloughed employments by sector Sep 2021

| | UK | England | Cumbria | Allerdale | Barrow | Carlisle | Copeland | Eden | South Lakeland |
|--------------------------------|-----------|---------|---------|-----------|--------|----------|----------|------|----------------|
| Manufacturing | 119,750 | 101,060 | 470 | 90 | 70 | 110 | 30 | 60 | 110 |
| Construction | 92,730 | 77,860 | 560 | 120 | 40 | 160 | 70 | 60 | 120 |
| Wholesale & retail | 172,010 | 145,410 | 1,130 | 170 | 140 | 230 | 90 | 130 | 370 |
| Transportation & storage | 90,590 | 78,690 | 390 | 80 | 40 | 110 | 30 | 40 | 100 |
| Accomm & food services | 156,870 | 127,740 | 1,120 | 180 | 120 | 280 | 130 | 110 | 310 |
| Info, comms, finance, property | 83,080 | 72,540 | 280 | 40 | 20 | 80 | 20 | 30 | 100 |
| Professional, scientific tech | 113,130 | 97,360 | 570 | 100 | 70 | 110 | 90 | 50 | 170 |
| Admin & support services | 121,310 | 104,990 | 510 | 140 | 50 | 100 | 50 | 50 | 120 |
| Health & social work | 43,850 | 35,520 | 180 | 50 | 40 | 30 | 0 | 30 | 30 |
| Arts, ent & recreation | 47,620 | 38,260 | 190 | 40 | 0 | 40 | 20 | 20 | 60 |
| Other service activities | 55,290 | 46,440 | 230 | 30 | 20 | 60 | 30 | 20 | 60 |
| Public admin & other | 47,360 | 38,770 | 350 | 60 | 20 | 60 | 30 | 60 | 130 |
| Total | 1,143,600 | 964,600 | 6,000 | 1,100 | 600 | 1,400 | 600 | 600 | 1,700 |

Source: HMRC (Sep data are provisional) NB: Agriculture, mining and education are now included in "public admin & other" due to low volumes.

Figure 10: Furloughed employments by sector, Cumbria – Sep 2021



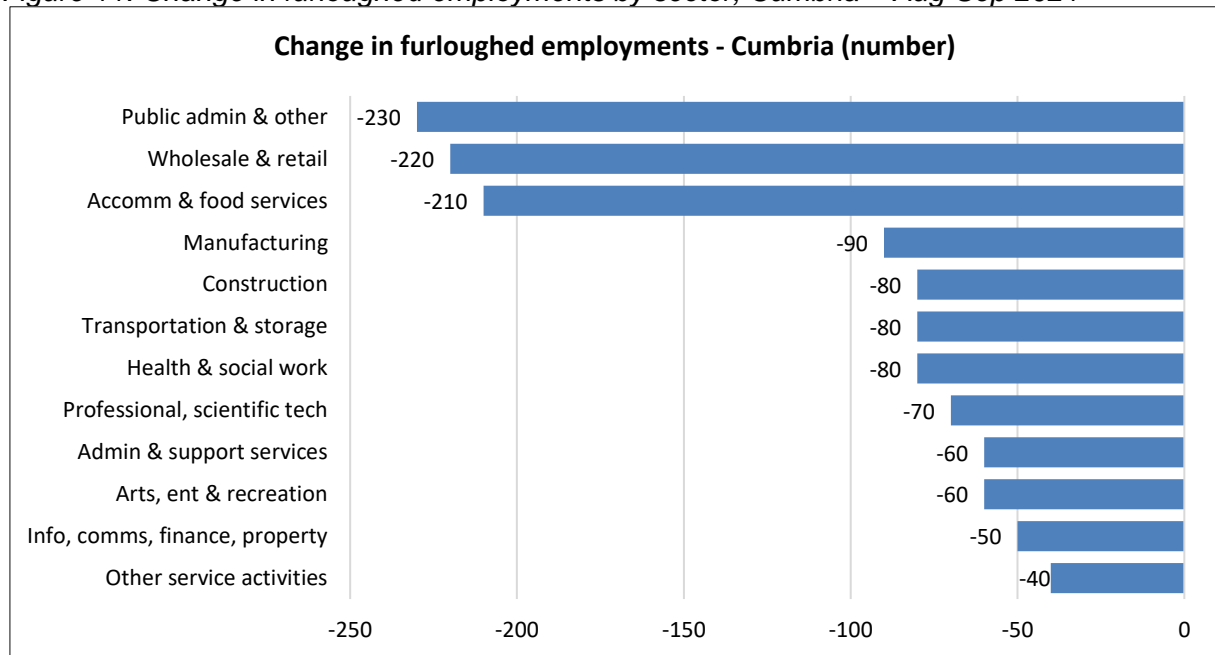
Source: HMRC (Sep data are provisional)

Coronavirus Job Retention Scheme Update November 2021 (Sept data)

The biggest numerical fall in furloughing by sector came in public admin & other services (including agriculture) where there were 230 fewer furloughs in Sep than in Aug. This was followed by retail where there were 220 fewer furlough and accommodation & food services where there were 210 fewer.

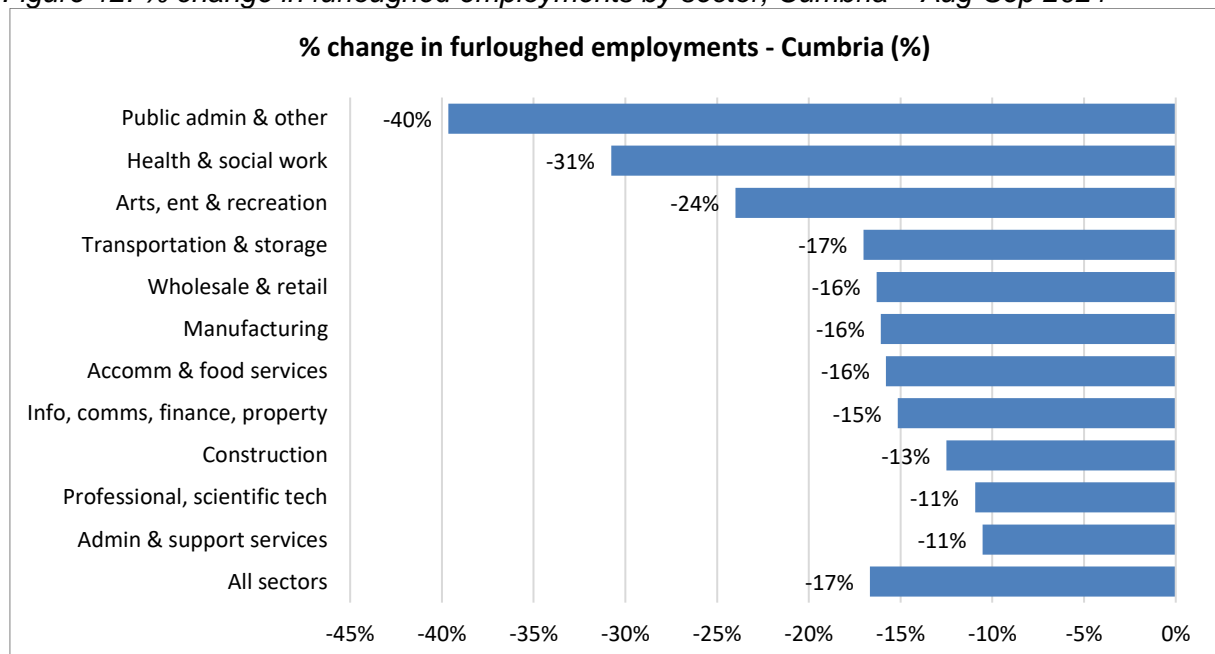
Proportionally, public admin & other service (inc agriculture) had the biggest fall in furloughing with 40% fewer in Sep than in Aug, followed by health & social work which had 31% fewer.

Figure 11: Change in furloughed employments by sector, Cumbria – Aug-Sep 2021



Source: HMRC (Sep data are provisional)

Figure 12: % change in furloughed employments by sector, Cumbria – Aug-Sep 2021



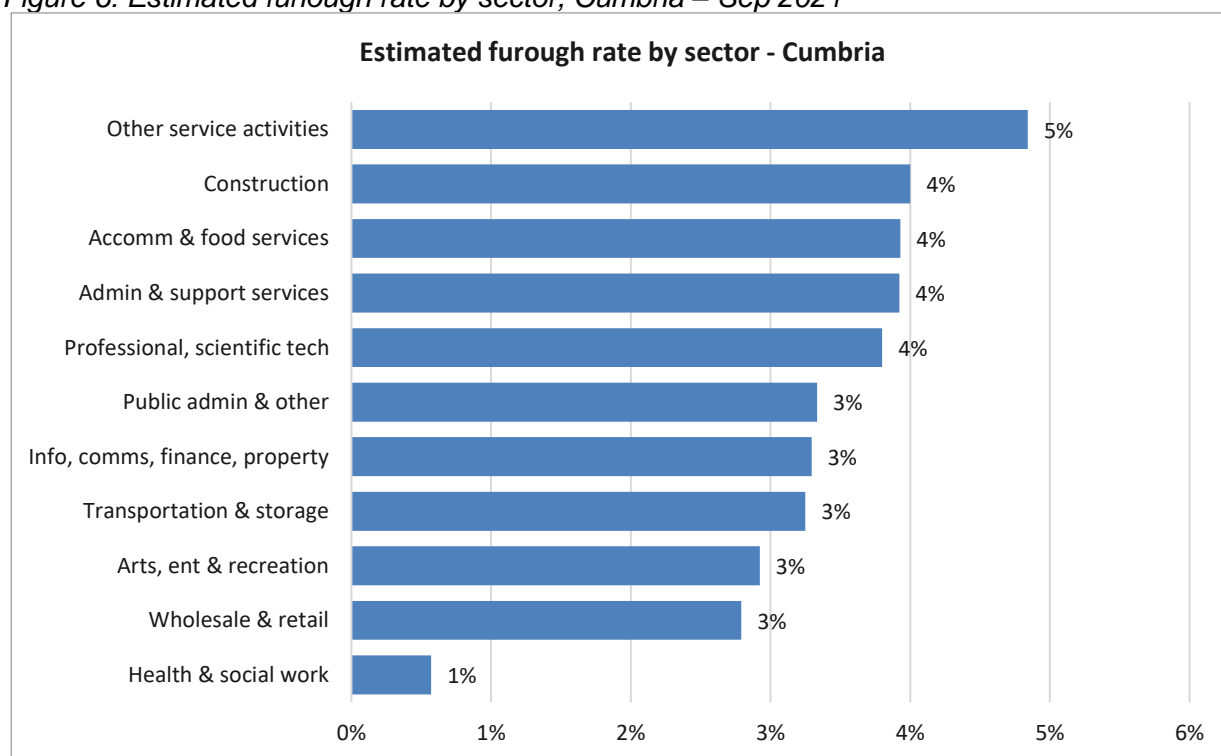
Source: HMRC (Sep data are provisional)

Coronavirus Job Retention Scheme Update November 2021 (Sept data)

HMRC do not provide sector level take-up rates for local areas or provided eligible employment data by sector. There are challenges in constructing rates using other datasets because available employment datasets are workplace based, include jobs not eligible for the furlough scheme and do not take into account declines in employment as a result of the economic downturn. As a result, these estimated rates are likely to be lower than the actual situation. However, taking those caveats into account, we have used ONS BRES data to construct broad estimates of furlough rates by sector for Cumbria (the analysis is too unreliable to present at district level).

The estimated proportion of employment in each sector on furlough has become more consistent with rates among only now varying from 1% (health) to 5% (other services) (range in January was 3% to 50%). This is likely to reflect that much of the current furloughing is now for reasons common across all sectors such as self-isolation rather than for sector-specific performance reasons.

Figure 6: Estimated furlough rate by sector, Cumbria – Sep 2021



Source: HMRC / BRES / local calculations

NB: these are not official rates and should be treated as a guide only

Coronavirus Job Retention Scheme Update November 2021 (Sept data)

Annex A

District Furloughs by Sector

NB: from June, agriculture, mining & utilities and education have been included in the Public Admin & Other category.

| Allerdale | | | | | | | | | |
|--|--------------|--------------|--------------|--------------|--------------|--------------|--------------|--------------|--------------|
| | Jan | Feb | Mar | Apr | May | Jun | July | Aug | Sep |
| Agriculture, Mining, Energy, Water & waste | 140 | 130 | 100 | 90 | 50 | | | | |
| Manufacturing | 590 | 470 | 450 | 370 | 270 | 240 | 220 | 120 | 90 |
| Construction | 520 | 470 | 380 | 290 | 190 | 160 | 140 | 130 | 120 |
| Wholesale & retail | 1,740 | 1,690 | 1,540 | 1,200 | 580 | 340 | 280 | 210 | 170 |
| Transportation & storage | 290 | 270 | 180 | 150 | 120 | 110 | 140 | 110 | 80 |
| Accommodation & food services | 2,630 | 2,550 | 2,580 | 2,270 | 1,150 | 430 | 300 | 220 | 180 |
| Info & comms, Finance & insurance, Real estate | 180 | 180 | 160 | 100 | 70 | 50 | 50 | 50 | 40 |
| Professional & scientific & technical | 290 | 310 | 240 | 180 | 160 | 140 | 130 | 110 | 100 |
| Administrative & support services | 600 | 550 | 520 | 340 | 240 | 220 | 180 | 130 | 140 |
| Education | 230 | 220 | 190 | 130 | 80 | | | | |
| Health & social work | 230 | 250 | 210 | 160 | 110 | 80 | 60 | 60 | 50 |
| Arts, entertainment & recreation | 520 | 510 | 500 | 390 | 280 | 180 | 80 | 50 | 40 |
| Other service activities | 330 | 320 | 320 | 220 | 120 | 70 | 50 | 50 | 30 |
| Public admin, Households, other | 100 | 100 | 90 | 80 | 30 | 150 | 130 | 90 | 60 |
| Total | 8,400 | 8,000 | 7,500 | 5,900 | 3,400 | 2,200 | 1,800 | 1,300 | 1,100 |

| Barrow | | | | | | | | | |
|--|--------------|--------------|--------------|--------------|--------------|--------------|------------|------------|------------|
| | Jan | Feb | Mar | Apr | May | Jun | July | Aug | Sep |
| Agriculture, Mining, Energy, Water & waste | 20 | 40 | 20 | 20 | 10 | | | | |
| Manufacturing | 180 | 140 | 130 | 110 | 90 | 90 | 80 | 70 | 70 |
| Construction | 160 | 160 | 140 | 90 | 60 | 50 | 50 | 40 | 40 |
| Wholesale & retail | 830 | 790 | 730 | 550 | 330 | 230 | 170 | 160 | 140 |
| Transportation & storage | 80 | 70 | 50 | 60 | 40 | 30 | 40 | 30 | 40 |
| Accommodation & food services | 1,070 | 1,000 | 1,000 | 960 | 560 | 290 | 220 | 120 | 120 |
| Info & comms, Finance & insurance, Real estate | 120 | 130 | 130 | 70 | 50 | 30 | 20 | 20 | 20 |
| Professional & scientific & technical | 150 | 150 | 150 | 120 | 110 | 110 | 100 | 80 | 70 |
| Administrative & support services | 290 | 280 | 260 | 170 | 120 | 90 | 80 | 50 | 50 |
| Education | 80 | 60 | 40 | 40 | 20 | | | | |
| Health & social work | 210 | 200 | 190 | 130 | 90 | 60 | 90 | 70 | 40 |
| Arts, entertainment & recreation | 270 | 270 | 260 | 180 | 80 | 40 | 30 | 20 | |
| Other service activities | 130 | 130 | 120 | 80 | 50 | 40 | 30 | 20 | 20 |
| Public admin, Households, other | 50 | 40 | 40 | 30 | 20 | 50 | 40 | 30 | 20 |
| Total | 3,600 | 3,500 | 3,200 | 2,600 | 1,600 | 1,100 | 900 | 700 | 600 |

Source: HMRC (Sep data are provisional) NB: Agriculture, mining and education are now included in "public admin & other" due to low volumes.

Coronavirus Job Retention Scheme Update November 2021 (Sept data)

| Carlisle | | | | | | | | | |
|--|--------------|--------------|--------------|--------------|--------------|--------------|--------------|--------------|--------------|
| | Jan | Feb | Mar | Apr | May | Jun | July | Aug | Sep |
| Agriculture, Mining, Energy, Water & waste | 120 | 120 | 80 | 60 | 60 | | | | |
| Manufacturing | 1,180 | 470 | 430 | 370 | 290 | 210 | 180 | 140 | 110 |
| Construction | 520 | 490 | 420 | 290 | 240 | 220 | 200 | 190 | 160 |
| Wholesale & retail | 2,240 | 1,960 | 1,820 | 1,220 | 600 | 440 | 360 | 280 | 230 |
| Transportation & storage | 270 | 240 | 210 | 160 | 130 | 130 | 120 | 130 | 110 |
| Accommodation & food services | 2,310 | 2,190 | 2,090 | 1,880 | 1,090 | 570 | 450 | 350 | 280 |
| Info & comms, Finance & insurance, Real estate | 280 | 260 | 230 | 190 | 160 | 130 | 110 | 90 | 80 |
| Professional & scientific & technical | 320 | 350 | 300 | 230 | 210 | 170 | 140 | 120 | 110 |
| Administrative & support services | 610 | 620 | 520 | 370 | 270 | 200 | 150 | 130 | 100 |
| Education | 230 | 230 | 150 | 130 | 70 | | | | |
| Health & social work | 250 | 310 | 240 | 150 | 100 | 60 | 70 | 40 | 30 |
| Arts, entertainment & recreation | 580 | 590 | 550 | 440 | 310 | 180 | 70 | 60 | 40 |
| Other service activities | 360 | 370 | 350 | 230 | 120 | 90 | 90 | 80 | 60 |
| Public admin, Households, other | 60 | 100 | 90 | 70 | 20 | 160 | 160 | 120 | 60 |
| Total | 9,300 | 8,300 | 7,500 | 5,800 | 3,700 | 2,600 | 2,100 | 1,700 | 1,400 |

| Copeland | | | | | | | | | |
|--|--------------|--------------|--------------|--------------|--------------|--------------|------------|------------|------------|
| | Jan | Feb | Mar | Apr | May | Jun | July | Aug | Sep |
| Agriculture, Mining, Energy, Water & waste | 50 | 50 | 40 | 30 | 20 | | | | |
| Manufacturing | 170 | 130 | 130 | 100 | 70 | 60 | 60 | 40 | 30 |
| Construction | 210 | 220 | 180 | 150 | 120 | 110 | 100 | 90 | 70 |
| Wholesale & retail | 570 | 540 | 490 | 390 | 200 | 150 | 140 | 120 | 90 |
| Transportation & storage | 140 | 130 | 100 | 90 | 60 | 60 | 60 | 40 | 30 |
| Accommodation & food services | 1,400 | 1,430 | 1,290 | 1,130 | 690 | 310 | 180 | 170 | 130 |
| Info & comms, Finance & insurance, Real estate | 60 | 60 | 50 | 40 | 30 | 20 | 20 | 30 | 20 |
| Professional & scientific & technical | 170 | 190 | 180 | 150 | 130 | 120 | 120 | 100 | 90 |
| Administrative & support services | 240 | 240 | 220 | 140 | 100 | 90 | 70 | 60 | 50 |
| Education | 120 | 110 | 100 | 60 | 40 | | | | |
| Health & social work | 130 | 150 | 130 | 90 | 50 | 30 | 40 | | |
| Arts, entertainment & recreation | 320 | 300 | 290 | 210 | 130 | 80 | 40 | 30 | 20 |
| Other service activities | 230 | 220 | 220 | 170 | 110 | 60 | 50 | 40 | 30 |
| Public admin, Households, other | 50 | 60 | 50 | 40 | 10 | 70 | 60 | 40 | 30 |
| Total | 3,800 | 3,800 | 3,500 | 2,800 | 1,700 | 1,200 | 900 | 800 | 600 |

Source: HMRC (Sep data are provisional) NB: Agriculture, mining and education are now included in "public admin & other" due to low volumes.

Coronavirus Job Retention Scheme Update November 2021 (Sept data)

| Eden | | | | | | | | | |
|--|-------|-------|-------|-------|-------|-------|-------|-----|-----|
| | Jan | Feb | Mar | Apr | May | Jun | July | Aug | Sep |
| Agriculture, Mining, Energy, Water & waste | 120 | 100 | 100 | 80 | 40 | | | | |
| Manufacturing | 310 | 280 | 310 | 280 | 250 | 130 | 90 | 70 | 60 |
| Construction | 250 | 230 | 170 | 110 | 90 | 80 | 70 | 70 | 60 |
| Wholesale & retail | 870 | 820 | 740 | 520 | 280 | 240 | 200 | 160 | 130 |
| Transportation & storage | 150 | 150 | 130 | 100 | 70 | 60 | 50 | 40 | 40 |
| Accommodation & food services | 2,420 | 2,420 | 2,170 | 1,880 | 750 | 280 | 180 | 130 | 110 |
| Info & comms, Finance & insurance, Real estate | 110 | 100 | 100 | 70 | 60 | 40 | 30 | 30 | 30 |
| Professional & scientific & technical | 190 | 190 | 170 | 130 | 130 | 90 | 70 | 60 | 50 |
| Administrative & support services | 270 | 260 | 240 | 150 | 100 | 80 | 60 | 50 | 50 |
| Education | 190 | 190 | 150 | 120 | 100 | | | | |
| Health & social work | 180 | 160 | 140 | 110 | 60 | 60 | 40 | 30 | 30 |
| Arts, entertainment & recreation | 200 | 190 | 180 | 150 | 80 | 60 | 40 | 20 | 20 |
| Other service activities | 150 | 150 | 140 | 70 | 50 | 30 | 30 | 20 | 20 |
| Public admin, Households, other | 30 | 60 | 60 | 60 | 20 | 130 | 90 | 80 | 60 |
| Total | 5,400 | 5,300 | 4,800 | 3,800 | 2,100 | 1,300 | 1,000 | 800 | 600 |

| South Lakeland | | | | | | | | | |
|--|--------|--------|--------|-------|-------|-------|-------|-------|-------|
| | Jan | Feb | Mar | Apr | May | Jun | July | Aug | Sep |
| Agriculture, Mining, Energy, Water & waste | 110 | 110 | 90 | 70 | 40 | | | | |
| Manufacturing | 650 | 630 | 560 | 420 | 270 | 210 | 200 | 120 | 110 |
| Construction | 460 | 410 | 340 | 240 | 190 | 180 | 160 | 130 | 120 |
| Wholesale & retail | 2,180 | 2,090 | 2,040 | 1,500 | 880 | 640 | 500 | 420 | 370 |
| Transportation & storage | 330 | 330 | 280 | 240 | 190 | 140 | 120 | 110 | 100 |
| Accommodation & food services | 4,510 | 4,580 | 4,260 | 3,930 | 2,300 | 780 | 530 | 340 | 310 |
| Info & comms, Finance & insurance, Real estate | 430 | 460 | 410 | 300 | 230 | 140 | 120 | 120 | 100 |
| Professional & scientific & technical | 380 | 380 | 350 | 290 | 260 | 220 | 200 | 180 | 170 |
| Administrative & support services | 680 | 620 | 630 | 460 | 320 | 220 | 170 | 150 | 120 |
| Education | 670 | 690 | 340 | 300 | 170 | | | | |
| Health & social work | 290 | 300 | 260 | 200 | 150 | 120 | 70 | 40 | 30 |
| Arts, entertainment & recreation | 610 | 600 | 520 | 400 | 260 | 170 | 100 | 70 | 60 |
| Other service activities | 560 | 500 | 480 | 310 | 160 | 100 | 90 | 60 | 60 |
| Public admin, Households, other | 150 | 160 | 140 | 100 | 100 | 250 | 260 | 220 | 130 |
| Total | 12,000 | 11,800 | 10,700 | 8,800 | 5,500 | 3,200 | 2,500 | 2,000 | 1,700 |

Source: HMRC (Sep data are provisional) NB: Agriculture, mining and education are now included in "public admin & other" due to low volumes.

Coronavirus Job Retention Scheme Update November 2021 (Sept data)

| Cumbria | | | | | | | | | |
|--|---------------|---------------|---------------|---------------|---------------|---------------|--------------|--------------|--------------|
| | Jan | Feb | Mar | Apr | May | Jun | July | Aug | Sep |
| Agriculture, Mining, Energy, Water & waste | 550 | 530 | 430 | 340 | 230 | | | | |
| Manufacturing | 3,070 | 2,120 | 2,010 | 1,650 | 1,240 | 930 | 830 | 560 | 470 |
| Construction | 2,120 | 1,980 | 1,630 | 1,160 | 890 | 790 | 710 | 640 | 560 |
| Wholesale & retail | 8,430 | 7,880 | 7,350 | 5,380 | 2,870 | 2,040 | 1,650 | 1,350 | 1,130 |
| Transportation & storage | 1,260 | 1,180 | 950 | 820 | 610 | 540 | 540 | 470 | 390 |
| Accommodation & food services | 14,340 | 14,160 | 13,390 | 12,040 | 6,540 | 2,660 | 1,860 | 1,330 | 1,120 |
| Info & comms, Finance & insurance, Real estate | 1,170 | 1,200 | 1,070 | 760 | 590 | 420 | 350 | 330 | 280 |
| Professional & scientific & technical | 1,500 | 1,570 | 1,390 | 1,100 | 1,000 | 850 | 760 | 640 | 570 |
| Administrative & support services | 2,690 | 2,560 | 2,380 | 1,620 | 1,150 | 900 | 710 | 570 | 510 |
| Education | 1,520 | 1,500 | 970 | 770 | 470 | | | | |
| Health & social work | 1,290 | 1,380 | 1,170 | 840 | 550 | 410 | 380 | 260 | 180 |
| Arts, entertainment & recreation | 2,490 | 2,460 | 2,300 | 1,760 | 1,130 | 700 | 340 | 250 | 190 |
| Other service activities | 1,760 | 1,680 | 1,620 | 1,090 | 610 | 390 | 340 | 270 | 230 |
| Public admin, Households, other | 440 | 510 | 460 | 380 | 210 | 810 | 740 | 580 | 350 |
| Total | 42,600 | 40,700 | 37,100 | 29,700 | 18,100 | 11,400 | 9,200 | 7,200 | 6,000 |

| UK | | | | | | | | | |
|--|------------------|------------------|------------------|------------------|------------------|------------------|------------------|------------------|------------------|
| | Jan | Feb | Mar | Apr | May | Jun | July | Aug | Sep |
| Agriculture, Mining, Energy, Water & waste | 40,940 | 38,990 | 32,670 | 25,150 | 18,020 | | | | |
| Manufacturing | 317,520 | 296,670 | 276,810 | 248,530 | 197,490 | 181,510 | 157,280 | 136,060 | 119,750 |
| Construction | 245,720 | 231,110 | 198,320 | 167,590 | 140,450 | 130,810 | 115,050 | 101,750 | 92,730 |
| Wholesale & retail | 985,140 | 932,470 | 837,260 | 610,070 | 333,500 | 272,470 | 228,050 | 198,360 | 172,010 |
| Transportation & storage | 192,660 | 197,260 | 195,660 | 174,530 | 154,920 | 139,420 | 125,620 | 110,930 | 90,590 |
| Accommodation & food services | 1,234,410 | 1,190,570 | 1,114,150 | 987,840 | 629,720 | 355,780 | 263,730 | 199,740 | 156,870 |
| Info & comms, Finance & insurance, Real estate | 209,100 | 204,980 | 188,780 | 162,540 | 141,660 | 118,230 | 102,490 | 93,230 | 83,080 |
| Professional & scientific & technical | 272,260 | 269,380 | 245,380 | 211,530 | 185,250 | 162,710 | 140,650 | 127,310 | 113,130 |
| Administrative & support services | 401,010 | 390,290 | 342,000 | 294,380 | 225,900 | 194,040 | 163,600 | 141,690 | 121,310 |
| Education | 192,670 | 193,900 | 148,250 | 92,900 | 65,110 | | | | |
| Health & social work | 185,540 | 184,910 | 158,410 | 116,710 | 83,500 | 72,540 | 65,130 | 55,840 | 43,850 |
| Arts, entertainment & recreation | 317,710 | 316,540 | 299,280 | 233,180 | 148,740 | 100,110 | 74,260 | 59,540 | 47,620 |
| Other service activities | 223,780 | 226,080 | 213,390 | 158,870 | 99,840 | 85,380 | 73,560 | 63,190 | 55,290 |
| Public admin, Households, other | 65,050 | 72,820 | 68,700 | 59,790 | 23,280 | 88,210 | 78,500 | 65,200 | 47,360 |
| Total | 4,883,500 | 4,746,000 | 4,319,100 | 3,543,600 | 2,447,400 | 1,901,200 | 1,587,900 | 1,352,900 | 1,143,600 |

Source: HMRC (Sep data are provisional) NB: Agriculture, mining and education are now included in "public admin & other" due to low volumes.