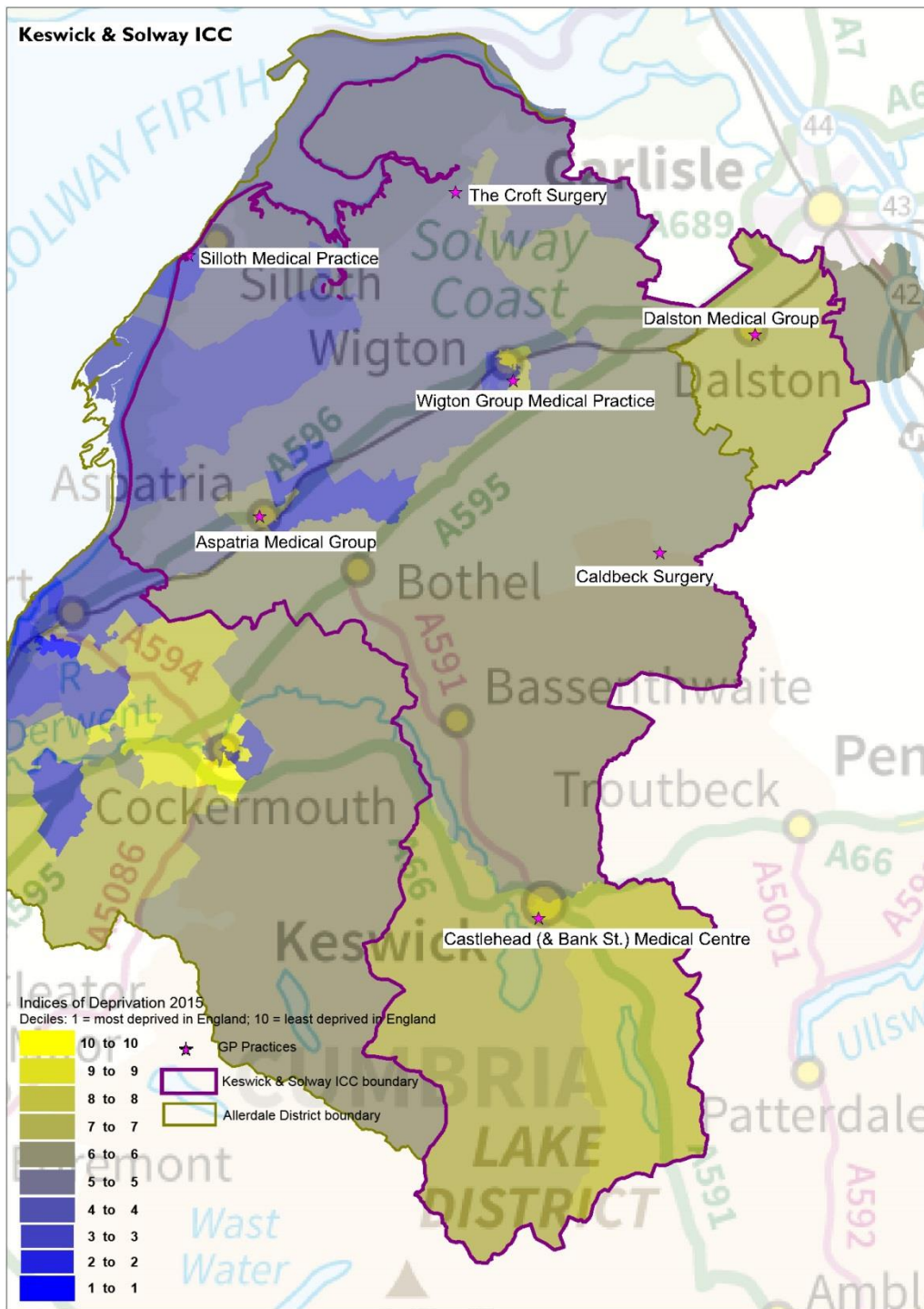


Keswick & Solway ICC

Figure 1: Keswick & Solway ICC with Indices of Deprivation 2015



Key issues

- Older population projected to increase in the district (Allerdale)
- Life Expectancy (males and females) in the district below national average
- Elective hospital admissions for hip replacement above national average
- Incidence of prostate cancer above national average

Keswick & Solway ICC

Key: Text in *blue* refers to *registered population*; text in black refers to *resident population*. Where possible, comparisons with North Cumbria have been included; as well as benchmarking data against the England average.

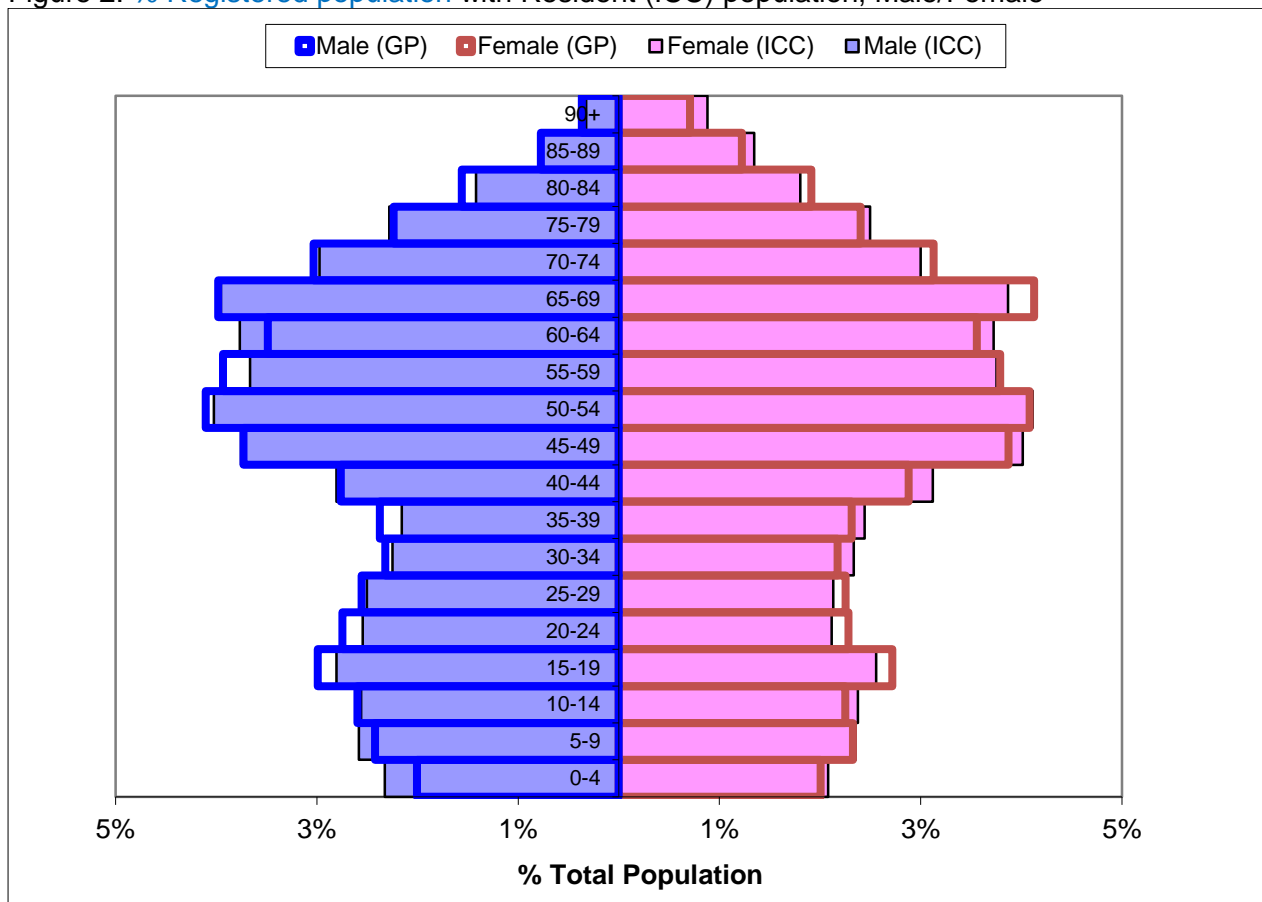
Table 1: Demographics, Keswick & Solway ICC

	ICC
Registered Population (total combined GPs within ICC)	40,667
Mid-Year Population, ONS 2015 (calculations based on % within ICC)	36,522
% 0-19 years	19.8%
% 15-64 years	60.3%
% 65+ years	25.6%
% 85+ years	3.2%
Black and Minority Ethnic (BME) Population (%)	1.2%
Population whose ethnicity is not 'White UK' (%)	2.8%
Proficiency in English (% of people who cannot speak English well or at all)	0.2%
Provision of 1 hour or more unpaid care per week (%)	11.5%
Provision of 50 hours or more unpaid care per week (%)	2.5%

Source: GP Population NHS Digital, July 2016

https://data.gov.uk/dataset/numbers_of_patients_registered_at_a_gp_practice ; Mid-Year Population Estimates, Office for National Statistics, 2015 <https://www.ons.gov.uk/> ; Census 2011 <https://www.ons.gov.uk/census/2011census>

Figure 2: % Registered population with Resident (ICC) population, Male/Female



Source: GP Population NHS Digital, July 2016; Mid-Year Population Estimates, Office for National Statistics, 2015

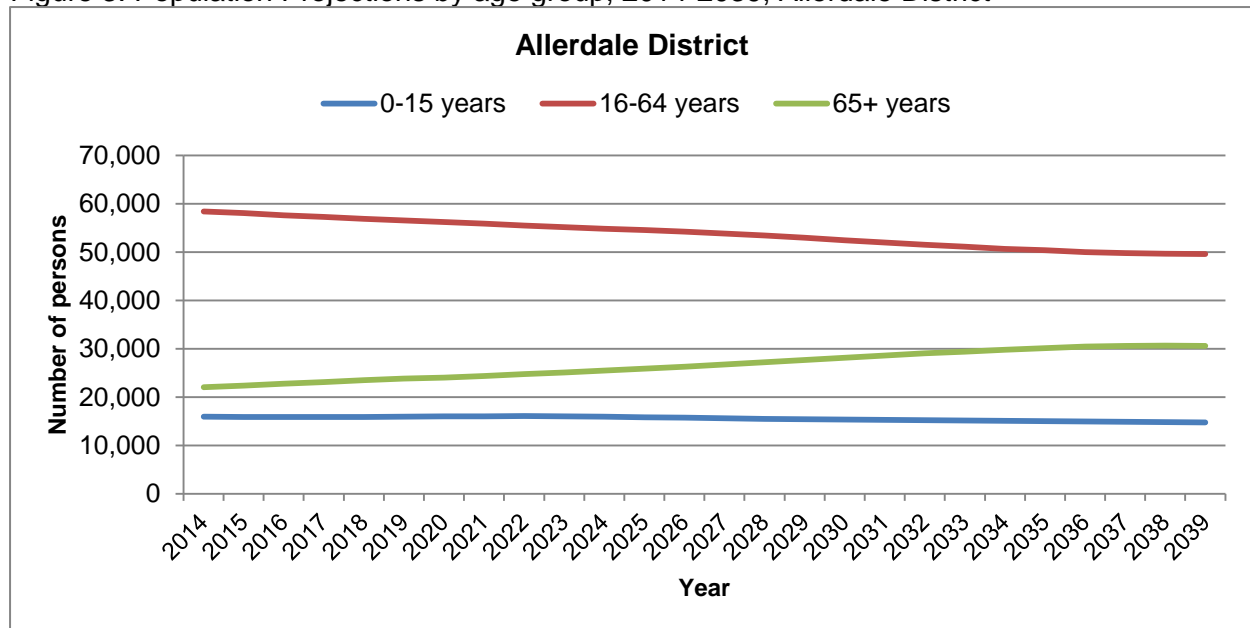
Keswick & Solway ICC

Table 2: Population Projections by age group, 2014-2039, Allerdale District

	Population			Numerical Change		Proportional Change	
	2014	2019	2039	2014-2019	2014-2039	2014-2019	2014-2039
All Ages	96,471	96,278	94,978	-193	-1,493	-0.2	-1.5
0-15 years	15,956	15,947	14,746	-9	-1,210	-0.1	-7.6
16-64 years	58,447	56,534	49,631	-1,913	-8,816	-3.3	-15.1
65+	22,068	23,796	30,600	1,728	8,532	7.8	38.7

Source: 2014-Based Sub-National Population Projections, Office for National Statistics
<https://www.ons.gov.uk/peoplepopulationandcommunity/populationandmigration/populationprojections>

Figure 3: Population Projections by age group, 2014-2039, Allerdale District



Source: 2014-Based Sub-National Population Projections, Office for National Statistics

Comparison with England:

● significantly worse ● significantly better ● not significantly different from average

Table 3: Socio-Economic

	Keswick & Solway ICC	North Cumbria	England
Unemployment (%) 2015-16	0.9	1.5%	1.8%
Long Term Unemployment (Rate/1,000, 16-64 years) 2015-16	1.9	3.9	4.3

Source: Local Health, Public Health England <http://www.localhealth.org.uk/>

Table 4: Lifestyle

	Keswick & Solway ICC	North Cumbria	England
Hospital stays for alcohol related harm (SAR) 2010/11-2014/15	102.5	127.2	100
Obese adults (%) 2006-2008	24.5	24.6%	24.1%
Binge drinking adults (%) 2006-2008	21.1	22.1%	20.0%

Keswick & Solway ICC

Healthy eating adults (%)2006-2008	30.2	28.1%	28.7%
Inactive < 30 mins moderate physical activity per week (%) (Adults Aged 16+, 2015-2016) (District)	16.8%	(Cumbria) 20.4%	22.0%
Fairly active 30-149 mins moderate physical activity per week (%) (Adults Aged 16+, 2015-2016) (District)	13.1%	(Cumbria) 12.3%	12.6%
Active = 150+ mins moderate physical activity per week (%) (Adults Aged 16+, 2015-2016) (District)	70.1%	(Cumbria) 67.3%	65.4%
Smoking prevalence in adults - current smokers (Adults Aged 18+, 2016) (District)	17.7%	(Cumbria) 15.5%	15.5%

Source: Local Health, Public Health England <http://www.localhealth.org.uk/> and Active Lives Survey <https://www.sportengland.org/research/active-lives-survey/> Public Health Outcomes Framework <http://fingertips.phe.org.uk/>

Table 5: Child health

	<i>Keswick & Solway ICC</i>	<i>North Cumbria</i>	<i>England</i>
Infant Mortality (rate per 1,000 live births) 2013-15 (District)	3.7		3.9
Low Birth Weight Births (%) 2010-14	6.2	7.1%	7.4%
Child Development at age 5 (%) 2013-14	58.4	58.2%	60.4%
GCSE Achievement (5A*-C inc. Eng & Maths) (%) 2013-14	61.2	56.2%	56.6%
Obese Children (Reception Year) (%) 2012/13-2014/15	10.0	9.9%	9.3%
Children with excess weight (Reception Year) (%) 2012/13-2014/15	24.0	24.7%	22.2%
Obese Children (Year 6) (%) 2012/13-2014/15	19.9	20.0%	19.0%
Children with excess weight (Year 6) (%) 2012/13-2014/15	35.8	35.2%	33.4%
Deliveries to teenage mothers (%) 2010/11-2014/15	N/A – zero divide		1.2%

Source: Local Health, Public Health England <http://www.localhealth.org.uk/> . For trend data go here: <http://fingertips.phe.org.uk/>

Table 6: Emergency and Elective hospital admissions for hip fractures, Standardised Admission Ratios (SARs), 2010/11 to 2014/15

	<i>Keswick & Solway ICC</i>	<i>North Cumbria</i>	<i>England</i>
Emergency hospital admissions for hip fracture (65+yrs)	93.3	103.7	100
Elective hospital admissions for hip replacement	137.7	122.7	100

Source: Local Health, Public Health England <http://www.localhealth.org.uk/>

Table 7: Cancer incidence, Standardised Incidence Ratios (SIRs), 2010-2014

	<i>Keswick & Solway ICC</i>	<i>North Cumbria</i>	<i>England</i>
Incidence of all cancer	95.0	99.4	100
Incidence of breast cancer	94.1	101.5	100
Incidence of colorectal cancer	105.8	102.3	100
Incidence of lung cancer	79.1	97.2	100
Incidence of prostate cancer	116.1	106.3	100

Source: Local Health, Public Health England <http://www.localhealth.org.uk/>

Keswick & Solway ICC

Table 8: Life Expectancy (Years); mortality and cause of death, Standardised Mortality Ratios (SMRs), 2010-2014

	Keswick & Solway ICC	North Cumbria	England
Life Expectancy at birth - MALE (2013-15) (District)	78.9	(Cumbria) 79.2	79.5
Life Expectancy at birth – FEMALE (2013-15) (District)	82.3	(Cumbria) 82.8	83.1
Healthy Life Expectancy at birth - MALE (2009-13) (District)	63.4	(Cumbria) 63.8	63.5
Healthy Life Expectancy at birth - MALE (2009-13) (District)	64.8	(Cumbria) 65.3	64.8
Deaths from all causes, under 75 years	86.5	104.4	100
Deaths from all cancer, under 75 years	88.4	103.7	100
Deaths from circulatory disease, under 75 years	84.1	103.3	100
Deaths from coronary heart disease, under 75 years	92.8	112.8	100
Deaths from stroke, all ages	110.2	110.9	100
Deaths from respiratory diseases, all ages	85.3	97	100

Source: Local Health, Public Health England <http://www.localhealth.org.uk/>

Table 9: Travel & Transport

	Keswick & Solway ICC	England
No cars or vans in household (%) (2011)	14.8%	25.8%
1+ car(s) or van(s) available in household (%) (2011)	85.2%	74.2%
Average travel times to key services - public transport/walking (mins) 2014 (District)	25.9	17.0
Average travel times to key services - car (mins) 2014 (District)	12.5	10.3

Source: Census 2011 <https://www.ons.gov.uk/census/2011census> ; Department for Transport, 2014. <https://www.gov.uk/government/collections/journey-time-statistics>

Table 10: Disease/condition prevalence. GP Practice Register(s) for diseases/conditions, 2015-16

	Keswick & Solway ICC		CCG		England	
	Number	%	Number	%	Number	%
Hypertension patients	6,931	17.10%	83,081	15.92%	7,949,274	13.81%
Diabetes patients	2,460	7.21%	31,467	7.27%	3,033,529	6.55%
Asthma patients	2,630	6.49%	34,613	6.63%	3,400,679	5.91%
Dementia patients	356	0.88%	5,118	0.98%	436,805	0.76%

Source: Quality Outcomes Framework, NHS Digital, 2015-16. <http://content.digital.nhs.uk/qof>

Health services use

Table 11: Health Services Activity: utilisation numbers and rates (per 1,000 population); year-to-date 2016-17 (to September)

	Number		Rate per 1,000	
	Keswick & Solway ICC	CCG	Keswick & Solway ICC	CCG
Non Elective	1,768	25,155	38.17	43.86
Total Electives	2,746	34,174	59.29	59.59
Total Outpatient Firsts	3,746	48,664	80.88	84.85
Total Outpatient Subsequent	2,177	49,050	47.01	85.52
Accident & Emergency Consultant Led Only	4,475	69,651	96.62	121.44

Source: NHS North of England Commissioning Support Unit (NECS). Glossary available.

Keswick & Solway ICC

Adult Social care

Table 12: Number and rate (per 10,000, 18+ population) of services commissioned, by ICC and Cumbria County Council, during Oct' 2015 – Sep' 2016

	Keswick & Solway ICC		Cumbria	
	<i>Number</i>	<i>Rate</i>	<i>Number</i>	<i>Rate</i>
Residential Care	141	38.6	2,409	48.4
Nursing Care	30	8.2	891	17.9
Homecare	202	55.3	3,850	77.3
Day Services	81	22.2	1,380	27.7
Reablement	92	25.2	2,384	47.9
Assistive Technology (Telecare)	63	17.2	1,221	24.5
Carers Budget/ ISF payments/ Direct payments	159	43.5	2,472	49.6
Total service users	592	162.1	10,826	217.4

Source: Adult Social Care, Cumbria County Council

Mental Health

Table 13: Numbers and rates (per 1,000) of A&E attendances for mental health conditions; NHS Cumbria CCG and GP Practice Based Localities, 2013-14 to 2015-16.

<i>Locality</i>	<i>2013-14</i>		<i>2014-15</i>		<i>2015-16</i>	
	<i>Number</i>	<i>Rate</i>	<i>Number</i>	<i>Rate</i>	<i>Number</i>	<i>Rate</i>
Allerdale (Locality/District)	410	3.9	422	4.0	547	5.2
NHS Cumbria CCG	2,581	4.9	2,690	5.2	3,116	6.0

Source: North of England Commissioning Support (NECS) Information Service. *Note: CCG total does not include those unassigned to a locality.*

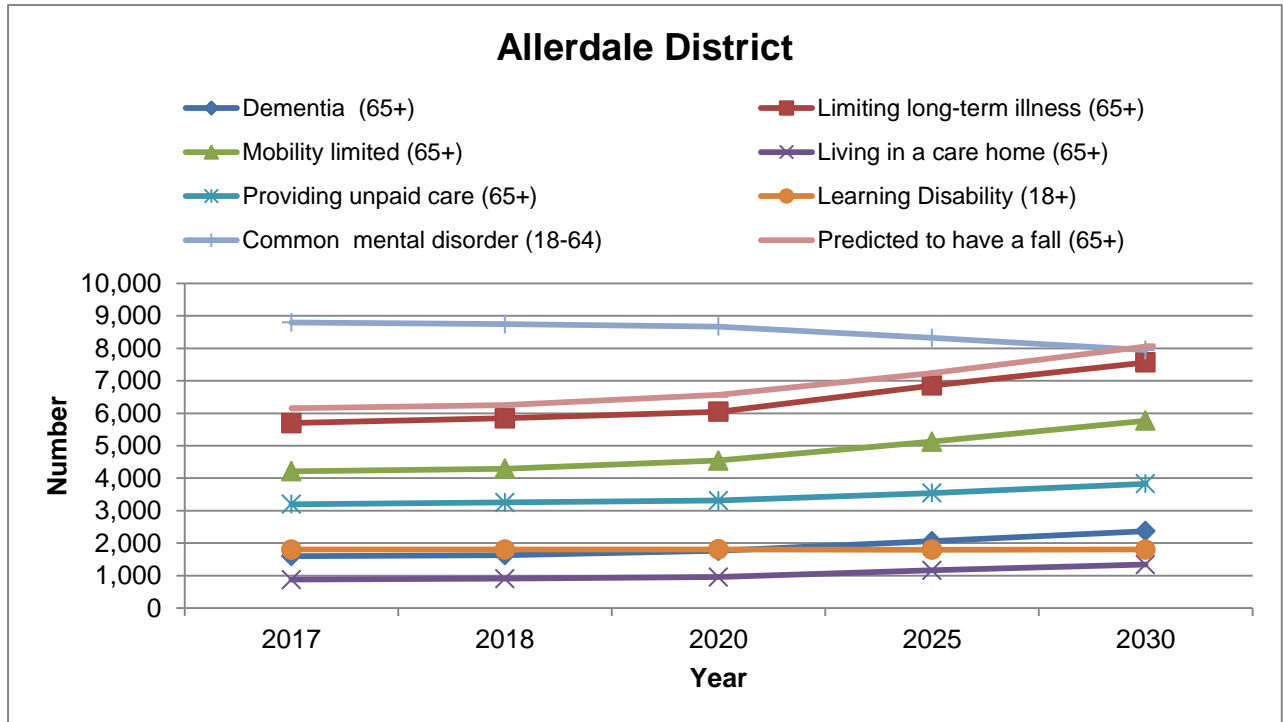
Table 14: Numbers & rates (per 1,000 GP population) of referrals to mental health services, 2015-16

	<i>Total referrals</i>		<i>Admitted</i>		<i>Only Non-Admitted</i>		<i>No Care</i>	
	<i>Number</i>	<i>Rate</i>	<i>Number</i>	<i>Rate</i>	<i>Number</i>	<i>Rate</i>	<i>Number</i>	<i>Rate</i>
Keswick & Solway ICC	1,626	40.0	33	0.8	673	16.5	313	7.7
North Cumbria	16,378	50.7	457	1.4	7,355	22.8	3,297	10.2
Cumbria	26,915	51.5	884	1.7	12,349	23.7	5,492	10.5

Source: Cumbria Partnership NHS Foundation Trust

Health Projections

Figure 4: Health projections: number of residents with a health condition, Allerdale District, 2017 – 2030



Source: Projecting Older Peoples Population Information (POPPI) <http://www.poppi.org.uk/>; and Projecting Adult Needs and Service Information System (PANSI) <http://www.pansi.org.uk/> [N.B health projections are determined by projected population figures only]

Table 15: Health projections: number of residents with a health condition, Allerdale District, 2017 - 2030

	2017	2018	2020	2025	2030
Dementia (65+)	1,603	1,630	1,762	2,058	2,371
Limiting long-term illness (65+)	5,696	5,844	6,049	6,859	7,567
Mobility limited (65+)	4,215	4,291	4,546	5,126	5,772
Living in a care home (65+)	877	905	953	1,162	1,340
Providing unpaid care (65+)	3,196	3,252	3,314	3,541	3,827
Learning disability (18+)	1,805	1,805	1,809	1,797	1,801
Common mental disorder (18-64)	8,798	8,746	8,669	8,320	7,946
Predicted to have a fall (65+)	6,151	6,257	6,565	7,240	8,061
Predicted to be admitted to hospital as a result of falls (65+)	481	497	521	610	666

Source: Projecting Older Peoples Population Information (POPPI) <http://www.poppi.org.uk/> ; and Projecting Adult Needs and Service Information System (PANSI) <http://www.pansi.org.uk/>

Falls

Table 16: Number and rate (per 1,000) of falls call-outs per year; average over period: April 2013 to March 2016

	<i>Number</i>		<i>Rate per 1,000</i>	
	<i>Keswick & Solway ICC</i>	<i>Cumbria</i>	<i>Keswick & Solway ICC</i>	<i>Cumbria</i>
Number of falls call outs (yearly average)	430	7,074	11.8	14.2

Source: Trauma and Injury Intelligence Group (TIIG)/North West Ambulance Service [based on the call out location, not the patient address]

Further information

Further information relating to each indicator for all ICCs, Cumbria and England (where available), including how calculations have been made can be found in the supporting ICC Workbook here: <https://www.cumbriaobservatory.org.uk/health-social-care/health-social-care-further-information/>

Joint Strategic Needs Assessment:

<http://www.cumbriaobservatory.org.uk/health/JSNA/2015/homepage.asp>

It is intended that these profiles will be updated on an annual basis; and will be further developed to include additional sources of data.