

Deprivation Analysis

Cumbria

Aim

To identify the most deprived areas within Cumbria in order to inform the targeting of support for the most vulnerable communities within the county.

Conclusions & Recommendations

Based on the evidence presented within this report, the most deprived areas of Cumbria are:

- Moss Bay, Moorclose and Ewanrigg (Maryport) within Allerdale;
- Central, Hindpool, Barrow Island, Ormsgill and Risedale within Barrow-in-Furness;
- Upperby, Botcherby and Belle Vue within Carlisle;
- Sandwith, Mirehouse, Harbour and Cleator Moor South within Copeland.

The Indices of Multiple Deprivation (IMD) 2010:

The IMD were produced by the DCLG in 2010 to consider the unmet needs of small areas, known as Lower Super Output Areas (LSOAs), caused by a lack of resources of across seven domains:

- Income;
- Employment;
- Health and Disability;
- Education Skills and Training;
- Barriers to Housing and Services;
- Living Environment; and
- Crime.

Cumbria has 29 communities that rank within the 10% most deprived of areas in England; these communities are all located within Allerdale, Barrow-in-Furness, Copeland and Carlisle. None of the Cumbrian communities that rank within the 10% most deprived nationally are found within Eden or South Lakeland. Figure 1 lists the 29 communities (LSOAs) that rank within the 10% most deprived of areas in England. LSOAs colour coded by district and the ward that each LSOA is located in is also provided.

Figure 1:

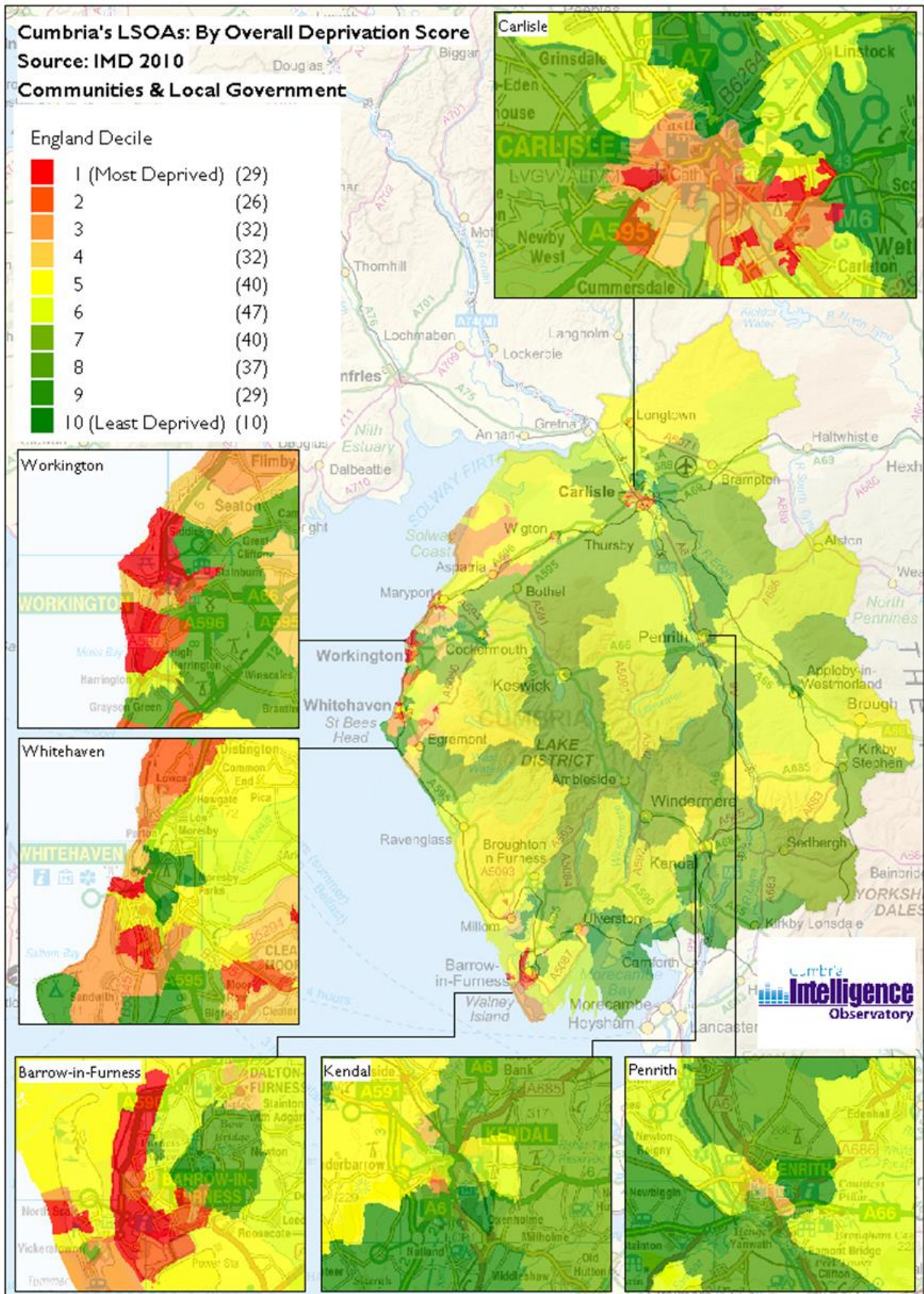
| LSOA | Ward Name | Overall IMD SCORE (Higher = More Deprived) |
|------------------------|---------------|--|
| Barrow-in-Furness 008C | Central | 70.58 |
| Barrow-in-Furness 004C | Ormsgill | 70.11 |
| Barrow-in-Furness 008A | Central | 69.98 |
| Allerdale 009C | Moss Bay | 65.45 |
| Copeland 005F | Sandwith | 65.23 |
| Barrow-in-Furness 007A | Central | 65.1 |
| Barrow-in-Furness 004A | Hindpool | 64.88 |
| Barrow-in-Furness 010B | Barrow Island | 60.85 |
| Carlisle 009A | Belle Vue | 58.46 |

| | | |
|------------------------|--------------------|-------|
| Allerdale 009B | Moss Bay | 56.02 |
| Carlisle 011A | Botcherby | 55.59 |
| Carlisle 011F | Upperby | 55.54 |
| Allerdale 005B | Ewanrigg | 55.33 |
| Barrow-in-Furness 008E | Hindpool | 55.23 |
| Barrow-in-Furness 008B | Central | 54.65 |
| Barrow-in-Furness 008D | Hindpool | 54.4 |
| Copeland 005D | Mirehouse | 53.86 |
| Copeland 002B | Harbour | 50.66 |
| Allerdale 008C | St. Michael's | 50.5 |
| Carlisle 011C | Botcherby | 50.22 |
| Copeland 004F | Cleator Moor South | 49.36 |
| Barrow-in-Furness 004D | Ormsgill | 49.26 |
| Allerdale 009A | Moss Bay | 49.16 |
| Carlisle 012E | Upperby | 48.16 |
| Copeland 004H | Frizington | 47.5 |
| Barrow-in-Furness 007B | Newbarns | 46.21 |
| Barrow-in-Furness 007E | Risedale | 46.18 |
| Allerdale 005A | Ellenborough | 45.35 |
| Allerdale 010C | Moorclose | 44.77 |

Source: Department for Communities and Local Government (DCLG) IMD 2010.

Figure 2 plots each LSOA in the county shaded according to their overall deprivation scores; areas shaded in red represent communities that are in the 10% most deprived of areas in England, while areas shaded in dark green represent communities that are in the 10% least deprived of areas in England.

Figure 2:



Alternative Measures of Deprivation

As the most recent IMD was published in 2010, many of the datasets used to calculate the figures have been superseded. As an updated IMD is not due for release until summer 2015, a number of more recent alternative deprivation measures have been identified below to cross check with the Cumbrian communities identified by the IMD as most deprived.

ACORN Socio-Economic Profiling (2014): ACORN is a socio-economic profiling tool which has been developed by the company CACI and is subscribed to by the Cumbria Intelligence Observatory. ACORN uses information gathered from a number of administrative sources to classify each postcode in Great Britain (GB) as belonging to one of five socio-economic categories.

Paycheck Annual Household Income (2014): The Paycheck dataset is a modelled index of annual household income which has been developed by the company CACI and is subscribed to by the Cumbria Intelligence Observatory.

Child Poverty (2012): The Children in Low-Income Families Local Measure produced by HMRC shows the proportion of children living in families in receipt of out-of-work (means-tested) benefits or in receipt of tax credits where their reported income is less than 60 per cent of UK median income. This measure provides a broad proxy for relative low-income child poverty as set out in the Child Poverty Act 2010.

Unemployment (December 2014): The Office for National Statistics (ONS) produces monthly Job Seekers Allowance (JSA) Claimant Rates which express the number of JSA claimants resident in an area as a percentage of the population aged 16-64 resident in that area.

Life Expectancy (2008-2012): The ONS produces annual life expectancy figures which express life expectancy at birth for males and females.

Day to Day Activities Limited (2011): The 2011 Census asked the question: "Are your day-to-day activities limited because of a health problem or disability which has lasted, or is expected to last, at least 12 months"?

General Health (2011): The 2011 Census also asked the question: "How is your health in general"?

Figure 3 presents the 12 wards in Cumbria that rank as most deprived in the county for each of the above alternative measures of deprivation. Wards are colour coded by district.

Figure 3: Alternative Measures of Deprivation: Cumbria:

| Rank (1=Most Deprived Ward in Cumbria) | % Persons - Category 5 - Urban Adversity | % Households - Income Less Than £10k | % of All Children in Poverty | Job Seekers Allowance (JSA) - Claimant Rate | Life expectancy at birth for males (years) | Life expectancy at birth for females (years) | % Persons - Day-to-day activities limited | % Persons - Bad or very bad health |
|---|--|--------------------------------------|------------------------------|---|--|--|---|------------------------------------|
| | 2014 | 2014 | 2012 | December 2014 | 2008-2012 | 2008-2012 | 2011 | 2011 |
| 1 | Central | Hindpool | Central | Barrow Island | Central | Central | Penrith Pategill | Central |
| 2 | Hindpool | Moss Bay | Sandwith | Central | Hindpool | Moss Bay | Hawcoat | Hindpool |
| 3 | Barrow Island | Central | Hindpool | Hindpool | Castle | Mirehouse | Central | Barrow Island |
| 4 | Castle | Sandwith | Moss Bay | Ewanrigg | Upperby | Sandwith | Harbour | Moss Bay |
| 5 | Moss Bay | Moorclose | Upperby | Moss Bay | Netherhall | Botcherby | Walney North | Harbour |
| 6 | Risedale | Appleby (Appleby) | Barrow Island | Risedale | Mirehouse | Kendal Highgate | Hindpool | Risedale |
| 7 | Ormsgill | Ewanrigg | Mirehouse | Harbour | Kendal Highgate | Belle Vue | Grange North | Ewanrigg |
| 8 | Sandwith | Barrow Island | Ewanrigg | Sandwith | St Aidans | Moorclose | Barrow Island | Walney North |
| 9 | St Aidans | Penrith Pategill | Moorclose | Moorclose | Barrow Island | Ewanrigg | Ulverston Central | Penrith Pategill |
| 10 | Currock | Upperby | Risedale | Ormsgill | Moss Bay | Castle | Grange South | Ormsgill |
| 11 | Denton Holme | Morton | Botcherby | St Michael's | Moorclose | Cleator Moor South | Moss Bay | Mirehouse |
| 12 | Moorclose | St Michael's | Ormsgill | Netherhall | Cleator Moor South | Netherhall | Morton | Clifton |
| District Colour Key: | | | | | | | | |
| | Allerdale | Barrow-in-Furness | Carlisle | Copeland | Eden | South Lakeland | | |

As with the IMD, the vast majority of the wards ranking as most deprived in Cumbria were located within Barrow-in-Furness, Allerdale, Copeland and Carlisle.

Central and Moss Bay wards stand out as being amongst the most deprived areas of Cumbria both in relation to the IMD and all of the eight alternative measures of deprivation.

Hindpool, Barrow Island, Moorclose, Sandwith, Ewanrigg, Ormsgill, Mirehouse, Risedale, Upperby, Harbour, Botcherby, Cleator Moor South and Belle Vue wards rank amongst the most deprived in the county in relation to the IMD and at least one of the eight alternative measures of deprivation.

While St. Michael's, Frizington, Newbarns and Ellenborough wards rank amongst the most deprived in the county in relation to the IMD, they do not feature amongst the most deprived for any alternative measures of deprivation.

There are a number of wards that rank amongst the most deprived for a small number of alternative measures of deprivation without ranking amongst the most deprived in the county in relation to the IMD. However, none of these wards appear consistently within the most deprived across the alternative measures.

Conclusions & Recommendations

Based on the evidence presented within this report, the most deprived areas of Cumbria are:

- Central (Barrow-in-Furness);
- Moss Bay (Allerdale);
- Hindpool (Barrow-in-Furness);
- Barrow Island (Barrow-in-Furness);
- Moorclose (Allerdale);
- Sandwith (Copeland);
- Ewanrigg (Allerdale);
- Ormsgill (Barrow-in-Furness);
- Mirehouse (Copeland);
- Risedale (Barrow-in-Furness);
- Upperby (Carlisle);
- Harbour (Copeland).
- Botcherby (Carlisle);
- Cleator Moor South (Copeland); and
- Belle Vue (Carlisle).

Further Information

Cumbria Atlas:

<http://www.cumbriaobservatory.org.uk/Atlas/CumbriaAtlas.asp>

The Cumbria Atlas enables users to explore ward and LSOA level statistics, with national, county, county and urban area comparisons in a user-friendly format combining maps, tables and charts.

Key Contacts

Rebecca Raw

Senior Research, Information & Intelligence Officer, Cumbria County Council

Email: rebecca.raw@cumbria.gov.uk

Tel: 07827 826434