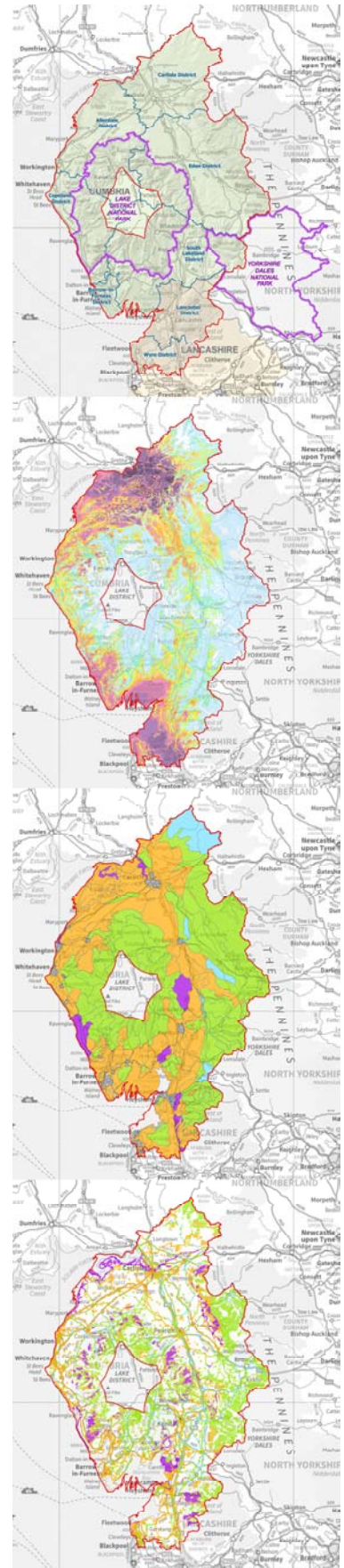


# Cumbria County Council Cumulative Impacts of Vertical Infrastructure: Appendix 4 LCA Tables & Maps

WYG/A072895-1/October 2014





## Document Control

Document: LCA Tables & Maps  
Project: Cumulative Impacts of Vertical Infrastructure  
Client: Cumbria County Council  
Job Number: A072895-1  
File Origin: w:\A072000-A072999\A072895-1 - Cumbria CC Landscape\A072895-1 CIVI\LCA Tables\Assessment tables 2014\_10\_28\A072895-1 CIVI LCA Tables cover FINAL 2014\_10\_31.docx

### Versions

Revision:	V2 Final	
Date:	31 October 2014	
Prepared by	Checked by	Approved By
E. Jones CMLI, M. O'Connor CMLI, T. Phillips MSc	M. O'Connor CMLI, t. Phillips MSc	M. O'Connor CMLI
Description of Revision	Finalised, formatted for issue	



## WYG

5<sup>th</sup> Floor Longcross Court  
47 Newport Road  
Cardiff CF24 0AD  
E: [planning.cardiff@wyg.com](mailto:planning.cardiff@wyg.com)  
[www.wyg.com](http://www.wyg.com)

This report has been prepared by WYG for **Cumbria County Council** and their partners.

All photographs copyright Cumbria County Council; all other images copyright WYG, except as indicated.

Ordnance Survey data reproduced by permission of Ordnance Survey on behalf of the Controller of Her Majesty's Stationery Office. © Crown copyright and dataset right 2014. All rights reserved. WYG Environment Planning Transport Limited 2014. License no.: AR 1000 17603.

© WYG Environment Planning Transport Limited Registered in England No. 3050297. October 2014

## Document navigation

Part 1 – Key Findings & Guidance

Part 2 – The Assessment

Appendix 1 - GIS Technical Report

Appendix 2 - Book of Maps

Appendix 3 - Ground Truthing

**Appendix 4 - Landscape Character Assessment Tables**







## Contents

- 1 Introduction
- 2 The landscape character assessment tables:
  - Cumbria Landscape Character Types and Sub-types
  - Lancashire Landscape Character Areas
  - Lake District National Park Areas of Distinct Landscape Character
  - Yorkshire Dales National Park Landscape Character Areas
  - Solway Coast AONB Landscape Character Areas
  - Forest of Bowland AONB Landscape Character Areas



# 1. Introduction

## 1.1 The outputs from the CIVI Study

1.1.1 A suite of reports, maps and associated tabulated information was produced in the course of the Study. This document is Appendix 4 Landscape Character Assessment Tables. Landscape character information was collated from the assessments carried out by each of the authorities within the study area, which has been summarised in a consistent tabulated format under headings for each landscape area of:

- Overview,
- Key characteristics,
- Sensitivities in relation to vertical structures, and
- Guidance in relation to vertical structures..

1.1.2 The other documents comprise:

### Part 1 Key Findings & Guidance

Summarises how the assessment was carried out and the findings of the assessment and; provides general guidance to users of the assessment and a step-wise process for appraising proposals for other developments involving vertical infrastructure elements and their cumulative effects.

### Part 2 The Assessment

Provides the background to the study, the details of the assessment methodology and how it was derived and carried out, and sets out the details of the findings of the assessed.

### Appendix 1 GIS Technical Report

Provides information about the GIS at the heart of the Study and which was fundamental to the assessment; details the data collected, the analyses and techniques employed to inform the assessment, and guidance for using the CIVI datasets

### Appendix 2 Book of Maps

A set of 145 maps, generated from each stage of the Study, from mapping the study area extents and the vertical infrastructure whose cumulative effects were assessed, through mapping the outputs of each of the assessment stages, to maps of the findings of the overall significance of cumulative landscape and visual effects.

### Appendix 3 Ground Truthing

The details of the ground truthing exercise, with tabulated information for each of the 52 selected viewpoints accompanied by photographs and location maps.

### 1.2 The Landscape Character Assessment Tables

- 1.2.1 For this Study, the “landscape receptors” are the landscape areas defined from analysis of the LCAs that have been carried out by the various authorities in the study area, based upon landscape type and sub-type definitions and identified landscape character areas.
- 1.2.2 Linked to the character assessments were sets of guidance for the landscape, including indicators of the types of development that would be acceptable in the area or intrusive on its character. This information was collated under the ‘Guidance in relation to vertical structures’ heading within the tables. The available information varied for each assessment: the Cumbria assessments included details on the appropriate scale of wind energy development for the landscape area and guidelines in relation to climate change, natural features, cultural features, development, access and recreation. The Lancashire study provided guidance on the scale of wind energy development that may be appropriate to each character area; the LDNP study, Forest of Bowland AONB study and the Solway Coast AONB study included guidelines for managing landscape change; and the YDNP study did not include any specific guidance. In the case of the YDNP, where appropriate, suitable guidance has been added. Only guidance in relation to vertical infrastructure was extracted from these studies to inform this assessment.
- 1.2.3 Each landscape area is a geographically distinct area of landscape. Where several areas were defined as the same landscape sub-type, as in the Cumbria landscape character assessment, the individual areas have been identified separately, and each given a unique identifying code in the GIS. They are set out in the following tables, with location maps, and the assessment results given for each area by scale of vertical infrastructure:
- The **sensitivity** to the different scales of vertical infrastructure;
  - The **magnitude** of change at each scale;
  - The resultant **significance** of existing cumulative effects on the landscape in each area.