

Population Density

Mid-2016

Key Issues

- Cumbria is England's 2nd largest county and is much less densely populated than the national average;
- Population density varies across Cumbria's six districts from 25 people per km sq. in Eden to 863 people per km sq. in Barrow-in-Furness;
- Allerdale was the only Cumbrian district to become less densely populated during the workday. Inversely, Carlisle, Copeland and Barrow-in-Furness became more densely populated during the workday;
- All of the above statistics vary considerably across Cumbria's wards and LSOAs.

Population Density

Figure 1 presents the population density of England & Wales, Cumbria and districts.

Figure 1:

	Land Area (Km Sq.)	Usual Resident Population (Persons)	Usual Resident Population Density (Persons Per Km Sq.)
England & Wales	151,046	58,381,217	387
Cumbria	6,767	497,900	74
Allerdale	1,242	97,000	78
Barrow-in-Furness	78	67,300	863
Carlisle	1,039	108,400	104
Copeland	732	69,300	95
Eden	2,142	52,600	25
South Lakeland	1,534	103,300	67

Source: Office for National Statistics (ONS), Mid-2016 Population Estimates.

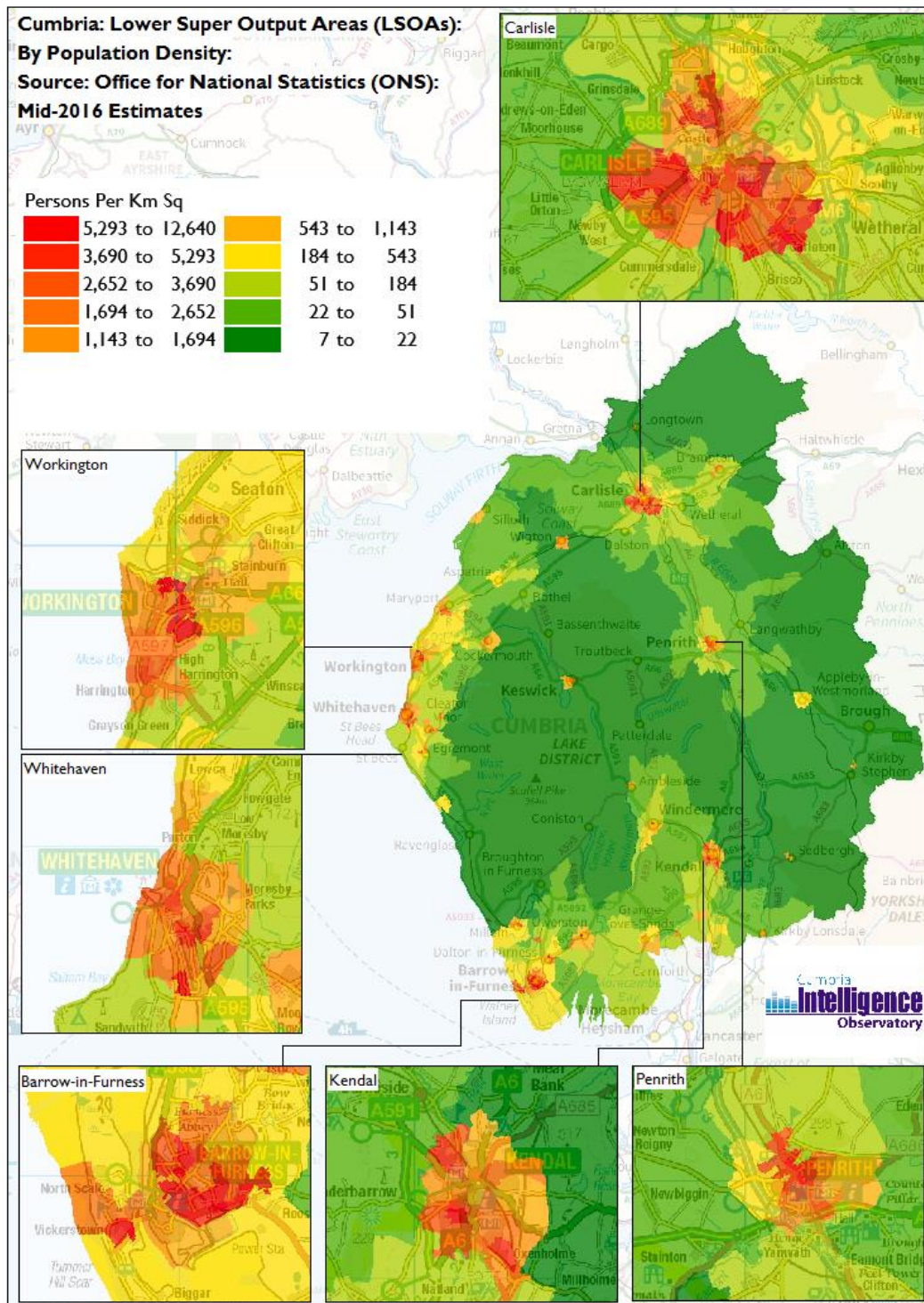
Cumbria is England's second largest county and covers an area of 6,767 km sq. Cumbria's usual resident population was estimated at 497,900 persons at mid-2016, giving an average population density of 74 people per km sq. Cumbria is the least densely populated English county and much less densely populated than the national average (England & Wales 387 people per km sq.).

Population density varies considerably across Cumbria's six districts; ranging from 25 people per km sq. in Eden to 863 people per km sq. in Barrow-in-Furness. Furthermore, Eden is the least densely populated district amongst all 348 local authority districts in England & Wales, while South Lakeland ranks 11th least densely populated.

Variation in population density within the county's 166 electoral wards is even greater; ranging from 8 people per km sq. in Crummock ward (Allerdale) to 6,371 people per km sq.

in Risedale ward (Barrow-in-Furness). Of the 8,297 electoral wards in England & Wales, Crummock ranks 18th least densely populated, while 38 of Cumbria's wards fall within the 3% least densely populated wards nationally. Lower Super Output Areas (LSOAs) are a set of geographies designed specifically for statistical purposes. Figure 2 plots population density across Cumbria's 321 LSOAs.

Figure 2:



(c) Crown Copyright and Database Right, 2017 Ordnance Survey Licence Number 100019596

As well as providing a count of the usual resident population, the 2011 Census also provided an alternative 'workday population' count reflecting the location of the population during the usual working day. The 2011 Census workday population for an area was defined as all usual residents aged 16 and above who were in employment and whose workplace was in the area, and all other usual residents of any age who were not in employment but were resident in the area. People who worked mainly at or from home or who did not have a fixed place of work were included in the area of their usual residence. It should be noted that as the Census took place in March 2011, figures do not account for seasonal workers.

Cumbria's 2011 Census workday population was just 0.1% greater than the county's usual resident population, while Cumbria's 2011 Census workday population and usual resident population densities were equal (both 74 persons per km sq.). Figure 3 presents 2011 Census workday and usual resident population densities for Cumbria and districts.

Figure 3: 2011 Census Populations & Population Density:

	Usual Resident Population (Persons)	Workday Population (Persons)	Usual Resident Population Density (Persons Per KM SQ.)	Workday Population Density (Persons Per KM SQ.)
Cumbria	499,900	503,200	74	74
Allerdale	96,400	90,800	78	73
Barrow-in-Furness	69,100	69,100	886	887
Carlisle	107,500	112,700	103	108
Copeland	70,600	72,500	96	99
Eden	52,600	54,000	25	25
South Lakeland	103,700	104,000	68	68

Source: Office for National Statistics (ONS), 2011 Census

Of Cumbria's districts, Allerdale was the only district to become less densely populated during the workday. Inversely, Carlisle, Copeland and Barrow-in-Furness became more densely populated during the workday. The variation in the workday population density of Cumbria's wards was extremely large; ranging from 6 people per km sq. in Copeland's Ennerdale ward to 14,120 people per km sq. in Barrow-in-Furness's Central ward. Figure 4 maps the workday population density of Cumbria's LSOAs. It is important to note that 2011 Census workday population data for LSOAs does not include workers traveling in from Scotland and so may underestimate the workday populations of some LSOAs, particularly those in Carlisle.

Figure 4:

