

## Carlisle Station Gateway and Citadels

# Public Consultation: Wednesday 18 September - Wednesday 9 October 2019

### The Story so Far

In July this year, the Leaders of the Borderlands Councils and UK and Scottish Government Ministers signed an agreement setting out the framework, projects and programmes that are included in the Borderlands Inclusive Growth Deal. This has secured a £394.5 million investment package for projects in our region.

One of these projects is 'Carlisle Station Gateway and Citadels'. It aims to create a new high-profile gateway development for Carlisle centred around the Railway Station, the Citadel buildings and Caldew Riverside. It aims to boost economic prosperity by attracting people to live, study and work in the area.

The first phase of the project will be the improvements at Carlisle Railway Station.

The second phase will be focused on the historic Citadels area to establish the site as a focal point for higher education, business and cultural uses. Working with the University of Cumbria and other key local stakeholders, Cumbria County Council and Carlisle City Council are currently exploring development options for the regeneration of the site.

The UK Government has allocated £15 million of funding through the Borderlands Inclusive Growth Deal for the first phase of work at Carlisle Railway Station. The receipt of this funding will depend on value for money being demonstrated through a business case, which is now being progressed.



## Why are we talking to you?

Whether you are a passenger or visitor using Carlisle Railway Station or you live or work locally, we know that just like us you'll want to make the best of the station and its surroundings. We care about, and are ambitious for, our city and are therefore progressing with the preparation of a business case to secure the Borderlands investment to support the improvement of Carlisle Railway Station.

By improving the Railway Station and its facilities, we want to encourage visitors to come again, help young people to stay, make the station work better for the public, and stimulate investment in Carlisle.

To help us develop options for improving the station, we would like you to tell us what you think and what you need. Your insight as customers or neighbours of the station will be invaluable to help us ensure we design the right scheme for Carlisle Railway Station. A public consultation will take place between Wednesday 18 September and Wednesday 9 October 2019.

This project is being developed jointly by Carlisle City Council and Cumbria County Council working with Network Rail and Cumbria LEP as key partners. We will also be working closely with the new West Coast Partnership rail franchise operator from December 2019 onwards.

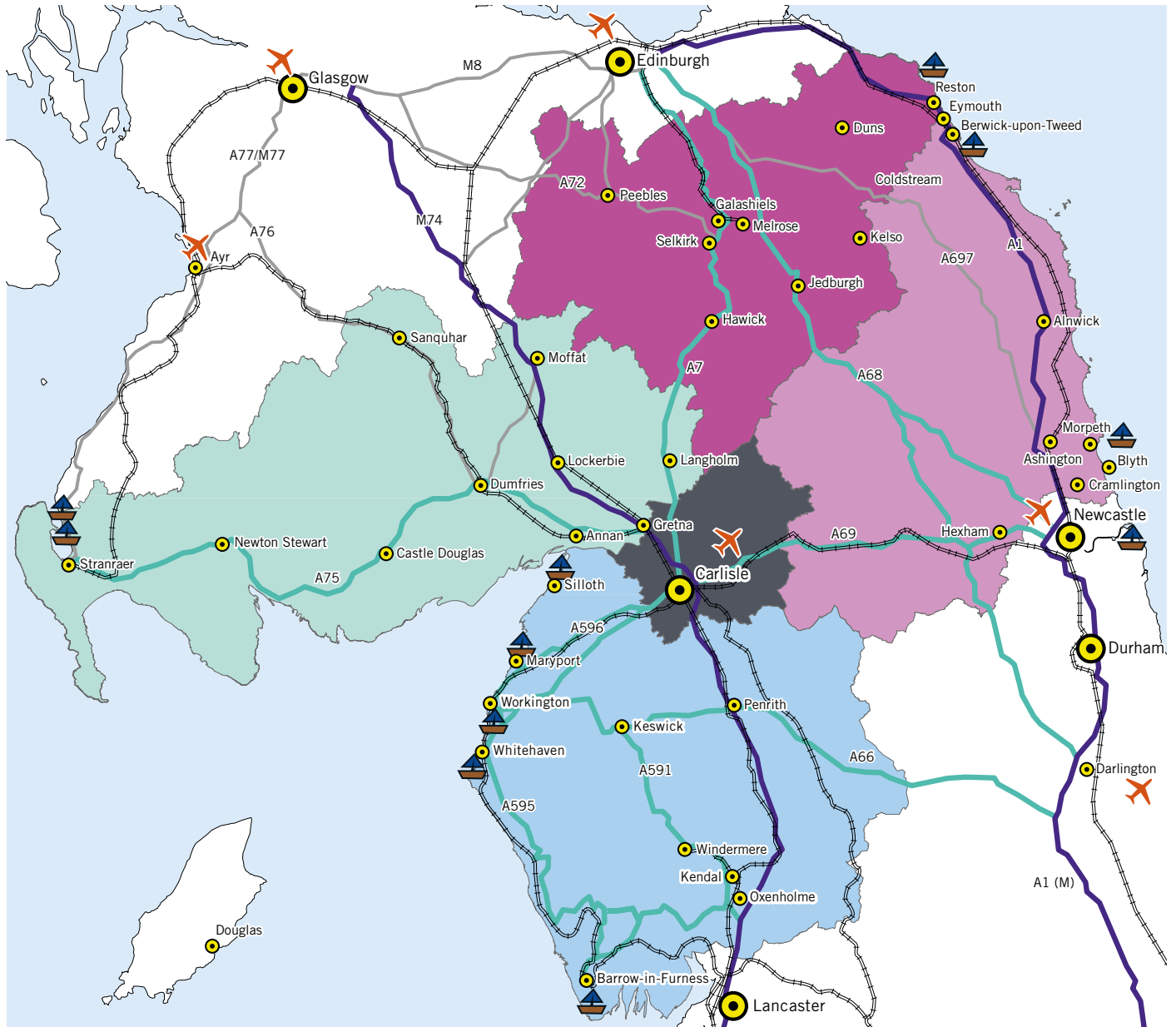
## Background

Carlisle is a city with a population of more than 108,000 and attracts people from across the Borderlands region and beyond. It acts as a regional hub for leisure, retail, employment and education for individuals and businesses across the Borderlands. Its location on the M6 and on many significant railway lines allows the city to act as a strategic gateway to the wider Borderlands region.

Carlisle Railway Station, located in the city centre, is a key part of the national rail network. It accommodates more than two million passengers every year and acts as a major interchange for the entire Borderlands region providing access to branch-line services from the West Coast Mainline to the Cumbrian Coast, Tyne Valley, Settle to Carlisle and Glasgow and South Western lines.

We plan to improve connectivity and access for Carlisle and the Borderlands. By improving access, shops and cafés, facilities and onward travel options at Carlisle Railway Station, it will boost the appeal of the city centre and also support passenger growth.

# Borderlands Transport Links



## LEGEND

### Settlements

- City
- Settlement

### Airports / Sea Ports

- Airport
- Sea Port

### Roads

- Major Roads
- Other Route
- Potential Priority Route

### Railways

- Active

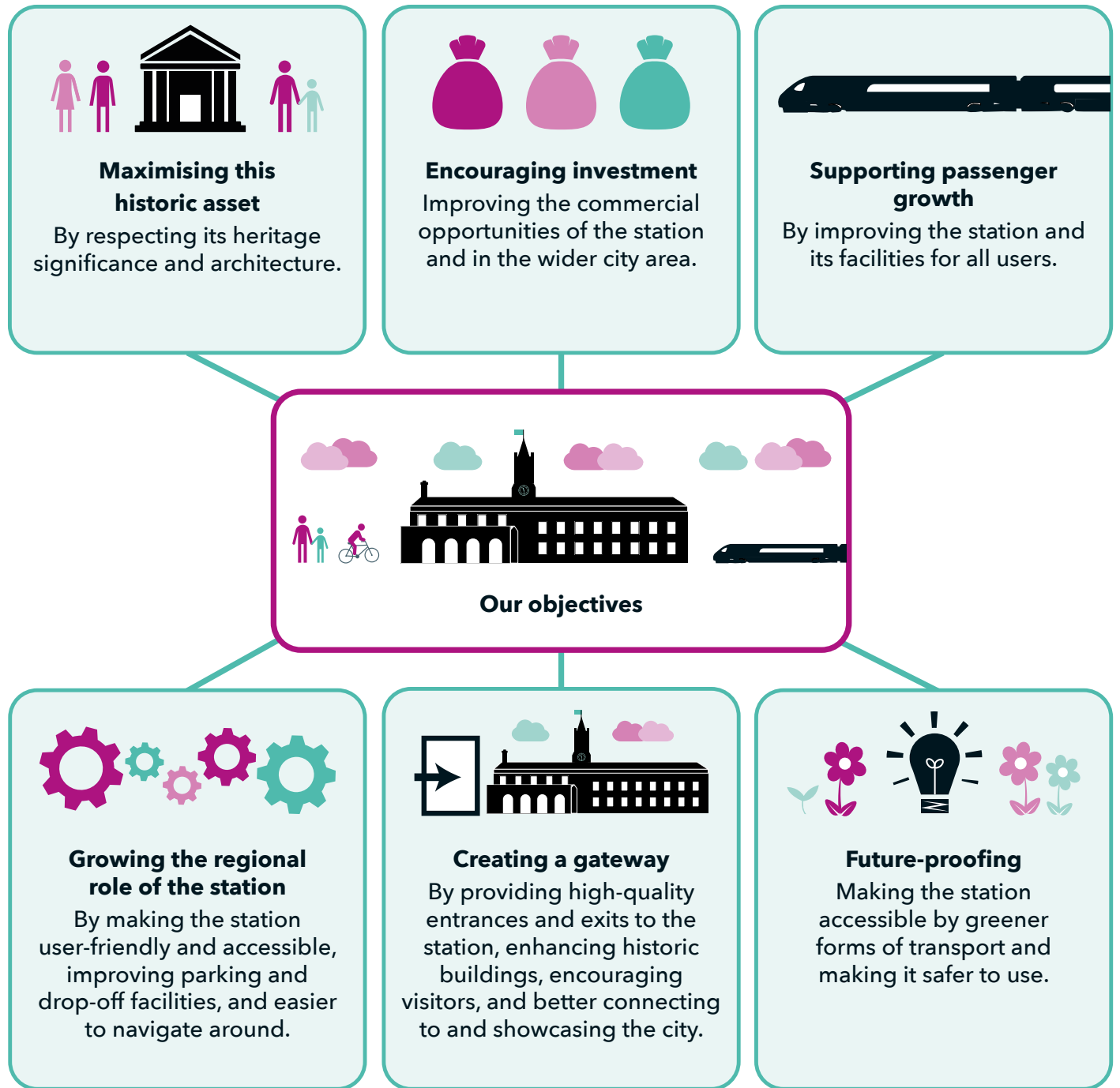
### Name

- Carlisle District (part of Cumbria)
- Cumbria (exe Carlisle District)
- Dumfries and Galloway
- Northumberland
- Scottish Borders
- UK Boundary

# Objectives

We have developed a set of objectives for Carlisle Railway Station.

Let us know what you think.



## Issues and Opportunities

We aim to improve Carlisle Railway Station to enhance the arrival areas of Court Square and the southern station entrance, provide improved car parking facilities, enhanced retail opportunities (shops, cafés etc) and prepare for future rail service improvements to provide better overall connectivity and more activity at the station.

For consultation purposes, we have divided the Carlisle Railway Station area into four parts with different issues and opportunities.



### KEY



Court Square



Station Entry  
and Interior



South of  
Station, Car Park  
and Access



Junction and Route  
Improvements



Proposed area  
for improvements

## Court Square

### What are the issues here?

- ❖ Problems with congestion and access to the station.
- ❖ Difficult to get to the current car park.
- ❖ Too many cars and pedestrians both trying to use the area at the same time.
- ❖ A poor-quality and cluttered environment that creates a poor first impression of the city.



### What are the opportunities?

- ❖ Enhancing the appearance and accessibility of Court Square to improve the experience of people using the station or arriving in the city.
- ❖ The potential for retail outlets facing Court Square to provide more shops and cafés as part of a city square.

## Station Entry and Interior

### What are the issues here?

- ❖ The experience of arriving in the station can be underwhelming, and there is not enough space in the entrance area for passengers to pass through or to queue for/collect tickets.
- ❖ The station facilities are not user-friendly and many spaces inside the station are not used to their full potential.
- ❖ The station would benefit from more shops and cafés.



### What are the opportunities?

- ❖ Improving first impressions of the station and 'gateway' to the city through better design or more space, and rearranging facilities.
- ❖ New and better spaces for shops could be provided, and we could consider making better use of the archways under the station.

## South of Station, Car Park and Access

### What are the issues here?

- ❖ Not enough car parking for current or future users of the station.
- ❖ Poor access into the Southern entrance of the station via Collier Lane.
- ❖ Southern entrance is underutilised.
- ❖ Poor quality environment.

### What are the opportunities?

- ❖ Create a southern entrance to the station, which maximises its potential.
- ❖ Develop a new/improved access to the station via James Street.
- ❖ Provision of more parking on the former Pools site.
- ❖ Opportunities to have all the parking on one site.
- ❖ Better drop-off and pick-up facilities and improved rail replacement provision.
- ❖ Improved access to the station via greener forms of transport and provision of electric charging points.



## Junction and Route Improvements

### What are the issues here?

- ❖ Improvements are needed to surrounding streets and junction if some of the other ideas are to happen.
- ❖ Improvements are required to help people to get to, and around the station more easily.
- ❖ Pedestrian/cycle routes between the city centre and the station are not direct and involve crossing busy roads.

### What are the opportunities?

- ❖ We think the following junctions/routes may need to be improved to enable the south entrance to the station to be maximised, as well as to improve access to the station more generally:
    - James Street/Currock Street/Water Street.
    - Currock Street/Crown Street roundabouts.
    - James Street/Nelson Bridge/Victoria Viaduct.
- Botchergate A6/Crown Street.
  - Crown Street/Lancaster Street.
  - King Street/Lancaster Street.
  - King Street/Botchergate.
  - English Street/Court Square Brow.



## Next Steps

Our plans to improve Carlisle Railway Station are in the early stages of development. Your views and ideas will help us shape our plans as they progress, to make sure we design a scheme that fits the needs of the station's neighbours and customers, the city of Carlisle and the wider Borderlands area.

We will come back to the public with designs for a scheme later in the year, as part of a formal public consultation. The results of this formal consultation will be published on our dedicated webpage [cumbria.gov.uk/CSGC](http://cumbria.gov.uk/CSGC), where you can also sign-up for email updates.

The next steps following the end of this consultation will be to:

- ✦ Analyse your responses and summarise in a short report.
- ✦ Develop options to improve the station in response to what you tell us in this consultation.
- ✦ Come back to you with designs as part of the formal public consultation on the scheme.
- ✦ Fine-tune and finalise the scheme following your feedback.
- ✦ Prepare an Outline Business Case to submit for Government approval.
- ✦ Start work on the future phases of the project, including the Citadels scheme.



## How can I find out more?

You can respond to the consultation in a number of ways:

### Online

Have your say at [cumbria.gov.uk/CSGC](http://cumbria.gov.uk/CSGC) between Wednesday 18 September and Wednesday 9 October 2019.

### Attend the public consultation events

These will be held on Friday 20 September and Saturday 21 September, 8am - 5pm, each day at Carlisle Railway Station and Friday 27 September and Saturday 28 September, 9am - 5pm, each day at The Lanes Shopping Centre. A display will also be in place throughout the consultation in Carlisle Railway Station.

