

Cumbria Local Area Agreement

2008 - 2011



CUMBRIA STRATEGIC PARTNERSHIP
THE PARTNERSHIP VOICE FOR CUMBRIA

Contents

p4-5	1 Introduction
p6-7	2 Developing the LAA 2008 - 2011
p8-9	3 What our LAA will achieve
p10-23	4 Proposed LAA Indicators and Targets (Designated)
p24-27	5 Proposed LAA Indicators and Targets (Local)
p28-33	6 Statutory Education and Early Years Indicators and Targets
p34-39	7 Legacy (Stretch) Indicators and Targets from 2007 - 2010 LAA



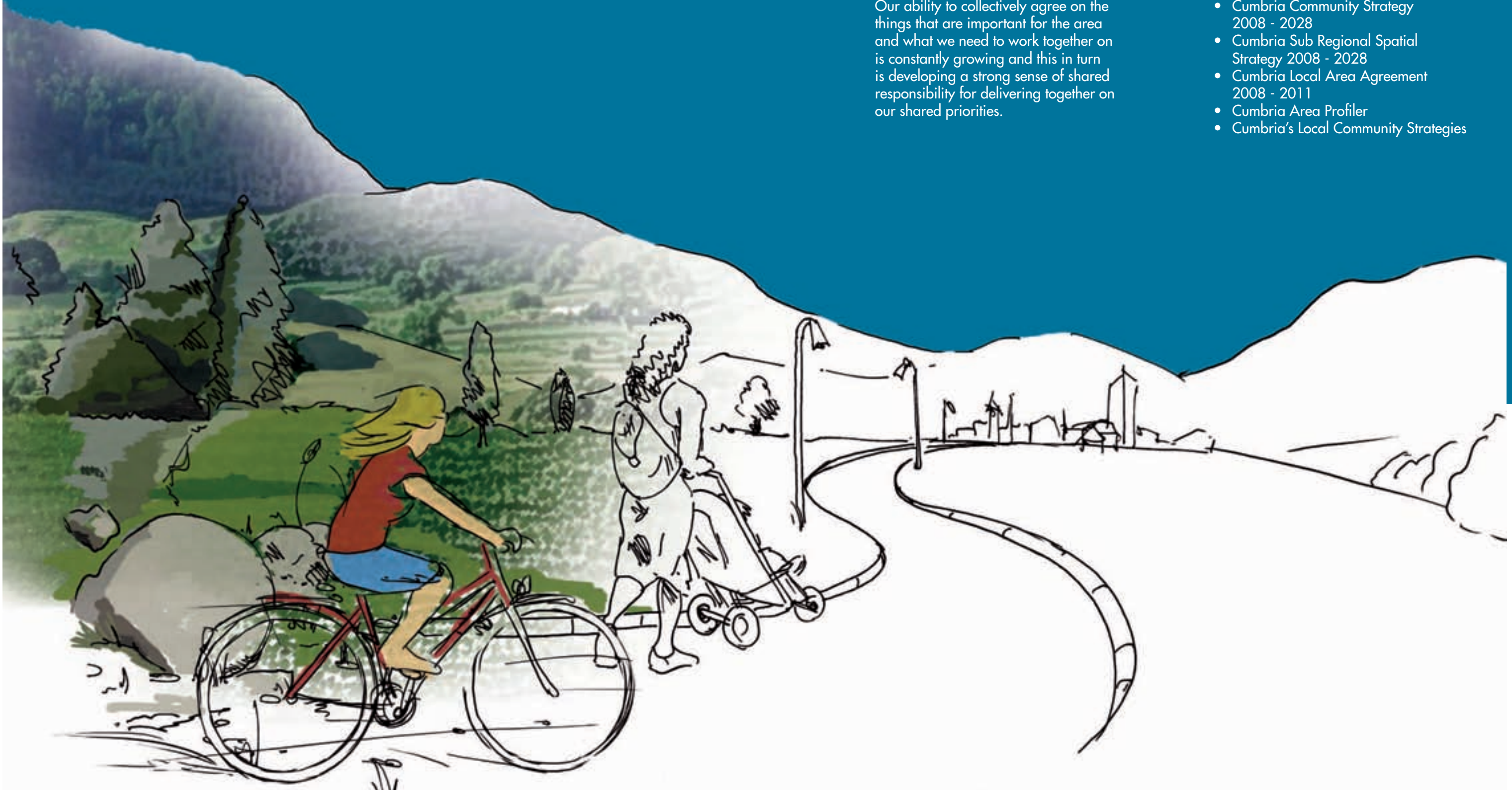
1 Introduction

1.1 This is the second Local Area Agreement (LAA) for Cumbria. It highlights the issues that are important for Cumbria and what we need to work on collectively to improve over the next three years.

1.2 Each of the indicators, baselines and targets set out in the document have been negotiated between Partners and Government Office North West and signifies another major step forward in partnership working within the county. Our ability to collectively agree on the things that are important for the area and what we need to work together on is constantly growing and this in turn is developing a strong sense of shared responsibility for delivering together on our shared priorities.

1.3 The 2008 - 2011 Local Area Agreement is part of a suite of documents, all intended to address different issues within Cumbria, but with inextricable links to each other. These documents include:

- Cumbria Community Strategy 2008 - 2028
- Cumbria Sub Regional Spatial Strategy 2008 - 2028
- Cumbria Local Area Agreement 2008 - 2011
- Cumbria Area Profiler
- Cumbria's Local Community Strategies



2 Developing the LAA

2.1 The Cumbria Story of Place is set out in the Cumbria Community Strategy (page 18).

2.2 The Story of Place provided us with an opportunity to consider again what the key priorities are for Cumbria. These two documents, along with the county's first LAA, have provided the foundation stones for our 2008 - 2011 LAA.

2.3 The Community Strategy and Story of Place have been developed using our evidence base which comprises performance data, trend and comparator information and survey information from the public. In addition to this elected members and senior officers from organisations across the county have contributed to discussions about our priorities through a range of opportunities including the various "Shaping the LAA events"; discussions at Cumbria Local Authority Strategic Board (CLASB) and the Cumbria Strategic Partnership (CSP) Executive.

2.4 The documents have been shaped through extensive consultation with public, private and 3rd sector partners throughout Cumbria and the documents have been checked against sustainability and equality impact frameworks. The proposed priorities, indicators and targets included in this document have also been formally considered by the county council.

2.5 The detailed work on the proposed content of the LAA has been co-ordinated by the Thematic Partnerships of the CSP. These Partnerships have worked together to ensure that priorities are cross cutting; avoid the thematic partnership silos; and focus on developing "spearhead indicators" for inclusion in the LAA; behind which a basket of other indicators will lie (outside of the LAA document) to support the issues we aim to address.

2.6 We have listened to our communities and elected members in all localities and will use specific locality based information when developing actions.



3 What our LAA will achieve

- 3.1 Cumbria's Community Strategy sets out the partnership aspirations for the county over the next twenty years. It states that:

Cumbria will be a place where we work together to ... energise ...

... safe, strong and inclusive communities

... health and well-being throughout life

... a sustainable and prosperous economy

... effective connections between people and places

... world class environmental quality

- 3.2 The proposed LAA indicators have been selected to support these outcomes. We are classing them as our "spearhead indicators" that we believe will drive forward performance on a wider range of indicators and issues than the technical wording relates to.

- 3.3 We have been keen to ensure that the LAA adds value to delivery of wider outcomes in Cumbria and have used a range of criteria to help with the selection of indicators. In particular, this means that:

- Some indicators relevant to Cumbria are not within the LAA, but will feature in the processes to support delivery of the Community Strategy vision. They are longer term in nature and cannot be delivered within the three years of the LAA (for example life expectancy and higher wage rates in rural areas).
- We have chosen indicators to act as spearhead indicators with other indicators grouped in baskets outside of the LAA to support delivery.

- In an area like Cumbria we clearly wish to use the LAA and Community Strategy processes to tackle inequalities and reduce gaps in performance – be they geographical (for example caused by deprivation in Barrow, West Cumbria and Carlisle; or caused by rural issues and barriers within Eden) or focused on Communities of Interest (for example Children Looked After or people with learning disabilities). However the national indicator set does not always reflect targets for inequalities. Hence few of the targets in the LAA go below the spatial level of the county and in a wide range of areas we will want to develop targets and targeted action to address this.

- 3.4 Delivery of the priorities and targets set out in this LAA is supported by the shared governance framework agreed by partners across the county in spring 2007. Support will be given to partners in developing and delivering the targets set out in the agreement through delivery planning processes that will underpin the ongoing performance management of the Local Area Agreement. This will provide lead agencies within delivery cluster groups with support around:

- Financial Planning;
- Performance Management and Data Quality;
- Risk Management;
- Action Planning.

4 Proposed LAA Indicators and Targets

(Designated)

(w) – this denotes indicators, relevant to tackling worklessness, provisionally selected – this basket of indicators has the potential to attract a greater share of Working Neighbourhoods Fund reward. These are currently subject to negotiation.

Proposed LAA Indicators and Targets (Designated)					
Indicator(s), including those from national indicator set (shown with a *)	Baseline (2006/07 unless otherwise indicated)	LAA Improvement Targets			Partners who have signed-up to the target and any which are acting as lead partner/s (shown with a *)
		08/09	09/10	10/11	
Priority Outcome: Reduce worklessness					
NI 153 Working age people claiming out of work benefits in the worst performing neighbourhoods* (W)	32.3% (May 2007)	31.3% (-1%)	30.3% (-1%)	29.3% (-1%)	Jobcentre Plus*, Allerdale Borough Council, Barrow Borough Council, Carlisle City Council, Copeland Borough Council, Cumbria County Council, Derwent & Solway Housing Association, Cumbria Rural Enterprise Agency, Furness Enterprise, Cumbria Vision
NI 146 Adults with learning disabilities in employment* (W)	10% (120) (2007/08)	12% (145)	14% (168)	16% (192) (cumulative total)	Cumbria County Council* Job Centre Plus, Oaklea Trust, West House, Cumbria Care Workstep, Cumbria Partnership Trust
Proposed LAA Indicators and Targets (Designated)					
Indicator(s), including those from national indicator set (shown with a *)	Baseline (2006/07 unless otherwise indicated)	LAA Improvement Targets			Partners who have signed-up to the target and any which are acting as lead partner/s (shown with a *)
		08/09	09/10	10/11	
Priority Outcome: Encourage existing businesses to grow					
NI 171 New business registration rate*	To be established in Autumn 2008 ¹				Cumbria Vision*
Priority Outcome: Improve skills throughout Cumbria					
NI 163 Proportion of population aged 19-64 for males and 19-59 for females qualified to at least Level 2 or higher* (W)	70.6% (2006 Annual Population Survey) ²	74.32%	76.18%	78.04%	Learning & Skills Council Cumbria*, Cumbria Further Education Providers, Cumbria County Council, Cumbria Vision
NI 165 Proportion of population aged 19-64 for males and 19-59 for females qualified to at least Level 4 or higher *	25%	26.2%	27.4%	28.6%	University of Cumbria*, Learning & Skills Council Cumbria ³
NI 106 Young people from low income backgrounds progressing to Higher Education*	To be established in Summer 08 ⁴				Cumbria County Council*, University of Cumbria, Allerdale Borough Council, Barrow Borough Council, Carlisle City Council, Copeland Borough Council, Eden District Council, South Lakeland District Council, Cumbria Primary Care Trust, Connexions Cumbria, Learning & Skills Council Cumbria, Cumbria Constabulary, National Probation Cumbria

1 - Targets will be negotiated when baseline established. 2 - Applies to 2006/07 financial year 3 - Additional partners to be confirmed 4 - Baseline to be established when data is available

4 Proposed LAA Indicators and Targets

(Designated)

Proposed LAA Indicators and Targets (Designated)					
Indicator(s), including those from national indicator set (shown with a *)	Baseline (2006/07 unless otherwise indicated)	LAA Improvement Targets			Partners who have signed-up to the target and any which are acting as lead partner/s (shown with a *)
		08/09	09/10	10/11	
Priority Outcome: Support Children & Young People on the pathway to success					
NI 110 Young people's participation in positive activities ^{5*}	To be established late 2008 / early 2009				Cumbria County Council*, Allerdale Borough Council, Barrow Borough Council, Carlisle City Council, Copeland Borough Council, Eden District Council, South Lakeland District Council, Cumbria Primary Care Trust, Connexions Cumbria, Learning & Skills Council Cumbria, Cumbria Constabulary, National Probation Cumbria
NI 117 16 to 18 year olds who are not in education, training and employment (NEET)* (W)	5.2%	5.3%	4.8%	4.8%	Connexions Cumbria*, Allerdale Borough Council, Barrow Borough Council, Carlisle City Council, Copeland Borough Council, Cumbria County Council, Eden District Council, South Lakeland District Council, Cumbria Primary Care Trust, Learning & Skills Council Cumbria, Cumbria Constabulary, National Probation Cumbria
NI 19 Rate of proven re-offending by young offenders*	To be established by 31st March 2009 ⁶				Cumbria County Council*, Allerdale Borough Council, Barrow Borough Council, Carlisle City Council, Copeland Borough Council, Eden District Council, South Lakeland District Council, Cumbria Primary Care Trust, Connexions Cumbria, Learning & Skills Council Cumbria, Cumbria Constabulary, National Probation Cumbria

5 - Indicator to be measured by survey data - survey data expected late 2008 / early 2009 - targets to be negotiated when data available 6 - Targets will be negotiated when baseline established

Proposed LAA Indicators and Targets (Designated)					
Indicator(s), including those from national indicator set (shown with a *)	Baseline (2006/07 unless otherwise indicated)	LAA Improvement Targets			Partners who have signed-up to the target and any which are acting as lead partner/s (shown with a *)
		08/09	09/10	10/11	
Priority Outcome: Improve life expectancy					
NI 123 Stop smoking*	716 per 100,000 (based on average of years 2004 to 2007 - provided by Vital Signs) 547 per 100,000 ⁷ (2007/08) 2270 quitters achieved	764 per 100,000	760 per 100,000	731 per 100,000	Cumbria Primary Care Trust*, Cumbria County Council, Allerdale Borough Council, Barrow Borough Council, Carlisle City Council, Copeland Borough Council, Eden District Council, South Lakeland District Council, Healthy Schools, Connexions, Cumbria Partnership Trust
NI 39 Rate of Hospital Admissions per 100,000 for Alcohol Related*	1,702 per 100,000	1,914 per 100,000	2,001 per 100,000	2,072 per 100,000	Cumbria Primary Care Trust*, Cumbria Partnership Trust, Cumbria County Council, Cumbria Constabulary, Allerdale Borough Council, Barrow Borough Council, Carlisle City Council, Copeland Borough Council, Eden District Council, South Lakeland District Council

7 - Definition subject to change from 2009/10

4 Proposed LAA Indicators and Targets

(Designated)

Proposed LAA Indicators and Targets (Designated)					
Indicator(s), including those from national indicator set (shown with a *)	Baseline (2006/07 unless otherwise indicated)	LAA Improvement Targets			Partners who have signed-up to the target and any which are acting as lead partner/s (shown with a *)
		08/09	09/10	10/11	
NI 40 Number of drug users recorded as being in effective treatment*	1336 (2007/08 estimated) ⁸	4% increase on baseline 1389	6% increase on baseline 1417	8% increase on baseline 1446	Cumbria Primary Care Trust*, Cumbria County Council, Cumbria Constabulary, Connexions Cumbria, Cumbria Youth Offending Service, Probation Service
Priority Outcome: Increase choice and control for services users					
NI 130 Social Care clients receiving Self Directed Support per 100,000 population (Direct Payments and Individual Budgets)*	111 per 100,000 ⁹	530 per 100,000	1060 per 100,000	1863 per 100,000	Cumbria County Council*, Disability Association Carlisle and Eden, Cumbria Direct Payment Advice and Support, Cumbria ICT User Involvement Consortium, In Control, Furness Carers, West Cumbria Carers, Carlisle Carers, National Centre for Independent Living, Commission for Social Care Improvement, People First, Making Space, Cumbria Disability Network, Age Concern, Cumbria Mental Health Users Group, Cumbria Partnership Trust
<p>8 - The baseline for this indicator will be confirmed when finalised baseline data for 2007/08 is available in August 2008 - the targets will be given numerical values at that time.</p> <p>9 - Direct payments only – Individual budgets to be included from 2009</p>					
Proposed LAA Indicators and Targets (Designated)					
Indicator(s), including those from national indicator set (shown with a *)	Baseline (2006/07 unless otherwise indicated)	LAA Improvement Targets			Partners who have signed-up to the target and any which are acting as lead partner/s (shown with a *)
		08/09	09/10	10/11	
Priority Outcome: Further strengthen community empowerment					
NI 4 % of people who feel they can influence decisions in their locality*	To be established when place survey data available ¹⁰				Cumbria County Council*, Allerdale Borough Council, Barrow Borough Council, Carlisle City Council, Copeland Borough Council, Eden District Council, South Lakeland District Council, Cumbria Association of Local Councils, Cumbria Council for Voluntary Services Cumbria Primary Care Trust, Cumbria Constabulary, Youth Offending Service, Probation Service, Drug & Alcohol Action Team, Rural Forum, Voluntary Action Cumbria, Crown Prosecution Service
NI 5 Overall / general satisfaction with local area*	To be established when place survey data available ¹¹				Cumbria County Council*, Allerdale Borough Council, Barrow Borough Council, Carlisle City Council, Copeland Borough Council, Eden District Council, South Lakeland District Council, Cumbria Association of Local Councils, Cumbria Council for Voluntary Services Cumbria Primary Care Trust, Cumbria Constabulary, Youth Offending Service, Probation Service, Drug & Alcohol Action Team, Rural Forum, Voluntary Action Cumbria, Crown Prosecution Service
<p>10 - Targets will be negotiated when baseline established</p> <p>11 - Targets will be negotiated when baseline established</p>					

4 Proposed LAA Indicators and Targets

(Designated)

Proposed LAA Indicators and Targets (Designated)					
Indicator(s), including those from national indicator set (shown with a *)	Baseline (2006/07 unless otherwise indicated)	LAA Improvement Targets		Partners who have signed-up to the target and any which are acting as lead partner/s (shown with a *)	
		08/09	09/10		
NI 7 Environment for a thriving third sector*	22% ¹²	22%	24%	28%	Cumbria County Council*, Allerdale Borough Council, Barrow Borough Council, Carlisle City Council, Copeland Borough Council, Eden District Council, South Lakeland District Council, Cumbria Association of Local Councils, Cumbria Council for Voluntary Services Cumbria Primary Care Trust, Cumbria Constabulary, Youth Offending Service, Probation Service, Drug & Alcohol Action Team, Rural Forum, Voluntary Action Cumbria, Crown Prosecution Service
Priority Outcome: Improve respect and community cohesion					
NI 1 % of people who believe people from different backgrounds get on well together in their local area*	83%	84%	85%	87%	Cumbria County Council*, Allerdale Borough Council, Barrow Borough Council, Carlisle City Council, Copeland Borough Council, Eden District Council, South Lakeland District Council, Cumbria Association of Local Councils, Cumbria Council for Voluntary Services Cumbria Primary Care Trust, Cumbria Constabulary, Youth Offending Service, Probation Service, Drug & Alcohol Action Team, Rural Forum, Voluntary Action Cumbria, Crown Prosecution Service

12 - Indicative baseline estimate only from a pilot survey conducted nationally. More accurate figures will be available following the first wave of the national Cabinet Office Survey in the autumn. As a result these figures could change.

Proposed LAA Indicators and Targets (Designated)					
Indicator(s), including those from national indicator set (shown with a *)	Baseline (2006/07 unless otherwise indicated)	LAA Improvement Targets		Partners who have signed-up to the target and any which are acting as lead partner/s (shown with a *)	
		08/09	09/10		
Priority Outcome: Reduce crime and fear of crime					
NI 20 Assault with injury crime rate* ¹³	3584 7.22 per 1000 population (2007/08)	3405 6.86 Per 1000 population	3235 6.52 per 1000 population	3073 6.19 per 1000 population	Cumbria Constabulary*, Allerdale Borough Council, Barrow Borough Council, Carlisle City Council, Copeland Borough Council, Cumbria County Council* Eden District Council, South Lakeland District Council, Probation Service, Cumbria Fire & Rescue Service, Cumbria Police Authority, Cumbria Primary Care Trust, Voluntary Action Cumbria, Cumbria Association of Local Councils, Cumbria Council for Voluntary Services Crown Prosecution Service
NI 30 Re-offending rate of prolific and priority offenders*	-17%	-21% ¹⁴			Probation Service* Cumbria Constabulary, Allerdale Borough Council, Barrow Borough Council, Carlisle City Council, Copeland Borough Council, Cumbria County Council* Eden District Council, South Lakeland District Council, Cumbria Fire & Rescue Service, Cumbria Police Authority, Cumbria Primary Care Trust, Voluntary Action Cumbria, Cumbria Association of Local Councils, Cumbria Council for Voluntary Services Crown Prosecution Service

13 - 3 year targets have been provisionally agreed with targets for years 2 and 3 to be revised at the annual refresh 14 - This target is a conditional target, which may be adjusted once accurate baseline data has been provided by the Home Office. Targets for 2009/10 and 2010/11 will be agreed with GONW at the annual refresh.

4 Proposed LAA Indicators and Targets

(Designated)

Proposed LAA Indicators and Targets (Designated)					
Indicator(s), including those from national indicator set (shown with a *)	Baseline (2006/07 unless otherwise indicated)	LAA Improvement Targets		Partners who have signed-up to the target and any which are acting as lead partner/s (shown with a *)	
		08/09	09/10		10/11
NI 41 Perceptions of drunk or rowdy behaviour as a problem*	20% (2007 Best Value General User Satisfaction Survey)	19%	18%	16%	Cumbria County Council*, Cumbria Constabulary, Allerdale Borough Council, Barrow Borough Council, Carlisle City Council, Copeland Borough Council, Eden District Council, South Lakeland District Council, Probation Service, Cumbria Fire & Rescue Service, Cumbria Police Authority, Cumbria Primary Care Trust, Voluntary Action Cumbria, Cumbria Association of Local Councils, Cumbria Council for Voluntary Services Crown Prosecution Service
NI 32 Repeat incidents of domestic violence*	37.4% ¹⁵	33.8%			Probation Service*, Cumbria County Council, Cumbria Constabulary, Allerdale Borough Council, Barrow Borough Council, Carlisle City Council, Copeland Borough Council, Eden District Council, South Lakeland District Council, Cumbria Fire & Rescue Service, Cumbria Police Authority, Cumbria Primary Care Trust, Voluntary Action Cumbria, Cumbria Association of Local Councils, Cumbria Council for Voluntary Services Crown Prosecution Service

15 - The figures for the baseline and 2008/9 represent a proxy measure taken from current LAA stretch as recommended by GONW. Further targets will not be set until 2009-10

Proposed LAA Indicators and Targets (Designated)					
Indicator(s), including those from national indicator set (shown with a *)	Baseline (2006/07 unless otherwise indicated)	LAA Improvement Targets		Partners who have signed-up to the target and any which are acting as lead partner/s (shown with a *)	
		08/09	09/10		10/11
Priority Outcome: Improve the health and well being of Children					
NI 57 Children and young people's participation in high-quality PE and sport*	87% ¹⁶	90%	95%	98%	Cumbria County Council*, Allerdale Borough Council, Barrow Borough Council, Carlisle City Council, Copeland Borough Council, Eden District Council, South Lakeland District Council, Cumbria Primary Care Trust, Connexions Cumbria, Learning & Skills Council Cumbria, Cumbria Constabulary, National Probation Cumbria
NI 50 Emotional health of children*	To be established late 2008 / early 2009 ¹⁷				Cumbria County Council*, Allerdale Borough Council, Barrow Borough Council, Carlisle City Council, Copeland Borough Council, Eden District Council, South Lakeland District Council, Cumbria Primary Care Trust, Connexions Cumbria, Learning & Skills Council Cumbria, Cumbria Constabulary, National Probation Cumbria
NI 70 Hospital admissions caused by unintentional and deliberate injuries to children and young people*	To be established late 2008 / early 2009 ¹⁸				Cumbria Primary Care Trust*, Allerdale Borough Council, Barrow Borough Council, Carlisle City Council, Copeland Borough Council, Eden District Council, South Lakeland District Council, Cumbria County Council, Connexions Cumbria, Learning & Skills Council Cumbria, Cumbria Constabulary, National Probation Cumbria

16 - The baseline and targets will be renegotiated in 2009 on the basis of the final definition of the indicator

17 - Indicator to be measured by survey data - survey data expected late 2008 / early 2009 - targets to be negotiated when data available

18 - Targets will be negotiated once baseline established, as part of the refresh.

4 Proposed LAA Indicators and Targets

(Designated)

Proposed LAA Indicators and Targets (Designated)					
Indicator(s), including those from national indicator set (shown with a *)	Baseline (2006/07 unless otherwise indicated)	LAA Improvement Targets		Partners who have signed-up to the target and any which are acting as lead partner/s (shown with a *)	
		08/09	09/10		
NI 65 Percentage of children becoming the subject of a Child Protection Plan for a second or subsequent time*	13.8%	13.5%	13%	12.5%	Cumbria County Council*, Allerdale Borough Council, Barrow Borough Council, Carlisle City Council, Copeland Borough Council, Eden District Council, South Lakeland District Council, Cumbria Primary Care Trust, Connexions Cumbria, Learning & Skills Council Cumbria, Cumbria Constabulary, National Probation Cumbria
NI 112 Under 18 conception rate*	-16%	-33%	-41%	-50%	Cumbria County Council*, Allerdale Borough Council, Barrow Borough Council, Carlisle City Council, Copeland Borough Council, Eden District Council, South Lakeland District Council, Cumbria Primary Care Trust, Connexions Cumbria, Learning & Skills Council Cumbria, Cumbria Constabulary, National Probation Cumbria
Priority Outcome: Improve road safety					
NI 47 People killed or seriously injured in road traffic accidents*	363 ¹⁹ (2005 – 2007 average)	10.3% decrease (326)	3.5% decrease (315)	1.5% decrease (310)	Cumbria County Council*, Cumbria Constabulary, Cumbria Fire & Rescue Service, The Highways Agency, Capita Symonds, Cumbria Safety Cameras, Cumbria Chamber of Commerce, The Freight Transport Association, Primary Care Trust.
19 - Percentage decrease from previous 3 year-average is 9.6%					

Proposed LAA Indicators and Targets (Designated)					
Indicator(s), including those from national indicator set (shown with a *)	Baseline (2006/07 unless otherwise indicated)	LAA Improvement Targets		Partners who have signed-up to the target and any which are acting as lead partner/s (shown with a *)	
		08/09	09/10		
Priority Outcome: Improve sustainable access to services & facilities					
NI 175 Access to services and facilities by public transport, walking and cycling* ²⁰	91% (2007/08)	93%	94%	95%	Cumbria County Council*, Job Centre Plus, Cumbria Rural Enterprise Agency, Cumbria Tourist Board
NI 168 Principal roads where maintenance should be considered*	4% (2007/08)	4%	4%	4%	Cumbria County Council*, Amey, Capita
Priority Outcome: Provide balanced housing markets					
NI 154 Net additional homes provided*	1367 (2004-2007)	1796	1796	1796	Allerdale Borough Council*, Barrow Borough Council*, Carlisle City Council*, Copeland Borough Council*, Eden District Council*, Lake District National Park Authority*, South Lakeland District Council* ²¹
NI 155 Number of affordable homes delivered (gross)*	237 (2007/08)	260	300	350	Allerdale Borough Council*, Barrow Borough Council*, Carlisle City Council*, Copeland Borough Council*, Eden District Council*, Lake District National Park Authority* ²² , South Lakeland District Council*

20 - This is locally determined indicator, the NIS guidance states that the definition must follow that of the accessibility indicator written into the Cumbria Local Transport Plan. The indicator therefore considers the "percentage of rural households within 30mins of a key service centre by public transport"
 21 - District and Borough Councils, along with the Lake District National Park Authority, will lead delivery in their respective geographical areas. This is co-ordinated across the county through the Cumbria Planning Group
 22 - District and Borough Councils, along with the Lake District National Park Authority, will lead delivery in their respective geographical areas. This is co-ordinated across the county through the Cumbria Planning Group

4 Proposed LAA Indicators and Targets

(Designated)

Proposed LAA Indicators and Targets (Designated)

Indicator(s), including those from national indicator set (shown with a *)	Baseline (2006/07 unless otherwise indicated)	LAA Improvement Targets			Partners who have signed-up to the target and any which are acting as lead partner/s (shown with a *)
		08/09	09/10	10/11	
Priority Outcome: Maximise Cumbria's contribution to limiting climate change					
NI 186 Per capita reduction in CO2 emissions in the LA area*	11.3 tonnes	2.65% reduction (0.3 tonnes)	619% cumulative reduction (0.7 tonnes)	11.5% cumulative reduction (1.3 tonnes)	Cumbria County Council*, English Heritage, Forestry Commission, National Trust, Environment Agency, Natural England, Carlisle City Council, Lake District National Park Authority
Priority Outcome: Minimise waste and improve waste management					
NI 191 Residual household waste per household*	830kg (2007/08)	702kg	694kg	687kg	Allerdale Borough Council, Barrow Borough Council, Carlisle City Council, Copeland Borough Council, Cumbria County Council*, Eden District Council, South Lakeland District Council
Priority Outcome: Improve local biodiversity					
NI 197 Improved local biodiversity – proportion of local sites where positive conservation management has been or is being implemented*	To be established by 31st October 2008				Cumbria County Council*, English Heritage, National Trust, Forestry Commission, Environment Agency, South Lakeland District Council, Yorkshire Dales National Park Authority, Lake District National Park Authority, Cumbria Wildlife Trust, Natural England
Priority Outcome: Ensure high standards of street scene services and reduce the visual impact of litter and graffiti					
NI 195 Improved street and environmental cleanliness (levels of litter, detritus, graffiti and fly posting)*	Litter 5% Detritus 6% Graffiti 1% Fly posting 0% (2007/08)	5% 10% 1% 0%	5% 10% 1% 0%	5% 9% 1% 0%	Allerdale Borough Council*, Barrow Borough Council*, Carlisle City Council*, Copeland Borough Council*, Cumbria County Council*, Eden District Council*, South Lakeland District Council*



5 Proposed LAA Indicators and Targets (Local)

Proposed LAA Indicators and Targets (Local)					
Indicator(s), including those from national indicator set (shown with a *)	Baseline (2006/07 unless otherwise indicated)	LAA Improvement Targets		Partners who have signed-up to the target and any which are acting as lead partner/s (shown with a *)	
		08/09	09/10		10/11
Priority Outcome: Improve the health and well being of children					
LI 1 Reduce incidence of referrals to social care for child protection, repeat referrals and repeat incidence of abuse of children	41.7%	25%	22.5%	20%	Cumbria County Council*, Allerdale Borough Council, Barrow Borough Council, Carlisle City Council, Copeland Borough Council, Eden District Council, South Lakeland District Council, Cumbria Primary Care Trust, Connexions Cumbria, Learning & Skills Council Cumbria, Cumbria Constabulary, National Probation Cumbria
Priority Outcome: Protect and enhance the environment					
LI 2 % of conservation areas with up to date (within 5 years) character appraisals	To be established by Summer 2008 ²³				Lake District National Park Authority*, English Heritage
Priority Outcome: Increase cultural participation					
LI 3 (NI 11) Engagement in the arts* ²⁴	To be established by 30th November 2008				Cumbria County Council*, Culture Cumbria, Allerdale Borough Council, Barrow Borough Council, Carlisle City Council, Copeland Borough Council, Eden District Council, South Lakeland District Council, Arts Council for England
²³ - Targets will be set when baseline established ²⁴ - Agreed principle of a 3% target over 3 years based on the November baseline (when available)					
Proposed LAA Indicators and Targets (Local)					
Indicator(s), including those from national indicator set (shown with a *)	Baseline (2006/07 unless otherwise indicated)	LAA Improvement Targets		Partners who have signed-up to the target and any which are acting as lead partner/s (shown with a *)	
		08/09	09/10		10/11
Priority Outcome: Provide balanced housing markets					
LI 4 (NI 187) Tackling Fuel Poverty – % people receiving income based benefits living in homes with a low energy efficiency rating*	To be established by 31st March 2009 ²⁵				To be confirmed
Priority Outcome: Improve local biodiversity					
LI 5 Percentage of sites of special scientific interest in favourable / recovering condition	To be established by Summer 2008 ²⁶			95%	Natural England, Lake District National Park Authority*, Forestry Commission
Priority Outcome: Improve life expectancy					
LI 6 Reduce health inequalities between the Local Authority area and the England population by narrowing the gap in all age, all cause mortality in spearhead areas – targets for Carlisle and Barrow	Male Barrow – 838 Carlisle – 768 Female Barrow – 536 Carlisle – 529 (2007/08)	Male Barrow – 814 Carlisle – 751 Female Barrow – 525 Carlisle – 521	Male Barrow – 791 Carlisle – 735 Female Barrow – 514 Carlisle – 514	Male Barrow – 769 Carlisle – 719 Female Barrow – 503 Carlisle – 507	Cumbria Primary Care Trust*, Cumbria County Council, Barrow Borough Council, Carlisle City Council
²⁵ - Targets will be set and agreed once baseline established ²⁶ - Targets for 08/09 and 09/10 will be set when baseline established					

5 Proposed LAA Indicators and Targets (Local)

Proposed LAA Indicators and Targets (Local)					
Indicator(s), including those from national indicator set (shown with a *)	Baseline (2006/07 unless otherwise indicated)	LAA Improvement Targets			Partners who have signed-up to the target and any which are acting as lead partner/s (shown with a *)
		08/09	09/10	10/11	
LI 7 Reduce health inequalities within the local area in all age, all cause mortality – targets for Allerdale, Copeland, Eden and South Lakeland	Allerdale 850 Copeland 803 Eden 585 South Lakeland 654 (2007/08)	Allerdale 825 Copeland 772 Eden 574 South Lakeland 600	Allerdale 803 Copeland 743 Eden 565 South Lakeland 589	Allerdale 782 Copeland 716 Eden 557 South Lakeland 575	Cumbria Primary Care Trust*, Cumbria County Council, Allerdale Borough Council, Copeland Borough Council, Eden District Council, South Lakeland District Council
LI 10 Percentage of mother recorded as smoking on delivery	24%	20%	19%	18%	Cumbria Primary Care Trust*, Cumbria County Council
Priority Outcome: Increase choice and control for services users					
LI 8 Number of loans from library self help collection	1551 (2007/08)	1782	2178	2574	Cumbria County Council*, Cumbria Primary Care Trust, Cumbria Partnership Trust, Mind
LI 9 Increase the number of people with learning disabilities over 18 who have health action plans	40% (2007/08)	70%	90%	95%	Cumbria County Council*, Cumbria Partnerships Trust, Cumbria Primary Care Trust

27 - These targets represent a 3% annual increase

Proposed LAA Indicators and Targets (Local)					
Indicator(s), including those from national indicator set (shown with a *)	Baseline (2006/07 unless otherwise indicated)	LAA Improvement Targets			Partners who have signed-up to the target and any which are acting as lead partner/s (shown with a *)
		08/09	09/10	10/11	
LI 11 Number of people benefiting from Promoting Independence in Partnership with older people scheme	1428 (2007/08)	1600 ²⁷	1648	1697.44	Age Concern*, Alzhiemers Society, Carers Associations, Cumbria County Council, Cumbria Primary Care Trust
LI 12 Supporting peoples service users who have moved on in a planned way from temporary living arrangements. As measured by DCLG KP2(A)	361 (2007/08)	368 ²⁸	375	383	Cumbria County Council*, Allerdale Borough Council, Barrow Borough Council, Carlisle City Council, Copeland Borough Council, Eden District Council, South Lakeland District Council, Cumbria Primary Care Trust, Probation Service
LI 13 Numbers of people successfully claiming pensions credit and gateway to other entitlements	3114 (2007/08)	1950	2008	2108	Department of Works and Pensions*, Energy Efficiency Advice Centre, Age Concern
LI 14 Number of passengers making return journeys on community buses to access healthy pursuits	17072 (2007/08)	5% 17926	5% 18779	5% 19632	Cumbria County Council* Cumbria Community Transport

28 - These targets represent a 2% annual increase

6 Statutory Education and Early Years Indicators and Targets

Statutory Education and Early Years Indicators and Targets					
Indicator(s), including those from national indicator set (shown with a *)	Baseline (2006/07 unless otherwise indicated)	LAA Improvement Targets			Partners who have signed-up to the target and any which are acting as lead partner/s (shown with a *)
		08/09	09/10 ²⁹	10/11 ²⁹	
NI 72 Achievement of at least 78 points across the Early Years Foundation Stage with at least 6 in each of the scales in Personal Social and Emotional Development and Communication, Language and Literacy*	46%	54%			Cumbria County Council*, Allerdale Borough Council, Barrow Borough Council, Carlisle City Council, Copeland Borough Council, Eden District Council, South Lakeland District Council, Cumbria Primary Care Trust, Connexions Cumbria, Learning & Skills Council Cumbria, Cumbria Constabulary, National Probation Cumbria
NI 73 Achievement at level 4 or above in both English and Maths at Key Stage 2 (Threshold)*	75%	83%			Cumbria County Council*, Allerdale Borough Council, Barrow Borough Council, Carlisle City Council, Copeland Borough Council, Eden District Council, South Lakeland District Council, Cumbria Primary Care Trust, Connexions Cumbria, Learning & Skills Council Cumbria, Cumbria Constabulary, National Probation Cumbria
29 - Targets for 2009/10 and 2010/11 will be negotiated in early 2009 and 2010 respectively					
Statutory Education and Early Years Indicators and Targets					
Indicator(s), including those from national indicator set (shown with a *)	Baseline (2006/07 unless otherwise indicated)	LAA Improvement Targets			Partners who have signed-up to the target and any which are acting as lead partner/s (shown with a *)
		08/09	09/10 ²⁹	10/11 ²⁹	
NI 74 Achievement at level 5 or above in both English and Maths at Key Stage 3 (Threshold)*	69%	80%			Cumbria County Council*, Allerdale Borough Council, Barrow Borough Council, Carlisle City Council, Copeland Borough Council, Eden District Council, South Lakeland District Council, Cumbria Primary Care Trust, Connexions Cumbria, Learning & Skills Council Cumbria, Cumbria Constabulary, National Probation Cumbria
NI 75 Achievement of 5 or more A*-C grades at GCSE or equivalent including English and Maths (Threshold)*	45.7%	57%			Cumbria County Council*, Allerdale Borough Council, Barrow Borough Council, Carlisle City Council, Copeland Borough Council, Eden District Council, South Lakeland District Council, Cumbria Primary Care Trust, Connexions Cumbria, Learning & Skills Council Cumbria, Cumbria Constabulary, National Probation Cumbria
NI 83 Achievement at level 5 or above in Science at Key Stage 3*	75%	84%			Cumbria County Council*, Allerdale Borough Council, Barrow Borough Council, Carlisle City Council, Copeland Borough Council, Eden District Council, South Lakeland District Council, Cumbria Primary Care Trust, Connexions Cumbria, Learning & Skills Council Cumbria, Cumbria Constabulary, National Probation Cumbria
29 - Targets for 2009/10 and 2010/11 will be negotiated in early 2009 and 2010 respectively					

6 Statutory Education and Early Years Indicators and Targets

Statutory Education and Early Years Indicators and Targets					
Indicator(s), including those from national indicator set (shown with a *)	Baseline (2006/07 unless otherwise indicated)	LAA Improvement Targets			Partners who have signed-up to the target and any which are acting as lead partner/s (shown with a *)
		08/09	09/10 ²⁹	10/11 ²⁹	
NI 87 Secondary school persistent absence rate*	7%	6.3%	6%	5%	Cumbria County Council*, Allerdale Borough Council, Barrow Borough Council, Carlisle City Council, Copeland Borough Council, Eden District Council, South Lakeland District Council, Cumbria Primary Care Trust, Connexions Cumbria, Learning & Skills Council Cumbria, Cumbria Constabulary, National Probation Cumbria
NI 92 Narrowing the gap between the lowest achieving 20% in the Early Years Foundation Stage Profile and the rest*	35%	28%			Cumbria County Council*, Allerdale Borough Council, Barrow Borough Council, Carlisle City Council, Copeland Borough Council, Eden District Council, South Lakeland District Council, Cumbria Primary Care Trust, Connexions Cumbria, Learning & Skills Council Cumbria, Cumbria Constabulary, National Probation Cumbria
NI 93 Progression by 2 levels in English between Key Stage 1 and Key Stage 2*	83.7%	92%			Cumbria County Council*, Allerdale Borough Council, Barrow Borough Council, Carlisle City Council, Copeland Borough Council, Eden District Council, South Lakeland District Council, Cumbria Primary Care Trust, Connexions Cumbria, Learning & Skills Council Cumbria, Cumbria Constabulary, National Probation Cumbria

²⁹ - Targets for 2009/10 and 2010/11 will be negotiated in early 2009 and 2010 respectively

Statutory Education and Early Years Indicators and Targets					
Indicator(s), including those from national indicator set (shown with a *)	Baseline (2006/07 unless otherwise indicated)	LAA Improvement Targets			Partners who have signed-up to the target and any which are acting as lead partner/s (shown with a *)
		08/09	09/10 ²⁹	10/11 ²⁹	
NI 94 Progression by 2 levels in Maths between Key Stage 1 and Key Stage 2*	79%	91%			Cumbria County Council*, Allerdale Borough Council, Barrow Borough Council, Carlisle City Council, Copeland Borough Council, Eden District Council, South Lakeland District Council, Cumbria Primary Care Trust, Connexions Cumbria, Learning & Skills Council Cumbria, Cumbria Constabulary, National Probation Cumbria
NI 95 Progression by 2 levels in English between Key Stage 2 and Key Stage 3*	24.4%	40%			Cumbria County Council*, Allerdale Borough Council, Barrow Borough Council, Carlisle City Council, Copeland Borough Council, Eden District Council, South Lakeland District Council, Cumbria Primary Care Trust, Connexions Cumbria, Learning & Skills Council Cumbria, Cumbria Constabulary, National Probation Cumbria
NI 96 Progression by 2 levels in Maths between Key Stage 2 and Key Stage 3*	56%	72%			Cumbria County Council*, Allerdale Borough Council, Barrow Borough Council, Carlisle City Council, Copeland Borough Council, Eden District Council, South Lakeland District Council, Cumbria Primary Care Trust, Connexions Cumbria, Learning & Skills Council Cumbria, Cumbria Constabulary, National Probation Cumbria

²⁹ - Targets for 2009/10 and 2010/11 will be negotiated in early 2009 and 2010 respectively

6 Statutory Education and Early Years Indicators and Targets

Statutory Education and Early Years Indicators and Targets					
Indicator(s), including those from national indicator set (shown with a *)	Baseline (2006/07 unless otherwise indicated)	LAA Improvement Targets			Partners who have signed-up to the target and any which are acting as lead partner/s (shown with a *)
		07/08	08/09 ²⁹	09/10 ²⁹	
NI 97 Progression by 2 levels in English between Key Stage 3 and Key Stage 4*	53.9%	71%			Cumbria County Council*, Allerdale Borough Council, Barrow Borough Council, Carlisle City Council, Copeland Borough Council, Eden District Council, South Lakeland District Council, Cumbria Primary Care Trust, Connexions Cumbria, Learning & Skills Council Cumbria, Cumbria Constabulary, National Probation Cumbria
NI 98 Progression by 2 levels in Maths between Key Stage 3 and Key Stage 4*	27.4%	38%			Cumbria County Council*, Allerdale Borough Council, Barrow Borough Council, Carlisle City Council, Copeland Borough Council, Eden District Council, South Lakeland District Council, Cumbria Primary Care Trust, Connexions Cumbria, Learning & Skills Council Cumbria, Cumbria Constabulary, National Probation Cumbria
NI 99 Looked after children reaching level 4 in English at Key Stage 2*	61% (as of 30/09/07)	33%	50%	65%	Cumbria County Council*, Allerdale Borough Council, Barrow Borough Council, Carlisle City Council, Copeland Borough Council, Eden District Council, South Lakeland District Council, Cumbria Primary Care Trust, Connexions Cumbria, Learning & Skills Council Cumbria, Cumbria Constabulary, National Probation Cumbria

²⁹ - Targets for 2009/10 and 2010/11 will be negotiated in early 2009 and 2010 respectively

Statutory Education and Early Years Indicators and Targets					
Indicator(s), including those from national indicator set (shown with a *)	Baseline (2006/07 unless otherwise indicated)	LAA Improvement Targets			Partners who have signed-up to the target and any which are acting as lead partner/s (shown with a *)
		07/08	08/09	09/10	
NI 100 Looked after children reaching level 4 in Mathematics at key Stage 2*	54% (as of 30/09/07)	43%	63%	75%	Cumbria County Council*, Allerdale Borough Council, Barrow Borough Council, Carlisle City Council, Copeland Borough Council, Eden District Council, South Lakeland District Council, Cumbria Primary Care Trust, Connexions Cumbria, Learning & Skills Council Cumbria, Cumbria Constabulary, National Probation Cumbria
NI 101 Looked after children achieving 5 A*-C GCSEs (or equivalent) at Key Stage 4 (including English and Mathematics)*	18% (as of 30/09/07)	20%	12%	33%	Cumbria County Council*, Allerdale Borough Council, Barrow Borough Council, Carlisle City Council, Copeland Borough Council, Eden District Council, South Lakeland District Council, Cumbria Primary Care Trust, Connexions Cumbria, Learning & Skills Council Cumbria, Cumbria Constabulary, National Probation Cumbria

7 Legacy (Stretch) Indicators LAA 2007 - 2010

Legacy (Stretch) Indicators and Targets LAA 2007 - 2010

Indicator(s), including those from national indicator set (shown with a *)	Baseline (2006/07 unless otherwise indicated)	LAA Improvement Targets			Partners who have signed-up to the target and any which are acting as lead partner/s (shown with a *)
		07/08	08/09	09/10	
SI 1 Number of people who have been claiming incapacity benefit for at least 6 months helped by Cumbria County Council into sustained employment of at least 16 hours per week for 13 consecutive weeks or more as measured by local data	0 (2006/07)	No target	No target	Total across 3 years = 200 (stretched)	Cumbria County Council*
SI 2 16 to 18 year olds who are not in education training and employment (NEET)	6.7% (2005/06)	6.0% (unstretched) 5.8% (stretched)	5.7% (unstretched) 5.3% (stretched)	5.3% (unstretched) 4.8% (stretched)	Connexions Partnership*
SI 3 The number of supporting people service users who are supported to establish and maintain independent living aged 16 and over as measured by Communities and Local Government KPI A	4136 (2005/06)	4136 (unstretched) 4260 (stretched – 3% increase on the baseline)	4136 (unstretched) 4388 (stretched – 3% increase on 2007/08)	4136 (unstretched) 4520 (stretched – 3% increase on 2008/09)	Cumbria County Council*

Legacy (Stretch) Indicators and Targets LAA 2007 - 2010

Indicator(s), including those from national indicator set (shown with a *)	Baseline (2006/07 unless otherwise indicated)	LAA Improvement Targets			Partners who have signed-up to the target and any which are acting as lead partner/s (shown with a *)
		07/08	08/09	09/10	
SI 4 Average length of waiting time for major adaptations supplied via disabled facilities grant from assessment by occupational therapist to work beginning, as defined by CSCI self assessment survey guidance adult social care 2006 – 2007	44 weeks (2005/06)	42 weeks (unstretched) 39 weeks (stretched)	42 weeks (unstretched) 34 weeks (stretched)	42 weeks (unstretched) 29 weeks (stretched)	Cumbria Housing Group*
SI 5 The number of people who have set a quit date and who are still not smoking at 4 weeks	2744 (2005/06) Based on 3 year average from 2003 - 2006	2771 (unstretched – 1% increase on baseline figures) 2826 (stretched – 2% increase on unstretched figure)	2799 (unstretched – 1% increase on 2007/08 figure) 2882 (stretched – 2% increase on 2007/08 stretched figure)	2827 (unstretched – 1% increase on 2008/09 figure) 2940 (stretched – 2% increase on 2008/09 stretched figure)	Cumbria Primary Care Trust*

7 Legacy (Stretch) Indicators LAA 2007 - 2010

Legacy (Stretch) Indicators and Targets LAA 2007 - 2010

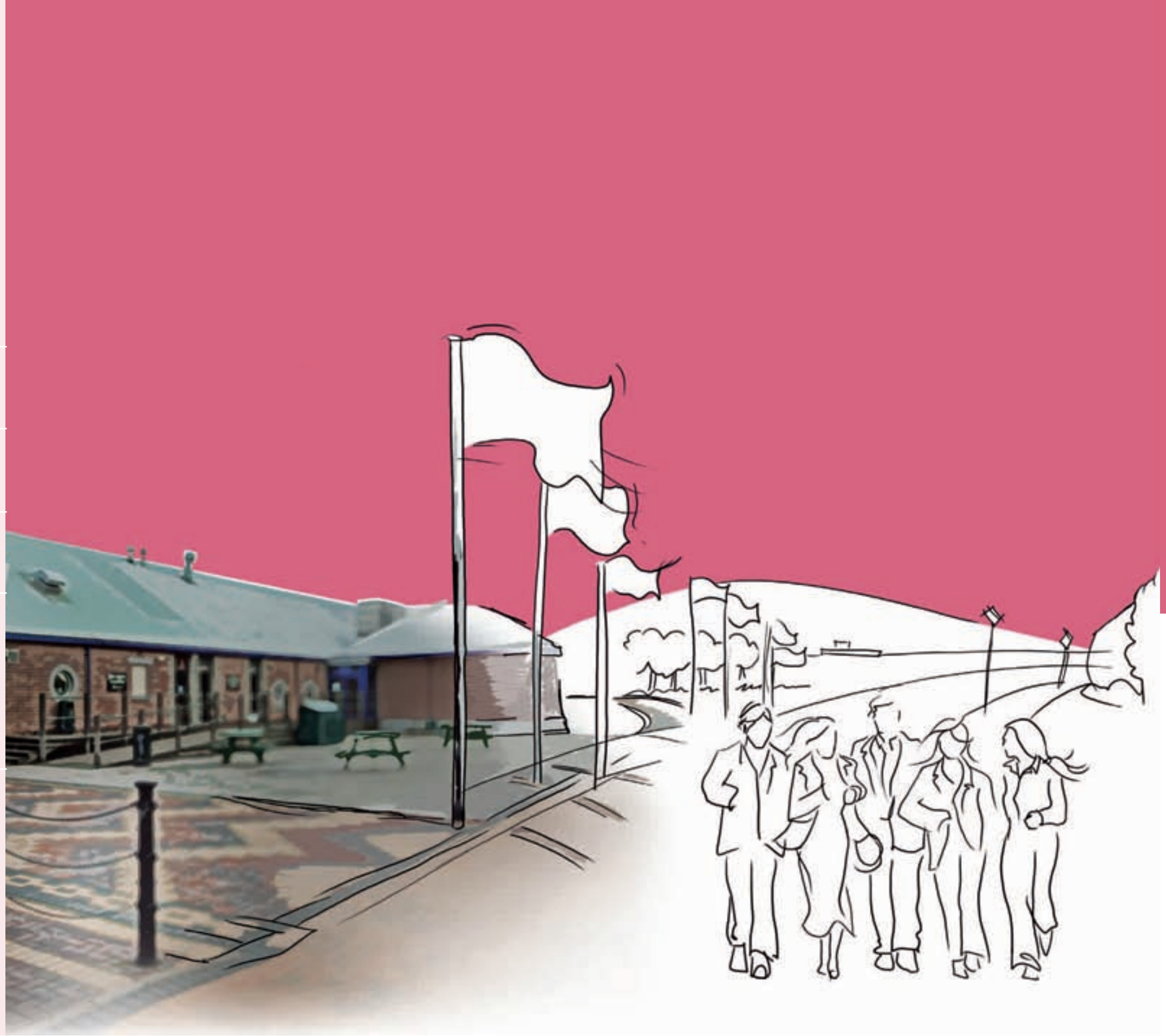
Indicator(s), including those from national indicator set (shown with a *)	Baseline (2006/07 unless otherwise indicated)	LAA Improvement Targets			Partners who have signed-up to the target and any which are acting as lead partner/s (shown with a *)
		07/08	08/09	09/10	
SI 6 Percentage of adult population (aged 16 or over) taking part in moderate intensity sport and recreation (including recreational walking) for 30 minutes 3 or more days per week, as measured by the Sport England Active People Survey 05-06	20.9% participation rate for Cumbria. (Sport England national Active People survey 2005/06)	20.9% (unstretched) 22.2% (stretched 1.33 percentage point increase on baseline)	20.9% (unstretched) 23.5% (stretched - 2.66 percentage point increase on 07/08)	20.9% (unstretched) 24.9% (stretched -4 percentage point increase on 08/09)	Cumbria County Council*
SI 7 The number of domestic violence incidents in Cumbria, as reported to Police	3900 (2005/06)	3998 (unstretched)	4096 (unstretched)	4194 (unstretched) 4485 (stretched)	Cumbria Constabulary / Domestic Violence Strategic Management Board (DVSMB)*
SI 8 Increase the % of convictions for domestic violence related offences	61.7% (2005/06)	6% (unstretched)	62.5% (unstretched)	63% (unstretched) 65% (stretched) at the end of three years	Cumbria Constabulary / Domestic Violence Strategic Management Board*
SI 9 The percentage of recorded domestic violence that are repeat incidents in the previous 12 months as reported to the police	37.4% (2005/06)	36.6% (unstretched)	35.8% (unstretched)	35% (unstretched) 32% (stretched)	Cumbria Constabulary / Domestic Violence Strategic Management Board*

Legacy (Stretch) Indicators and Targets LAA 2007 - 2010

Indicator(s), including those from national indicator set (shown with a *)	Baseline (2006/07 unless otherwise indicated)	LAA Improvement Targets			Partners who have signed-up to the target and any which are acting as lead partner/s (shown with a *)
		07/08	08/09	09/10	
SI 10 The percentage of priority prolific offenders who re-offend within 12 months as measured by Cumbria Partnership Support data	1149	919	735	735	Crime & Disorder Reduction Partnerships*
SI 11 The number of 1st time entrants to the Youth Justice System as outlined by the Youth Justice Board KPI 1	1189 (2005/06)	1153	1130	1082 (unstretched) 1011 (stretched)	Cumbria County Council - Youth Offending Service*
SI 12 The percentage of residents who strongly agree or agree that by working together, people in my neighbourhood can influence decisions that affect their neighbourhood as measured by the Cumbria Quality of Life Survey	51% (2006 Quality of Life Survey) Confidence Interval (CI) 2.1%	5% (unstretched) 53% (stretched)	51% (unstretched) 55% (stretched)	51% (unstretched) 57% (stretched)	Cumbria County Council*
SI 13 Number of deaths and injuries (excluding precautionary hospital admissions) arising from accidental fires in dwellings	170 people (cumulative 2003 - 2006)	6.6 per 100,000 population (unstretched)	5.57 per 100,000 population (unstretched)	84 people (cumulative 2007 - 2010) (unstretched) 77 people (cumulative 2007 - 2010) (stretched)	Cumbria Fire & Rescue Service*

7 Legacy (Stretch) Indicators LAA 2007 - 2010

Indicator(s), including those from national indicator set (shown with a *)	Baseline (2006/07 unless otherwise indicated)	LAA Improvement Targets			Partners who have signed-up to the target and any which are acting as lead partner/s (shown with a *)
		07/08	08/09	09/10	
SI 14 To hold the total number of KSIs in which a driver aged 16-20 was involved to a 5 year rolling average of 89 for years 2007, 2008 and 2009	89 (5 year average based on calendar years 2001 - 2005)			89 (unstretched) 85 (stretched) (average per year over the period 2007, 2008 and 2009)	Cumbria Road Safety Partnership*
SI 15 The percentage of municipal waste arising sent for recycling or composting	29.2% (2006/07 projection)	31.2% (unstretched) 33% (stretched)	33.6% (unstretched) 37% (stretched)	34.6% (unstretched) 40% (stretched)	Cumbria County Council*





CUMBRIA STRATEGIC PARTNERSHIP
THE PARTNERSHIP VOICE FOR CUMBRIA



For more information on this document or the CSP please contact the CSP Manager on 01768 242310.

Or visit:
www.cumbriastrategicpartnership.org.uk

We can provide this strategy in different formats on request.