

Access land within the Greystoke Estate allows you to explore, on foot, a remarkable and unique landscape. Together with the Estate's extensive permissive path network there are many opportunities to enjoy this area. The map on this board shows the nearby access land and permissive path network.

Gillcambon & Berrier Hill

During the Second World War, the castle and surrounding estate were requisitioned by the British army as a training area for tank crews.

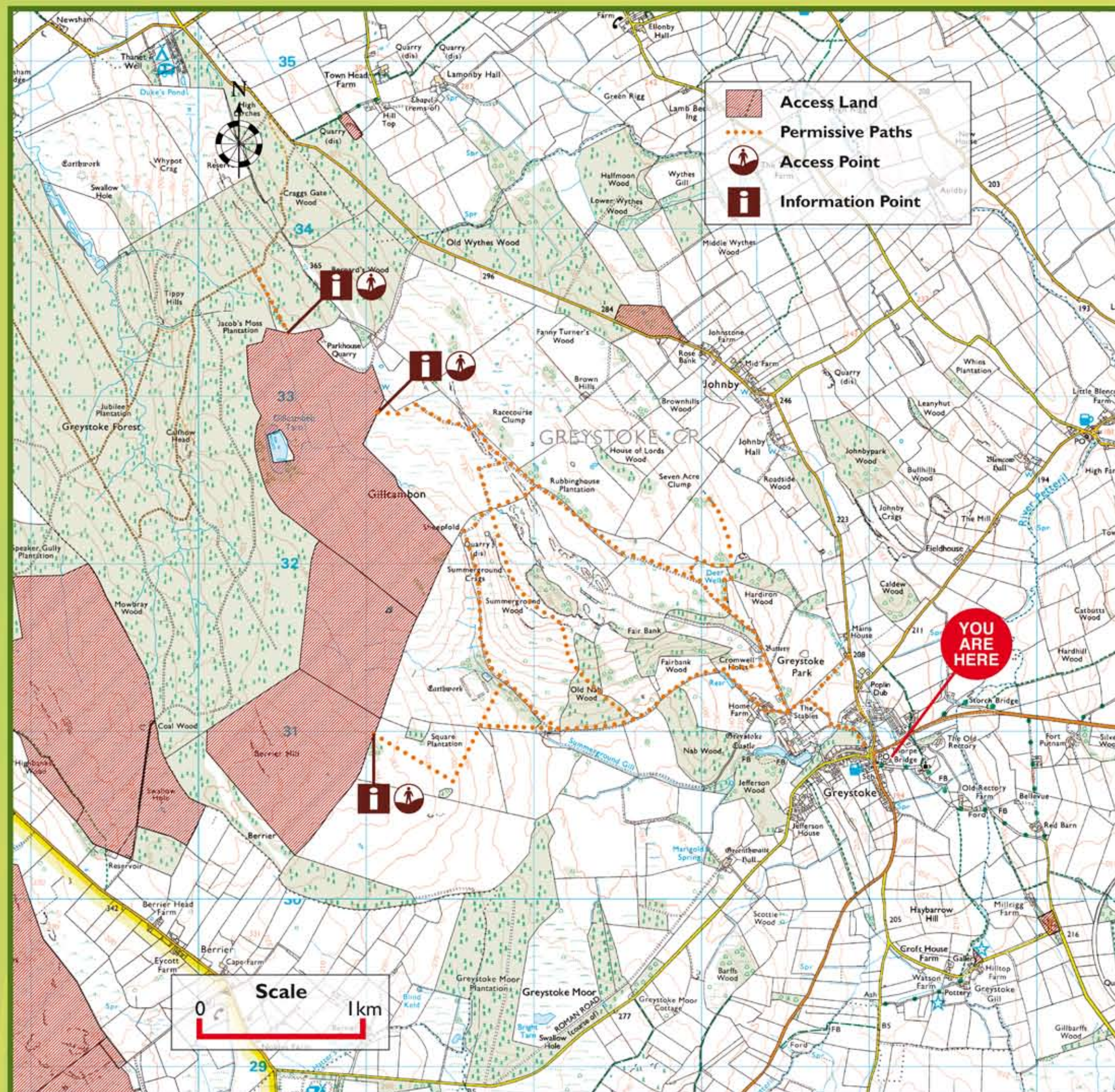
The heavy tanks caused substantial damage throughout the estate, and affected the land drains on current access land. The resulting lack of drainage has caused a gradual change in vegetation, from the former good pasture to the wetter, rough grassland we see today.



The peaty, acidic soils on clay substrate of Gillcambon gives way to thinner richer soils over limestone towards Berrier Hill. This gradation provides a wealth of differing habitats for plants and animals across the area.



Other features of interest on the access land are an 'erratic' boulder, some glacial overflow channels (which are relics of the last ice age), and remnants of a long abandoned medieval village. There is also a small raised mire towards the western boundary.



When you see this symbol it shows that land may be open for public access on foot. Access rights for other activities may also exist



This symbol shows there are no public access rights beyond where it is displayed



The right of access on foot also applies to wheelchair users. Where reasonably possible gates have been provided to allow access although please note that open country is often very rough terrain

For further information contact Cumbria County Council on 01228 601052

The Visitor's Code

Respect ... Protect ... Enjoy

- Be safe - plan ahead and follow any signs
- Prevent uncontrolled fires
- Protect plants and animals, and take your litter home
- Leave gates and property as you find them
- Do not take dogs on the permissive path network
- Consider other people



With rights... ...come responsibilities

You are welcome to explore the access land within the Greystoke Estate, but remember that the area is privately owned, of importance for wildlife and a place of work for people. Please exercise your rights responsibly.

- Please use the permissive path network to get to the access land – look out for waymarks and the access symbol
- Be careful. Access land can be rough to walk over. Keep your eyes open for hidden holes and other hazards

Dogs and the Greystoke Estate

Dogs are not permitted on the permissive path network within the Castle Estate, but are permitted on the open access land. Should you wish to take your dog on the access land, please use the permissive path from the Larches Car Park to the north.

Whilst on Access Land:

- Keep your dog on a fixed short lead between 1 March and 31 July. This is to protect ground nesting bird from disturbance
- Local restrictions may include a ban on dogs
- Note that dog restrictions do not apply to guide or hearing dogs

Plan ahead

Avoid disappointment by getting the latest information. Your rights to access open country can be restricted while work is carried out, and for safety or nature conservation reasons.

- Follow local signs and advice – any restrictions will be posted at access points
- Visit www.countrysideaccess.gov.uk or call the Open Access Helpline on 0845 100 3298 for up-to-date information on any restrictions
- Restrictions can be short or long term
- Public Rights of Way are not affected by restrictions to open access land
- Access land is shown on new series OS Explorer maps