

Access land within the North Pennines allows you to explore, on foot, some of England's most spectacular landscapes. Together with some 2,000km of Public Rights of Way, there are many opportunities to enjoy this stunning area. The map on this board shows nearby access land.

## Geltsdale and Cold Fell

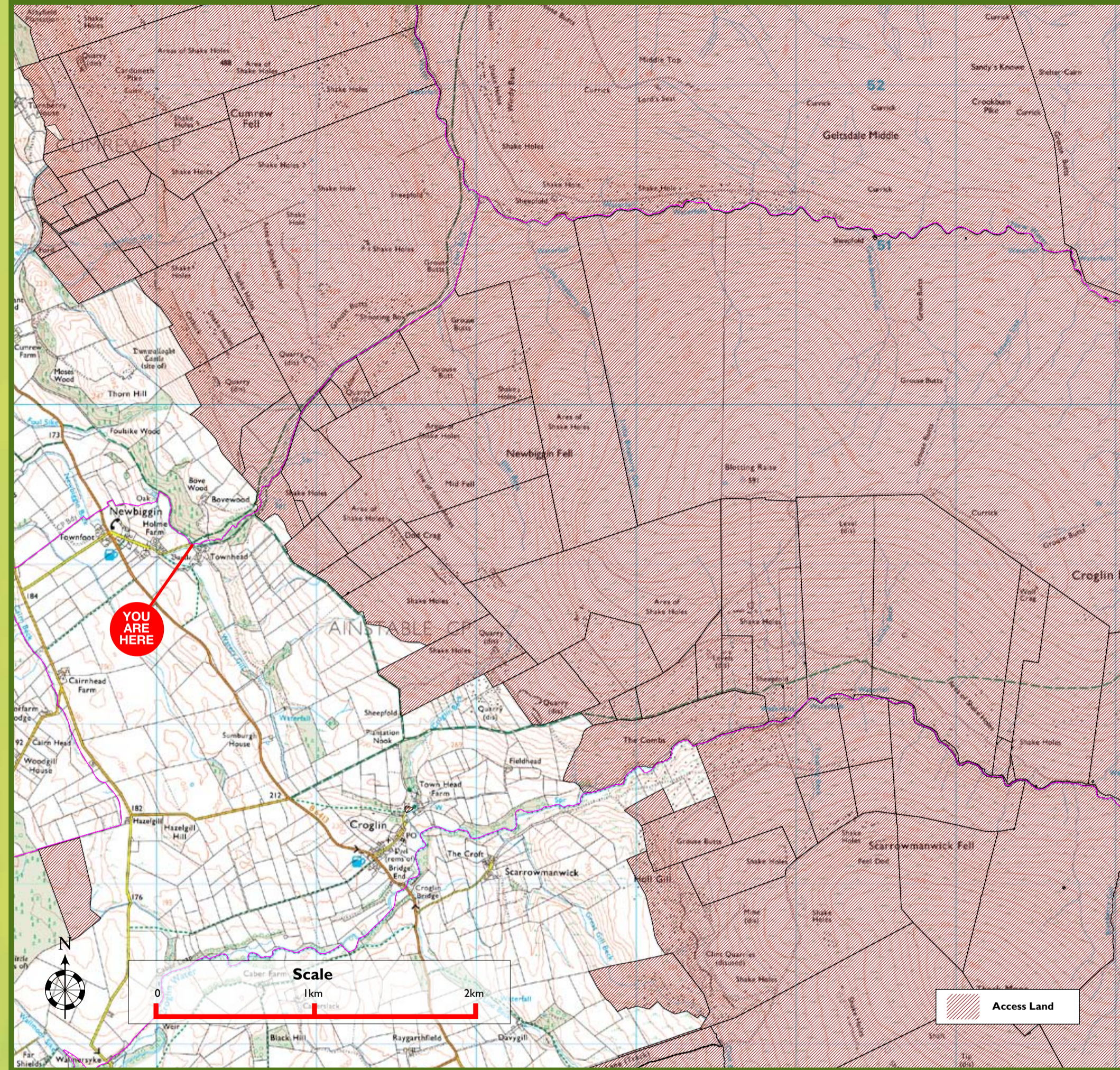
Much of the North Pennines moorland is overlain by thick mantle of peat, which may be up to 2m deep in places. The peat gives the landscape its characteristic



rolling form as it covers the underlying bedrock, and is the key to the internationally important wildlife habitats on the moor.



Typical habitats on deep peat include blanket bog, with heather, bilberry, cotton grass and rich carpets of sphagnum moss. Birds associated with blanket bog including golden plover, curlew and raptors such as merlin.



When you see this symbol it shows that land may be open for public access on foot. Access rights for other activities may also exist



This symbol shows there are no public access rights beyond the point where it is displayed



The right of access on foot also applies to wheelchair users. Where reasonably possible gates have been provided to allow access although please note that open country is often very rough terrain

For further information contact Cumbria County Council on 01228 601052

## The Moorland Visitor's Code

Respect ... Protect ... Enjoy



- Be safe – plan ahead and follow any signs
- Keep dogs under close control
- Prevent uncontrolled moorland fires
- Protect plants and animals, and take your litter home
- Leave gates and property as you find them
- Consider other people

## With rights... ...come responsibilities

You are welcome to explore access land in the North Pennines but remember that the area is privately owned, internationally important for wildlife and a home and place of work for many people. Please exercise your rights responsibly.

- Please use the Public Rights of Way Network or other signposted routes to get to access land – look out for the access symbol
- Be careful. Heather is rough to walk over. Keep your eyes open for hidden holes and old mine workings

## Dogs in the countryside

On access land:

- Keep your dog on a fixed short lead between 1 March and 31 July. This is to protect ground nesting birds from disturbance
- Local restrictions may include a ban on dogs
- Note that dog restrictions do not apply to guide or hearing dogs

On Rights of Way:

- Dogs must be kept under close control, preferably on a fixed short lead

## Plan ahead

Avoid disappointment by getting the latest information. Your rights to access open country can be restricted while work is carried out, and for safety or nature conservation reasons.

- Follow local signs and advice - any restrictions will be posted at access points
- Visit [www.countrysideaccess.gov.uk](http://www.countrysideaccess.gov.uk) or call the Open Access Helpline on 0845 100 3298 for up-to-date information on any restrictions
- Restrictions can be short or long term
- Public Rights of Way are not affected by restrictions to access open country
- Access land is shown on new series OS Explorer maps