

# HOUGHTON CE SCHOOL TRAVEL PLAN

MARCH 2016



*At Houghton CE School we encourage the promotion of a safe and healthy environment and are proactive in reducing our carbon footprint for all members of the school community. We promote and support independent non-vehicular travel and - where available - the use of buses and shared travel.*



# Contents

1. School details
2. Key contacts – to develop and implement the plan
3. Baseline surveys
4. Transport and road safety problems
5. Recommendations for action
6. Cycle & scooter count
7. Changes in travel mode
8. Action plan
9. Signed Agreements

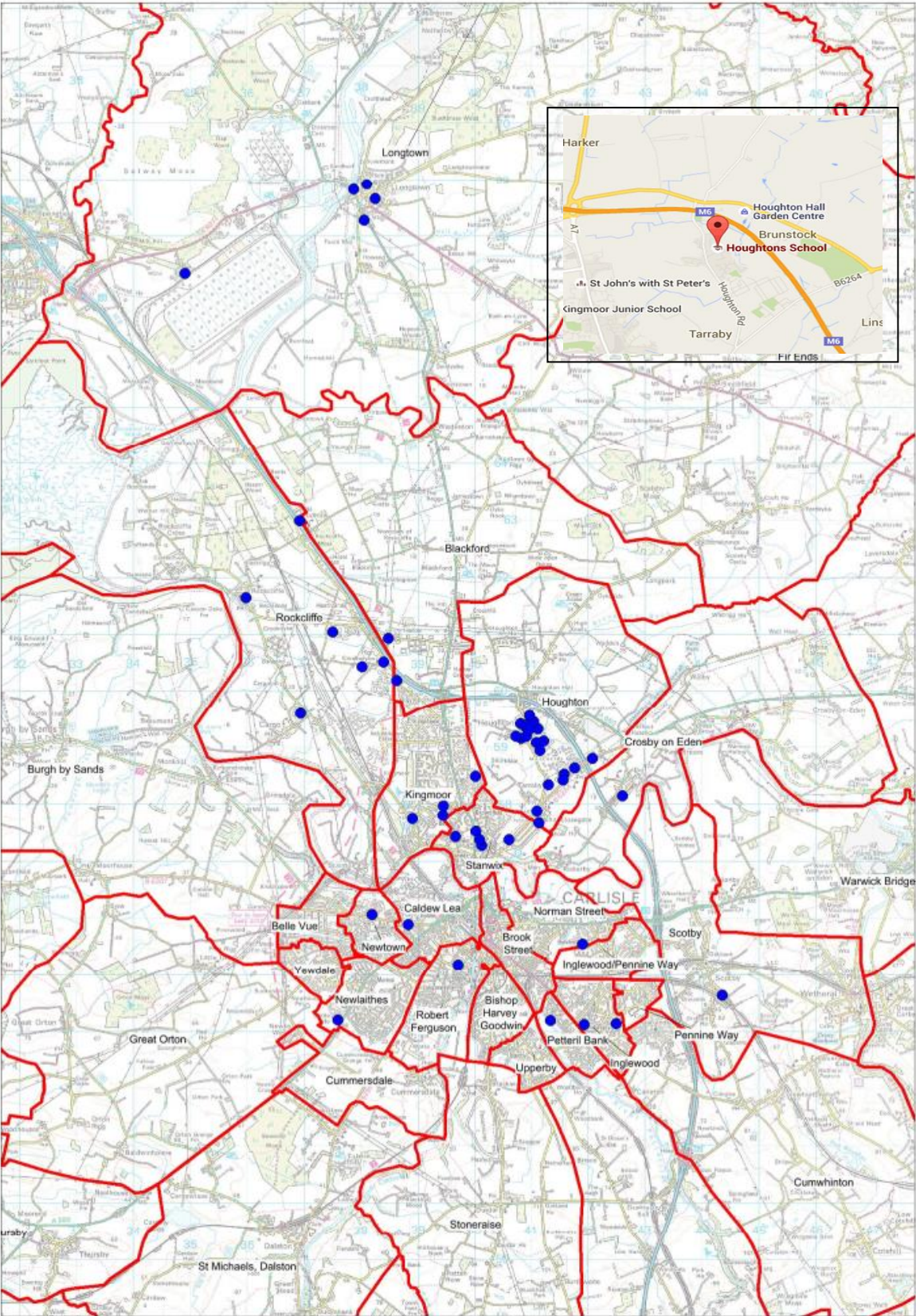
Appendix 1: Responses to consultations

Appendix 2: Supporting documents

## 1 School details

<b>Name of school</b>	Houghton C E School			
Type of school ( <i>Infant, Junior, Primary or Secondary</i> )	Primary			
Status of school ( <i>Academy, Community, Foundation, Independent, Voluntary Aided or Voluntary Controlled</i> )	Voluntary Controlled			
Number of pupils on roll ( <i>full time &amp; part time</i> ) & SEN	f/t 134	p/t	SEN 21	
Number of staff ( <i>full time &amp; part time</i> ) ( <i>it is highly recommended that a supplementary Travel Plan for staff and other school users is developed</i> )	f/t 8		p/t 11	
Age range of pupils	4-11			
<b>School contact</b>				
Head Teacher	Mrs Lindsey Burnie			
Address	Jackson Road Houghton Carlisle Cumbria			
Postcode	CA3 0PA			
Telephone/Fax numbers	Tel: 01228 593992		Fax: 01228 210174	
Email address	admin@houghton.cumbria.sch.uk			
Website	www.houghtonschool.co.uk			
<b>School Travel Plan contact</b>				
Name	Mrs Lindsey Burnie			
Telephone number	01228 593992			
Email address	head@houghton.cumbria.sch.uk			
<b>School situation and use</b>				
Description of school locality/ catchment area	The school is situated in the centre of a small village 2.5 miles north-east of Carlisle City Centre. The catchment area extends to Whiteclosegate and includes the Council's Gypsy, Roma, Traveller (GRT) site at Hadrian's Camp.			
Facilities ( <i>e.g. playground, car park, sports hall, community centre</i> )	1 playground; 1 sports field.			
Number of accesses - vehicle/pedestrian/cycle/shared	Vehicle	Pedestrian	Cycle	Shared
	1	2	2	0
Core school times	8:45am – 3:15pm			
Other uses ( <i>e.g. extra curricular/community access</i> )	Afterschool clubs; Community football club; Community Judo club			

# School Location & Pupil Postcode Plot



## 2 Key contacts - to develop and implement the plan

Name and contact details	Position	Responsibilities
Nancy Sloan <a href="mailto:nancy.sloan@cumbria.gov.uk">nancy.sloan@cumbria.gov.uk</a> 07971446231	School Travel Officer	Advises on safe routes to school; Provides guidance on Active Travel initiatives and cycle training; Supplies relevant materials to support the initiatives.
Lindsey Burnie <a href="mailto:head@houghton.cumbria.sch.uk">head@houghton.cumbria.sch.uk</a> 01228 593992	Headteacher	Responsible for the safety of pupils onto and off school site. Promotes safer routes to school to parents Promotes sensible parking outside of the school Liaises with community PSO and Traffic Wardens
Helen Benson <a href="mailto:admin@houghton.cumbria.sch.uk">admin@houghton.cumbria.sch.uk</a> 01228 593992	WOW co-ordinator	Co-ordinates and facilitates WoW (Walk or Wheel Once a Week), Walk to School Week & Walking Buses

Who were consulted, on what subject and how?			
Consultee	Consultation subject	Consultation method	Date
Parents	The journey to school	Questionnaire and newsletter	18/03/16
Pupils	The journey to school	Hands Up Survey	18/03/16
Staff	The journey to school	Hands Up Survey	18/03/16
Traffic Management Officer, Cumbria Highways	Highway measures	Meetings	Various

### 3 Baseline Surveys

Date of pupil survey: 18/03/2016

PUPILS - How do you travel to and from school?																
Total No. of Pupils	Car		Bus or taxi		Walk		Cycle/scoot		Motorcycle		Car Share		Train		Other - specify	
	No.	%	No.	%	No.	%	No.	%	No.	%	No.	%	No.	%	No.	%
122	77	63.1%			41	33.6%	4	3.3%								

PUPILS - How would you like to travel to and from school?																
Total No. of Pupils	Car		Bus or taxi		Walk		Cycle/scoot		Motorcycle		Car Share		Train		Other - specify	
	No.	%	No.	%	No.	%	No.	%	No.	%	No.	%	No.	%	No.	%
122	22	18%			37	30%	63	52%								

Date of staff survey: 18/03/2016

STAFF - How do you travel to and from school?																
Total No. of Staff	Car		Bus or taxi		Walk		Cycle/scoot		Motorcycle		Car Share		Train		Other - specify	
	No.	%	No.	%	No.	%	No.	%	No.	%	No.	%	No.	%	No.	%
11	10	91%			1	9%										

STAFF - How would you like to travel to and from school?																
Total No. of Staff	Car		Bus or taxi		Walk		Cycle/scoot		Motorcycle		Car Share		Train		Other - specify	
	No.	%	No.	%	No.	%	No.	%	No.	%	No.	%	No.	%	No.	%
11					1	9%	3	27%			7	64%				

## 4 Transport and road safety problems

Please list the issues that you feel you have that restrict sustainable and/or safe travel. Refer to consultation responses in Appendix 1.

- Congestion outside the school gates with 2-way traffic. Motorists forced to mount and drive along the pavement to get past each other, therefore a high risk to pedestrians
- Some drivers park on the corner of Jackson Road and Houghton Road which creates a hazard for other drivers and pedestrians
- Vehicles of all sizes pull up outside the school gates to 'drop off' children as the pavement is wider here. However, this is the pavement and is where the children access the school, therefore highly dangerous for children
- Lack of parking spaces for staff and parents at Houghton Village Hall and adjacent streets
- Not enough cycle / scooter pods if more children want to use this mode of transport
- 30mph speed limit makes Houghton village unsafe
- Difficulties for residents with blocked driveways during school drop-off and pick-up times
- Due to traffic and safety concerns, the Walking Bus we tried last year had limited success due to parents concerns over the safety of their child outside of their care

## 5 Recommendations for action

The recommendations should be linked to the issues identified in Section 4 and the Active Travel team can help with this process, especially with regard to engineering measures and training. Viability, budgetary and other constraints could affect the introduction of any measures recommended for action. Please note that it will be necessary to discuss any potential measures with CCC highways staff prior to progression.

- One way traffic route on Jackson Road to reduce congestion outside school gates – **see below**
- Extended double yellow lines to stop parking on the corner of Jackson Road and Houghton Road, which reduces visibility for both drivers and pedestrians – See section 8.3
- Bollards outside the school gates to stop vehicles pulling up onto the pavement and then driving along the pavement
- Increase parking for parents and staff at Houghton Village hall to encourage 'Park & Stride'
- Install a short section of footpath from Houghton Village Hall car park to the point where families cross Houghton Road
- Increase number of scooter / cycle pods to accommodate increase in numbers
- Reduce speed limit through the village to 20mph
- Direct action by traffic wardens to address residents concerns over blocked driveways ie issuing of tickets
- Address the above issues and parents more likely to support the Walking Bus.

See Appendix 1 for Cumbria Highways & Active Travel Officers Comments



## 6 Cycle & scooter count

The school should take a cycle and scooter count before and after any improvements to cycle and scooter facilities are made. It is also recommended that a cycle and scooter count is taken before and after the provision of any other measures (such as training) to show effects.

Cycle & scooter count						
Date of count before	Cycle count	Scooter count	Measure Implemented	Date of count after	Cycle count	Scooter count

## 7 Changes in travel mode

The basic premise of the Travel Plan is that pupils and staff should attempt to change their travel patterns away from non-sustainable modes such as the private car, to healthy and sustainable choices such as walking, cycling and scooting. There are no numerical targets at this stage, but the actual shifts in travel mode can be measured as numerical and percentage changes following each annual review. Some broad targets are shown below, and you are encouraged to make notes on how you think that these can be achieved.

Broad targets and notes on how they will be achieved
<p><i>Broad Targets: Please change, add to or remove these as you wish.</i></p> <p>Target 1: Reduce journeys made by private car</p> <p>Target 2: Increase walking journeys</p> <p>Target 3: Increase cycling and scooting journeys</p> <p>Target 4: Increase the use of car sharing</p> <p>Target 5: Improve safety around school gates on Jackson Road</p> <p>Target 6: Raise awareness amongst parents and pupils</p> <p><u>Notes on how to achieve the targets</u></p> <ul style="list-style-type: none"> <li>• Promote other modes of transport with parents and children</li> <li>• WOW; 100 mile challenge; other travel incentives</li> <li>• Increase cycle / scooter pods</li> <li>• Car share with staff</li> <li>• 1 way system on Jackson Road; double yellow lines extended</li> <li>• Bollards outside school gates to prevent parking there (or move school gates out in line with the pavement)</li> <li>• Train pupils to be 'traffic wardens' and to encourage their parents to 'Park &amp; Stride' and park considerately.</li> </ul>

## 8 Action plan

8.1 Measures to promote safe and sustainable travel (add or delete as appropriate)					
Measure	Year Group(s)	No. of pupils taking part	Start date mm/yy	Measure to be actioned by	Comments
<b>WALKING, CYCLING AND SCOOTING</b>					
Join WOW scheme	R-Year 6 & Staff		10/16		
Take part in Walk to School Week	All	-	05/16		
Set up Park & Stride	All	-	-		
Set up a Walking Bus	R - Year 6				
Free Your Feet	Year 7 >				
Take part in The Big Shift	All				
Take part in The Big Pedal	All & Staff	-			
Cycle-Smart (discounted cycle helmets)	All & Staff				
Bikeability Level 1 & 2	Years 5 & 6				
Bikeability Level 3	Years 7 & 8	N/A			Pupils must have Passed Levels 1 & 2
<b>CAR SHARE</b>					
Car share	All & Staff				
<b>ROAD SAFETY</b>					
Take part in Road Safety Week	All				
Road safety lessons	All				
Promote use of high visibility clothing	All				
<b>INFORMATION</b>					
Enable staff access to Active Travel newsletter	N/A				
Active Travel notice board	N/A				

### 8.2 Proposed school engineering measures (e.g. cycle/scooter storage, pedestrian access)

Measure	Estimated cost (£)	Comments

### 8.3 Proposed road safety engineering measures (eg zig-zags, footways, crossing points) (These proposals will need to be agreed in consultation with the relevant Authority)

Measure	Estimated cost (£)	Relevant Authority (eg County Council, Countryside Commission)	Comments
Double yellow lines at Jackson Road/ Houghton Road junction	300.00	County Council	Works already in current Traffic Regulation Order, probable implementation late 2016.

### 8.4 Measures to sustain the travel plan ( amend, add or remove as appropriate)

Measure	Action by	Notes
Maintain, review and update the Travel Plan annually	Head Teacher and main Travel Plan contact	For consistency and control of the plan
Promote sustainable travel to children, staff and parents	Head Teacher and School Travel Officer	To encourage a culture of active and sustainable travel
Embed sustainable travel policy in school documentation	Head Teacher	To formalise a culture of active and sustainable travel

## 9 Signed Agreements

The signatories below agree to implement this School Travel Plan and to review it on an annual basis. This review will also consider pupil travel needs arising from new developments in education and transport provision, and the Travel Plan will be revised as necessary to take these in to account.

Signatures	
Head Teacher	Name: Lindsey Burnie
	Signed:
	Date: 24/03/16
Chair of Governors	Name: Roger Cowton
	Signed:
	Date: 24/03/16

The signatory below agrees to support, advise and give guidance on this School Travel Plan and to monitor it on an annual basis

School Travel Officer	Name:
	Signed:
	Date: